

GUARANTEED THE LARGEST CIRCULATION OF ANY NEWSPAPER IN KENYA, UGANDA, TANGANYIKA AND ZANZIBAR.

THE EAST

DAILY EDITION.

African Standard

KOMBARA TIMES & UGANDA ARGUS

With which is incorporated The Leader

NAIROBI, SATURDAY, FEBRUARY 10, 1951

REVOLUTION IN PRICES!!

For the first time in the history since the Armistice... CHAPPELL ELYSIAN, £120

It is worth your while to purchase... The R.E.A. MUSIC STORES Co., Ltd.

101, Market Street, NAIROBI. Phone 231.

Palmer Cord or Fabric... WILL PAY YOU... PALMER LTD.

WILL RISH REBELS SURRENDER?

Armed Leader to Get an Undertaking... 'UNCONVENTIONAL SUBVERSION'... AN Armistice Held Up for 24 Hours.

FRENCH PEOPLE SHOW DISAPPOINTMENT

French People Show Disappointment... 'Military Measures Not Successful'... FURTHER TERRITORY TO BE OCCUPIED.

HOME DEPARTMENT

Labour Beyond the Seas... As Proposed Ministry... [Mr. Murray's Report]... [Mr. J. D. Riley]... [Mr. M. M. Harkin]

HOME FOOTBALL

English Cup Second Round Replay... Chelsea and Millwall Out... ENGLISH LEAGUE... FOOTBALL LEAGUE... [Mr. Murray's Report]

HEAVY LOAD OF LIFE IN DISASTERS

Heavy Load of Life in Disasters... One hundred and twenty... [Mr. Murray's Report]

Another Mining Disaster

Another Mining Disaster... [Mr. Murray's Report]

Freedom for British Residents

Freedom for British Residents... [Mr. Murray's Report]

Home Affairs

Home Affairs... [Mr. Murray's Report]

The wisdom of the Wise... MUST cost down expenses! OR not on all carloads...

Castrol... Can be obtained from... Newton's Limited... NAIROBI.

Princess Mary

Princess Mary... [Mr. Murray's Report]

Today is the Day

Today is the Day... [Mr. Murray's Report]

Transport Difficulties

Transport Difficulties... [Mr. Murray's Report]

Shrewd Men

Shrewd Men... [Mr. Murray's Report]

Newton's Limited... NAIROBI... Importing Agents

Hence Our Name... EITHER OR... The Service Co Ltd

WHITEAWAY, LAIDLAW & Co., Ltd.

The House for the Best Value in all Departments.



HORSE BODY BRUSHES
 Whitewood Back, Grey Bristles, Large Working Surface.
 Price, Shs. 3/-
 Flexible Leather Back BODY BRUSHES with superior Bristles.
 Price, Shs. 5/-
 WOOD DANDY BRUSHES.
 Price, Shs. 3/50

CLARK'S CLIPPERS.
 Patterns No. 1 and No. 4.
 All in perfect condition. Must be cleared.
 Price, Shs. 25/-



SMART WALKING SHOES
 Derby Fronts, made from selected Calf Skins, Dark Tan Colour, Welted Soles. Exceptional Value.
 Price, Shs. 25/-



TAN MARCHING BOOTS.
 Stout Soles, Broad Fitting. Guaranteed All Leather.
 Price, Shs. 32/-



"ORIENT" Black or Tan Calf Walking Shoes. Smart Appearance. Made of hard-wearing materials. All sizes, comfortable fitting.
 Price, Shs. 25/-

OUR TERMS ARE CASH.
 To avoid delay in despatch, customers must accompany all orders.



"ORIENT" Black or Tan Selected Calf Boots. Strong Welted Soles. A splendid wearing line. Balsam or Derby Fronts.
 Price, Shs. 30/-



CHROME SOLED TENNIS SHOES. Ladies' Strong Canvas Tennis Shoes with hard-wearing Chrome Soles. All Sizes.
 Price, Shs. 15/-



TAN GRAINED CALF BOOTS. Medium Weight Sole, Very comfortable fitting, British made throughout. All Sizes.
 Price, Shs. 35/-



CABIN TRUNKS.
 Three Ply Birch Foundation, covered Tan Waterproof Canvas, Three Hoops, Brass Nosed, Two Lever Locks, complete with Tray.
 Price, Shs. 65/-



LIGHT CAR TRUNK.
 Covered Brown Waterproof Canvas, Leather bound edges, strong locks, all-round straps with Tray.
 Size, 26" x 16" x 10"
 Price, Shs. 77/-

550 only

Vacuum Flasks.
 The best value ever offered. Steel case, nicely enamelled green, aluminium drinking cup. Capacity about one pint.
 Price
Shs. 3-50

Dinnerware Bargain

The Garma Dinner Service
 Pretty Green Trolling Vine Design on Clear White Ground. Very Attractive. Set of 30 Pieces.
 Spares to replace breakages always in stock.
Service for Six, Shs. 57.

The "Dainties"

HANDKERCHIEF.
 LAMES MEADOW BLEACHED CAMBRIC HAITNER-CHEFS, with neat hemstitched border, good hard-wearing every-day handkerchief.
 Price, Shs. 3/50 per half dozen.

BALACLAVA CAPS.
 Made from Soft Fleecy Wool to pull down over ears and neck. Large Variety of Shades.
 Two Qualities.
 Price, Shs. 4/- & 5/-



THE "TUDOR" HAT.
 A smart Felt Hat in the latest style. Colour, Light and Dark Grey and Beaver.
 Price, Shs. 13/50



Fawn coloured All Wool GOLF HOSE, self-coloured turn-over tops, very smart and hard-wearing.
 Price, Shs. 8/50

1922 PROSSERS 1922 TENNIS BALLS
 CLEARING PRICE, Shs. 22/- dozen.



GENT'S DOUBLE TERAS.
 Good quality felt double teta hats. Shades of Grey, with Scarlet lining, well ventilated.
 Price, Shs. 29/50

SPECIAL VALUE TUNIC SHIRTS



STRIPED CAMBRIC TUNIC SHIRTS. White ground with smart coloured stripes, double cuffs, well cut and tailored. Exceptional Value.
 Price, Shs. 9/50

READY-TO-SERVE SPORTING JACKET



SMART TWEED SPORTS JACKETS, cut and tailored by experts. Newest style. Half belt with four pockets.
 Price, Shs. 37/50



SUNPROOF HELMETS.
 Strong Compound Foundation. Covered Kibbitz, with Metalic Repellent and Leather Chin Strap.
 Price, Shs. 19/50



The "Ceyto" Pyjamas
 Striped Ceylonette, Sleeping Suits. Large variety, new bold stripes and colours. Well tailored and cut full for comfort.
 Price, Shs. 14/50

THE GREAT REVIVAL OF TABLE TENNIS.
 Our Popular Set.
 Price, Shs. 6/50

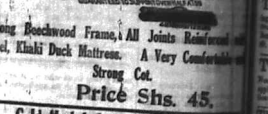


The Cool fire-spring black enamelled DUNBELLS.
 A very fine exercise, complete in law, with chart of the best exercises.
 Price, Shs. 9/50

Travelling Rugs.



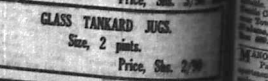
PLAID WOOL TRAVELLING RUGS with Fringe. Good selection of quiet designs on dark ground.
 Size, 78" x 52". Very Warm and Comfortable.
PRICE Shs. 15.



Gold Medal Camp Cots
 Strong Beachwood Frame, All Joints Reinforced with Steel. Kind Duck Mattress. A Very Comfortable Strong Cot.
Price Shs. 45.



Gold Medal Camp Chairs.
 Strong Beachwood Frame, All Joints Reinforced with Steel. Kind Duck Seat.
Price Shs. 25



A FAMOUS TURKISH TOWEL. Nice Heavy Woven from specially selected Fawn and Absorbent Cotton. Size 50" x 27". Convenient Bath Size.
 Price, Shs. 3/50

CLASS TANKARD JUG.
 Size, 2 pints.
 Price, Shs. 2/50

Standard Rates

SITUATIONS VACANT.

WANTED immediately... Qualified man and good... Voucher No. 84, Standard.

WANTED, a good European... writing machine... P.O. No. 422.

HOLLAND... HOLLAND... HOLLAND... HOLLAND... HOLLAND...

EDUCATED and Ambitious... young man with £1,000... P.O. No. 311.

AFRICAN SKINS in the... of any description... P.O. No. 311.

RELIANCE TRANSPORT CO... Special attention with... P.O. No. 311.

WATTLE-BUNGLE-OLIVE... Special quotations for... P.O. No. 311.

RELIANCE TRANSPORT CO... Special attention with... P.O. No. 311.

RELIANCE TRANSPORT CO... Special attention with... P.O. No. 311.

RELIANCE TRANSPORT CO... Special attention with... P.O. No. 311.

RELIANCE TRANSPORT CO... Special attention with... P.O. No. 311.

RELIANCE TRANSPORT CO... Special attention with... P.O. No. 311.

RELIANCE TRANSPORT CO... Special attention with... P.O. No. 311.

RELIANCE TRANSPORT CO... Special attention with... P.O. No. 311.

RELIANCE TRANSPORT CO... Special attention with... P.O. No. 311.

RELIANCE TRANSPORT CO... Special attention with... P.O. No. 311.

RELIANCE TRANSPORT CO... Special attention with... P.O. No. 311.



ANOTHER COMPETITOR... My answer to the kids... 'The Kidney Corner'...

One day at the... 'The Kidney Corner'... 'The Kidney Corner'...

Gifts suitable for gentlemen... 'The Kidney Corner'... 'The Kidney Corner'...

Gifts suitable for ladies... 'The Kidney Corner'... 'The Kidney Corner'...

Maize & Posho... Insurance & Economy... 'The Kidney Corner'...

George Blowers... Building and General Contractor... 'The Kidney Corner'...

C. E. Browne, Limited... Bathing... 'The Kidney Corner'...

Wanted... Second-hand Books... 'The Kidney Corner'...

Large Stocks... E. S. M. Ltd. NAIROBI... Prompt Delivery... FOR EVERY PURPOSE

Gifts of Quality... Gifts suitable for gentlemen... Gifts suitable for ladies... 'The Kidney Corner'...

UNITED NETHERLANDS NAVIGATION CO... Holland Africa East Line... S.S. 'HOOGKERK'... Homebrew via The Cape

B. E. A. FARMERS ASSOCIATION LIMITED... NAKURU... Telephone Address... Assisted

UNITED NETHERLANDS NAVIGATION CO... Holland Africa East Line... S.S. 'HOOGKERK'... Homebrew via The Cape

GEORGE BLOWERS... Building and General Contractor... Telephone Address... Assisted

INDIAN STEAM NAVIGATION CO... Bombar-Durban Steamers... Telephone Address... Assisted

Wanted... Second-hand Books... Stationery Store, 6th Avenue... Telephone Address... Assisted

Standard Rates... Building Plots for Sale... Louise Rene... 'The Kidney Corner'...

SITUATIONS VACANT... Building Plots for Sale... Louise Rene... 'The Kidney Corner'...

KIDNEY CORNER... Another Competitor... Gifts suitable for gentlemen... Gifts suitable for ladies... 'The Kidney Corner'...

Large Stocks... Gifts of Quality... Maize & Posho... George Blowers... 'The Kidney Corner'...

UNITED NETHERLANDS NAVIGATION CO... Indian Steam Navigation Co... Bombar-Durban Steamers... 'The Kidney Corner'...

Wanted... Second-hand Books... Stationery Store, 6th Avenue... Telephone Address... Assisted

AUCTION SALES

AUCTION DIARY.
London, Feb. 12, at 10.30 a.m. Sale of Oxen, etc. (Aust. Co.)
Harar, Saturday, Feb. 20th, Closed Auction, etc. (V. S. Snow)

ARCHIBALD FICOGG
Commission Agent, Dealer in Arms and Ammunition, HARAR.
Commissioners awarded, Leopold, Lion, Jackal, Manly, Hyrax and other skins, Zebu, Hartley's and other Traps...

J. D. LEONARD'S AUCTION DIARY FOR February GILGIL.
Thursday, February 15th, at 10-30 a.m. in Mr. COLVILLE'S STOCK YARDS.

Friday, February 17th, at 10-30 a.m. Sale of grade and Native Oxen, Heifers, Oxen (graded and ungraded).
Saturday, February 24th, at 10-30 a.m. ELDAHA RAVINE. Sale of Native Cattle at the Government Cattle Shop.

Tuesday, February 27th at 10-30 a.m. 10 GRADU COWS with Calves at sale.
30 NATIVE HEIFERS & A F.F. from Thiba.
Immense to Best Cows, mostly heavy in Cull.
20 TRAINED A.M. & F. G.N.
40 UNTRAINED A.M. & F. G.N.

MUTER'S PROPERTY LIST
An Opportunity Worth Seizing
Nalvasa Lake Front
FLOTS FOR SALE
1 New Heavily Stocked Lake Front.
Flots at 10 Acres, near Nalvasa Station
at \$12 per Acre.

MUTER'S SALES.

HOUSE FURNISHINGS SALE

Duly Instructed by G. J. MORRISON, Esq. & F. G. HAMILTON, Esq. I WILL SELL BY PUBLIC AUCTION WITHOUT RESERVE At Mr. Morrison's Residence, ADDRESS ROAD, THE Hill On MONDAY, FEBRUARY 12th, comm. at 8.30 prompt THE ENTIRE HOUSE FURNISHINGS CONSISTING OF

At 9.30 a.m. Garden Tools, Metal Saw, Hand Axes, Wagon, Trimming Bark, Hand, Rust, 1 Case of Road Saw Knapen, Trimming Bark, 7 Chany Beds, etc. At 10 a.m. -PICTURES & FURNITURE. 1 Original Water Colour, 'Interior of St. Peter's, Livorno,' by H. E. Scher. 1 Original Water Colour, 'Ripa Falls,' by E. Scher. 1 Artist's reproduction Silver Gilt, Drawing, by G. Seaton. 1 Old Coloured Engraving by Balardini, Engravings, Lead and Silver Boxes, 2 Picture-Frames.

SANDS & Co., Auctioneers.

SANDS & Co., Auctioneers. Monday Feb. 12th at 10-30 Provisions, Sundries, Saddles. Soaps Toilet Sundries. 11.30 a.m. 50 Trained Trek Oxen.

SANDS & Co. STOCK SALE. Naivasha Tues. 13th Feb. 100 Grads Fat Bullocks. 40 High Grade Milkings Cows.

SANDS & Co. AUCTIONEERS. LAST WEEK OF PRESTON'S GENUINE SALE. Monday 12th to Saturday 17th. 20 per cent. to 50 per cent Reductions off Entire Stock of Ladies' Children's and Infants' Clothing, Millinery, Hosiery, etc.

Long Distance Telegraphing from America.

VERY FEW COMPLAINTS. (From Our Own Correspondent) London, January 17. The rapid spread of telegraphing in this country is probably reaching its peak...

(From Our Own Correspondent) London, January 18. The rapid spread of telegraphing in this country is probably reaching its peak...

The whole of the machinery of the Federal Customs Tariff is being revised...

At 11.30 a.m. -LIVER, HAYSTACK GLASSWARE & Co. 1 Pair of Prismatic Spectacles, 7 Microscopes.

SANDS & Co., Auctioneers. Monday Feb. 12th at 10-30 Provisions, Sundries, Saddles. Soaps Toilet Sundries. 11.30 a.m. 50 Trained Trek Oxen.

SANDS & Co., Auctioneers.

STONE HOUSE FOR SALE

5 Rooms, Kitchen Pantry and Bathroom with central hot buildings, garage, etc. Standing on 1/2 acre of ground. £1500 or near offer.

J. W. MILLIGAN & Co., Madatally Building Government Road NAIROBI. P.O. Box 148

SANDS & Co.

LIVE STOCK SALE. MANUKU 'MONDAY' 19TH FEB 500 Prime Shagbush Oxen mostly Grade 2 300 Grade Weteran Oxen 40 Grade Merino Rams 100 Cows, mostly Grade 2 100 Horses 1 Grade Driver Bull.

SANDS & Co. Auctioneers. Further entries being received.

AUSTIN'S AUCTION

At the MART, MADATALLY BUILDINGS, Government Road. SHORT NOTICE SALE LIMORU. Duly Instructed by Capt. C. M. Ferry-Cook, who is proceeding home.

AUSTIN & Co.

Will Sell by Public Auction Entirely Without Reserve On TUESDAY FEB. 15th At 2 o'clock sharp The Entire Contents of his Dairy Four Miles from LIMORU Station on Route C.

These include:- 12 Good Grade Cows and Calves, most of which have been sired by a Furo Dord Friesland Bull, and good milkers. Complete set of Dairy Utensils. Every kind of Cows Feeding, agricultural Implements of every kind. Posts, Virns, Fences, etc.

A Car will meet this Train. AUSTIN & Co. Auctioneers. UNRESERVED SALE OF EXCELLENT TRUCK SAW-MILLING MACHINERY, etc. Instructed by the Directors of the British East African Timber Company, Limited, Successors to the East African Timber Co., Ltd. NAIROBI.

AUSTIN & Co. Auctioneers.

UNRESERVED SALE OF EXCELLENT TRUCK SAW-MILLING MACHINERY, etc. Instructed by the Directors of the British East African Timber Company, Limited, Successors to the East African Timber Co., Ltd. NAIROBI.

AUSTIN & Co.

WILL SELL BY PUBLIC AUCTION ENTIRELY WITHOUT RESERVE ON MONDAY, FEBRUARY 19th, at 11.30 a.m. At the Premises of the Timber Company in Dakota Street THE ENTIRE MACHINERY, BUILDINGS, TRUCKS, etc. Comprising:- 1 50 H.P. WRIGHTHOUSE ELECTRIC MOTOR with all accessories. 1 LARGE FOUR-CUTTER PLANING MACHINERY with all accessories. 1 PORTABLE SAW-MILL with all accessories for processing firewood, staves, and other work.

1 BOLLEE FEED-RESOR. ALL STEEL, with all accessories. 1 WOODEN SAW BENCH for light work. 1 GRASS MOWER, by Smith & Son, Glasgow, with all accessories. 1 HAND SAW. 1 AUTOMATIC GRINDING AND SHARPENING MACHINERY. 1 SAW SHARPENING MACHINERY. 1 SUBAPAS PLANER, heavy type. 1 WOODEN SAW BENCH for light work. 1 Axle for Heavy-duty Heavy Duty. Miscellaneous. From 1812. 1000 lbs. Quantity of Sand Heavy. Posts, Virns, Fences, Traps, and other tools.

ALL THE ABOVE MACHINERY IS IN PERFECT WORKING ORDER. 1 SHAMALI CATTLE AND 4 OXEN. QUANTITY OF 8000 lbs. Also The Whole of the Building and Sheds, which are situated on 2.00000 of Good Corrugated Iron, Windows, etc.

THE WHOLE TO BE REMOVED BY THE FREIGHT TRUCK WITHIN ONE WEEK FROM FRIDAY, FEBRUARY 25th. ON VIEW FROM 10 a.m. to 6 p.m. daily.



TO COFFEE PLANTERS.
Visit to Nairobi Coffee Caring Mills.
BRIEF DESCRIPTION.

A representative of the S. A. Standard newspaper paid a visit to the Nairobi Coffee Caring Mills, and in the course of the visit obtained a full description of the machinery and process of the mill. The machinery is of the latest type, and is of the most efficient design. It is of the type known as the "Brooke Bond" type, and is of the most efficient design. It is of the type known as the "Brooke Bond" type, and is of the most efficient design.

The mill machinery is of the most efficient design. It is of the type known as the "Brooke Bond" type, and is of the most efficient design. It is of the type known as the "Brooke Bond" type, and is of the most efficient design.

The machinery is of the most efficient design. It is of the type known as the "Brooke Bond" type, and is of the most efficient design. It is of the type known as the "Brooke Bond" type, and is of the most efficient design.

The machinery is of the most efficient design. It is of the type known as the "Brooke Bond" type, and is of the most efficient design. It is of the type known as the "Brooke Bond" type, and is of the most efficient design.

The machinery is of the most efficient design. It is of the type known as the "Brooke Bond" type, and is of the most efficient design. It is of the type known as the "Brooke Bond" type, and is of the most efficient design.

The machinery is of the most efficient design. It is of the type known as the "Brooke Bond" type, and is of the most efficient design. It is of the type known as the "Brooke Bond" type, and is of the most efficient design.

The machinery is of the most efficient design. It is of the type known as the "Brooke Bond" type, and is of the most efficient design. It is of the type known as the "Brooke Bond" type, and is of the most efficient design.

The machinery is of the most efficient design. It is of the type known as the "Brooke Bond" type, and is of the most efficient design. It is of the type known as the "Brooke Bond" type, and is of the most efficient design.

The machinery is of the most efficient design. It is of the type known as the "Brooke Bond" type, and is of the most efficient design. It is of the type known as the "Brooke Bond" type, and is of the most efficient design.

SOAP!
SUPERIOR OLD ESTABLISHED AND PURE.
 Are the qualities bearing the name of **GOSAGE**
 SPECIALISTS IN ALL CLASSES OF Soaps and makers of the famous
BLIJE MOTTLED BRANDS
STAR BLUE MOTTLED
NAVY BLUE MOTTLED
OXFORD BLUE MOTTLED
 Manufacturers: **Wm. Gosage & Son Ltd.** London, England. Local Agents: **Blackburn & Barrett, Ltd.** P. O. Box 179, Nairobi.

INEXPENSIVE STATIONERY.
 MANY COMMERCIAL LINES HAVE ARRIVED.
 OTHER GOODS, INCLUDING SOCIAL STATIONERY.
 DUE SHORTLY EX "NORMAN" & "KORANNA"
25% off the Few Diaries left
 GOVERNMENT
W.T. TAWS & CO. ROAD NAIROBI.

EADIE'S FOOTWEAR LTD.
NEW GOODS
 ARBIBED BOYS SCHOOL BOOT & SHOES
 Willow & Ball Cell
 Brown Suede Brogue Sh. 35/-
THE E D BRAND Boy's Canvas Lining Sh. 17/-

Nairobi School of Dancing
 Miss Maye Odomo.
 Classes held at Ruturu Hotel every Friday for Children and Adults.
 For particulars apply P.O. Box 696, NAIROBI.
 Dances held every Saturday night at Theatre Royal, at 8 p.m.
 Onsite Tickets: Sh. 8/-, Single Sh. 5/-.

YOU CANNOT BE TOO CAREFUL WHAT YOU DRINK
"MINERANA" SPRINGS, 1926.
 SUPPLY THE FINEST MINERAL WATER.
 PUISE SPRING WATER.
 The utmost cleanliness is observed in the process of manufacture, which is carried out under personal European supervision.
SEND FOR OUR PRICE LIST.

3 THREE FARM, LIMORU.
 Excellent Headquarters for intending settlers and visitors.
 (15 miles from Nairobi, 8 from Lamuru Road to Post Office)
 Flower Gardens, 3 Tennis Courts, beautiful paths, Large Milk Room with Dairying Floor, Press, Hay and Calf Water in Belvedere. A few specially furnished Guest Cottages.
 Electric lighting throughout.
PLANS HOW BUILT!
 CHILDREN'S SCHOOL ADJOINING.
 Apply for particulars to:
MR. BLY, Care Commr., NAIROBI.

Brooke Bond
 The patient vacuum tin ensures that the tea is still good when it reaches you. Damp, and heat, and insects, cannot penetrate the vacuum tin, and they will spoil the fine flavour of the tea inside.
 The vacuum-packed tin, is no more than ordinary tea, but it is so packed that it is as good as new when it reaches you.
WATER SURVEY.
WELL BORING.
DRILLING & Co.
 GEORGINA STREET, NAIROBI. Phone 192.

UMBRELLA SOAP
 Available at all dealers.
WILLIAMS NICHOLAS & Co.
 Merchants Building, NAIROBI.
LOAN & DISCOUNT COMPANY, LIMITED.
 Office Buildings, Nairobi.
 Lend on notes of hand from **£1 to £1000**
 Confidence Ensured

AT LIMORU.
 Mr. W. H. Giles of Kericho Farm, Limuru, has kindly supplied the following meteorological report for last month:
 1st day of the month 24.0°
 2nd day of the month 24.0°
 3rd day of the month 24.0°
 4th day of the month 24.0°
 5th day of the month 24.0°
 6th day of the month 24.0°
 7th day of the month 24.0°
 8th day of the month 24.0°
 9th day of the month 24.0°
 10th day of the month 24.0°
 11th day of the month 24.0°
 12th day of the month 24.0°
 13th day of the month 24.0°
 14th day of the month 24.0°
 15th day of the month 24.0°
 16th day of the month 24.0°
 17th day of the month 24.0°
 18th day of the month 24.0°
 19th day of the month 24.0°
 20th day of the month 24.0°
 21st day of the month 24.0°
 22nd day of the month 24.0°
 23rd day of the month 24.0°
 24th day of the month 24.0°
 25th day of the month 24.0°
 26th day of the month 24.0°
 27th day of the month 24.0°
 28th day of the month 24.0°
 29th day of the month 24.0°
 30th day of the month 24.0°
 31st day of the month 24.0°
THINA, YAMBO AND DISTRICT CHAPLAINS.
SUNDAY, FEBRUARY 11.
 10.30 am—Morning Prayer and Holy Communion.
SUNDAY, FEBRUARY 12.
 10.30 am—Morning Prayer and Holy Communion.
NAIROBI COFFEE.
 Messrs. J. W. Milson & Co., sole representatives of Messrs. John Gillin & Co., Ltd., and the following report received by cable from London, 2nd February, 1926:—The country of Nairobi Coffee offered during the fortnight ended 2nd Feb. was 2,800 bags, of which, 4,000 bags were sold at 25/- per ton. The highest price for bold was 21/9 per ton. Market steady.
NEW SEASONS FIGS AND FRENCH PRUNES
 from **R. E. D.**
 "The Globe"

Departments in which WARINGS specialise
BLOUSES for every occasion.
GOWNS for Day and Evening wear.
DAY FROCKS, TAILORED COSTUMES, REST GOWNS, DRESSING GOWNS, LINGERIE-TROUSSEAUX a Speciality.
GLOVES—the best makes of the best makers.
HOSIERY—Silk and Lisle.
 Speciality—**SILK HOLEPROOF HOSE**
MILLINERY—including "Condor" and other Standard Tailored Hats.
CORSETS—the Latest Models.
 Sole Agents for "J.B." Corsets.
CHILDREN'S DRESSES for Day & Evening wear.
SCHOOL FROCKS.
 Everything for Children's Wear and Infants' Garments in particular.
Laces Ribbons Trimmings Fancy Bags.
Warings, Africa's Modest Government's Road Nairobi.

PREVENTING RAIDS ON UGANDA.

SUCCESS OF MEASURES ON N. E. FRONTIER.

Relief Chief Talks.

The following official report of the situation in the North Eastern Frontier of Uganda has been received in the Protectorate...

INDIAN TRADERS IN THE TRANSVAAL.

Deported as a Mission to the White Man.

Deputation to SEE GENL. SMITH.

A move will be made which the news will be that will probably prevent the agitation for the repatriation of Indians from the Transvaal...

Correspondence

LAND BANK.

The Editor says we had been informed for the purposes of personal correspondence...

REPUTATION OF WIND TYPE.

The property of those who are being advertised from the office of the soil, who, what, or why...

MANAGE COUNCIL.

Remember the mission, that with the object of the Transvaal officials...

MONEY MARKET.

London, February 8. Sliver 85. Gold 105. 1/2. Daily 74 1/2.

DAILY WEATHER REPORT.

Weather Report for 24 hours ending 9 a.m. Friday. Mean Showers: 68. Min. Maximum: 79. Max. Minimum: 79. Max. Minimum: 79.

CHURCH OF BHOPLAND.

ST. ANDREW'S, NAIROBI. 11.15 a.m.—Children. 10.00 a.m.—Mr. C. H. McMorris. 3 p.m.—Mr. James F. G. O'R.

THE SALVATION ARMY.

A hearty and cordial invitation is given to one and all who are interested in the spread of the Gospel...

The Indian Police.

The news of the terms of the Indian Police Bill has been discussed here and there in Uganda...

CORRECTION!!

MR. HATFIELD'S name as appeared in our columns in the Standard is incorrect...



THE GOVERNOR OF UGANDA.

Advertisement for Sir Geoffrey Francis Archer K.C.M.G., Governor of Uganda.

WIDEDOMBE FAIR.

To the Editor, 'E.A. Standard'. Sir—In connection with the Uganda Agricultural Exhibition...

MASONIC DANCE.

To the Editor, 'E.A. Standard'. Sir—In connection with the Uganda Agricultural Exhibition...

THE EDITOR, 'E.A. STANDARD'.

To the Editor, 'E.A. Standard'. Sir—In connection with the Uganda Agricultural Exhibition...

THE EDITOR, 'E.A. STANDARD'.

To the Editor, 'E.A. Standard'. Sir—In connection with the Uganda Agricultural Exhibition...

THE EDITOR, 'E.A. STANDARD'.

To the Editor, 'E.A. Standard'. Sir—In connection with the Uganda Agricultural Exhibition...

THE EDITOR, 'E.A. STANDARD'.

To the Editor, 'E.A. Standard'. Sir—In connection with the Uganda Agricultural Exhibition...



To the Members of the R.E.A.A.A.

Kenya Colony.

Perhaps you would like to dig deeper into the reasons that make

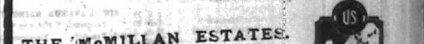
U.S. ROYAL CORD

the measure of all other tyre values.

Then just step up casually to some of your fellow motorists and put the question.

The makers of U.S. ROYAL CORD

Would rather have you take another car owner's opinion than their own.



THE McMILLAN ESTATES.

Phone 103. NAIROBI. Box 215.

TENNIS SHOES

FOR LADIES

GENTS

CHILDREN

Shillings

Gents White Buckskin 4/7-

Rubber Soles

Gents White Canvas 2/2-

Gents Fleet-Foot Plimsoles 1/3-

Ladies White Canvas 2/1-

Ladies White Buckskin 3/0-

Childrens Plimsoles

All Prices in Shillings

Maxwell Brady & Co.

The Footwear Store NAIROBI.

NAIROBI.

OVERSEAS MAILS

This notice is issued upon the latest advice from the shipping agents. It is possible, however, that alterations may occur in the shipping programme and the details may have to be altered without notice. The information given below is published subject to this reservation.

Mails will be closed at this Editorial Post Office on stated dates:

Company	From	Days	Arrive in Nairobi
Imperial	South Africa	Feb. 9	12
Imperial	East of Suez	Feb. 9	12
Imperial	South Africa	Feb. 9	12
Imperial	Rome	Feb. 17	19

Steamer	To	Days	Depart from Nairobi
Imperial	South Africa	Feb. 9	12
Imperial	East of Suez	Feb. 9	12
Imperial	South Africa	Feb. 9	12
Imperial	Rome	Feb. 17	19

Golden Castle taking parcel mail only.

STEAMER MOVEMENTS.

Arrivals.	From Europe	Days	Arrive in Nairobi
Chari	Feb. 10	12	
San Marino	Feb. 10	12	
Mermaid	Feb. 10	12	
Moham	Feb. 10	12	
Members	Feb. 10	12	

L. ROSENTHAL,

TRUST ACCOUNTANT.

Trust Chambers/Government Road.

Book now open on the Lincoln & Grand National.

Doubles on the above races 250-1.

Mr. S. LAZARUS is authorized to accept bets on my behalf.

Box 314. Tel. Address "ROSENTHAL," NAIROBI.

THE CYCLOSTYLES THAT WORK

& Best

Write for descriptive pamphlet and have machine sent on approval.

Price £47-10-0

Self Feeding Rotary.

Standard Stationery Stores.

Second Hand.

MOTOR CARS & CYCLES

BUICK, 6-cylinder, Touring.
BUICK, 6-cylinder, Touring.
CADILLAC, 6-cylinder.
CALIFORNIA, 4-cylinder.
CHEVROLET, Touring.
FORD, Touring.
FORD, One Two Terry.
NAPIER, Road Body.
VERLYAND, Model 64, Touring.
SWIFT Two-Seat Cycle Car.

USED CYCLES.

B.S.A., 4 1/2 h.p.
DOUGLAS, 2 1/2 h.p.
HARLEY-DAVIDSON, 7 1/2 h.p.
HARLEY-DAVIDSON, 4 h.p.
INDIAN, 5 h.p., etc.
P. M. G. H.P.
TRIUMPH, 4 H.P.

Deferred terms of payment can be arranged to suit approved customers.

THE SERVICE COMPANY LIMITED.

REVERE AVIATION, NAIROBI.
 Telephone: 118
 P.O. Box 428. Telephone 237

S. J. HUMPHREYS

FOR HIRE DAY OR NIGHT
 (DAY) Phone 65,
 (NIGHT) Phone 100

Business Patent Barley,
 1 lb tin 5/-, 1/20 per tin.
 Soap Bars, 5/- per box.
 Fresh Ground Coffee,
 5/- per 100 lb tin.

Kenya Stores.

Govt. Road,
 P.O. Box 25, NAIROBI, K. S. S.

COMMERCIAL OR TECHNICAL TRAINING BY POST.

We teach Architecture, Arts and Crafts, Advertising, Agriculture, Applied Chemistry, Book-binding, Business, Drawing, Engineering, French, German, Grammar, History, Mathematics, Typewriting, and 150 other subjects.

We Welcome Students.

Write to the
INTERNATIONAL CORRESPONDENCE SCHOOL,
 Box 514, NAIROBI, K. S. S.

THE EAST AFRICAN STANDARD.



The Nairobi Chess Club meets Thursday in the Y.M.C.A., at 8.30 p.m. Subscribers to the Club are invited to the Annual General Meeting, Feb. 10th, at 8.30. All members are particularly requested to attend.

PROBLEM No. 477.



White to play and mate in two moves.

PROBLEM No. 478.



White to play and force Black to checkmate him in four moves.

SOLUTIONS.

Problem No. 477 (See 18th). By G. Haselkopf, 101-103, "The Bulletin," London, and J. K. Forbes.

Problem No. 478 (See 20th). By G. Haselkopf, 101-103, "The Bulletin," London, and J. K. Forbes.

THE UNITED CLUBS DISTRICT ASSOCIATION.

The United Clubs District Association, 101-103, "The Bulletin," London, and J. K. Forbes.

EVERY WEEKLY.

The United Clubs District Association, 101-103, "The Bulletin," London, and J. K. Forbes.

LAND & ESTATE AGENTS.

LAND VALUATORS.
 THE TRUSTEES OF THE NATIONAL CHURCH.

only taking a rest from the busy life of the district. The district is a very large one, and the work is very heavy. The district is a very large one, and the work is very heavy. The district is a very large one, and the work is very heavy.

KENYA CHAMPIONSHIP.

The Kenya Chess Championship, 101-103, "The Bulletin," London, and J. K. Forbes.

AN OTHER SIDE OF US.

The other side of us, 101-103, "The Bulletin," London, and J. K. Forbes.

STREET CONFERENCE.

Street Conference, 101-103, "The Bulletin," London, and J. K. Forbes.

THE SERVICE COMPANY LIMITED.

REVERE AVIATION, NAIROBI. Telephone: 118. P.O. Box 428. Telephone 237.

THE SERVICE COMPANY LIMITED.

REVERE AVIATION, NAIROBI. Telephone: 118. P.O. Box 428. Telephone 237.

THE SERVICE COMPANY LIMITED.

REVERE AVIATION, NAIROBI. Telephone: 118. P.O. Box 428. Telephone 237.

The influence of the chess player is very large. The chess player is very large. The chess player is very large. The chess player is very large.

TYPENWRITING BUREAU.

Typewriting Bureau, 101-103, "The Bulletin," London, and J. K. Forbes.

MAGADI.

The Scientific Cleanser

Stronger & Superior in Every Way to Washing Soda. Will not injure the most delicate fabric. Does not dry up or change strength. Obtainable from all Retailers at 5/- 25 per lb.

JOHN HAIG & CO., LTD.

Gold Label Whisky. Glenleven Whisky. Blackhurst & Barnett, Ltd. P.O. Box 109. MOMBASA.

BLUE MOUNTAIN COFFEE.

In order to reduce any wrong impressions amongst the Coffee people of this country about the coffee seeds from the Pioneer known as the "Pioneer Mission," see Nairobi, we wish to give our customers some explanation.

THE SERVICE COMPANY LIMITED.

REVERE AVIATION, NAIROBI. Telephone: 118. P.O. Box 428. Telephone 237.

THE SERVICE COMPANY LIMITED.

REVERE AVIATION, NAIROBI. Telephone: 118. P.O. Box 428. Telephone 237.

BAKER & DISTRICT COMPANY.

SUNDAY, FEBRUARY 11. NAIROBI CHURCH. 7.30. Holy Communion. 9.15. Morning prayer and Hymns. 11.30. Holy Communion. 2.30. Morning prayer and Hymns. 4.30. Holy Communion. 7.30. Evening prayer and Hymns. R. F. H. WRIGHT.

ST. MARK'S CHURCH, PARLIAMENT.

SUNDAY, FEB. 11. 8.30 a.m.—Children's Service. 10.30 Holy Communion. 11.30 Morning prayer and Hymns. 2.30 Holy Communion. 4.30 Holy Communion. 7.30 Evening prayer and Hymns. R. F. H. WRIGHT.

ANOTHER SIDE OF US.

The other side of us, 101-103, "The Bulletin," London, and J. K. Forbes.

STREET CONFERENCE.

Street Conference, 101-103, "The Bulletin," London, and J. K. Forbes.

THE SERVICE COMPANY LIMITED.

REVERE AVIATION, NAIROBI. Telephone: 118. P.O. Box 428. Telephone 237.

THE SERVICE COMPANY LIMITED.

REVERE AVIATION, NAIROBI. Telephone: 118. P.O. Box 428. Telephone 237.

THE SERVICE COMPANY LIMITED.

REVERE AVIATION, NAIROBI. Telephone: 118. P.O. Box 428. Telephone 237.

THE SERVICE COMPANY LIMITED.

REVERE AVIATION, NAIROBI. Telephone: 118. P.O. Box 428. Telephone 237.

Various small notices and advertisements on the far right edge of the page.

Dainty & Fascinating Millinery, Make Your Selections Early

WILE
WHEEL BOOTS
Shs. 10/75 per pair



BLACK
HARDWEARING
BOOTS
FOR FASH WEAR
Shs. 25/- per pair



GENT'S BOX CALF
DERBY BOOTS
Shs. 25/- & 27/60 per pair



GENT'S BOX CALF
DERBY AND BALBOARA
BOOTS
Shs. 20/- per pair

BLACK GLAZE
DERBY BOOTS
Shs. 25/60 & 26/- per pair



ROUGH STRAW HATS IN
BERRY AND MAUVE
DEEP SILK RIBBON BAND
Shs. 21/60 each
BURST STRAW DITTO
Shs. 27/60 each

TAN
GRAIN
DERBY
BOOTS
Shs. 21/60 per pair



GENT'S WHITE CANVAS
TENNIS SHOES
Shs. 25/- & 26/60 per pair



BLACK CURE LACE HATS
LINED BROAD HOUSIE SILK
Shs. 24/- each

BEAUTIFUL WHITE CURS DE CURS HATS
TRIMMED BAND SILK & VELVET RIBBON
CHERRY, WHITE, OR BLACK
Shs. 27/60

PERVIA VELVET TOGGS
TRIMMED VELVET
HOSES AND
LEAVES
Shs. 28/75

GENT'S
BUCKKIN
TENNIS SHOES
Shs. 20/60 per pair



PLAIN SPORTS FREE HATS
IN LEMON, WITH MAROON RIBBON
BAND
Shs. 15/75 each

BLACK COODOR VELOUR
TRIMMED TRICHOLOUS
SILK RIBBONS
Shs. 25/60



ALL BLACK COODOR
VELOUR
BLACK SILK
RIBBON
Shs. 22/60
each

GENT'S BLACK
REINFORCED
COTTON HALF HOSE
Shs. 2/60 per pair



TOILET AND GOLF HOSE
KRAKI & LOVAT SHADES
Shs. 2/60 per pair
JACOB WOOD CAMEL HOSE
ALL SIZES
Shs. 2/60 per pair



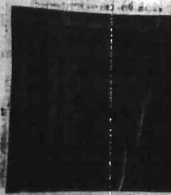
MORLEY'S BLACK
GENT'S FINE
COTTON HALF HOSE
Shs. 4/- per pair

BLACK COODOR
CAMEL HOSE
Shs. 4/60 per pair

ALL WOOD
CAMEL HOSE
Shs. 2/60 per pair

Soundest Values Ever Offered.

PRINTED BEDSPREADS.
MAUVE, BLUE, BROWN, AND GREEN
DESIGNS
SINGLE SIZE Shs. 12/60, 15/75, 14/60
DOUBLE SIZE Shs. 25/75 each



WIDE HORNETOON BEDSPREADS
Shs. 18/75 & 15/- each

RIDERDOWNS

OUT SIZE, 5' x 5'
Shs. 18/75, 22/60, 24/75, 28/75

5 1/2' x 5 1/2' Shs. 28/75

SINGLE BED SIZE
SAYERS
RIDERDOWNS
ASSORTED DESIGNS
AND COLOURS
Shs. 21/60 each

WHITE - MATEEN
QUILTS
Shs. 27/60 & 28/60 each

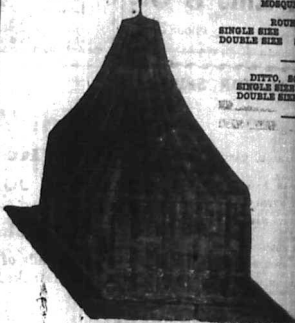
Our Goods & Value

WILL
Stand the Test of
Comparison



For Service Quality & Value
KENYA'S
Departmental Stores.

Quality the Test of Cheapness



ROUND
SINGLES SIZE
DOUBLE SIZE

DITTO SQUARE
SINGLES SIZE
DOUBLE SIZE

THE NEEDS OF THE HOME AT LOWEST PRICES

TERRA FOLD
CRAYERS
Cts. 50 ea. sh.

HARD
POTATO
COUPEERS
Shs. 1/60 each

LIGHTENING
WINDERS
Shs. 2/60 each

INFUSERS
FOR TEA
Shs. 3/60
each

EGG
TRENDS
Shs. 1/75
each

D. H. C.
COTTON
FRAGILE
Cts. 40 shds.

VERY STRENGTH
ASSORTED
WIRE MESH

FLOUR SIEVES

6" SIZE Shs. 2/-
8" SIZE Shs. 2/75
10" SIZE Shs. 3/-
12" SIZE Shs. 6/60
each.

NARROW
RUBBER
SHARD

ARTIFICIAL SILK
GANTER RIBBON
1" wide, Shs. 3/25
per yard
3" wide, Shs. 4/25
per yard
Cts. 15 per yard

FANCY TUTORIAL
GANTER RIBBON
1" wide, Shs. 3/25
per yard
3" wide, Shs. 4/25
per yard
Cts. 60 for 36."

LINEN BUTTONE
IN SETS OF 4
ASSORTED SIZES
Shs. 1/60 per packet

FLORED SILK
RIBBONS
ALL COLOURS
Cts. 25 per cart. 2

TORTOISESHELL
HAIR
STUDDED BRILLIANTS
Shs. 12/60

LARGE SPANISH
TORTOISE
SHELL HAIR COMBS
Shs. 12/75 each
SMALLER SIZE
Shs. 9/75 & 12/60

LADIES' ROSEPROOF
HOSE
IN WHITE, BLACK,
TUMBORE, LIGHT
BROWN, LACE
AND GLOUDDY
Shs. 7/60 & 12/75
per pair

LADIES' GARDENING GLOVES
IN FAWN, PUTTY, CHAMPAGNE, AND GRAY
Shs. 4/60 and 5/- per pair

TOILET REQUISITES, - BEST VALUE OBTAINABLE

"STALLAX"
SHAMPOO
Shs. 4/-
per bottle

VIOLIA SOAP
BOXES OF 2 TABLETS
Shs. 2/60 per box

VIOLIA SOAP
VANDERING
Shs. 2/- per box

SOUDO
KURSER AND HONEYCOMB
Shs. 2/- to 21/60

EVAN'S SHAMPOO
Shs. 2/60 per bottle

LADIES' PATENT
LEATHER BELLS
ASSORTED SHADERS
Shs. 2/- & 2/60 each

60 YARDS
GREEN
SHEER
Shs. 60 per yard

GUARANTEED THE LARGEST CIRCULATION OF ANY NEWSPAPER IN KENYA, UGANDA, TANGANYIKA AND ZANZIBAR.

The East African Standard

DAILY EDITION.

MOMBASA TIMES & UGANDA ARGUS.
THE OLDEST ESTABLISHED NEWSPAPER PUBLISHED IN KENYA AND UGANDA.

With which is incorporated **The LEADER.**

NAIROBI, MONDAY, FEBRUARY 12 1928

REVOLUTION IN PRICES!!
For the first time in this Colony since the American **RUBBER** Tropical. These are being offered at the following prices:

CHAPPELL ELYSIAN, £120

It is worth your while to purchase the following instruments when you can at these low guaranteed prices at the above agent.

Rtts Agents: **The KEA, MUSIC STORES, Co., Ltd., GOVERNMENT ROAD,**
Box No. 144 NAIROBI. Phone 225.

HEAVY TAXATION IN FRANCE.
CUSTOMS, LUXURIES, PROFITS FINANCED.
Default Budget Position.

([REPRODUCED FROM 'THE ASSOCIATED PRESS'])
Paris, February 9.—The heavy taxation in France is still increasing. The French Government has proposed a new measure to increase the rate of duty on certain goods. It is estimated that this will result in an increase of revenue of 200 million francs. The measure is expected to be passed by the Chamber of Deputies in the near future.

IRISH PEACE OFFER REFUSED.
De Valera Only to be Recognized.
THINKING REBEL, BARRER.

London, February 9.—The Irish Government has refused to recognize the Government of Eire as a legal government. The British Government has offered to recognize the Government of Eire as a legal government, but the Irish Government has refused to do so.

KORU FARMERS. **A THIKA FETE.**

Thirty-five miles from Nairobi, a group has been formed to improve the Thika road. The group has been formed to improve the Thika road and to provide for the convenience of the farmers in the district.

IN THE HEART OF A COFFEE PLANTATION.
Saturday's Event at Karamati.

The Karamati plantation has been visited by the Government. The plantation is one of the most successful in the country and is a model of efficiency.

The Lesson of Olympia—

DUNLOP
still supreme

If the first sound trading principle is to handle what is most in demand—your best and obvious policy :: is to concentrate on ::

DUNLOP CORD

MOTOR SHOW 1922
Total number of types fitted to vehicles exhibited 2333
DUNLOP 1947 (8472)
Divided between 52 other makes 1688

The **CORD TYRES OF TO-DAY**

GIVING WAY.
Not an Unpleasant But a Creacher.
AGREEMENT REACHED.

Constantinople, February 9.—An agreement has been reached between the British and Turkish governments regarding the future of the Straits. The agreement is expected to be signed in the near future.

M.C.C. AND SOUTH AFRICA.
OPENING OF THE FOURTH TEST MATCH.

A Collins and Binns. The M.C.C. has been successful in their efforts to secure the services of Collins and Binns for the South African tour.

COMPANY RESOLUTIONS.
THE ASSOCIATION OF COLLECTORS.

The Association of Collectors has been formed to improve the conditions of the collectors in the country. The association is expected to be successful in its efforts.

THE ASSOCIATION OF COLLECTORS.
THE ASSOCIATION OF COLLECTORS.

The Association of Collectors has been formed to improve the conditions of the collectors in the country. The association is expected to be successful in its efforts.

WE SERVE

Hence Our Name

EITHER We give better satisfaction to all our customers whether the matter be as simple as a car or as complex as a house.

OR We make that reputation built up upon unflinching attention to our customer's needs.

We expect you to take pride in our name and reputation as producers of good value and workmanship.

The Service Co. Ltd.
Showrooms: Sixth Avenue, Nairobi. Tel: 867/8/9. Highways 217.

Egyptian Cabinet Resigns.
Great Power's Government Droops King.

Cairo, February 9.—The King Fuad has accepted the resignation of the Egyptian cabinet. The king has also accepted the resignation of the Egyptian Government.

Empire Exhibition.
Government Will Consider Bidding Out.

London, February 9.—The Government is expected to announce the results of the bidding for the Empire Exhibition. The Government is expected to announce the results of the bidding for the Empire Exhibition.

Obituary.
DEATH OF THE DISCOVERER OF X-RAYS.

The death has occurred at Munich of Dr. Röntgen, the discoverer of the X-rays. Dr. Röntgen was a German physicist and mathematician.

Obituary.
DEATH OF THE DISCOVERER OF X-RAYS.

The death has occurred at Munich of Dr. Röntgen, the discoverer of the X-rays. Dr. Röntgen was a German physicist and mathematician.

WE SERVE

Hence Our Name

EITHER We give better satisfaction to all our customers whether the matter be as simple as a car or as complex as a house.

OR We make that reputation built up upon unflinching attention to our customer's needs.

We expect you to take pride in our name and reputation as producers of good value and workmanship.

The Service Co. Ltd.
Showrooms: Sixth Avenue, Nairobi. Tel: 867/8/9. Highways 217.

WHITEWAY, LAIDLAW & Co., Ltd.

The House for the Best Value in all Departments.

FORGANS' ST. ANDREWS GOLF CLUBS.

Every Club made by an expert and thoroughly tested before leaving the works. Made of hand made of the finest selected ash. An enormous assortment of Drivers, Brainers and all kinds of Irons.

OUR PRICE, Shs. 15/00 each.

SILVER KING GOLF BALLS.

Green, Yellow, Blue or Red.

OUR PRICE, Shs. 2/00 each.

THE CAPTIVE GOLF BALL for practice.

Improves your stroke by practicing with this handy capture ball. Iron ground spike and long length of string twine with velvet fittings. Price, Shs. 1/6.



THE "AMERHAM" BOYS' CRICKET SET.

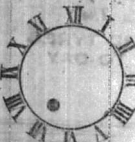
Complete set of double wickets, two bats and ball, complete in box. Size for boys about 4 years. Price, Shs. 14/6.

THE "BUDO" ASSOCIATION FOOTBALL.

Right Panel selected Corbridge Cases, warranted hand sewn. Full regulation size, complete with Pure Rubber Heelers, No. 5. OUR PRICE, Shs. 15/6.



CLOCK GOLF.



The Popular Game played on Small Lawns.

Each set contains a metal square (Right) regulation signs, tin hole and chain for describing the circle, with instructions complete.

OUR PRICE, Shs. 17/60

TENNIS RACQUETS.

- Stanger's Standard Shs. 30/00
- Stanger's Deluxe Shs. 30/00
- Stanger's Tropical Debuty Shs. 20/00
- Prorer's Phoenician Shs. 20/00
- Davis' Kinsley Excelsior Shs. 20/00
- Ayres' G.H. Deant Shs. 20/00

TENNIS BALLS.

Stanger's 1923 Hard Court is best quality sealed cylinders. Always in first class condition. Shs. 20/ per dozen.

SPECIAL LINK.

Prorer's Hard Court Tennis Balls, recently imported in good condition, stamped 1922. Shs. 27/ per dozen.



Spencer's Hand made Indian Coats—

Cloves of exceptional quality at a moderate price.

Flannels—20, Shs. 15/6. A remarkable fine cheviot. Often imitated, but never equalled.



The "De Luxe" English made Fancy Cotton Tunic Shirts, in really neat stripes of Blue, Hints, Pink, Grey or Black on White ground. With double cuff and box plait front. All sizes stocked. At a special low price. Price, 9/00 each.



Ribbed Socks. Pure Wool in summer shades of Heather, mixture. Remarkable value. Price, Shs. 2/00 per pair.

Men's Natural Wool Coll. Belts—Medium weight. To slip on. Cannot ride up and most comfortable to wear. All sizes stocked. Price, Shs. 7/00 each.



The "St. Margaret" Sports Coat Sweater, exact style to illustration above, with long sleeves and button front. Made of strong heavy Wool in a good medium weight. Colors include Grey, Brown, Green, Fawn and Heather mixture. Size 36, 38 and 40in. chest. Price, Shs. 25/00.



The "Handsome" Grey Flannel Trousers, for general holiday wear. Dependable well made—goods cut on a stylish line, hane and look exceptionally well. Raised seams, 2 1/2" permanent turn up, belt loops and pockets. In Light and Dark Grey. Sizes, 30 to 40in. waist in stock. Price, Shs. 20/00 per pair.



Men's White Coopers Tull Tennis Shirts—A splendid wearing and good value shirt, made from Coopers Tull. Delightfully cool and comfortable. All sizes in stock. Price, 7/00



"Malcolm" T.O.T. Golf Hats—All Wool Ribbed Stockings, colour of Champagne, with self-edged toes. Price, Shs. 12/00 per pair.



The "Whiteaway" Waterproof Double Breasted Gaiter Coat, in Black or Yellow. Made from a heavy strong material and thoroughly waterproof. Fitted with storm collar and button flap. All seams securely sewn. Length, 46, 48, 50, 52, 54 and 56in., and 30 up to 40in. chest measurements. Price, Shs. 65/00 each.



The "Marlowe" Blue Dressing Overalls—A very useful and comfortable garment for the motorist and engineer. Made from strong Navy Drill, complete with hip and braces, including two side pockets. All sizes in stock. Price, Shs. 14/00 per pair.

Men's Strong Cotton Puttees—Superior, made for real rough wear. These puttees are proof against spear grass and will stand well. Just the Puttee for Shamblers and Sufferers wear. Made from stout Indian webbing, in Huesitt shade only. Price, Shs. 10/00 per pair.



The "Court Perfect" Evening Dress Shirts—English make. A good, smart style with pleated fronts and starched linen cuffs. All sizes in stock. Price, Shs. 14/00 each.



Jogger All Wool Outshure Half Hose, Chappagne color, plain outshure seamless, spliced toe and heels. Wonderful value. Price, Shs. 4/00 per pair.

"Melita" 19 Inch Double Sided Dressing Boots—Black, Brown, Instrumental and Dress Make. A large selection to choose from. Price, Shs. 8/00 each.

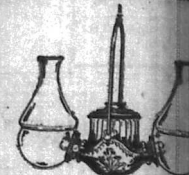


"Pyramid" High Quality Handkerchiefs, made from fine lawn, with smart colored borders. Price, Shs. 21/00 per dozen.



"E.V.D." American White Cotton Wear for Men. These selected garments are known to excel in every way in the standard of high-grade summer underwear. Made from the finest "Mette" Nainsook, cool, crisp, neat, lasting right down to the finish with shaven. Sizes, 32 to 40in. chest. Price, Shs. 7/00 each.

THE FAMOUS "ANGLE" HANGING LAMP.



Angle Lamps cast no shadows and burn less oil than other lamps. Reservoir made of strong cast metal, expanded to form a fish double burner. Will adequately illuminate a room 10 square.

OUR PRICE, Shs. 63/0.



ENAMELLED IRON TOILET SERVICES.

Comprising Seven Pieces—Bain, Ewer, Full with Spoon, Two Chambers with Covers, Soap Dish and Tooth Brush. Shaded Roman Finish, Colours—Royal Blue and White and White, Brown and White. Best British Manufacture.

PRICE COMPLETE, Shs. 54/0.

COB BRUSH DOOR MATS Hard-wearing closely woven Colour Mats, with thick pile; thickness 1 1/2 inches size, 24" x 14". Excellent Value. Price, Shs. 4/00	BLACK AND WHITE LUDLOW Good Quality Linen, with White Drawings. Size, 6 feet size. Price, Shs. 17/00 per dozen.
--	---



"ORIENT" Black or Tan Selected Calf Boots. Strong Waxed Sole. A splendid wearing line. Rational or Derby Front. Price, Shs. 26/0.



"E.V.D." American White Cotton Wear for Men. These selected garments are known to excel in every way in the standard of high-grade summer underwear. Made from the finest "Mette" Nainsook, cool, crisp, neat, lasting right down to the finish with shaven. Sizes, 32 to 40in. chest. Price, Shs. 7/00 each.

TAN GRAINED CALF BOOTS Medium Weight Sole, very comfortable fitting. British made throughout. All Sizes. Price, Shs. 25/0.

LARGE LIGHT CONVENIENT OFFICES TO BE LET IN THE FRONT OF OUR BUILDING.

WHITEWAY, LAIDLAW & Co., LTD. The Sixth Avenue NAIROBI

TO LET. FURNISHED HOUSE. TWO LAPS HOUSE. TO LET. SMALL HOUSE. TO LET. HOUSE. TO LET. HOUSE.

TO LET. HOUSE. TO LET. HOUSE. TO LET. HOUSE. TO LET. HOUSE.

TO LET. HOUSE. TO LET. HOUSE. TO LET. HOUSE. TO LET. HOUSE.

TO LET. HOUSE. TO LET. HOUSE. TO LET. HOUSE. TO LET. HOUSE.

TO LET. HOUSE. TO LET. HOUSE. TO LET. HOUSE. TO LET. HOUSE.

TO LET. HOUSE. TO LET. HOUSE. TO LET. HOUSE. TO LET. HOUSE.

TO LET. HOUSE. TO LET. HOUSE. TO LET. HOUSE. TO LET. HOUSE.

TO LET. HOUSE. TO LET. HOUSE. TO LET. HOUSE. TO LET. HOUSE.

TO LET. HOUSE. TO LET. HOUSE. TO LET. HOUSE. TO LET. HOUSE.

TO LET. HOUSE. TO LET. HOUSE. TO LET. HOUSE. TO LET. HOUSE.

TO LET. HOUSE. TO LET. HOUSE. TO LET. HOUSE. TO LET. HOUSE.

TO LET. HOUSE. TO LET. HOUSE. TO LET. HOUSE. TO LET. HOUSE.

TO LET. HOUSE. TO LET. HOUSE. TO LET. HOUSE. TO LET. HOUSE.

TO LET. HOUSE. TO LET. HOUSE. TO LET. HOUSE. TO LET. HOUSE.

TO LET. HOUSE. TO LET. HOUSE. TO LET. HOUSE. TO LET. HOUSE.

TO LET. HOUSE. TO LET. HOUSE. TO LET. HOUSE. TO LET. HOUSE.

TO LET. HOUSE. TO LET. HOUSE. TO LET. HOUSE. TO LET. HOUSE.

TO LET. HOUSE. TO LET. HOUSE. TO LET. HOUSE. TO LET. HOUSE.

TIMBER FOR EVERY PURPOSE. E. S. M. Ltd. NAIROBI. Prompt Delivery.

UGANDA RAILWAY. Fresh Fruit In Season AT WIMBURST'S. National Bank of India Limited.

IMPORTANT NOTICE. Your Best Joy-Ride. Kikuyu Hotel. E. NICHOLAS.

NOTICE NAIROBI WATER SUPPLY. MEDICAL OFFICER OF HEALTH. C. E. BROWNE, LIMITED. BATHS.

MARTIN'S SAPOLESTEEL. Ivory Necklines. Kamiti Ranch.

THE ASSOCIATION GAME. HUGE CROWDS AT ENGLISH FOOT MATCHES. SOME OF THE SURPRISING RESULTS.

London, January 14. Copy Competition. The first round of the copy competition was held at the Victoria Theatre last night.

THE GOLFERS. The first round of the golf competition was held at the Victoria Theatre last night.

THE RIFLES. Yesterday afternoon (Sat 17) the rifle competition was held at the Victoria Theatre last night.

RELIANCE FUEL. We are the cheapest Messengers in the East.

LOUIS REEVE. Automobile Repairs. We are the cheapest Messengers in the East.

Table with 2 columns: Railway Name, Rate. Includes Great Northern, Great Eastern, Great Western, etc.

THE PROPERTY INCLUDES A 14 H.P. BUSINESS TWIN CYLINDER ENGINE. The list of stock can be seen any day up to the day of sale.

YOU CANNOT BE TOO CAREFUL WHAT YOU DRINK. SUPPLY THE FINEST MINERAL WATER. PURE SPRING WATER.

THE ATTENTION OF THE PUBLIC IS DRAWN TO THE FACT THAT THE ABOVE SUPPLY IS LIABLE TO CONTAMINATION AND THAT THE CONSUMPTION OF UNBOILED WATER MAY BE DANGEROUS.

APPLIES PLUMS PINES STRAWBERRIES FRESH DEVONSHIRE CREAM. Gracedillas, Rhubarb, Cape Gooseberries, Tree Tomatoes, Mangoes, Oranges, Pau Pau Bananas, Lemons, Limes.

Salad, Radishes, Tomatoes, Lettuce, Table-Celery. A Light Car for home leave.

ALL WORK GUARANTEED. POSHO. FRESH GROUND GUARANTEED. THE POSHO SUPPLY CO., Ltd.

TYPENYING BUREAU. MARGARET BIRNBOURNE. STRICTLY CONFIDENTIAL. MARTIN'S SAPOLESTEEL.

CRYSTAL SPRINGS

AERATED WATER Co., Ltd.

The Finest Mineral Water produced in this Country

Daily Delivered by our Motor Service

P.O. Box 155



Telephone 134, 47

120 Miles per hour DURANT WINS BIG RACE IN AMERICA

Lawsons Garage

Box 203 Phone 103

THEATRE ROYAL

TO-NIGHT TUESDAY & WEDNESDAY

Drama Entitled **"LOYALTY"**

The Love Story of an actress
Interest Film In the Land of Monkeys & Snakes

Pathe's Gazette
COMEDY

AURORAL DYES

FOR **Dainty & Delicate Fabrics**
The New Cold Water Tints.
Lavender, Pink, Pale Pink, Small Pink, Cream, Silver Grey, Apple Green, Blue de Nil, Primrose, Pink, Brick, Rose, Peach, Emerald, Navy Blue, King Fisher Blue, Steel Brown.

SOLD BY
A. H. WARDLE & Co., Ltd.,
CHEMISTS
NAIROBI. P. O. Box 103

STANDARD CALENDAR

February 12 Annual Meeting E.A.F.U., New Stanley Hotel, 4.30 p.m.
Friday February 16—Massing Hill New Stanley Hotel.
Monday, Feb 19—Annual general meeting of League of Mercy, New Stanley Hotel, 10.30 a.m.
Saturday, February 21—Special General Meeting of the British Association of Major Officers of the Indian Army, New Stanley Hotel, 10.30 a.m.
Wednesday, February 28—Annual General Meeting, Kenya Jockey Club, New Stanley Hotel, at 10.30 a.m.

BIRTHS.
GHUYS—At Station Estate, on February 20th, to Madam "de la Col. F. L. A. Ghuy, a daughter.

THE EAST AFRICAN STANDARD

Monday, Feb. 12, 1929

THE LARGER OF THE TWO...
The larger of the two...
The larger of the two...
The larger of the two...

SMART POLICE

The effects of the...
The effects of the...
The effects of the...
The effects of the...

The "Brass Tack" Argument and Goodyear Belting

FORWARD—The tests of construction of Goodyear Belts is the same as that of Goodyear Tyres—namely—a course of high grade, long staple cotton possessing great tensile strength, thoroughly impregnated with resilient, tough rubber which binds the strands permanently together, greatly increasing its strength and protecting each fibre and strand from all effects of moisture, oil and friction.

What Goodyear Tyres will stand

Exposed to the sun and coming in direct contact with hot roads, the best being increased by friction between road and tyre, Goodyear Tyres stand up perfectly.

Everyone knows that a tyre may be exposed to rain or run on wet roads without suffering the slightest damage and without stretching or shrinking.

Tyres coming in direct contact with rough, gritty and rocky roads will run for thousands of miles without undue wear.

Goodyear Belts will stand

The worst test conditions under which a belt may operate outside are not as severe. Goodyear's Goodyear Belt can be run exposed to the sun or a temperature of 150 deg. without suffering in any way whatever.

Just so, a Goodyear Belt is perfectly waterproof and can be run in the rain or under conditions where the belt is constantly splashed with water.

If you can stand thousands of miles of this kind of wear, what chance has a smooth pulley surface of causing wear on a Goodyear Belt?

Goodyear Belts sell at a remarkably low price in spite of their high quality and the degree of service they render

Gillfillan & Company, Ltd.

HOPMOBILE CARS FOR HIRE (EUROPEAN DRIVERS)



T. G. FISHER,
Phone 158 or 290
NAIROBI.

M. R. DE SOUZA & Co.,

Telephone 78 GOVERNMENT ROAD. P.O. Box 120

JUST OPENED

New Consignment of Japanese, Japanese and some Assorted Goods, Ladies' and Gent's Millinery and Cotton Goods, Gent's Washable Sports Coats, Children's Jersey Suits, Frost and Radio Shield (Shirt), Fall-out Shirt Buttons, Assorted Rolled Gold Toilet Goods, Gent's Evening Coats, Anglo-French Braces, etc., etc.

We have greatly reduced our prices and we guarantee satisfaction UNDER THE NEW MANAGEMENT OF MR. THOMAS PRINCE.

Uplands Sausages & Lard.

Customers are notified of the following

FURTHER REDUCTIONS:--

Pork Sausages } 15 cents per lb lower
Lunch do } than
Lard in Packet } 25 cents per lb current
Bladders & tins } than Price list.

Use exact Order and respectfully saluted.



The Largest Stocks in Kenya
WHITE-POR QUANTIN
Gailey & Roberts
NAIROBI - NAIROBI - ELDORE

the opinion of the...
the opinion of the...
the opinion of the...

DISTRICT MEETINGS...
District meetings...
District meetings...

TO-DAYS CAUSE...
To-day's cause...
To-day's cause...

AN EXCEPTIONAL...
An exceptional...
An exceptional...

TO-MORROW'S...
To-morrow's...
To-morrow's...

DAILY WEATHER...
Daily weather...
Daily weather...

Weather Report...
Weather report...
Weather report...

HOSPITAL. Britain's Debt to America. Representatives Announce the Agreement.

LOCAL FOOTBALL. COUNCIL MEETING OF THE ASSOCIATION. Proposals for Annual Meeting.

INDIA AND INDIANS. ONE OF THE CHIEF CAUSES OF THE PRESENT URGE. THE Indian Men of Education.

BRITAIN'S DEBT TO AMERICA. The House of Representatives has agreed to an agreement...

LOCAL FOOTBALL. A meeting of the Council of the Football Association of Kenya...

INDIA AND INDIANS. HERITAGE LEFT BY THEIR HERITAGE YOU SHALL ENJOY THEM.

BECKETT & DEMPSEY. FIGHT ARRANGED FOR NEXT JULY.

Balance Sheet. The report of the Finance Committee...

HERITAGE LEFT BY THEIR HERITAGE YOU SHALL ENJOY THEM. (BY A TWENTY YEARS RESIDENT IN INDIA.)

INTERNATIONAL RUGBY. English Heavily Outwitted.

Annual Meeting. It is resolved that the annual general meeting should be held at the Railway Institute on Monday...

HERITAGE LEFT BY THEIR HERITAGE YOU SHALL ENJOY THEM. (BY A TWENTY YEARS RESIDENT IN INDIA.)

INTERNATIONAL RUGBY. English Heavily Outwitted. In the first match...

Club Proposals. The following resolutions were passed by Mr. Grew...

HERITAGE LEFT BY THEIR HERITAGE YOU SHALL ENJOY THEM. (BY A TWENTY YEARS RESIDENT IN INDIA.)

INTERNATIONAL RUGBY. English Heavily Outwitted. In the second match...

Club Proposals. The following resolutions were passed by Mr. Grew...

HERITAGE LEFT BY THEIR HERITAGE YOU SHALL ENJOY THEM. (BY A TWENTY YEARS RESIDENT IN INDIA.)

INTERNATIONAL RUGBY. English Heavily Outwitted. In the third match...

Club Proposals. The following resolutions were passed by Mr. Grew...

HERITAGE LEFT BY THEIR HERITAGE YOU SHALL ENJOY THEM. (BY A TWENTY YEARS RESIDENT IN INDIA.)

INTERNATIONAL RUGBY. English Heavily Outwitted. In the fourth match...

Club Proposals. The following resolutions were passed by Mr. Grew...

HERITAGE LEFT BY THEIR HERITAGE YOU SHALL ENJOY THEM. (BY A TWENTY YEARS RESIDENT IN INDIA.)

INTERNATIONAL RUGBY. English Heavily Outwitted. In the fifth match...

Club Proposals. The following resolutions were passed by Mr. Grew...

HERITAGE LEFT BY THEIR HERITAGE YOU SHALL ENJOY THEM. (BY A TWENTY YEARS RESIDENT IN INDIA.)

INTERNATIONAL RUGBY. English Heavily Outwitted. In the sixth match...

Club Proposals. The following resolutions were passed by Mr. Grew...

HERITAGE LEFT BY THEIR HERITAGE YOU SHALL ENJOY THEM. (BY A TWENTY YEARS RESIDENT IN INDIA.)

INTERNATIONAL RUGBY. English Heavily Outwitted. In the seventh match...

Club Proposals. The following resolutions were passed by Mr. Grew...

HERITAGE LEFT BY THEIR HERITAGE YOU SHALL ENJOY THEM. (BY A TWENTY YEARS RESIDENT IN INDIA.)

INTERNATIONAL RUGBY. English Heavily Outwitted. In the eighth match...

Club Proposals. The following resolutions were passed by Mr. Grew...

HERITAGE LEFT BY THEIR HERITAGE YOU SHALL ENJOY THEM. (BY A TWENTY YEARS RESIDENT IN INDIA.)

INTERNATIONAL RUGBY. English Heavily Outwitted. In the ninth match...

Club Proposals. The following resolutions were passed by Mr. Grew...

HERITAGE LEFT BY THEIR HERITAGE YOU SHALL ENJOY THEM. (BY A TWENTY YEARS RESIDENT IN INDIA.)

To the Members of the R.E.A.A.A. Kenya Colony. Perhaps you would like to dig deeper into the reasons that make U.S. ROYAL CORD the measure of all other tyre values. Then just step up casually to some of your fellow motorists and put the question. The makers of U.S. ROYAL CORDS Would rather have you take another car owner's opinion than their own.

THE McMillan Estates. 'Phone 165. NAIROBI. For 3125. TENNIS SHOES FOR LADIES GENTS WHITE BUCKSKIN 47/- RUBBER SOLES GENTS WHITE CANVAS 22/- GENTS FLEET FOOT PILMOSES 13/- LADIES WHITE CANVAS 21/- LADIES WHITE BUCKSKIN 30/- CHILDREN'S CHILDREN'S SHILLINGS GENTS WHITE BUCKSKIN 47/- RUBBER SOLES GENTS WHITE CANVAS 22/- GENTS FLEET FOOT PILMOSES 13/- LADIES WHITE CANVAS 21/- LADIES WHITE BUCKSKIN 30/- CHILDREN'S PILMOSES All Prices in Shillings Maxwell Brady & Co. The Footwear Store NAIROBI.

CORRECTION!!! ANY STATEMENT MADE as applied by any other customer is FURNISHED AND NOT RESPONSIBLE FOR THE SAME. THE ONLY COPY OBTAINABLE IN THIS COUNTRY.

STACOBS 2nd. 124. 677.

THE EAST AFRICAN STANDARDS

OVERSEAS MAILS

This section is based upon the latest advice from the Shipping Agents. It is possible, however, that circumstances may require...

Mails will be closed at the Main Post Office on a Sunday before...

Table with columns: Steamers, Ports, Dates, Mails. Lists arrivals from South Africa, East Africa, etc.

Table with columns: Steamers, Ports, Dates, Mails. Lists departures to various ports.

Cable Cables taking parcel mail...

STEAMER MOVEMENTS

Table with columns: From Europe, To Europe, Dates, Mails. Lists steamers like 'Doris', 'Doris', etc.

L. ROSENTHAL, TURF ACCOUNTANT

Trust Chambers, Government Road. Book now open on the Lincoln & Grand National. Doubles on the above races 250-1.

THE CYCLOSTYLES THAT WORK

Advertisement for Cyclostyles featuring a bicycle image and text: 'SELF FEEDING ROTARY. Price £47-10. ALL SPARES AND ACCESSORIES IN STOCK'.

KENYA AND S. AFRICA

Union Trade Commissioner Interviewed

By Sir Bruce Chapple, head of the Union Trade Commissioner. Interviewed on his arrival at a special representative of the United Kingdom...

ROUND THE LINKS

A GREAT MATCH BETWEEN TWO CHAMPIONS

The "Kimbali" Peites. London, January 10. It is seldom that a match goes with such large numbers...

NAIROBI VISITORS

The following visitors stayed at the Nairobi Hotel... Mr. J. J. Hunter, Mr. W. I. Bannister, etc.

NEW SEASONS FIGS AND FRENCH PRUNES

from R. B. D. "The Green". Royal Baking Powder, Black Pepper, Beans, etc.

Kenya Stores

Government Road, NAIROBI. Tel. 62. Rubber Stamps, Standard Stationery Stores.

WHATEVER APPEALS TO YOU

In good Scotch Whisky, you will find in Watson's "No. 10". JAMES WATSON & CO. LTD. Distillers of Scotch Whiskies, DUNDEE.

GETS OF QUALITY



GIFTS SUITABLE FOR GENTLEMEN. Gift watches from - £8 to £25. Silver Cigarette Cases - £2 to £5.

KENYA MARBLE QUARRIES COMPANY

For Building, Plastering, etc. Marble for Monumental Work, Headstones, etc.

MAGADI The Scientific Cleanser

Stronger & Superior in Every Way to Washing Soda. Will not Injure the most Delicate Fabric.

HAVE YOU SEEN THE CASH BOOT STORES

PRICES? Prior to their Removal to Government Road on the 15th inst.

Advertisement for NPIO Scotch Whisky with a logo and text: 'Whatever Appeals to You'.

Advertisement for 'GETS OF QUALITY' featuring golf balls and gift lists.

Advertisement for E. DOBBIE Jeweller, Silverware & Optician.

Advertisement for Kenya Marble Quarries Company.

Advertisement for Magadi Scientific Cleanser.

Advertisement for Cash Boot Stores.

Advertisement for Union Castle Line: 'COASTAL MAIL STEAMERS TO ENGLAND'.

Advertisement for R. E. A. CORPORATION, LTD. INLAND MAIL.

Advertisement for United Netherlands Navigation: 'Holland Africa East Line'.

Advertisement for S.S. 'HOOGKERK' Homebound via The Cape.

Advertisement for British India Steam Navigation: 'BOMBAY-DURBAN STEAMERS'.

Advertisement for Smith, Mackenzie & Co. Agents: 'Kilindi, Tanga Dar-es-Salaam'.

Advertisement for John Haig & Co. Markinch: 'Gold Label Whisky'.

Linen of Splendid Reliability

MORROCCOS' COTTON SHEETS



"So soft and comfortable."

MORROCCOS' FILLED PILLOW CASES
25" x 35"
Shs. 5/75, 9/00, 10/00, 12/00

MORROCCOS' PLAIN DITTO
Shs. 2/25, 2/75, 3/00, 4/-

HEMSTITCHED DITTO
Shs. 3/75, 4/-, 5/25, 7/-

MORROCCOS' SHEETS	per yard	MORROCCOS' SHEETINGS	per yard
50 x 54 PLAIN	Shs. 21/-	54" x 72" TWILL	Shs. 3/75
50 x 54 HEMSTITCHED	Shs. 25/00	54" x 72" LIME FACED	Shs. 4/00
50 x 56 PLAIN	Shs. 27/00	54" x 72" STRAWE	Shs. 4/50
50 x 56 HEMSTITCHED	Shs. 32/00	54" x 72" MORROCCOS'	Shs. 5/00
56 x 72 PLAIN	Shs. 45/00	50" x 100" HEMSTITCHED	Shs. 11/00
56 x 72 HEMSTITCHED	Shs. 49/00		Shs. 7/25
100 x 80 PLAIN	Shs. 65/00		Shs. 9/00
100 x 80 HEMSTITCHED	Shs. 69/00		and 10/00

Druggist's Sundriesmen. LARGE NEW & FRESH STOCKS

OVALINE
AN IDEAL TONIC
FOOD BEVERAGE
Shs. 2/50 bottle

Debility
Iron Jelloids #2A
Chemia
Iron Jelloids #2
Shs. 2/50 per box

QUININE HYDROCHLOR TABLETS
20's Shs. 2/75
100's Shs. 9/-

WATKIN'S EMULSIFIED COCOANUT OIL SHAMPOO
Shs. 2/75 bottle

PATENT FOODS, JUST ARRIVED.
GLAXO Shs. 2/50 & 6/- per tin
HORLOCKS Shs. 3/50 & 6/- per tin
BENBROS Shs. 4/10 per tin

New Stocks of Ready Made Gent's

"BUNGAREE" NAVY COLLAR SUITS Shs. 24/75
"BUNGAREE" TROUSERS In All Sizes, Shs. 12/75 per pair.

REDFORD COED RIDING BREECHES BUCK FRAPPOINGS TO LACE
Shs. 20/- per pair

WHIP CORD DITTO EMBROID MARE
Shs. 57/- per pair

GARMENTE DITTO
Shs. 20/- per pair

DITTO EMBROID MAKP
Shs. 44/00 per pair

SPORTS TWEED SPORTS COATS PAWN, GREY, CHECKER AND HEAT DRESS
Shs. 22/00, 27/00, 62/00, 67/00, 72/00, 84/00

GENT'S PAWN FOLINETTE 2 1/2 SACKETS
Shs. 21/50 each

For Satisfaction & Prolonged Service

GARDEN ROLLERS
DOUBLE PLOUGED DRUMS
18" DRUM Shs. 187/00
20" Shs. 207/00
22" Shs. 227/00
24" Shs. 250/-
26" Shs. 266/-

THE NEW BEATRICE BOX IRONS
FOR WOOD OR CHARCOAL
Shs. 15/75 each

The Largest Furnishing Establishment IN Kenya Colony

JACOBS LIMITED

DEPARTMENTAL STORES
— For True Economy —
Try Our Service

Boot and Shoe Specialists.

WHITE CANVAS COURT SHOES
Shs. 21/- per pair
LACE DITTO
Shs. 24/00 per pair

LADIES' WHITE RUBBER LACE SHOES
Shs. 45/- per pair

ANKLE STRAP
Shs. 20/75 & 45/- per pair

BLACK PATENT JESTER SHOES
Shs. 25/00 per pair

RIGGER SUIDE SANDAL SHOES
Shs. 55/00 per pair

GENT'S PATENT OXFORD SHOES
Shs. 25/75 per pair
COURTS
Shs. 24/00 per pair

WHITE JESTER SHOES
Shs. 25/00 per pair
COURTS
Shs. 45/- per pair

Ammunition at Lowest Prices

ELYE'S 12 BORE SMOKERLESS CARTRIDGES
Shs. 5/- per 100

ELYE'S 12 BORE SMOKERLESS STUTOR CARTRIDGES
Shs. 29/- per 100

ELYE'S 12 BORE BRANCHED PEANOID S.E.G. CARTRIDGES
Shs. 24/- per 100

12 BORE S.E.G.
Shs. 29/75 per 100

75 MAUSER S.K.
Shs. 20/- per 100
375 NITRO EXPRESS
Shs. 10/50 per 100

6.5 MANLIKHERR SCHWAVER
Shs. 24/- per 100
4.5 PORTUGUESE MAUSER
Shs. 24/- per 100

MILLINERY & HATS OF CORRECT STYLE.

PLAIN BLAKE FELT HATS TRIMMED WITH CORDED SILK RIBBON
Shs. 10/50 each

LADIES' FELT HAT IN DULL COPPER SHADE
Shs. 21/75

PLAIN BLAKE FELT HAT TRIMMED WITH PLEATED RIBBON
Shs. 10/75

GREEN COLOURED STRAW HAT TRIMMED WITH MILBON TO MATCH
Shs. 21/00

COFFEE COLOURED TRIBLE STRAW WITH COFFEE AND REDDISH BROWN RIBBON
Shs. 20/50

WHITE STIMMED FELT HAT FOR SPORTS WEAR
Shs. 21/-

LADIES' BLAKE FELT HAT TRIMMED BLACK
Shs. 15/00

Grocery & Provision Dept.

NEW FRESH STOCKS—LOWEST PRICES

SPECIALY PACKED IN 1 LB. PACKETS

THE FAMOUS "UGALLA"

ABSOLUTELY PURE

RED LABEL Shs. 2/75
BLUE LABEL Shs. 2/00
GREEN LABEL Shs. 2/00

GUARANTEED THE LARGEST CIRCULATION OF ANY NEWSPAPER IN KENYA, UGANDA, TANGANYIKA AND ZANZIBAR.

THE EAST

DAILY EDITION.

African Standard

KOMBASA TIMES & UGANDA ARGUS. With which is incorporated The LEADER.

NAIROBI, TUESDAY, FEBRUARY 13, 1939

REVOLUTION IN PRICES!! For the first time in the history since the American... CHAPPELL ELYSIAN, £120

£10 More than any Car in Kenya. Let us prove it. WATSON & BEAM LTD.

The M.C.C. and South Africa.

SPRINGBORS LEAD ON THE FIRST INNINGS. Home Hits Out. (SPECIAL SUPPLEMENT) On Monday, February 13 the second day of the fourth test match between the M.C.C. and South Africa opened today in the Wanderers ground...

"WAR WILL GO ON"

Victory... If We Stand United. LIAM LYCH'S APPEAL. (SPECIAL SUPPLEMENT) The war will go on until the country's independence is recognized by the nations, foreign and domestic...

MARRIAGE BY ORDER

SURPRISE WEDDING IN ANGOA. Best is Best. The "Angolan women" problem is solved in sweeping fashion by the National Assembly of Angola...

HOME FOOTBALL

ENGLISH LEAGUE. FIRST DIVISION. The Arsenal 2, Notts Forest 0. Manchester City 1, Aston Villa 1. Birmingham 2, Chelsea 1...

LATEST RESULTS BY SPECIAL CABLE

English Cup Third Round. South Shields 1, Blackpool 0. Bradford 1, Luton 0. Millwall 1, Ipswich 0.

INTERNATIONAL

Switzerland. The Swiss national team has defeated the Czechs in the first round of the World Cup tournament...

NOTE

Public notice regarding the closure of the office for a few days due to the illness of the manager.

DEPT.

Departmental news and updates regarding government activities.

AGAIN

News regarding the return of the ship 'Again' from its voyage.

ITEMS FROM FRANCE

News from France including reports on the political situation and military movements.

Tennis Championships

RESULTS OF COVERED COURT. The following are the results of the tennis matches played at the covered court...

Men's Singles

J. Cohen (France) the holder, defeated Gilbert (England), 6/4, 7/5, 6/4. Ladies Doubles. Miss McKane and Mrs. Beaman (England) defeated Miss Gok and Miss Vassell (Australia), 6/1, 6/1.

Men's Doubles

Cochran and Coates (France) beat Trizer and Irving (Australia), 6/1, 6/1, 7/5.

Mixed Doubles

Miss McKane and W. G. Cawley (England) beat Mrs. Beaman and Gilbert (England), 6/3, 6/3, 6/3.

Britain's Debt

The Finance Committee has advised the D.M. Finance Bill to be favourably reported with some amendments.

KENYA.

Now is your hour of test and now you stand above the politician's petty chat. The cause of Africa is yours; stretch out your hand. And may your sons discern you if you fall now in this time of trial, to stand fast. And keep for them the freedom of the past. If there a man alive who does not feel stirred by the passion of a mighty cause; are we not all united to one end. Not to destroy the police and break the laws. But for the country's good, the black man's sake, To keep the faith that those at home would break. It cannot be that we shall stand aside. To throw away our trust for most of shame, Giving the future into alien hands. To smirch with dust and filth our country's name. Rather we swear whatever time may send To give our all, unto the utmost end.

CLERK IN TROUBLE

The Registrar of the High Court has issued a writ of habeas corpus for the release of a clerk who has been detained in custody.

S.A. GOVERNMENT TO RENEW THE BONDAGE

The Natal Mercury is officially informed that the end of the 1938-39 financial year is in the possession of the Government to renew the bond of voluntary repatriation of Indians. It will be recalled that the scheme was inaugurated on July 1, 1938, when over 7,000 Indians have been repatriated...

AMATEURS IN A

The Labour Conference at Dar-es-Salaam has decided to publish the names of those who have been recommended for the award of the 'Labourer's Medal'...

KNOWN TO COMPANIONS

P. B. DUFFY in reference to your letter, which we can not publish, has been referred to a committee...

MONEY MARKET

London, February 12. Money market quiet. Treasury bills 3 1/2%.

The Lesson of Olympia - DUNLOP still supreme. If the first sound trading principle is to handle what is most in demand - your best and obvious policy is to concentrate on :: DUNLOP CORD 80 x 3 1/2 Shgs. 125 815 x 105 " 225. MOTOR SHOW 1922. Total number of tyres fitted to vehicles exhibited 3885 DUNLOP 1947 (4472) Divided between 30 other makes 1668. Newton's LIMITED. SIXTH AVENUE, NAIROBI.

ANYTHING YOU WANT FOR A Stock Always on hand. Fuel, Oil, Tyres, Accessories. WE ARE AT YOUR SERVICE Economy in type CORSEY INFLATION. The Service Co. Ltd. Telephone 817. P. O. Box 599.

WHITEAWAY, LAIDLAW & Co., Ltd.

The House for the Best Value in all Departments.

FORGAN'S ST. ANDREWS GOLF CLUBS.

Every Club made by an expert and thoroughly tested before leaving the works. Shirts all hand made of the finest selected cloth. An enormous assortment of Drivers, Brummies and all kinds of Irons.

OUR PRICE, Shs. 15/00 each.

SILVER KING GOLF BALLS.

Green, Yellow, Blue or Red. Doz.

OUR PRICE, Shs. 4/50 each.

THE CAPTIVE GOLF BALL for practice.

Improve your stroke by practicing with this handy captive ball. Iron ground spikes and long length of strong twine with several fittings.

Price, Shs. 2/.



THE "AMERICAN" BOYS' CRICKET SETS.

Complete set of double wicket, two bats and ball, complete in box. Size for boys about 4 years. Larger sizes.

THE "BUDO"

ASSOCIATION FOOTBALL.

Right Panel, selected Cowhide. Cases, warranted hand sewn, full regulation size, complete with Para Rubber bladder, No. 3.

OUR PRICE, Shs. 15/.

CLOCK GOLF.

The Popular Game played on Small Lawns.

Each set contains metal figures (Figures) regulation figures, tin hole and chain for describing the clock, with instructions complete.

OUR PRICE, Shs. 17/00



TENNIS RACQUETS.

ALL NEW STOCK IN Warehouse's Showroom.

- Shannon's Dream Shs. 25/00
- Shannon's Tropical Derby Shs. 20/
- Prussia's Triumph Shs. 20/
- Dorby's Derby Racquet Shs. 15/
- Ayer's R.H. Doubt Shs. 7/
- Shs. 10/

TENNIS BALLS.

Shannon's 1923 Hard Court Balls, recently imported, good condition, stamped 1922.

Shs. 27/ per dozen.



SPECIAL LINE.

Shannon's Hard Court Tennis Balls, recently imported, good condition, stamped 1922.

Shs. 27/ per dozen.

Spencer's Hand-made Indian Cigars.

Cigars of exceptional quality at a moderate price.

Flaniers—100, Shs. 15/.



The "De Luxe" English made Fancy Cotton Fines Ribbed, in really neat stripes of Blue, Hiale, Pink, Grey or Black on White ground. Will come with cuff and box plant front. All sizes stocked. At a special low price.

Shs. 2/00 each.



Ribbed Socks. English made from pure Wool in assorted shades of Heather-structure. Remarkable value.

Shs. 2/00 per pair.

Men's Natural Wool Collar Socks—Medium weight. To slip on. Cannot ride up and most comfortable to wear. In a good reliable Jumbo make. All sizes stocked.

Price, Shs. 7/50 each.



The "St. Margaret" Sports Coat Sweater, exact style to illustration above, with long sleeves and button front. Made of strong heavy Wool in a good medium weight. Colors include Grey, Brown, Green, Fawn and Heather-structure.

Shs. 25/



The "Knockabout" Grey Flannel Trousers, for general holiday wear. Dependable well made—good, cut on stylish lines, hang and look exceptionally well. Ribbed waist, 2 1/2 permanent turn up, both legs and pockets. In light and Dark Grey. Sizes, 30 to 40 in waist in stock. Price, Shs. 20/ per pair.

Shs. 20/ per pair.



Men's White Chequer Tweed Tuxedo Suits—A splendid wearing and good value shirt, made from Chequer Tweed. Delightfully cool and comfortable. All sizes in stock.

Shs. 7/50



"Moleton" S.O.T. Golf Shoes—All Wool Ribbed Stockings, color of Champagne with self-colored tops.

Price, Shs. 11/00 per pair.



The "Widowmaker" Waterproof Double Breasted Oilskin Coat, in Black or Yellow. Made from a heavy strong material and thoroughly waterproof. Fitted with steam collar and button flap. All sizes available. Lengths, 48, 48, 50, 52, 54 and 56 in., and 30 up to 44 in. chest measurements.

Price, Shs. 40/ each.

LARGE LIGHT CONVENIENT OFFICES TO BE LET IN THE FRONT OF OUR BUILDING.

The "Hardwear" Blue Dimples Greenalls—A very useful and comfortable garment for the motorist and sportsman. Made from strong Navy Drill, complete with belt and buttons, including two out side pockets. All sizes in stock. Price, Shs. 13/00 per pair.

Price, Shs. 13/00 per pair.

Men's Strong Cotton Puttees—Superior make for real rough wear. These puttees are great against spear grass and will wash well. Just the Puttee for Shamba and better wear. Made from stout Indian webbing, in Black and Olive only.

Price, Shs. 2/ per pair.



Men's Strong Cotton Puttees—Superior make for real rough wear. These puttees are great against spear grass and will wash well. Just the Puttee for Shamba and better wear. Made from stout Indian webbing, in Black and Olive only.

Men's Strong Cotton Puttees—Superior make for real rough wear. These puttees are great against spear grass and will wash well. Just the Puttee for Shamba and better wear. Made from stout Indian webbing, in Black and Olive only.

Price, Shs. 2/ per pair.



Finger All Wool Cashmere Hosiery—Champagne color, plain or with small patterns, applied toes and heels. Wonderful value.

Price, Shs. 4/00 per pair.

"Moleton" 10 inch Double Sided Greenalls—Hosiery—Hosiery, Instrumental and Dimples Made. A large selection to choose from.

Shs. 5/00 each.



PYRAMID HANDKERCHIEFS
Best's High Quality Hosiery.
made from fine lawn, with smart colored borders.

Shs. 21/ per dozen.

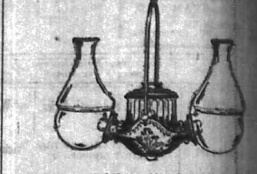
"E.V.D." American White Cotton Wear for Men. These celebrated garments are known to stand by the world over as the standard of high-grade summer underwear. Made from the finest Made in Malaya. Front right vent, button right down the front, without sleeves. Size, 32 to 44 in. chest.

Price, Shs. 7/00 each.

"E.V.D." Undergarments to match White Shirts to be made up as Undergarment Suits. All sizes.

Price, Shs. 7/ each.

THE FAMOUS "ANGLE" HANGING LAMP.



Angle Lamps cast no shadows and burn less oil than ordinary lamps. Some are made of strong sheet metal, cylindrical surface with finish double burner. Will adequately illuminate a room 10 square.

OUR PRICE, Shs. 62/.

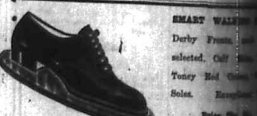


ENAMELLED IRON TOILET SERVICES.

Comprising Seven Pieces—Basin, Trench, Pail with Wagon, Two Chambers with Covers, Soap Dish and Tooth Brush Rest. Special Finish. Colours—Royal Blue and White, Green and White, Brown and White. Best British Manufacture.

PRICE COMPLETE, Shs. 50/.

COLE BREW DOOR MATS High-wearing closely woven Good Quality Lin. Shs. 10/ thickness 1 1/2 inches, size 14" x 14". Excellent Value. Shs. 4/50	BLACK AND WHITE "LEGGINGS" Good Quality Lin. Shs. 10/ White Draughted Lin. 6 feet wide. Shs. 17/00 per pair
--	---



"ORIENT"
Black or Tan Selected Calf Boots. Strong Welted Sole. A splendid wearing line. Balmoral or Derby Fit.

Price, Shs. 20/.



TAN GRAINED CALF BOOTS
Medium Weight Sole, very comfortable fitting. British made throughout. All Sizes.

Price, Shs. 35/.



WHITEAWAY, LAIDLAW & CO., LTD. The Sixth Avenue Store NAIROBI.

KENYA HIGHLANDS.

WITHIN THE REARDS OF MOUNT ELGOZ.

Train No. 1.

A Light Car for home towns

(W. B. Thompson) ... the ... station ...

Carried ... by the ...

The ... of the ...

Upon this ... of about ...

... of the ...

... of the ...

... of the ...

... of the ...

... of the ...

... of the ...

... of the ...

... of the ...

... of the ...

... of the ...

... of the ...

... of the ...

... of the ...

... of the ...

... of the ...

... of the ...

... of the ...

... of the ...

... of the ...

... of the ...

... of the ...

... of the ...

... of the ...

... of the ...

... of the ...

... of the ...

... of the ...

... of the ...

... of the ...

... of the ...

... of the ...

... of the ...

... of the ...

... of the ...

... of the ...

... of the ...

SOAP!

SUPERIOR OLD ESTABLISHED AND PURE.

Are the qualities bearing the name of GOSAGE

SPECIALISTS IN ALL CLASSES OF Soaps and makers of the famous

BLUE MOTTLLED BRANDS

STAR NAVY OXFORD BLUE MOTTLLED BLUE MOTTLLED BLUE MOTTLLED

Manufacturers Wm. Gosage & Son Ltd. Walsby, England.

Local Agents: Buchanan & Barnet, Ltd. P. O. Box 174, Nairobi.

SAVE TIME TROUBLE AND EXPENSE

by planting proved varieties of grafted acclimatised fruit-trees, guaranteed to grow and fruit in Kenya Colony.

PLANTING SEASON COMMENCES END OF FEBRUARY.

Send at once for Our new 1928 illustrated descriptive catalogue and price list sent post free on application containing our special offer of 20% reduction on the first 500 orders received.

Geo. Stuart Watt, Donoy Sabu Orchards & Nurseries, P. O. Chania Bridge.

INEXPENSIVE STATIONERY

MANY COMMERCIAL LINES HAVE ARRIVED. OTHER GOODS, INCLUDING SOCIAL STATIONERY DUE SHORTLY EX "NORMAN" & "KORANIA."

25% off the Few Diarists left.

GOVERNMENT W.T. TAWS & CO. ROAD NAIROBI.

EADIE'S FOOTWEAR LTD.

NEW GOODS ARRIVED BOYS SCHOOL BOOT & SHOES

Willow & Bee Call Brown Suede Brogue Sho. 35/6 THE E BRAND

Send for our 1928 illustrated descriptive catalogue and price list sent post free on application containing our special offer of 20% reduction on the first 500 orders received.

JOSIA LONAA AND GALE NIGHT

THEATRE ROYAL

PER. 17/8 Single 17/8 Double 18/10

At Double 18/10

At Double 18/10

At Double 18/10

At Double 18/10

At Double 18/10

At Double 18/10

At Double 18/10

At Double 18/10

At Double 18/10

At Double 18/10

At Double 18/10

At Double 18/10

At Double 18/10

At Double 18/10

At Double 18/10

At Double 18/10

At Double 18/10

At Double 18/10



Tin Problem Solved

It keeps tea perfect in the tropics - by vacuum. Tea in this vacuum tin is always as fresh, crisp and flavoured as the day it left the factory.

You should insist on Brooke Bond tea in this tin. Then, when you are tired, your tea will refresh you.

It is the delightful and stimulating beverage which tea at its best can be.

Brooke Bond vacuum packed

in the vacuum-packed tin.

is more than ordinary tea.

is the BEST QUALITY.

is the BEST QUALITY.

is the BEST QUALITY.

is the BEST QUALITY.

is the BEST QUALITY.

is the BEST QUALITY.

is the BEST QUALITY.

is the BEST QUALITY.

is the BEST QUALITY.

is the BEST QUALITY.

is the BEST QUALITY.

is the BEST QUALITY.

is the BEST QUALITY.

is the BEST QUALITY.

is the BEST QUALITY.

is the BEST QUALITY.

is the BEST QUALITY.

LOAN & DISCOUNT COMPANY, LIMITED.

Boma Buildings, Nairobi.

Lent on note of hand in sums from

£1 to £1,000

with Confidence Ensured

GEORGE BLOWERS, General Contractor, Joinery and Furniture Manufacturer.

of the Victoria Street in the Country.

WOOD, FRAMES, OFFICE TRAYS.

ANY ARTICLE TO ORDER.

Plans for the Complete Woodwork for any house.

Plans for the Complete Woodwork for any house.

Plans for the Complete Woodwork for any house.

Plans for the Complete Woodwork for any house.

Plans for the Complete Woodwork for any house.

Plans for the Complete Woodwork for any house.

Plans for the Complete Woodwork for any house.

FOR SALE

Gene's Royal Ombre ...

Woolen Sweaters ...

Khaki Wool Officers ...

Khaki Wool Officers ...

Khaki Wool Officers ...

Khaki Wool Officers ...

Khaki Wool Officers ...

Khaki Wool Officers ...

Khaki Wool Officers ...

Khaki Wool Officers ...

Khaki Wool Officers ...

Khaki Wool Officers ...

Khaki Wool Officers ...

Khaki Wool Officers ...

Khaki Wool Officers ...

BLUSES for every occasion.

GOWNS for Day and Evening wear.

DAY FROCKS, TAILORED COSTUMES.

REST GOWNS, DRESSING GOWNS.

LINGERIE-TROUSSEAUX a Speciality.

GLOVES—the best makes of the best makers.

HOSIERY—Silk and Lisle.

Speciality—SILK HOLEPROOF HOSE.

MILLINERY including "Condor" and other Standard Tailored Hats.

CORSETS—the Latest Models.

Sole Agents for "J.B." Corsets.

CH'LDREN'S DRESSES for Day & Evening wear.

SCHOOL FROCKS.

Everything for Children's Wear and Infants' Garments in particular.

Laces Ribbons

Trimnings Fancy Bags.

Waring's, Africa House, Government Road, Nairobi.

THEATRE ROYAL

TONIGHT & WEDNESDAY

Drama Entitled "LOYALTY" The Love Story of an actress

Interest Film in the Land of Monkeys & Snakes

Pathe's Gazette COMEDY

SLIPPERINE BALL ROOM FLOOR POLISH USE SLIPPERINE RATHER THAN WAX

Sprinkle Lightly Over the Floor. THE DANCERS DO THE REST.

Fragrant Perfume. No Dust. No Trouble. Saves Time

WARDLE & Co. Chemists, NAIROBI. Phone 56.

CRYSTAL SPRINGS

AERATED WATER Co., Ltd. The Finest Mineral Water produced in this Country

Wholly delivered by our Motor Services P.O. Box 150 Telephone 126, 677

120 Miles per hour DURANT WINS BIG RACE in AMERICA Lawson's Garage Box 203 Phone 103

ECONOMISE BY FITTING OVERSIZE TYRES ON YOUR CAR

30 x 3 1/2 - 31 x 4 MICHELIN CORD TYRES 815 x 105 - 815 x 120 MICHELIN CORD TYRES

The MOTOR MART & EXCHANGE Ltd NAIROBI.



There must be a reason.

Why those who have tried Goodyear Belting now prefer it to any other kind.

WITHOUT a single exception every Steel Estate, Coffee Factory, Saw Mill, Main Mill, and Printing and Publishing Works in this country which has tried on Goodyear Belting, now insist upon it and are replacing their other Mills with Goodyear as rapidly as the former wear out.

IN EACH CASE they have had long experience with various brands of canvas and leather belts, but they say that never in their experience have they ever used a belt which ran so true and smoothly, clung to the pulleys so securely (and without the use of dressing), gave so little trouble, and stood up so well as Goodyear Belting.

GOODYEAR BELTING represents the highest development of transmission belting, whether leather, rubber or canvas, and it sells at a remarkably low price in spite of the long wear and high quality service which it renders.

Full particulars from Gilfillan & Company, Ltd. NAIROBI AGENTS FOR



HUPMOBILE CARS FOR KEINE (EUROPEAN DRIVERS)



T. G. FISHER, Phone 155 or 290, NAIROBI.

M. R. DE SOUZA & Co. P.O. Box 150

JUST OPENED

New Consignment of Japanese, Japanese and some Assorted Sports Ladies' and Gent's Suits, Sweaters and Cotton Shirts, Gent's Woollen Sports Coats, Children's Jersey Suits, Furs and Black Stuffs (Buffs), Full-out Short Bottoms, Assorted British Gold Six Pins, Gent's Evening Caps, Single-Frased Buttons, etc., etc.

We have greatly reduced our prices and we guarantee satisfaction UNDER THE NEW MANAGEMENT OF MR. JOHN FREDERICK

Uplands Sausages & Lard.

Customers who visited at the following Park Sausages Lunch do Lard in Packet Blenders & tin 18 cents per lb 10 cents lower than current Price list.

Increased Orders are respectfully solicited.



The Largest Stocks in Kenya WRITE FOR QUOTATION Gailey & Roberts NAIROBI - NAIROBI - ELDORET

STANDARD CALENDAR

Friday, February 10 - Maasai Hall New Stanley Hotel. Monday, Feb. 19 - Annual general meeting of League of Mercy, New Saturday, February 24 - Special General Meeting, Impoverished Men's Association at Major Heron's home, 2.30 p.m. Wednesday, February 28 - Annual General Meeting Civil Service Athletic Association. Wednesday, February 28 - Annual General Meeting, Kenya Jockey Club, New Stanley Hotel, at 10.30 a.m. Wednesday, February 28 - Annual General Meeting, Agricultural Society, New Stanley Hotel, 4.30 p.m.

BIRTH. HURTON ALLEN - On February 10th, at the Kenya Nursing Home, the wife of Captain R. Hurton Allen, a son.

THE EAST AFRICAN STANDARD

TUESDAY, FEB. 15, 1928.

THE SOLUTION MANAGER OF THE RAILWAY Uplands Belting... THE EAST AFRICAN STANDARD... TUESDAY, FEB. 15, 1928. THE SOLUTION MANAGER OF THE RAILWAY Uplands Belting... problems will be this way. We have had an opportunity of probing into some of the many problems which confront him. The Uplands Railway must surely be something of a big game to any man, however expert he may be. In South Africa, no doubt, they had their problems in past days, problems now almost forgotten. The country is exactly like another country, and generally schemes of administration in Kenya in the past have arisen largely from the belief on the part of the administrator that some which worked excellently in some other, older land must also give good results in a new land like Kenya. In countries such as Great Britain or India, where there are numerous precedents pending a train with may train at some great moment in one day, we must not be misled in a month, conditions most of necessity be extraordinarily different from those obtaining in such a new country as ours. Here we have just emerged from the time of the bullock waggon, the time when "gravel bottoms" and last for Henry Ford, we should still be wondering at the relative speed and comfort of the Kenya railway coach, compared with other methods of travel, or the foot "sledge" "saddie". The motor coach is no official of railway service, but we have to remember that this was a more a larger population and a greater density of traffic, we shall have to put up with something, a little less than the efficiency and

REMEMBER... "Baby Blue"... WET WEATHER... THINK DISTRICT... HAVE YOU GOOD... E.A.W.L. The annual... ME DIDN'T MATTER... A BOON TO FARMERS... MEDITION... AGRICULTURE...

BOARD RESOLVE

INGO Goods received for short of one pound in some new cases. His Honor the County Court Judge, Mr. Justice, has ruled in favor of the plaintiffs...

TO LET

EXCELLENT Office in Cashmere Building, near... Apply D.H. A. Standard.

TWO Large HOUSES with every necessary modern... Apply D.H. A. Standard.

FOUR in Woodland Road... Apply D.H. A. Standard.

WOOD 4 from Home near Park... Apply D.H. A. Standard.

FOR one year or less, Mrs. B... Apply D.H. A. Standard.

CHINA alterations HOME... Apply D.H. A. Standard.

MISCELLANEOUS

TO LET or FOR HIRE... Apply D.H. A. Standard.

LADY returned from England... Apply D.H. A. Standard.

OPEN TO engaged Male... Apply D.H. A. Standard.

SITUATIONS WANTED

LADY returned from England... Apply D.H. A. Standard.

OPEN TO engaged Male... Apply D.H. A. Standard.

SITUATIONS WANTED

LADY returned from England... Apply D.H. A. Standard.

OPEN TO engaged Male... Apply D.H. A. Standard.

SITUATIONS WANTED

LADY returned from England... Apply D.H. A. Standard.

OPEN TO engaged Male... Apply D.H. A. Standard.

SITUATIONS WANTED

LADY returned from England... Apply D.H. A. Standard.

OPEN TO engaged Male... Apply D.H. A. Standard.

SITUATIONS WANTED

LADY returned from England... Apply D.H. A. Standard.

OPEN TO engaged Male... Apply D.H. A. Standard.

SITUATIONS WANTED

LADY returned from England... Apply D.H. A. Standard.

OPEN TO engaged Male... Apply D.H. A. Standard.

SITUATIONS WANTED

MECHANICAL MISCELLANEOUS

Engineering from a Popular Point of View.

LIMITATIONS OF MODERN HEAT ENGINES.

(Special to the E. A. Standard.)

In this article, an explanation is given of the principal reasons for the limitations of modern heat engines.

In the last article of this series... It is not possible to increase the temperature of the combustion chamber...

We have already discussed the limitations of heat engines... The first time that water is boiled it depends on the boiling point of the liquid contained in it.

There are two kinds of engines... The first kind is the steam engine... The second kind is the internal combustion engine.

The various conditions... In the steam engine, the water is heated in a boiler... The heat is transferred to the water...

TROPICAL DISEASES... It is hoped that the Scientific Exhibition of the British Empire will be more completely comprehensive than other exhibitions...

MILLINARY... MARIANE PARVILLE of London is reported to take orders for military, scientific, artistic, or sporting equipment...

Y.M.C.A. RESIDENTIAL CLUB... AN IDEAL RESIDENCE FOR MEN. Situated near the Victoria Park Station...

THE COLLEGE... Therefore, then, if in a closed air, light, warm, or condense air, water back into water a volume of water is prepared...

FLAX MARKET... Mr. A. H. Hill, representative... The principal feature of the work has been the devoted attention...

There are two kinds of engines... The first kind is the steam engine... The second kind is the internal combustion engine.

The various conditions... In the steam engine, the water is heated in a boiler... The heat is transferred to the water...

TROPICAL DISEASES... It is hoped that the Scientific Exhibition of the British Empire will be more completely comprehensive than other exhibitions...

MILLINARY... MARIANE PARVILLE of London is reported to take orders for military, scientific, artistic, or sporting equipment...

Y.M.C.A. RESIDENTIAL CLUB... AN IDEAL RESIDENCE FOR MEN. Situated near the Victoria Park Station...

THE COLLEGE... Therefore, then, if in a closed air, light, warm, or condense air, water back into water a volume of water is prepared...

THE COLLEGE... Therefore, then, if in a closed air, light, warm, or condense air, water back into water a volume of water is prepared...

THE COLLEGE... Therefore, then, if in a closed air, light, warm, or condense air, water back into water a volume of water is prepared...

EMERALD FOR EVERY PURPOSE E. S. M. Ltd. NAIROBI. Prompt Delivery

GIFTS OF QUALITY. E. DOBBIE, Jeweller, Silver Smith & Optician. RELIANCE FUEL WATTS-WHEEL-GIVE.

3 THREE FARM, LIMORU. Excellent Headquarters for supplying Settlers and others.

Wanted. Second-hand Books... We buy second-hand books in large or small quantities.

DAD AND DOUGLAS. A series of comic panels showing a man and a dog in various humorous situations.

Your Best Joy-Ride 18 Miles on a Good Road in the City Kikuyu Hotel

TYPEWRITING BUREAU Messieurs BROSSEAU, (Next to Whitehouse).

RELIANCE TRANSPORT Special attention with direct Europe...

LOUIS RENE Champagne Brandy with special notes and certificates.

S. J. HUMPHREYS Motor Cars FOR HIRE DAY OR NIGHT

Kamiti Ranch Game Station. Hunting or Trapping Allowed.

WA, AS SEEN FROM OUTSIDE

Manufacturers buying huge quantities of cotton... The Home people would be laughing at me... 'What was I doing in the Home people's hands?'

COFFEE PLANTERS' UNION

REVIEW OF THE PAST YEAR'S WORK

Question of Shipping Freight.

Getting ready for the annual meeting... A meeting of the Council of the Coffee Planters' Union... 'The trouble has arisen because the local agents say the only safe way is to present a getting shipping freight fixed in an office in Mombasa, and there to wait a while.'



To the Members of the R.E.A.A.A.

Kenya Colony. Perhaps you would like to dig deeper into the reasons that make

U.S. ROYAL CORD

the measure of all other tyre values. Then just step up casually to some of your fellow motorists and put the question.

The makers of U.S. ROYAL CORDS

Would rather have you take another car owner's opinion than their own.



THE McMILLAN ESTATES, INC. NAIROBI. Phone 100. For 310.

These people have their own... 'I have been in the Home people's hands... 'What was I doing in the Home people's hands?'

Arising out of the minutes... 'The trouble has arisen because the local agents say the only safe way is to present a getting shipping freight fixed in an office in Mombasa, and there to wait a while.'

'Dear Sir... 'The trouble has arisen because the local agents say the only safe way is to present a getting shipping freight fixed in an office in Mombasa, and there to wait a while.'

'What was I doing in the Home people's hands?... 'I have been in the Home people's hands... 'What was I doing in the Home people's hands?'

'The trouble has arisen because the local agents say the only safe way is to present a getting shipping freight fixed in an office in Mombasa, and there to wait a while.'

'The trouble has arisen because the local agents say the only safe way is to present a getting shipping freight fixed in an office in Mombasa, and there to wait a while.'

Advertisement for JACOBS VARNISH STAIN. Includes text: 'JACOBS VARNISH STAIN', 'SHEETS', 'PINTS', 'QUARTS', 'SHE. 1/75', 'SHE. 2/75', 'SHE. 9/50'.

'The trouble has arisen because the local agents say the only safe way is to present a getting shipping freight fixed in an office in Mombasa, and there to wait a while.'

Advertisement for TENNIS SHOES. Includes text: 'TENNIS SHOES FOR LADIES AND CHILDREN', 'GENTS White Buckskin 47/-', 'Rubber Soles', 'GENTS White Canvas 22/-', 'GENTS Fleet Foot Plimsoles 13/-', 'Ladies White Canvas 21/-', 'Ladies White Buckskin 30/-', 'Childrens Plimsoles', 'All Prices in Shillings', 'Maxwell Brady & Co., The Footwear Store NAIROBI.'

'The trouble has arisen because the local agents say the only safe way is to present a getting shipping freight fixed in an office in Mombasa, and there to wait a while.'

'The trouble has arisen because the local agents say the only safe way is to present a getting shipping freight fixed in an office in Mombasa, and there to wait a while.'

OVERSEA'S MAILS

This notice is issued only for the benefit of those who are desirous of knowing the shipping dates of the mails...

Table with columns: Arrivals, Ship Name, From, Date of Arrival, Date of Departure.

Table with columns: Departures, Ship Name, To, Date of Departure, Date of Arrival.

Table with columns: Steamer Movements, Ship Name, Destination, Date.

L. ROSENTHAL, TURF ACCOUNTANT, Trust Chambers, Government Road.

Book notes on the Lincoln & Grand National. Doubles on the above race 250-1.

Mr. S. LAZARUS is authorized to accept bets on my behalf.

THE CYCLOSTYLES THAT WORK & Lastenon

SELF FEEDING ROTARY, Price 247-10

ALL SPARES AND ACCESSORIES IN STOCK

Standard Stationery Stores, 210-0-0

A Letter from London.

From Our Own Correspondent. London, January 29. It is hardly necessary to say that the...

The girl herself has started work and is putting on 'old clothes'... The girl herself has started work and is putting on 'old clothes'...

Disappointment. Publicly, we have had the impression that the Government...

The Free State troops are said to be very untrained and all the best men...

Internationally we have had the French advance into the Ruhr...

For the purpose of order, there is a suggestion on what I may call international peace...

WATER SURVEYS Power & Supply Schemes. WELL BORING. STIRLING & Co. ENGINEERS.

Table with columns: Ship Name, Destination, Date, Time.

MAGADI The Scientific Cleanser. Stronger & Superior in Every Way to Washing Soda.

Distributing Agents: TANTON, WHETHAM & BURMAN, P. O. Box 164, NAIROBI.

UMBRELLA. Made in England. Sole Importers: ROBERTS, NICHOLS & Co.

GUANO FARMERS AND PLANTERS CHEAPEST FERTILIZER. Seychelles Guano Co., Ltd.

HAVE YOU SEEN THE CASH BOOT STORES PRICES?

UNION CASTLE LINE. ROYAL MAIL STEAMERS TO ENGLAND. SERVICES TO England, East, South & West African Ports.

UGANDA RAILWAY. Commencing Saturday, February 17th and until further notice.

UNITED NETHERLANDS NAVIGATION CO. Holland Africa East India Line.

S. S. "HOOGKERK" Homeward via The Cape. This steamer will load on or about the 15th February.

British India Steam Navigation Co. AND Peninsular and Oriental Steam Navigation Co.

SMITH MACKENZIE & Co. Agents: Kilindi, Tangi Dar-o-Salaam & Zanzibar.

JOHN HAIG & Co., Ltd. MARKINCH. The Oldest Distillers in the World.

Gold Label Whisky. Glenleven Whisky. Blackburt & Barnett, Ltd.

WINTER and HIGGS.
 Agents for
A. HUNTER & Co., Ltd.
 Import & Shipping Agents.
 Furniture Removals.
 Collected and delivered in
 Parts of the World
Efficiency & Service.
 Duke Street, P.O. Box
 Nairobi, 382.

PARPAULINS
 Birkmyre Cloth
 Sizes
 9 ft. ... Shs. 70-00
 15 ft. ... Shs. 175-00
 15 ft. ... Shs. 208-00
Stephen Ellis & Co.
 NAIROBI Phone 34.

BELL MOTOR SPIRIT.
 LUBRICATING OILS
 HARDINGE STREET
 NAIROBI
 J. M. COLACO Proprietor.

GARGOYLE
 Engine & Cylinder Oils, Etc.
 Various grades in 4 gallon tin
 4-50 to 7-50 per gallon.
 Cylinder Oils.
 5 Shgs. to 8 Shgs. 10 per gallon.
 Engine Oils.
 4-12 and 5 Shgs. 5 per gallon.
 Various other grades of Oils for everything of machinery

SMITH, MACKENZIE & Co.
 Hardware, Kampala, Kisumu, Etc.
UNDER SINGH
 CYCLE DEALERS
 GENERAL REPAIRERS
 NAIROBI ROAD

CONVALESCENCE AT
Holmes Residential Farm, Limuru
ATTRACTIONS
 NINE HOLE GOLF COURSE - Pleasantly situated in park-like surroundings. Best Golf in Kenya. Two Tennis Courts; numerous walks and walks adjoining.
 LARGE COMFORTABLE LODGING - For Motor, Domestic and all forms of transport. Programme arranged. English food EVERYTHING PRODUCED ON THE SPOT. Our own English Beef, Mutton and Pork. Our own Eggs, Butter, Milk and Cream. Orchard in full bearing for Fruit Supply.
 WELL-FILLED STABLES - A Daim Old Horses available for riding. Trains arranged. Motor and other arrangements.
 SWIMMING BATH AND RACING TRACK - in view of
 ONE WEEK or OVER 30, 35 per day.
 TEA and LUNCHEONS at reasonable rates in Hotel or grounds. Practically the only place where the whole day can be spent pleasantly in the open.

WE DO NOT SELL ANTIQUES.
 Our Stocks of Chocolates and Confectionery are of the "Lena" and "Herman" and are absolutely fresh.
 THEY INCLUDE THE FOLLOWING:
PASCAL'S - Ritter Sweet Chocolate, Royal Swiss Chocolate, Venetian Almonds.
FERGUSON'S - Edinburgh Biscuits.
CLARICO - Lily Caramels, Mixed Pastilles, Biscuits, Peppars.
CALLARD & BOWSER'S - Buttercream, Nougats.
SHARP'S - Plain and Hot Super-Kream Toffees.
SPECIALTY. - Chocolates, especially suited for us by Pascal. Shs. 4/- per lb.
ELLIOTS.
 THE CONFECTIONERS
 70, GOVERNMENT RD., NAIROBI, P.O. No. 118.

CENTRAL LOUNGE.
 Where is it?
JUNCTION
 Victoria Street & River Road
 All brands of first class Wines and spirits stocked.
J. M. COLACO
 Proprietor.

REMINGTON TYPEWRITERS
 (THE WORLD'S PREMIER MACHINES)
 ARRIVING SOONLY
Remington Portable
 The Remington Portable is standard in every business because to the larger machines and has been built to suit the requirements of everybody who needs a typewriter for his or her personal use.
ITS STANDARD FEATURES ARE
 Single Shift, SMR Lock, Two Color Ribbon Attachment, etc., etc.
Remington Typewriter Agency
 Leader Buildings,
 GOVERNMENT ROAD, NAIROBI
 Phone No. 113.
 PRICE £12-10-0
 WITH 12 MONTHS GUARANTEE

JOKO
 EVERY MORNING BRING THEM

THE Nairobi Emporium's Annual Sale NOW ON

MOLO TIMBER Coy.
 Proprietor: W. J. BERTON
 TRADEMARK "LOGS" MARKED "MOLO" A.B.C. 6000 Lb.
GREAT REDUCTION OF PRICES - CEDAR AND HARDWOODS.
 SOARINGS - from 8s. 6d. to 3s. 6d. Super foot.
 BOARDS - from 11s. 6d. to 11s. 6d.
 FLOORINGS - from 11s. 6d. to 11s. 6d.
 LUMBERS - from 11s. 6d. to 11s. 6d.
 MOUTHLINGS - from 11s. 6d. to 11s. 6d.
 BEINGLES - from 11s. 6d. to 11s. 6d.
SPECIAL PRICE LIST ON APPLICATION.
SPECIAL NOTICE
 10% DISCOUNT OFFERED.
 10% Discount for Cash within 30 Days.
 A Further 5% with Order.
 Coffer Trays at 5s. 6-50 each less 5 per cent for cash.
IMMEDIATE DELIVERY
SEND YOUR ORDER NOW.

WHISKY
HAIG & HAIG CAUTION
 UNLESS YOU SAY "HAIG AND HAIG"
 You may get a less costly brand offered in substitution.
Mackinnon Brothers
 NAIROBI. Establish 1904. Box 24.
 Tel. 51.

INDISPENSABLE
The "Eveready" Stapler

A FACTORY ON THE DESK
 The Machine of a Household and also used in every Office and Store. 1000 Staples in use only. Cheaper than pins, 10c. In. With one roll paper in Magazine. 1000 Staples, 10c. 4 Roll.
 STOCKED BY
Standard Stationery Stores,
 and
 Box 166, Cambria Building, Nairobi

MONK & DOBSON.
 Automobile Electrical & Mechanical Engineers
 Contracts undertaken for Maintenance of Farm Engines (Steam, Oil or Petrol)
 Estimates, Specifications and Drawings Prepared.
 Tel. 552 Sixth Avenue Nairobi, P.O. Box 222

OUR PRICES
Up-country Orders Promptly Attended To
 GRAIN - 100 lbs. 10/-
 HAY - 100 lbs. 10/-
 SHEEP - 100 lbs. 10/-
 PIGS - 100 lbs. 10/-
 CHICKENS - 100 lbs. 10/-
 EGGS - 100 lbs. 10/-
 BUTTER - 100 lbs. 10/-
 MILK - 100 lbs. 10/-
 LARD - 100 lbs. 10/-
 SUGAR - 100 lbs. 10/-
 COFFEE - 100 lbs. 10/-
 TEA - 100 lbs. 10/-
 SPICES - 100 lbs. 10/-
 OILS - 100 lbs. 10/-
 FLOUR - 100 lbs. 10/-
 SOAP - 100 lbs. 10/-
 CANDLES - 100 lbs. 10/-
 TOBACCO - 100 lbs. 10/-
 SALT - 100 lbs. 10/-
 POTASH - 100 lbs. 10/-
 LIME - 100 lbs. 10/-
 CEMENT - 100 lbs. 10/-
 IRON - 100 lbs. 10/-
 STEEL - 100 lbs. 10/-
 COPPER - 100 lbs. 10/-
 BRASS - 100 lbs. 10/-
 ZINC - 100 lbs. 10/-
 ALUMINUM - 100 lbs. 10/-
 LEAD - 100 lbs. 10/-
 TIN - 100 lbs. 10/-
 SILVER - 100 lbs. 10/-
 GOLD - 100 lbs. 10/-
KANJEE NARANJEE
 Telephone No. 79 GOVERNMENT ROAD, NAIROBI. P. O. Box 387

CHANIA STORES THIKA
 ESTABLISHED 1890
 LARGE STOCK OF First Class Provisions at Competitive Prices.
 IRONMONGERY, HARDWARE, STATIONERY, Etc.
 WINES and SPIRITS, etc., only best brands obtained at lowest prices.
 Fresh Limbo Vegetables, Mandarins and Thursdays.
 Fresh Milk every Tuesday.
 Fresh Meat, Mutton, Poultry, Fishes, Friday and Saturdays.
 Fresh Mutton every Tuesday.
 Health food supplied in any quantity at current Market Rates.
 Cleaning and Pressing undertaken at reasonable Charges.
 Mangrove Oil and Glycerine always in Stock.
 Agents for Shell Motor Spirit and Green Kerosene Oil at Nairobi Prices.
 ENTIRE SATISFACTION GUARANTEED.
 Telephone Nos. 1 & 10018.
 Proprietors.

SMITHFIELD BUTCHERY
 For Quality, Variety, Quantity and Price not to be beaten.
 Lake Fish Monday, Tuesday and Friday mornings.
 Milk Fed Veal from Waterloo Farm on Saturdays.
 P. O. Box No. 6 Govt. Road NAIROBI.

SPECIAL NOTICE
HARTZ, BELL & LAWSON
 (1922) LTD.
 Having completed the necessary arrangements to ensure the opening of a NEW & ENTIRELY DISTINCT BRANCH of their Business activity
ELECTRICAL ENGINEERING & CONTRACTING
 THIS DEPARTMENT WILL BE Under the Direction of **MR. G. H. DODD**, (Late Chief Engineer to Messrs. Cable & Joseph.)
 And will embrace the following:
 Electric Light & Power Installations - Towns and Country.
 Sales of Electrical Material, a First Class, also Repair to all Classes of Electrical Machinery.
 Amusement Wiring.
 Consulting Engineering, Drawing, Installation, Factory Equipments, Steam, Oil, Ice, etc. or Water Driven.
ENGINEERS & OFFICES:
 HARRISON STREET, NAIROBI.
 Phone 162. Box No. 162.

The ESCARPMENT TIMBER Coy., Ltd.
 HAVE THE FINEST SELECTED CEDAR
 These Trees have known Prices and WE GUARANTEE THE BEST OF CEDAR
 OFFICE TRAYS, 740 S. FLOORS.
 LARGE STOCK OF SCANTLING, FLOORING, CELLULOSE, DOORS AND WINDOW FRAMES OF HARD WOOD.
 Phone No. 162. 162, HARRISON STREET, NAIROBI.

Linen of Splendid Reliability

HORROCKES' COTTON SHEETS



"So soft and comfortable."



HORROCKES' FRILLED FELLOW CASES
30" x 20"
Shs. 5/7s, 9/6s, 10/6s, 12/6s

HORROCKES' FLAIN DITTO
Shs. 2/8s, 3/7s, 3/6s, 4/-

HEMSTITCHED DITTO
Shs. 3/7s, 4/-, 5/2s, 7/-

HORROCKES' SHEETS

SIZE	FLAIN	HEMSTITCHED	PRICE
90 x 54	Shs. 2/-	Shs. 2/6	
90 x 54	Shs. 2/8	Shs. 3/0	
90 x 54	Shs. 3/0	Shs. 3/6	
90 x 72	Shs. 3/0	Shs. 3/6	
90 x 72	Shs. 3/6	Shs. 4/0	
108 x 60	Shs. 4/0	Shs. 4/6	
108 x 60	Shs. 4/6	Shs. 5/0	
126 x 84	Shs. 5/0	Shs. 5/6	
126 x 84	Shs. 5/6	Shs. 6/0	

Druggist's Sundriesmen.

LARGE NEW & FRESH STOCKS

OVALTINE
AN IDEAL TONIC
FOOD BEVERAGE
Shs. 2/60 bottle

QUININE HYDROCHLORIDE TABLETS
25's Shs. 2/7s
100's Shs. 9/-

Debility
FARRIEN'S CHEMICAL FOOD
Shs. 2/- bottle

Iron Jelloids #2A
Artemia
Iron Jelloids #2
Shs. 2/50 per box

PATENT FOODS, JUST ARRIVED.
GLAXO Shs. 3/60 & 4/- per tin
MILKINES Shs. 2/60 & 4/- per tin
BENGERS Shs. 4/10 per tin

New Stocks of Ready Made Gents

"DUNGAREE" NAVY BOILER SUITS
Shs. 24/7s

"DUNGAREE" TROUSERS
In All Sizes, Shs. 12/7s per pair.

REDFORD COED RIDING BREECHES
BUCK STAYING TO LACE
Shs. 26/- per pair

WHIP COED DITTO
SMASHY MAKE
Shs. 27/- per pair

GABRIETTE DITTO
Shs. 25/- pair pair

DITTO
SMASHY MAKE
Shs. 24/50 per pair

GENT'S TWEED SPORTS COATS
PAWS, GREEN, CHECKS AND HEAT DRESS
Shs. 22/50 27/50 28/50 27/50 22/50 24/50

GENT'S FAWN POPLINETTE
S.B. JACKETS
Shs. 24/50 each

GENT'S DRESS FLANNEL TROUSERS
2 EYES, 1 EYE, 3 EYES, 4 EYES
Shs. 4/10 4/10 4/10 4/10

WHITE GABRIETTE
Shs. 24/50 24/50

WHITE GABRIETTE
Shs. 24/50 24/50

KHAKI WRIST
TWEEDERS
Shs. 4/10 4/10

For Satisfaction & Prolonged Service



SAND, OR WATER-BALLAST

GARDEN ROLLERS

DOUBLE PLUGGED DRUMS

SIZE	PRICE
18" DRUM	Shs. 127/60
20"	Shs. 227/60
22"	Shs. 257/60
24"	Shs. 290/-
26"	Shs. 345/-

THE NEW
BEATRICE
BOX IRONS



FOR WOOD OR CHARCOAL
Shs. 15/7s each.

The Largest
Furnishing Establishment
IN
Kenya Colony
JACOBS
LIMITED
DEPARTMENTAL STORES
— For True Economy —
Try Our Service.

Boot and Shoe Specialists.

WHITE CANVAS COURT SHOES
Shs. 21/- per pair
LACE DITTO
Shs. 24/50 per pair

LADIES' WHITE RUBBER LACE SHOES
Shs. 40/- per pair

ANKLE STRAP
Shs. 30/7s & 45/- per pair

BLACK PATENT JUSTER SHOES
Shs. 52/50 per pair

HIGGEE SUEDE JUSTER SHOES
Shs. 58/50 per pair

GENT'S PATENT OXFORD SHOES
Shs. 28/7s per pair
COURTS
Shs. 24/50 per pair

WHITE RUBBER JUSTER SHOES
Shs. 45/50 per pair
COURTS
Shs. 45/50 per pair

Ammunition at Lowest Prices

ELLY PERCUMOID
E.M. SHOOT CARTRIDGES
Shs. 5/- per 100

ELLY'S 12 BORE SMOKELSS EJECTOR CARTRIDGES
Shs. 20/- per 100

ELLY'S 12 BORE DIAMOND PERCUMOID I.E.G. CARTRIDGES
Shs. 24/- per 100

12 BORE S.S.G.
Shs. 20/7s per 100

7.9 MAUSER S.N.
Shs. 26/- per 100

270 NITRO EXPRESS
Shs. 10/50 per 100

7.9 PORTUGUESE MAUSER
Shs. 24/- per 100

6.5 MANNLICHER SCHNAUSER
Shs. 24/- per 100

6.5 PORTUGUESE MAUSER
Shs. 24/- per 100

MILLINERY & HATS OF CORRECT STYLE.

PLAIN BLACK FELT HATS
TRIMMED WITH CORDED SELF RIBBON
Shs. 19/50 each

LADIES' FELT HAT
IN DULL COPPER SHADE
Shs. 21/7s

PLAIN BLACK FELT HAT
TRIMMED WITH PLEATED RIBBON
Shs. 19/7s

BURDE COLOURED STRAW HAT
TRIMMED WITH SATIN RIBBON TO MATCH
Shs. 21/50

LADIES' BLACK FELT HAT
TRIMMED BLACK AND PURPLE SILK
Shs. 19/50

COFFEE COLOURED TEARLE STRAW
WITH COFFEE AND BROWN SATIN RIBBON
Shs. 21/50

WHITE STITCHED FERT HAT
FOR SPORTS
Shs. 21/-

Grocery & Provision Dept.

NEW FRESH STOCKS—LOWEST PRICES

SPECIALTY
PACKED IN 1 LB. PACKETS

UGALLA ESTATE
Ceylon Tea

THE FAMOUS "UGALLA" TEA

ABSOLUTELY PURE

RED LABEL
Shs. 2/7s

BLUE LABEL
Shs. 2/50

GREEN LABEL
Shs. 2/50