

# EAST AFRICA AND RHODESIA

Thursday, October 18, 1956

30s. weekly post free

Vol. 23 No. 422

Registration No. 20000000000000000000

## BT

### FREIGHT & PASSENGER SERVICE

#### CONNECTING EUROPE WITH EAST AFRICA

Regular sailings maintained by a fleet of modern ships including the well known passenger liners s.s. 'KENYA' and s.s. 'UGANDA'

1856  
1956

BRITISH THORNTON NAVIGATION CO. LTD  
127, LEADENHALL STREET, LONDON, E.C. 3  
14-16, COLCHESTER STREET, NEW YORK, U.S.A.  
A HUNDRED YEARS OF SERVICE

'RAMBANGA' a 42-foot, 14-knot, shallow draft vessel designed for passenger and touring service in the Cameroons

Specially designed and built for African Service by

## ALDOUS SUCCESSORS LTD.

BRIGHTLINGSEA - ESSEX - ENGLAND

Reflection on the 1956 General Election





# DAUGHTY

AND COMPANY LIMITED

PREMIER handled in Commission with liberal advances on long sale.

RECEIVED all Customs requirements and all other

of all ports of call.

Classes of Services:

1. General Sea and Air

2. Marine

3. General Transits

4. General Salesmen

5. General Business

## BRANCHES

KENYA

MOBI

TANGANYIKA

HEBON

INDONESIA

HEBON

6th FLEET STREET LONDON, E.C. 4

Telephone: London 3000  
Cable: DAUGHTY LONDON  
Telex: DAUGHTY LONDON

ESTABLISHED 1840

# LE TOURNEAU

WEIGHHOUSE

Coffee

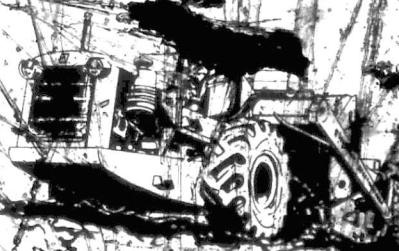
ALSO THE COMPANY IN EAST AFRICA AND COSTA RICA



LE TOURNEAU-WEIGHHOUSE

FIRST IN THE WORLD IN RUBBER TREAD

EARTH-MOVING EQUIPMENT



COMMERCE SERVICES IN BRITISH AND PORTUGUESE EAST AFRICA

HOLLAND-AFRIKA LIJN  
AMSTERDAM

# RIGGLESWORTH

A COMPANY OF THE RIGGLESWORTH GROUP

DIRECTOR GENERAL TRADE MARKS (HONG KONG) LIMITED

Rigglesworth & Co., 100, Victoria Embankment, London, E.C. 4







*The Bank Manager struck gold*

to many banks, and the gold was sold at a profit of 100 per cent. The bank manager's success was due to his close personal knowledge of gold markets and his ability to trade as the gold price rose.

within a fortnight £4,000 of gold was stored in the mine safe. Today the bank manager's success has closed the mine and he has become a gold trader and a gold manager in the early days.

**THE STANDARD BANK OF SOUTH AFRICA LIMITED**

**THE THREE BANKERS OF RHODESIA AND NYASALAND**

Over 200 offices in South Africa, Central Africa, assets and correspondents throughout the world. London Address: The Standard Bank, 77, Lombard Street, London, E.C.4. Telephone: 4000.

*Registered as a Company in the Republic of South Africa*

# CLAN-HALL-HARRISON LINES

JOINT SERVICE



## EAST AFRICA

From SOUTH WALE, GLASGOW, and BIRKBECK  
to MOMBASA, TANZANIA, DAR ES SALAM and  
if inditement MOMBASA and NAIROBI

SPECIALIST  
CERT FORM

Oct. 22  
Dec. 24  
1966

PORT SUDAN, MID SEA PORTS  
MOMBASA, TANZANIA, DAR ES SALAM, BERBERA, ADEN  
THE AFRICAN MERCHANTS LTD  
LONDON, E.C.4

## LYKES LINES

REGULAR EAST DIRECT SERVICE FROM SOUTH  
AND EAST AFRICAN PORTS TO GREAT BRITAIN

William Lykes	Late Oct	mid Oct
Louise Lykes	early Nov	mid Nov
Mavis Lykes	November	November
Suzanne Lykes	mid Nov	early Dec
Stephen Tipton	late Nov	early Dec
Marie Culbreath	early Dec	late Dec
John Lykes	late Dec	early Jan
John Lykes	early Jan	mid Jan

LYKES LINES AGENTS: 100, BARRAN, LONDON AND LIVERPOOL  
SPECIALIST CERT FORM



1677  
Dec. 1938

Discovered the  
"Electric Me"  
plant

To Medicine Stores and Distributors  
Agencies for the sale of Herbal  
remedies. Several excellent competitive  
lines. Liberate the world from the  
infections of the common cold of the  
East. THE HERRAL RESEARCH INSTITUTE  
Ching Tun - 1938. The first to be  
recorded at the Chinese Herbal Institute.  
A vitality tonic food. All operations  
terms subject to review.

THE HERRAL RESEARCH INSTITUTE  
Pantlers Road, London, E.C.1

Specialists in Western and Asiatic  
herbs of rarest quality

Highest Quality Products

CREWES	BRITISH MADE	POSSIBLE
Yarns	and Cotton	and Cotton
Lead Alloy	and Cotton	and Cotton
Tough Rubber	and Cotton	and Cotton
Sheathed	and Cotton	and Cotton

WINDLESIDE GILL WORKS LTD  
WINDLESIDE GILL WORKS LTD  
WINDLESIDE GILL WORKS LTD



# A. Baumann & Company Limited

(Incorporated in Kenya)

## ASSOCIATING SUBSIDIARIES

A. Baumann & Co. (East Africa) Ltd.

A. Baumann & Co. (Uganda) Ltd.

Mombasa, Malindi, Nakuru,  
Dare es Salaam, Kisumu

Wampala and

Prospect, Uganda

Exporters

Shipping Materials

★ Coffee

General Merchandise

★ Cotton

Electrical and General Machinery

★ All General Products

Refrigeration and Air-Conditioning Plants

★ of East Africa

## SUBSIDIARY COMPANIES

A. Baumann & Co. (London) Ltd.

A. Baumann & Co. (Uganda Coffee Mills) Ltd.

A. Baumann & Co. (Cotton) Ltd.

Steamships & General Agencies Ltd.

Fresh Foods Ltd.

The Uganda Refrigerated Storage Co. Ltd.

## SOLE PROPRIETORS

A.B.C. Foods, Nakuru, Provencher Millers

## ASSOCIATED COMPANIES IN EAST AFRICA

### INTERESTED FINANCIALLY AND AS AGENTS

Concrete Constructions (Uganda) Ltd.

Pre-Cast Concrete

East African Portland Cement Co. Ltd.

Cement

Leyland Paint and Varnish Co. (E.A.) Ltd.

Paints

Nurepho Chemicals (East Africa) Ltd.

Insecticides

Peirce, Baumann & Co. Ltd.

Cashew Nuts and Oil

Southern Mills Ltd.

Flour

Steel Brothers (Kenya) Forests Ltd.

Wool and Woollen Fabrics

The Uganda Grain Milling Co. Ltd.

Flour

## INTERESTED AS AGENTS

The Kenya Tanning Extract Co. Ltd.

Rhino Brand Waste Extract and Watermark

Blaclem Products Ltd.

Chemicals and Pesticide Products







*When the flute is heard in Zanzibar,  
all Africa East of the Equator must dance.*

This old Arab saying neatly summed up Zanzibar's position in East African affairs in the 1800's, for Arab traders from Zanzibar had, for many years, pierced the "Dark Continent" in search of ivory—black and white—establishing as they went varying degrees of subservience to the Zanzibar Sultans. It was therefore, perhaps appropriate, that the growth of the National Bank of India in East Africa should have started with the opening of a branch in Zanzibar in 1893. From this beginning grew the Bank's present system of branches covering Kenya, Uganda and Tanganyika, in the first two of which colonies the Bank is proud to hold the position of banker to the Government. All those interested in trade, travel or settlement in British East Africa are cordially invited to make use of the services provided by the Bank.

## NATIONAL BANK OF INDIA LIMITED

Head Office: 2, Bishopsgate, London, E.C. 2

West End (London) Branch: 11, St. James's Square, S.W. 1

In addition to its branches in KENYA, UGANDA, TANGANYIKA and ZANZIBAR, the Bank has branches in India, Pakistan, Burma, Ceylon, Aden and Somaliland Protectorate.





# EAST AFRICA

## RHODESIA

GREG RUSSELL, Editor

Telephone 2243

ASHEPIT, London

President	21	Country	22
South	21	Southern Rhodesia	22
African Elections	21	Emergency	22
Ethiopia and Somalia	21	Paraguay	22
Situation in Somalia	217	Stretse Khama	228
British Colonies	238	Timing News	22
Mr. Blundell on Issues	219		

Founded in 1954

Price

THURSDAY, OCTOBER 18, 1954

(All year, post-free)

# MATTERS OF MOMENT

STRENGTH OF OPINION has been made by Mr. Blundell, who, as best known member of his followers in the new Legislature, and that there was quite a chance that the latter would have the greater support. The Independent Group led by Mr. Blundell has, in fact, won eight of the fourteen seats and Mr. Blundell's claim to lead the European community has been unconvincing for many months, but this has appeared entirely that of the outstanding reason of the appeal to the electorate.

It confirms the judgment which East Africa and Rhodesia repeatedly expressed during the past two or three years, namely to the annoyance of many people in England and some in the United Kingdom, including a few influential members of both Houses of Parliament, who declining to see that he held the position that Mr. Blundell's position had been weakened by his vacillation and opportunism. He has, in his own words, been "confidently" and "now seem most unlikely that he will ever regain the power which he has at the time of his election to the leadership of the European members of the party of Rhodesia. He has shown himself to have no plans and no consistent minister, but the success of the Independent Group may rest in part, especially as the Africans accept the agreement only and Mr. Blundell and his own to the consideration that their agreement was for the last Legislature only. The defeat of Mr. Blundell is, regretfully, he was one of the most thoughtful and capable of the new ministers, though he took office of the same

terms and at the same time as Mr. Blundell. It was, in fact, by no means an automatic wholehearted transfer of his (Kenyatta) of so much talent and public life that he can afford to lose his services, and it is to be hoped that there will be a final settling of their. Mr. Blundell has also been a real success as a minister.

Heavy responsibilities now rest upon Group as a man of high as a leader of authority in the European, not official benches. He has served in the Legislature for only four years. Problems facing the Independent Group: but he has headed steadily in favour of a persistent determination to deal with each problem according to the merits of the case. There was no surer or more careful critic of the Government in the old House of Members for Mount Kenya; his own energy suffered severely from the Mau Mau uprisings, and he was useless in representing the needs of the area. Indeed his attacks on the administration for its manifold shortcomings were among the best speeches of the period. His followers ought now to feel that the main aim of their present campaign, with which he is in accord, is to secure the dates for the African constituencies will be their campaign, and the extremists among them will be on the alert for suggestions by European politicians which they can turn to their own advantage. Fortunately, all the Federal Independence Party nominees have been defeated, and it was from them that illiberal statements came most freely. The Independent Group, though with more members, has some members who are prone to ill-considered comment. If they accept disciplined leadership as part of the price of their leadership, the polls the Group may quickly gain the measure of respect so severely to be wished for the sake of Kenya.



















White settlers and their families, a superior position with the African people. The British Government and the African people have both a moral and a political obligation to develop the African continent. The moral obligation is to develop the African continent for the benefit of the African people. The political obligation is to develop the African continent for the benefit of the African people.

Rehabilitation of the African people is a question of land. The Kikuyu tribes who were driven from their ancestral lands against the Government's policy of reserving the best of the most fertile land in the Highlands for European settlement and allocating other less fertile areas to particular African and European settlers have come to regard the White Highlands as a highland power base. The Government's policy of reserving the best of the most fertile land in the Highlands for European settlement and allocating other less fertile areas to particular African and European settlers has been a major factor in the development of the African people's sense of grievance against the Government's policy of reserving the best of the most fertile land in the Highlands for European settlement and allocating other less fertile areas to particular African and European settlers.

**Discriminatory Practices**

Discriminatory practices on the land have been a major factor in the development of the African people's sense of grievance against the Government's policy of reserving the best of the most fertile land in the Highlands for European settlement and allocating other less fertile areas to particular African and European settlers. The Government's policy of reserving the best of the most fertile land in the Highlands for European settlement and allocating other less fertile areas to particular African and European settlers has been a major factor in the development of the African people's sense of grievance against the Government's policy of reserving the best of the most fertile land in the Highlands for European settlement and allocating other less fertile areas to particular African and European settlers.

It is unfortunate that most of these changes were not encouraged earlier, because it can now be seen that the Mau Mau movement was a result of the Government's policy of reserving the best of the most fertile land in the Highlands for European settlement and allocating other less fertile areas to particular African and European settlers. The Government's policy of reserving the best of the most fertile land in the Highlands for European settlement and allocating other less fertile areas to particular African and European settlers has been a major factor in the development of the African people's sense of grievance against the Government's policy of reserving the best of the most fertile land in the Highlands for European settlement and allocating other less fertile areas to particular African and European settlers.

**Africanized Government**

The Mau Mau movement was a result of the Government's policy of reserving the best of the most fertile land in the Highlands for European settlement and allocating other less fertile areas to particular African and European settlers. The Government's policy of reserving the best of the most fertile land in the Highlands for European settlement and allocating other less fertile areas to particular African and European settlers has been a major factor in the development of the African people's sense of grievance against the Government's policy of reserving the best of the most fertile land in the Highlands for European settlement and allocating other less fertile areas to particular African and European settlers.

The Mau Mau movement was a result of the Government's policy of reserving the best of the most fertile land in the Highlands for European settlement and allocating other less fertile areas to particular African and European settlers. The Government's policy of reserving the best of the most fertile land in the Highlands for European settlement and allocating other less fertile areas to particular African and European settlers has been a major factor in the development of the African people's sense of grievance against the Government's policy of reserving the best of the most fertile land in the Highlands for European settlement and allocating other less fertile areas to particular African and European settlers.

The Mau Mau movement was a result of the Government's policy of reserving the best of the most fertile land in the Highlands for European settlement and allocating other less fertile areas to particular African and European settlers. The Government's policy of reserving the best of the most fertile land in the Highlands for European settlement and allocating other less fertile areas to particular African and European settlers has been a major factor in the development of the African people's sense of grievance against the Government's policy of reserving the best of the most fertile land in the Highlands for European settlement and allocating other less fertile areas to particular African and European settlers.

The Mau Mau movement was a result of the Government's policy of reserving the best of the most fertile land in the Highlands for European settlement and allocating other less fertile areas to particular African and European settlers. The Government's policy of reserving the best of the most fertile land in the Highlands for European settlement and allocating other less fertile areas to particular African and European settlers has been a major factor in the development of the African people's sense of grievance against the Government's policy of reserving the best of the most fertile land in the Highlands for European settlement and allocating other less fertile areas to particular African and European settlers.

These inevitable effects of the attitude of the African people towards the Government's policy of reserving the best of the most fertile land in the Highlands for European settlement and allocating other less fertile areas to particular African and European settlers have been a major factor in the development of the African people's sense of grievance against the Government's policy of reserving the best of the most fertile land in the Highlands for European settlement and allocating other less fertile areas to particular African and European settlers.

Rehabilitation of the African people is a question of land. The Kikuyu tribes who were driven from their ancestral lands against the Government's policy of reserving the best of the most fertile land in the Highlands for European settlement and allocating other less fertile areas to particular African and European settlers have come to regard the White Highlands as a highland power base. The Government's policy of reserving the best of the most fertile land in the Highlands for European settlement and allocating other less fertile areas to particular African and European settlers has been a major factor in the development of the African people's sense of grievance against the Government's policy of reserving the best of the most fertile land in the Highlands for European settlement and allocating other less fertile areas to particular African and European settlers.

Rehabilitation of the African people is a question of land. The Kikuyu tribes who were driven from their ancestral lands against the Government's policy of reserving the best of the most fertile land in the Highlands for European settlement and allocating other less fertile areas to particular African and European settlers have come to regard the White Highlands as a highland power base. The Government's policy of reserving the best of the most fertile land in the Highlands for European settlement and allocating other less fertile areas to particular African and European settlers has been a major factor in the development of the African people's sense of grievance against the Government's policy of reserving the best of the most fertile land in the Highlands for European settlement and allocating other less fertile areas to particular African and European settlers.

**Settler Outbursts**

Having failed to ensure the creation of a democracy, the British Government's neglect of the African people under a supposedly democratic system has led to the present situation. The Government's policy of reserving the best of the most fertile land in the Highlands for European settlement and allocating other less fertile areas to particular African and European settlers has been a major factor in the development of the African people's sense of grievance against the Government's policy of reserving the best of the most fertile land in the Highlands for European settlement and allocating other less fertile areas to particular African and European settlers.

Racial discrimination and the frustration of the African people must be eradicated. Active steps must be taken to encourage political, economic and attitudes. This will never be achieved while any community remains in a privileged position. This will need determined action. Half-measures or compromises on basic principles will aggravate the situation and make it impossible to produce a solution. Only a race against time.

The awakening of the African people is a result of the Government's policy of reserving the best of the most fertile land in the Highlands for European settlement and allocating other less fertile areas to particular African and European settlers. The Government's policy of reserving the best of the most fertile land in the Highlands for European settlement and allocating other less fertile areas to particular African and European settlers has been a major factor in the development of the African people's sense of grievance against the Government's policy of reserving the best of the most fertile land in the Highlands for European settlement and allocating other less fertile areas to particular African and European settlers.

For those who have pinned their hopes on the possible change in the attitude of European leaders and the East African community in general, there is yet another blow. The withdrawal of the European Elected Members Association in April 1956 shows that they seek to retain the status quo in the party of European and non-European representation, that they seek to increase the influence of local Europeans in the Government and to minimize direct Colonial Office influence.

Multiracial government is a result of the Government's policy of reserving the best of the most fertile land in the Highlands for European settlement and allocating other less fertile areas to particular African and European settlers. The Government's policy of reserving the best of the most fertile land in the Highlands for European settlement and allocating other less fertile areas to particular African and European settlers has been a major factor in the development of the African people's sense of grievance against the Government's policy of reserving the best of the most fertile land in the Highlands for European settlement and allocating other less fertile areas to particular African and European settlers.

Party can be of three types: a combined non-European representation of all the three main-races (as in Tanganyika), or European representation equal to the combined non-European representation, as at present in Kenya.

The objective of multi-racialism must be that its existence is dependent on the maintenance of racial groups, and as such is an impediment to the establishment of democracy.

(Concluded on page 234)









# passengers

are indeed persons when they fly SAFARI, a service where special attention is paid to individual needs and in this way for the whole family.

# are

experienced air travellers who like to discover and appreciate these fine features of SAFARI service that's why it is the most frequently recommended service operating between

# persons

There is no rush to get by SAFARI, it is a service which allows you to stop at selected localities to make your journey enjoyable and relaxing.

# when they

Any travel agent will inform you of the SAFARI advantages and the economies to be had for you travel at the lowest fares on the route when you

# fly - Safari

## TO GREAT BRITAIN

RETURN FARES TO LONDON	
N'DOLA	£205.00
LUSAKA	£207.00
BUTAWAYO	£212.00
SALISBURY	£212.00
ENTEBBE	£172.00
NAIROBI	£172.00

N'DOLA P.O. Box 94, Graham A. Rexes, N'dola, Tel. 291B

SALISBURY P.O. Box 2378, 35 Jameson Avenue, Graham A. Rexes, Salisbury, Tel. 2549 or 25369

SIMILAR LOW FARES TO BE AVAILABLE ELSEWHERE IN RHODESIA

OPERATED JOINTLY BY

# SAFARI NETWORK LTD. & HUNTING BLAIR























This train has been running  
on

**MICHELIN**  
steel-cord tyres  
for 10 years.

a great achievement entirely due to

*Steel*



**MICHELIN**  
**"METALIC"**







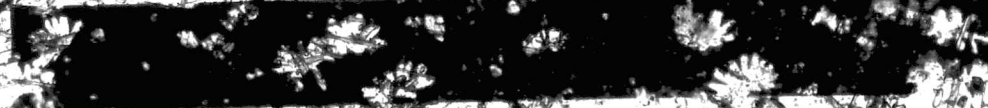
## READILY DAISE

THE daisy-like chrysanthemum flower certainly looks innocent enough, but it is the deadliest known insecticide in existence. An important branch of the main activities of the Mitchell Cotts Group of Companies is the marketing throughout the world of all exports of East African Pyrethrum on behalf of the Kenya Farmers' Association. Much of the crop is sold in the United States of America.

# MITCHELL COTTS

*Company Limited*

WINCHESTER HOUSE, OLD BROAD STREET, LONDON, E.C.



# The Kenya Question

*(Continued from page 231)*

rights, secondly, in present municipal form, Government securing a number of political based on several groups. Each group is to be based on a certain number of constituencies. Each group is to be based on a certain number of constituencies. Each group is to be based on a certain number of constituencies.

There are many who believe that democracy in Kenya is a mere slogan, a mere phrase, based on European standards and with only such people as possess certain youth educational and cultural qualifications being the only ones to participate in their own government.

Some men hold that the political status regarding the African is a mere slogan, a mere phrase, based on European standards and with only such people as possess certain youth educational and cultural qualifications being the only ones to participate in their own government.

## European Standards

The fact that the franchise is limited, common roll made it clear that the qualifications for voting would be based on European standards of education and culture. In fact, the British Government in Africa has always insisted on making the franchise based on European standards.

Some people think that the franchise is based on European standards and with only such people as possess certain youth educational and cultural qualifications being the only ones to participate in their own government.

The reasons used to justify the franchise are based on the fact that the franchise is based on European standards and with only such people as possess certain youth educational and cultural qualifications being the only ones to participate in their own government.

One of the reasons the suggested African franchise may be considered is that universal franchise may result in the election of some incompetent or self-seeking persons in positions of responsibility. This happens in Great Britain. Only through the mistakes of the African can experience. Young men are only possible to gain voting experience. A full franchise of the African is a necessary preliminary to any future development of a common roll.

## Policy of Kenya

Because of the Kenya people demanded more land and better housing, better social services and better education. The kipande system, it was called impossible. The kipande system, it was called impossible. The kipande system, it was called impossible.

The Government's policy restricts the African organization to a certain level. It requires that the African organization should be limited to a certain level. It requires that the African organization should be limited to a certain level.

The Government's policy restricts the African organization to a certain level. It requires that the African organization should be limited to a certain level. It requires that the African organization should be limited to a certain level.

implemented. It was to be accomplished only through a self-governing organization. The Government's policy restricts the African organization to a certain level. It requires that the African organization should be limited to a certain level.

## Another Southern Rhodesia

The obstacle in the way of the development of a self-governing society in Kenya is the fact that the Government will grant power to them, and the Government will grant power to them, and the Government will grant power to them.

This choice is not put forward by the British Government. It is a choice which is not put forward by the British Government. It is a choice which is not put forward by the British Government.

The Government's policy restricts the African organization to a certain level. It requires that the African organization should be limited to a certain level. It requires that the African organization should be limited to a certain level.

The Government's policy restricts the African organization to a certain level. It requires that the African organization should be limited to a certain level. It requires that the African organization should be limited to a certain level.

## Effecting the Change

A third condition for reform must be the abolition of colour discrimination. This is not just a matter of African but of all people who are discriminated against by Africans in the social life of the country.

Because of the psychological barrier of a colour question, there must be an immediate ban on further immigration. This is not just a matter of African but of all people who are discriminated against by Africans in the social life of the country.

The Government's policy restricts the African organization to a certain level. It requires that the African organization should be limited to a certain level. It requires that the African organization should be limited to a certain level.

The Government's policy restricts the African organization to a certain level. It requires that the African organization should be limited to a certain level. It requires that the African organization should be limited to a certain level.





# News Items in Brief

**A New Asian Health Centre** has been opened in Singapore. It is a joint venture of the Singapore Government and the Asian Development Bank. The centre will be used for the study and control of tropical diseases. It is situated in Mitchell Park, Singapore.

**Medical Research** has been published in the journal 'Medical Research' which is published by the International Brown University. It is a journal of medical research and is published in London by the British Red Cross Society.

**Labour Party** has been published in the journal 'Labour Party' which is published by the Labour Party. It is a journal of labour news and is published in London by the Labour Party.

**University of Kenya** has been published in the journal 'University of Kenya' which is published by the University of Kenya. It is a journal of university news and is published in Nairobi by the University of Kenya.

**Olympic Fund** has been published in the journal 'Olympic Fund' which is published by the Olympic Fund. It is a journal of Olympic news and is published in London by the Olympic Fund.

**Kenya Olympic Fund** has been published in the journal 'Kenya Olympic Fund' which is published by the Kenya Olympic Fund. It is a journal of Olympic news and is published in Nairobi by the Kenya Olympic Fund.

**Kenya Olympic Fund** has been published in the journal 'Kenya Olympic Fund' which is published by the Kenya Olympic Fund. It is a journal of Olympic news and is published in Nairobi by the Kenya Olympic Fund.

**Kenya Olympic Fund** has been published in the journal 'Kenya Olympic Fund' which is published by the Kenya Olympic Fund. It is a journal of Olympic news and is published in Nairobi by the Kenya Olympic Fund.

**Kenya Olympic Fund** has been published in the journal 'Kenya Olympic Fund' which is published by the Kenya Olympic Fund. It is a journal of Olympic news and is published in Nairobi by the Kenya Olympic Fund.

**comprehensive** - The United Kingdom's information about the East African situation has been obtained by the East African Commission and is published in the publication. It is a comprehensive report on the situation in East Africa.

**Government** - The Government has been published in the journal 'Government' which is published by the Government. It is a journal of government news and is published in London by the Government.

**Government** - The Government has been published in the journal 'Government' which is published by the Government. It is a journal of government news and is published in London by the Government.

**To all partners** in Tanganyika to destroy all aerobics which they possess has been made by the Ministry of Agriculture. It is a request for the destruction of aerobics to prevent the spread of disease.

**University of London** has been published in the journal 'University of London' which is published by the University of London. It is a journal of university news and is published in London by the University of London.

**University of London** has been published in the journal 'University of London' which is published by the University of London. It is a journal of university news and is published in London by the University of London.

**University of London** has been published in the journal 'University of London' which is published by the University of London. It is a journal of university news and is published in London by the University of London.

**University of London** has been published in the journal 'University of London' which is published by the University of London. It is a journal of university news and is published in London by the University of London.

**BELGIAN AIRMAIL LINE**  
LEOPOLD WILHELM BELGIAN COMPANY  
Belgian Congo  
United States of America  
Space for vegetables  
MARTIME INVESTIGATION  
BERP, BRUSSELS, BEIRA, MATADI  
Belgian Congo, BEIRO (Angola)

**Visiting Europe?**  
**WASLEMER HIRE EAR**  
WASLEMER HIRE EAR  
Self-drive hire cars  
WASLEMER HIRE EAR  
WASLEMER HIRE EAR





# ELECTRICAL POWER

HYDRO, THERMAL, NUCLEAR

## Reyrolle

Over 50 years specialise in the design, manufacture and installation of switchgear and control gear of every description.

## Control

Special technical assistance is available in the form of efficient rendering, maintenance, testing, packing, installation, commissioning, and repairing - anywhere.

REYROLLE & COMPANY LIMITED, 100, Abchurch Lane, London, E.C. 4, U.K.

We have installations at SALLUBU, ARNHEM, KUMBU, KEBULAWAY, SHALANG, QUE-OLE, KATOONA, KUMBU, KOTON, FILABU, NAKA, NDOLA, KIBBE, LANGSTONE, KULIRA, NKANA, AND LIMBE.  
Contact for OVEN, FALES, KAMPALA, LUGGA, TORORO, JINJA, AND KAWEMPE.

# REYROLLE

REYROLLE & COMPANY LTD.  
100, Abchurch Lane, London, E.C. 4, U.K.

ENGINEERING  
INDONESIA LTD  
Box 409  
Jaya Raya, Jakarta

REYROLLE & COMPANY LTD.  
100, Abchurch Lane, London, E.C. 4, U.K.

REYROLLE & COMPANY LIMITED, 100, Abchurch Lane, London, E.C. 4, U.K.

## Britain's Size in Rhodesia's Trade

### High Imports as Not Enough in Itself

RHODESIA'S trade with Britain was not sufficient in itself to guarantee that the country was not dependent on the rest of the world for its needs, it is clear from the figures in the Commonwealth's latest trade survey. The survey, which is published in the "Commonwealth Yearbook of Statistics," shows that in 1965, when it covered the Ninth London Conference of the Commonwealth Ministers of Agriculture, the total value of Rhodesia's exports to the rest of the world was £10,000,000.

It is estimated that the Federation, situated between the United Kingdom and the rest of the world, imports £100,000,000 worth of machinery, electrical appliances, and other goods.

The survey also shows that the population of the Federation is growing at a rate of 1.5 per cent per annum, and that the value of its exports is increasing at a rate of 1.5 per cent per annum. It is therefore essential that the Federation should continue to import machinery and electrical appliances from the rest of the world. The survey also shows that the value of the Federation's exports to the rest of the world is increasing at a rate of 1.5 per cent per annum. This is due to the fact that the Federation is producing more goods for export.

## Nairobi Climate

The climate of Nairobi is the subject of a small pamphlet issued by the East African Meteorological Department. It shows that the average temperature throughout the year varies only from 62° to 68° in the city and 60° to 66° in the suburbs. The range of temperature is very small, and the climate is very pleasant. The average rainfall is 40 inches per annum, and the humidity is high. The climate is very suitable for the growth of a wide range of crops, and it is one of the best in the world. The average temperature in Nairobi is 65° in May, 65° in June, 65° in July, 65° in August, 65° in September, 65° in October, 65° in November, and 65° in December. The average rainfall is 40 inches per annum, and the humidity is high. The climate is very suitable for the growth of a wide range of crops, and it is one of the best in the world.

What is  
your child's  
FUTURE?

Is your child healthy and prosperous? Can he help you to help by giving you a good health? Start him with VITROL, a food containing vitamins and minerals, the missing elements in your child's diet.

VITROL is a food containing vitamins and minerals, the missing elements in your child's diet. It is a food that is easy to eat and that is good for you and your child.

VITROL is a food that is easy to eat and that is good for you and your child. It is a food that is rich in vitamins and minerals, the missing elements in your child's diet.

# VITROL

VITROL is a food that is easy to eat and that is good for you and your child. It is a food that is rich in vitamins and minerals, the missing elements in your child's diet.

VITROL is a food that is easy to eat and that is good for you and your child. It is a food that is rich in vitamins and minerals, the missing elements in your child's diet.

## 7,000,000 Acres of Forestry Reserve

THE LEASE 7,000,000 ACRES OF FOREST in Southern Rhodesia should be reserved as a possible timber reserve, says Professor J. G. M. Innes, Director of the Imperial Forestry Institute, in a report submitted to the Southern Rhodesian Government. Professor Innes says that some of the huge areas of forest suitable for timber are being rapidly cleared and that he recommended that the total area of softwood forest should be increased to 7,000,000 acres. He says that the forest should be managed by the State to meet the requirements of the population of 1,000,000 Europeans and 2,000,000 Africans. The report says that the present management of land for forestry has made good progress, but it is not clear whether the State should acquire and manage the forest land.

## 1968 Harvest

THE 1968 HARVEST of palm oil in the Northern Province is estimated at 11,000 tons, says a report by the Agricultural Intelligence Unit. The report says that the harvest is estimated at 11,000 tons, which is a decrease of 1,000 tons from the 12,000 tons harvested in 1967. The report also says that the harvest is estimated at 11,000 tons, which is a decrease of 1,000 tons from the 12,000 tons harvested in 1967. The report also says that the harvest is estimated at 11,000 tons, which is a decrease of 1,000 tons from the 12,000 tons harvested in 1967.

## Palm Oil

THE NORTHERN PROVINCE Agricultural Commission now has a mass of imported West African palm oil in the village in the Northern Province. The report says that the harvest is estimated at 11,000 tons, which is a decrease of 1,000 tons from the 12,000 tons harvested in 1967. The report also says that the harvest is estimated at 11,000 tons, which is a decrease of 1,000 tons from the 12,000 tons harvested in 1967.

THE APPROACH has been made to the Government of the Federation for the building of a railway link from Bulawayo to the West Bank. The report says that the harvest is estimated at 11,000 tons, which is a decrease of 1,000 tons from the 12,000 tons harvested in 1967.

## SUBSCRIPTION FORM

To: EAST AFRICAN COMMERCE  
Great Russell Street, London, W.C.1

PLEASE SEND ME ONE YEAR AND FOUR CENTS UNPAID ORDINARY EDITION (300 per annum)

OR  
SEND ME ONE YEAR AND FOUR CENTS UNPAID FULL EDITION (300 per annum)

PLEASE PRINT NAME AND ADDRESS (Block Capitals)

Full Postage Address (Block Capitals)

Signature



**the SERVICE  
behind the SALES**



...and machine...  
...power...  
...more farmers and contractors...  
...themselves

# **GALLEY & ROBERTS LTD**

**England's leading Agricultural  
and General Engineers**

### Colico Printers' Association Report

THE COLICO PRINTERS' ASSOCIATION, Ltd., a company with a turnover of £1,000,000 for tobacco, paper, printing and printing machinery, reported a profit of £36,000 for the year ended June 30, 1954, compared with £26,000 in the previous year. The company has a net asset value of £400,000.

The company's revenue for the year ended June 30, 1954, was £1,000,000, compared with £900,000 in the previous year. The company's profit for the year ended June 30, 1954, was £36,000, compared with £26,000 in the previous year.

The issued capital of the company consists of 1,000,000 shares of £1 each. The company's revenue for the year ended June 30, 1954, was £1,000,000, compared with £900,000 in the previous year. The company's profit for the year ended June 30, 1954, was £36,000, compared with £26,000 in the previous year.

The company's revenue for the year ended June 30, 1954, was £1,000,000, compared with £900,000 in the previous year. The company's profit for the year ended June 30, 1954, was £36,000, compared with £26,000 in the previous year.

### Arrested Thirteen

SEVEN KENYAN FORESTERS, V. Jero, were arrested and handed 13 African hunters whose nets comprised a trap in a trap plot of pines near Nairobi. Jero accused the hunters and seized the two signs and the traps which they had hidden.

### Rhodesian Tobacco Sales

THE RHODESIAN TOBACCO BOARD, which has a turnover of £100,000,000, reported a profit of £1,000,000 for the year ended June 30, 1954, compared with £800,000 in the previous year. The board's revenue for the year ended June 30, 1954, was £100,000,000, compared with £90,000,000 in the previous year.

### Central Marketing Board

THE CENTRAL MARKETING BOARD, which has a turnover of £100,000,000, reported a profit of £1,000,000 for the year ended June 30, 1954, compared with £800,000 in the previous year. The board's revenue for the year ended June 30, 1954, was £100,000,000, compared with £90,000,000 in the previous year.

## THE EAST AFRICAN POWER & LIGHTING CO., LTD.

ASSOCIATED WITH TANGANYIKA ELECTRIC SUPPLY CO., LTD.  
DAR ES SALAAM & DISTRICT ELECTRIC SUPPLY COMET



1953	1952	1951	1950
11	11	11	11
11,000	11,000	11,000	11,000
24 million units	24 million units	24 million units	24 million units

THE EAST AFRICAN POWER AND LIGHTING CO., LTD.  
P.O. Box 67, Nairobi, operates at Kilindi, Mombasa, Nakuru, Mandera, Kisumu, Malindi, Lamu, and Tanga.

TANGANYIKA ELECTRIC SUPPLY CO., LTD.  
P.O. Box 16, Tanga, operates at Tanga, Pemba, and Zanzibar.

DAR ES SALAAM AND DISTRICT ELECTRIC SUPPLY CO., LTD.  
P.O. Box 236, Dar es Salaam, operates at Dar es Salaam, Dodoma, Iringa, Kilimanjaro, Lindi, Morogoro, Mtwara, Tanga, and Zanzibar.

16, Queen Street, London, E.C. 4, England



LOY STEEL

STEEL TOUN



Electric Arc Steel Making

**ROLLED PRODUCTS**

Carbon and Alloy Steel Billets, Slabs and Bars,  
Special Steels, High-Speed Steels, Rolled  
Rings and Tyres.

**FORGING**

For land and Marine purposes

**STEEL ROLLS**

For rolling Steel, Non-Ferrous Metals, Plastics  
etc.

**CASTINGS**

For use in Mines, Quarries, Cement Plants

Representative in East Africa

AFRICAN MERCANTILE CO. LTD.

Nairobi, Kenya

Representative in Rhodesia

WALDWIN (S.A.) LTD., Corner Rozenda and Bute Streets,  
Salisbury, and P.O. Box 809 Belmont, Bulawayo

PROSPECTUS OF THE AFRICAN MERCANTILE CO. LTD. SALISBURY, ENGLAND

# Of Commercial Concern

...a Salisburian, is ...  
 ...on 100 ...  
 ...the ...  
 ...

...  
 ...  
 ...  
 ...

...  
 ...  
 ...  
 ...

...  
 ...  
 ...  
 ...

...  
 ...  
 ...  
 ...

...  
 ...  
 ...  
 ...

...  
 ...  
 ...  
 ...

...  
 ...  
 ...  
 ...

...  
 ...  
 ...  
 ...

...  
 ...  
 ...  
 ...

...  
 ...  
 ...  
 ...

...  
 ...  
 ...  
 ...

...  
 ...  
 ...  
 ...

...  
 ...  
 ...  
 ...

...  
 ...  
 ...  
 ...

...  
 ...  
 ...  
 ...

...  
 ...  
 ...  
 ...

...  
 ...  
 ...  
 ...

...  
 ...  
 ...  
 ...

...  
 ...  
 ...  
 ...

...  
 ...  
 ...  
 ...

...  
 ...  
 ...  
 ...

...  
 ...  
 ...  
 ...

...  
 ...  
 ...  
 ...

...  
 ...  
 ...  
 ...

...  
 ...  
 ...  
 ...

...  
 ...  
 ...  
 ...

...  
 ...  
 ...  
 ...

...  
 ...  
 ...  
 ...

...  
 ...  
 ...  
 ...

...  
 ...  
 ...  
 ...

...  
 ...  
 ...  
 ...

...  
 ...  
 ...  
 ...

...  
 ...  
 ...  
 ...

...  
 ...  
 ...  
 ...

...  
 ...  
 ...  
 ...

...  
 ...  
 ...  
 ...

...  
 ...  
 ...  
 ...

...  
 ...  
 ...  
 ...

...  
 ...  
 ...  
 ...

...  
 ...  
 ...  
 ...

...  
 ...  
 ...  
 ...

...  
 ...  
 ...  
 ...

...  
 ...  
 ...  
 ...

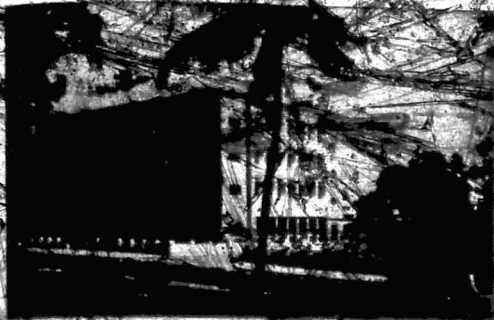


**MANICA TRADING COMPANY**

STEAMSHIP, AIRWAYS,  
 SHIPPING, FORWARDING  
 AND INSURANCE AGENTS

LONDON OFFICE: 11, 12, 13, 14, 15, 16, 17, 18, 19, 20, 21, 22, 23, 24, 25, 26, 27, 28, 29, 30, 31, 32, 33, 34, 35, 36, 37, 38, 39, 40, 41, 42, 43, 44, 45, 46, 47, 48, 49, 50, 51, 52, 53, 54, 55, 56, 57, 58, 59, 60, 61, 62, 63, 64, 65, 66, 67, 68, 69, 70, 71, 72, 73, 74, 75, 76, 77, 78, 79, 80, 81, 82, 83, 84, 85, 86, 87, 88, 89, 90, 91, 92, 93, 94, 95, 96, 97, 98, 99, 100





The Offices of the Company's East African Headquarters at Nairobi

Branches

Nairobi, Kampala, Kisumu, Dar-es-Salaam, Mombasa, Malindi, Mwanza, Mbaraka, Mbale, Lindiba, Arusha

Imports of all classes of merchandise including building materials, hardware, furniture, office goods, and sports etc.

Steamship Agents

The African Mercantile Co., Ltd.  
Swindon, Wiltshire, England  
London, E.C.4

## East Africa

Are you Seeking Profitable Investment Opportunities in East Africa?

If so, you should consider

### East Africa

Kenya, Tanzania, Uganda, Malawi, Zambia

There are many opportunities in these rapidly developing countries

For information regarding

- ★ Imports, Exports, Consignments
- ★ Freight, Settlement, Finance
- ★ Investments, Leases
- ★ General Conditions

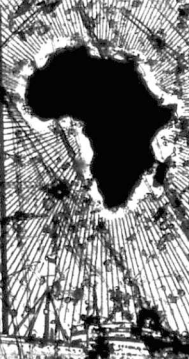
THE COMMISSIONERS  
EAST AFRICAN OFFICE, GRAND BUILDINGS  
TRIALGAR SQUARE, LONDON, W.C.2

Telephone: WILKINSON 5701-2, 5938-3  
Telegrams: EASTAFRI, EASTAFRI, London  
Cables: EASTAFRI, London

# To South and East Africa

**WEEKLY MAIL SERVICE**  
to CAPE TOWN, PORT-ELIZABETH  
DURBAN, EAST LONDON and DURBAN

Swindon Castle	Oct 25
Princes Castle	Nov 1
St. George's Castle	Nov 8
St. Anne's Castle	Nov 15
Chessexton Castle	Nov 22
Edinburgh Castle	Nov 29
Windsor Castle	Dec 6
Metropoli Castle	Dec 13
St. George's Castle	Dec 20
St. David's Castle	Dec 27



**INTERMEDIATE AND ROUND AFRICA SERVICES**  
from LONDON and CONTINENT

Bremen Castle	Oct 29
Wardour Castle	Nov 14
Durham Castle	Nov 21
Kenilworth Castle	Nov 28
Rhodesia Castle	Dec 5

Out East Coast home West Coast  
Out West Coast home East Coast

# UNION CASTLE LINE

Office: 3 FENCHURCH STREET, LONDON, E.C.3  
Office in: Southampton, Birmingham, Leeds, Manchester, Glasgow  
All sailings subject to alteration without notice.





**Electrical Equipment**



First List **SMITH MACKENZIE & CO. LTD.**

P.O. Box 290, Nairobi, and throughout East Africa

Agents for:

Legg Industries Ltd., Murex Welding Processes Ltd., Oldham & Son Ltd.

Batteries • Charging Equipment • Arc Welding Equipment

**BENGUELA RAILWAY**

The link to  
the Atlantic  
for Central  
African trade  
via Lobito

Travellers' route to  
Zaire and Northern Rhodesia

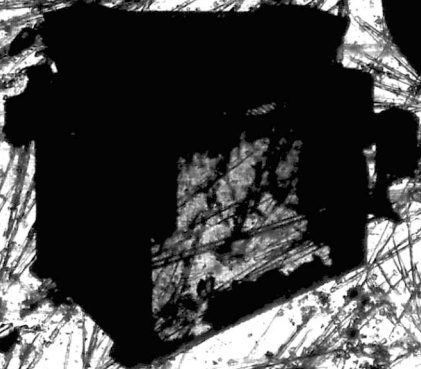
200 million tons

**BENGUELA RAILWAY COMPANY**

Particulars apply to **PRINCE HOUSE, 25, GREENWICH STREET, LONDON, E.C.**

TELL OUR ADVERTISERS YOU SAW THEM IN EASY ADVERTISING

# Modernisation of Ginning



**PLATE ALL-GEARED  
DOUBLE ROLLER GIN**

Designed to gin all types of cotton  
varieties with "woolly" fibres

Output: Has a net output of 90-110% per hour  
LAST BELLEVER: The machine passes arranged for  
to collect the ginned cotton from both rollers to be collected  
from the outside of the machine, as desired.

HEAVY DUTY: All main operating parts are fitted with  
at least 100% extra capacity.

ROVERS: Either 10 lbs. or 12 lbs. as required.  
examined, for the purpose of ensuring

ADJUSTABLE: Easy to adjust to the ginning line  
of the plant or to the ginning line.

Full details of this machine or descriptive literature  
covering the complete range of plate cotton ginning  
machines is readily available on request.

W. & A. G. (Sales) Ltd. and The Uganda Co. (Cotton) Ltd.  
will be glad to assist in ginning their ginning  
machines with specifications and details of the ginning machine  
The Cotton Machine Co. 1952

**THE UGANDA  
CO. (COTTON) LTD**  
P.O. BOX 1  
**KAMPALA UGANDA**

## *expanding economy*

The Corporation aims at the encouragement of industry and  
agriculture in Uganda.

With its issued capital of over five million pounds, it offers a service  
to industrialists and others who are interested in the many possibilities  
offered in this rapidly developing country.

Information on all aspects of the commercial life of Uganda can be  
provided and particular technical points investigated by the Corporation's  
Research Division.

Consideration will be given to the provision of capital where such  
assistance is desired.

**UGANDA DEVELOPMENT CORPORATION LIMITED**  
P.O. Box 42  
Kampala  
21 Regent Street,  
London, S.W.1