

EAST AFRICA

THE ONLY NEWSPAPER IN EUROPE DEVOTED
EXCLUSIVELY TO THE INTERESTS OF
THOSE TRADING, TRAVELLING, HOPEING,
PROPERTY OR OTHERWISE INTERESTED IN
EAST AND CENTRAL AFRICA
A WEEKLY JOURNAL



Vol. 5, No. 250
Registered at the G. Post Office as a Newspaper

THURSDAY, JULY 1, 1904

Subscription 1/6 per Annum
One Shilling



BRITISH INDIA LINE

REGULAR SERVICE LONDON AND MARSEILLES TO AND FROM EAST AFRICA
Directly via Suez and Port Sudan, carrying first and second class
passengers.

FAST MAIL AND PASSENGER SERVICE BOMBAY - KILINDINI - DURBAN
Directly via East African Coastal Ports, also calling at Seychelles, Zanzibar, etc.

EAST AFRICAN LOCAL SERVICES BY "DUMRA" AND "DWARKA"
Connecting with other services and providing frequent facilities at smaller ports
served by the Company's local mail services.

For full details and rates apply to the Agents

Passage Agents: **COCKSPUR STREET, S.W. 1.**
CO. 122, LEADENHALL ST., E.C. 3.
Freight Agents: **CO. LTD. DOCK HOUSE, MILLER ST., E.C. 4.**

Schweppe's DRY GINGER ALE SODA WATER TONIC WATER GINGER BEER ETC.

The celebrated waters are
available all over the world
at all the best hotels
clubs and stores through the
world.
In any part of the
world sent upon application to
Schweppe's Ltd.
Marble Arch House, London, W.



TAILORING,
EQUIPMENT,
KIT,

INSURANCES
OF ALL KINDS

SPORT
EQUIPMENT

RE-PURCHASE TERMS

MOTORCARS COLLECTED
DAMAGED AND SHIPPED

BARBAGE STORES
AND SHEDS

GENERAL
AGENTS

MANUFACTURERS
AND EXPORTERS

COYS. REPAIRED
AND REFINISHED

SPECIAL FACILITIES FOR PAYMENTS
TAXIDERMISTS IN ALL ITS BRANCHES

GRIFFITHS, McALISTER & CO.

25 & 27, MARSHALL LANE AND 11 & 12, MARK LANE
LIVERPOOL LONDON

SPECIAL EAST AFRICA DINNER NUMBER

Royal Mail and Intermediate Services to
SOUTH & EAST AFRICA

REGULAR SERVICE TO EAST AFRICA
Via Mediterranean Ports
and Suez Canal

For rates, times and
other particulars
apply to the

Union-Castle Lines

**HOLIDAY
TOURS
TO THE
IONIAN OR
DORIAN ISLANDS**
LONDON TO
ANTWERP

Special Christmas
TOURS TO SOUTH AFRICA
at reduced holiday rates

Head Office: 5, Fenchurch Street, London
West End Agency: 122, Pall Mall

Branch Offices at Southampton, Birmingham, Liverpool, London, Manchester, Newcastle, and
Paris, Edinburgh, Glasgow, Lyons, Marseilles, Rotterdam, and other ports.

Telegram
Drawn: Cent. London

Telephone

MARSHALL & CO
8, ST. ANDREW'S HILL
St. Paul's, E.C. 4

Wholesale and Export Paper Agents
and Merchants

Every description of Writings, Printings, Boards
and Tinted Papers

EAST AFRICA



A perfect situation with every conceivable convenience and comfort.

HOTEL CECIL

LONDON

Over **40** years
tyre building experience
is behind every

DUNLOP

tyre you buy

DUNLOP quality is built on this unparalleled experience. And today, Dunlop research ensures constant progress. Every possible improvement is embodied in Dunlop Tyres.

Make them your choice always.

DUNLOP TYRE & RUBBER CO. LTD.

MANCHESTER, ENGLAND

SOLE AGENTS FOR THE WORLD

HERE'S A DUNLOP ACCESSORY FOR EVERY NEED

Tell our advertisers you saw it in "East Africa"

THE KENYA and UGANDA RAILWAYS AND HARBOURS



Shipping alongside the East
Africa Railway at Mombasa



Dining Car



Steamship at
Lake Victoria

For further information apply to
The Eastern Africa Dependencies Trade and Information Office, Royal Mail
Building, Cannon Street, London E.C. 6, the General Manager, Kenya and Uganda
Railways and Harbours, Postoffice Buildings, Nairobi, Kenya.

AFRICA

CUBA

PERU

NIGERIA

RUSSIA

GREECE

BOEN

HONG

SPAIN

ITALY

Tested and Approved by World Wide Service

Spitzbergen drove the
 Arctic Circle to a market
 before the tropics of Capri, and
 in the course of the world
 the first time. In the course of more
 than 50 years, it has been produced by no other
 machine in the world. It is the only
 machine in the world of its kind, successfully
 tested in every climate for large production
 work. It is a most successful demonstration
 of the power of the world.

BUCCYRUS ERIE Co. LTD.
 LONDON, ENGLAND

BUCCYRUS ERIE

MANCHURIA

AUSTRALIA

EGYPT

JAPAN

NEW ZEALAND

ENGLAND

INDIA

ALGERIA

SIAM

FRASER & NEAVE, SOUTH AFRICA, LTD.

The most dependable tools are those that are advertised

Our Settlement Number

CONTAINS 208 pages, printed on art paper, 80 photographic illustrations and a snap, and authoritative articles on almost every conceivable aspect of European activity in East and Central Africa. Price post free in the U.K. 3/9; Overseas, 4/11.

An annual Subscription to *East Africa* costs only 30/- post free. Use the form on the inside of the back cover and write to-day.

JOHN BOYES'S BOOK

"The Company of Adventurers" is splendid reading.

East Africa, 91, Great Titchfield Square, London, W.1 will send a copy by registered post to any address in the world on receipt of 4/7.

Eastern Africa To-day

You wish to know more about it. Everyone does, for knowledge increases your earning capacity and your pleasure.

East Africa To-day, a 20 page book "Eastern Africa To-day" will be sent post free to any address on receipt of 6/-.

PARKER PRODUCER GAS PLANTS
FOR
MOTOR TRANSPORT and TRACTOR WORK
(BRITISH MADE THROUGHOUT)

FORDSON TRACTOR PLANTS
WITH
PARKER CYLINDER HEADS
(Provisionally Protected)

LOSS IN POWER ENTIRELY OBTIATED

COMMON CHARCOAL FUEL
BURNING COSTS ENORMOUSLY REDUCED

PRODUCER
GAS
PLANTS



CYLINDER
HEADS

PARKER CYLINDER HEADS ENSURE THAT POWER EQUALLING THAT OBTAIN BY PARKER GAS WILL BE OBTAINED UNDER PRODUCER GAS. NO OTHER SYSTEM WILL EVEN APPROACH THESE RESULTS.

PLANT COMPARISONS

Hours per day in a FORDSON TRACTOR for the same work will vary according to the type of fuel used. On a 1000 lb. tank of fuel a Parker Producer Gas Plant will run for 12 hours, a Fordson for 6 hours.

WHOLLY TESTED AND OPERATED BY AN EXPERT. EXPERT KNOWLEDGE IS NOT SECURED BY HIGHLY EFFICIENT BURNING SWEETLY RUNNING.

PARKER PRODUCER GAS PLANTS

63, Conduit Street, London, W.1.

Cables: Parprogas, Londdu. Telephone: Regent 0300 or 1122

"WINGET" FOR ALL CONCRETE MACHINERY

"WINGET" OPEN DRUM MIXER
7 1/2 Type with 4 H.P. Engine



Same capacity machine also supplied without elevating Hopper and 12 H.P. Engine

The "Winget" Open Drum Mixer is the Fastest and Most Efficient Mixer on the market.

Also supplied in 14, 10, 12, 10, and 5 1/2 ft. batch capacities.

"WINGET" STONE CRUSHERS,
BLOCK BREAKERS AND GRANULATORS

are supplied in the most powerful and economical way, ensuring long life and a high quality good output.

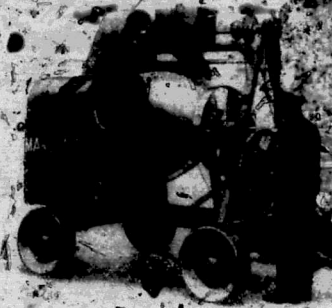


The "Winget" Tumble Drum Crusher is designed and manufactured in accordance with the highest standards. It is supplied as a complete unit, as depicted with a special tool, as preventive maintenance and for simple repairs, or as a spare part, with or without any other part and is completely complete.

WINGET LIMITED



MARSHALL Concrete Mixers.



EIGHT SUPERB MODELS are available to meet your needs.

Built to the characteristic design and finish which identifies all "Marshall" machinery, the Mixers are notable for their large output capacity, convenience of operation, and reliability.

NOW USED BY MANY LEADING CONTRACTORS AND PUBLIC WORKS ENGINEERS.

Full Coloured Price Lists on request.

MARSHALL SONS & COMPANY LTD.
Engineers, CHINEE BURGHE, England
London, 27, Abchurch Lane, London, E.C. 4,
and 44, New Street, Birmingham.

ESANOFELE

THE SURE CURE FOR MALARIA



Through out the tropics Esanofele has proved itself during the past ten years to be the best remedy for malaria. It is both prophylactic and a cure. East African doctors recommend and prescribe Esanofele, which is obtainable from any chemist.

Sole Distributors for East Africa

A. H. WARDLE & CO. LTD.
NAIROBI, MOMBASA AND ELDORET.

RELIABLE LAND BOOTS

SPECIALLY DESIGNED FOR PLANTERS & FARM WORKERS
BRITISH MADE THROUGHOUT

These Boots are made from the best leather, specially produced for wet resistance and hard wear. The uppers are super water proof, dull "Schmid" calf leather with special leather linings. Triple solid sole with 100% rubber. Built for reliability and guaranteed lasting.



BLACK or BROWN

Men's Sizes 6, 7, 8, 9, 10, 11

23/11 PER PAIR
Part Postage 1/6

RB15A BLACK

RB15A BROWN

Duty 1/6

State Number, Colour and Size.

SEND CASH WITH ORDER We supply on credit, but charge payable, and you can have Part sent on Delivery. Value Payable by Post (C.O.D.) or by Cheque and Post Office where this system is in operation.

OR SEND 5/- DEPOSIT, which will be deducted from charge payable, and you can have Part sent on Delivery. Value Payable by Post (C.O.D.) or by Cheque and Post Office where this system is in operation.

Write for our full size General Catalogue of Boots and Household Goods at Wholesale Prices. Catalogue sent free on post free.

J. D. WILLIAMS & CO. LTD.
THE DALE STREET WAREHOUSE
MANCHESTER, ENGLAND

THE SUDAN A Perfect Winter Resort

Khartoum, at 1,200 feet above sea level, enjoys a fine winter climate. Comfortable sunshine, temperatures moderating between 60° as a minimum and 80° as a maximum in season of health and pleasure.



KHARTOUM is a modern town with handsome buildings and gardens along the banks of the Blue Nile. The Grand Hotel is under the management of the Railways and Steamers Dept. **GHEDDEWAH**, the wonderful African Metropolis, is situated west of Khartoum, 100 miles of railway. It is a fine place for stretching for seven miles along the shore of the Nile river. Nearly every day an aviation party is seen flying over the desert plain. The Sudan is one of the most easily accessible countries in which Big Game and its large varieties offers a most varied choice of sports and adventures.

BIG GAME SHOOTING - The Sudan is one of the most easily accessible countries in which Big Game and its large varieties offers a most varied choice of sports and adventures.

Traffic Department
Sudan Government Railways and Steamers
Khartoum, Khedivial, BUCKLEHAM GATE, LONDON, S.W. 1

East Africa, July 7, 1929.

EAST AFRICA

THE ONLY NEWSPAPER IN EUROPE DEVOTED
EXCLUSIVELY TO THE INTERESTS OF
THOSE LIVING, TRADING AND
PROFITING OTHERWISE INTERESTED IN
EAST AND CENTRAL AFRICA
A WEEKLY JOURNAL

Vol. 5, No. 250.

THURSDAY, JULY 25, 1929.
Registered at G. O. as a Newspaper.

Annual Subscription 30/- per Annum
Direct Selling



H.R.H. The Prince of Wales

who was the Guest of Honour of the

East Africa Dinner Club

on Thursday, June 27

EAST AFRICA

From British Planters

In British Ships to British Shores

for the British Public

*In British Central Africa British Planters are growing
Tea, Coffee, and Tobacco for the Homeland Market*

Support them by

SMOKING

Nyasaland Cigarettes, made
from the finest growths of
Nyasaland Tobacco.
 Packets of 20 10c
 Packets of 50 25c
 Boxes of 100 50c

Blantasia Smoking Mixture,
blended from the finest growths
of Nyasaland tobacco. Ensuring
a cool and fragrant smoke.
 2 oz. packets 10d.
 7 oz. tin (airtight) 3/4

DRINKING

J. S. Nyasaland Tea at 2/3 per lb.
(Broken Orange Pekoe)
 J. S. Nyasaland Coffee at 2/3 per lb.
(Roasted and ground ready for use
in 2 1/2 cups)

*Any enterprising Grocer or
Tobacconist will supply you with
the above Nyasaland products*

A. J. STOREY, NYASALAND.

London Office
Aldgate Square, E.C. 3.

Telephone
AVENUE 778

Telegram
Storeybian, Aldgate, London

KENYA COFFEE

INSIST ON YOUR
GROCEER STOCKING IT

FOR FURTHER PARTICULARS OF FOR
SALVATION WITH REGARD TO
PLANTING AND PLANTING APPLY TO
THE COFFEE PLANTERS UNION OF
KENYA & EAST AFRICA P.O. Box 381.
NAIROBI, KENYA COLONY.

DRINK
KENYA
COFFEE

BY APPOINTMENT TO H.M. THE KING

CHAMPAGNE OF ENGLAND

Gaymer's CYDER

THE production of Cyder of pronounced Champagne type, choice bouquet, brilliant sparkling condition and regular quality is considered by experts to be even more difficult, and to necessitate more careful control, than the manufacture of most grades of grape wines. In England, especially, the making of this grade of Cyders now constitutes an important industry, rivalling the European wine trade.

The Medicinal attributes of Gaymer's Cyders are well known. Like Champagne, GAYMER'S CYDER contains powerfully stimulating and fragrant ethers in large quantities, is particularly rich in vitamins and renders the free phosphorus of the apple available in its most easily assimilated form—an important item of interest to sedentary workers and professional men generally. It is a blood purifier and an anti-scorbutic and is frequently recommended as likely to be of benefit in cases of Catarrh, Rheumatism, Stone, Gravel, Diabetes, Scurvy, Constipation and Dyspepsia.

SEVERAL BRANDS OF MATURED EXPORT CYDER

<p>Gaymer's Cyder is made from the finest apples grown in the English Cotswolds.</p>	<p>It is a brilliant sparkling Cyder, rich in vitamins, and is medically recommended as being of great benefit in many cases.</p>	<p>It is a brilliant sparkling Cyder, rich in vitamins, and is medically recommended as being of great benefit in many cases.</p>
--	---	---

Representatives for Kenya Colony, Tanganyika, Uganda and Zanzibar
THE KENYA AGENCY, Ltd., P.O. Box 781, United Building, NAIROBI

W.M. GAYMER & SON, LTD.

ESTABLISHED MORE THAN A CENTURY
ATTLEBOROUGH, NORFOLK, ENGLAND

Gaymer's was the Cyder
served for H.M. King's world
with H.R.H. The Prince
of Wales and for the
House of H.M.
Repulse

GLAGETT, BRACHI & Co.,

LTD.

**COLONIAL LEAF
TOBACCO SPECIALISTS**

INVITE CORRESPONDENCE.

Manchester Branch

**117 CHAPEL STREET
SALFORD.**

TEL. CITY 5151

Head Office

**61 DRURY LANE, LONDON,
E.C. 3.**

TEL. NO.

THE DAWSON NEWS SERVICE

Annual Subscription Rates, including Foreign Postage.

BRITISH

	Gratis	Illustrated, Sporting and Dramatic News	£3.8 10
Little Red Book			
Times Weekly	5 0		
Punch	16 6	Pearson's Magazine	0 15 0
Autocar	16 6	Times Express	0 13 0
Pearson's Weekly	0 13 3	Army, Navy and Air Force Gazette	1 10 4
Sphere	5 9	Motor	1 15 6
Patrol	8 11 9	Yacht or Magazine	0 15 0
Engineering	5 3 0	News of the World	0 13 0
Summit	0 13 6	Manchester Guardian Weekly	0 13 0

AMERICAN

Ladies Home Journal	£0 11 6	Literary Digest	£1 9 0
Life	7 0	Collier's Weekly	0 17 0
Motion Picture Magazine	0 16 0	Good Housekeeping	0 17 0
Parade Magazine	1 5 0	Scribner's Magazine	1 1 0
Play Magazine	0 18 0	Popular Reading	0 14 0
Saturday American	1 2 0	Modern Priscilla	0 11 0
Century Magazine	1 4 0	Outlook	1 10 0
Cosmopolitan	0 17 0	Atlantic Monthly	1 3 0
North American Review	1 5 0	Picture Play Magazine	0 15 6

FRENCH

Genie	£2 12 0	Miroir des Modes	£0 12 0
La Vie Française	1 10 0	Le Matin	2 2 0
Revue des deux Mondes	1 10 0	Chiffons	1 3 0
Les Annales Politiques	0 19 0	Miroir des Sports	0 15 0
Le Figaro	1 2 0	Monde Illustré	1 13 0
Le Sourire	1 2 0	Jeune Chic	0 17 0
Le Siro	0 15 0	Journal des Débats	0 17 0
Économiste Français	1 9 0	Journal Amusant	1 0 0

Not a mutilated paper, in France postage

ABOVE RATES INCLUDE ALL DOUBLE NUMBERS.

WM. DAWSON & SONS, LTD

CANNON HOUSE, PILGRIM STREET, LUDGATE, CIRCUS

LONDON, ENGLAND.

ESTABLISHED

One of East Africa's Beauty Spots.

At Abezezi the traveller has the choice of saving a day on the trip, or of visiting one of the beauty spots of East Africa. The run to Tukuyu is about forty miles, up and down such precipitous fides that all superfluous weight is discarded before attempting the harness of one in four, hairpin bends at the foot of each climb, and the bad surface of the road in the gorges all yours up to the afternoon. But the view from the top of the High Pass will alone repay you. From here you can see over the Livingstone Range and the wooded Rungu Mountains, and on a clear day as far as Lake Tanganyika far beyond the whole route vies with any highland scenery in the world, and the road is lined with a carpet of wild flowers.

At Tukuyu itself is the great garden laid out by the administration after the War. It covers many acres and is famed for its roses, as well as many other flowers. It has also experimental patches of rice, maize, coffee, beans and possible products of the hillsides. Here a botanist would be happy for weeks, and in the hills around there are wild tulips and other beautiful flowers. With the lake, only four miles away, the view seems to have been catered for by nature, and it is well worth a visit. The approach, however, has become one of the leading health resorts of Africa.

From the top of the road runs through a stiflingly hot wilderness of an encircling by hills, and it is a relief to scale the Mbozi Rise, from the summit of which you have an ever most extensive view of the plains. The hills are packed away in this district are some good coffee estates. From the road, you see only one big coffee plantation and numerous small ones which point to a considerable population. In this thickly wooded country fresh rhino tracks are frequent, and elephant may bar your progress round any corner.

Entering Northern Rhodesia.

Crossing the border into Northern Rhodesia is marked only by a signpost. Customs formalities being abandoned to at Abezezi in Tanganyika, whilst Northern Rhodesia leaves the contrabandist free until he reaches Abercorn, the administrative centre for a very large area. A new road has recently been completed which cuts out the detour to Abercorn, and many travellers still visit this most hospitable Scotch town, which is closely connected with, and indeed built down pike-point to the Blantyre Mission, which turns out the best of the numerous excellent native artisans in this part of East Africa like the place of the Indian and haphazard Indian towns of Kenya. They also fill the other posts monopolized in Kenya and Tanganyika by Indians, helping to provide stores, acting as clerks in charge of post offices, and filling many official positions in the Government offices.

In Northern Rhodesia, as far as Broken Hill the Great North Road shows little variation. It winds its way through endless forests of small trees, a wide, shifting ribbon visible frequently for miles ahead, some time hidden by the rain, sometimes more excellent for a long part, although the heavy motor transport now using it in the rains is rapidly bogging down. Sometimes the woods are cutous by a stream, and sometimes new miles further on a wide, open plain the brightness of midwinter, spreading through the blue haze of the smoke of the forest, sometimes in the hills with lilac hills.

Abercorn is a local administrative centre, with a post office, police station, and building, beyond a stone bridge which consists entirely of Government offices and the offices of the officials. It is

very isolated and petrol, when it is available, costs 5s. a gallon. The ore breaks in the monotony is the advent of the Tanganyika lake steamer. But Abercorn radiates hospitality, and the little coffee-planting settlement which is growing up towards the Lake should be a great success, if friendliness and content count for anything.

Rich Coffee Land.

Coffee is abundant, and as many as thirty lions have been hunted down with a pack of dogs on our farm alone. Rhino, and many varieties of buck can be found in the neighbourhood, and sportsmen with a bag from a range on the Lake prize a thrill enough for any sportsman. The lake is twenty-seven miles from Abercorn, and the road drops the 3,000 ft. to the coffee exceptly through rich coffee land, abundantly watered by mountain streams from the hills in the background. They nestle Lake Tanganyika. It is a tract of land with islands forming sheltered bays, a shepherd's paradise offering a good range of fish.

The roads from here to Kasere and on to the Chambizi meet most real pleasure and the rough going from Abezezi, and the astonishingly well built villages of the Aweemba are a noticeable feature. Swarms of women and children and the few men not away working salute you as you pass with the rather surprising greeting of a genuflection and hand-clapping. The genuflection may become an attitude of prayer if you stop and speak to them, and an unexpected present will often find you falling on the ground at your feet, a most disconcerting proceeding.

As again these primitive customs, the villages are immeasurably better than those of the advanced coastal Swahilis of Kenya and Tanganyika, who are usually content with mud-brick huts and not too tidy compounds. These Aweemba villages are scrupulously clean, and the influence of the administrative officers is to be seen in the straight lines in which they are so neatly built and in the attention paid to village sanitation. The huts are circular, with the roofs of thickly thatched roofs supported on posts, and a narrow veranda around the hut. The walls are white washed with mud, and the clay found in the neighbourhood. Even inside the huts, the floors are so clean that one could sit on them with ease. In the open places within the compounds are supported great



BROKEN HILL, M.

THE
African Marine and General
Engineering Company, Ltd.

KILINDINI.

Ship Repairing. Sail Making and
Repairing. Moulding.

OXY ACETYLENE WELDING
and CUTTING.

In their well-equipped Carpenters Shops, all types of
House and Office Furniture are made and repaired.

Estates requiring repairs to machinery, implements, etc.,
are invited to communicate.

ESTIMATES GIVEN.

Telephone 36.

Telegrams: "African" Mombasa.

SMITH, MACKENZIE & CO.

General Managers

The old country no longer 6,000 miles away

The McMichael Screened Dimic Three... get into closest touch with the Old Country... It bridges the distance not only to the Continent, and England and the Continent, but also brings in many other long distance stations...

The McMICHAEL SCREENED DIMIC THREE

Wave lengths covered include 18,000 metres, 300,000 metres, and 850,000 metres... see set is easily portable for its use in the open air...

The identical equipment used in the Works made famous recently for the home construction... The McMichael Home Constructor's Screened Dimic Three gives best results of all exactly to instructions... Full leaflets and diagrams are sent on application.

Full particulars and prices of the screening equipment may be obtained by direct communication with L.M. MICHAEL LTD. Manufacturers of Wireless and Scientific Apparatus. SLOUGH, BUCKS, ENGLAND.



READ THIS

Dear Sir, I have had the pleasure of receiving your letter of the 27th inst. regarding the McMichael Screened Dimic Three... I am particularly pleased with it as it does nothing about wireless... I have added nothing to the set... I am particularly pleased with it as it does nothing about wireless... I have added nothing to the set... I am particularly pleased with it as it does nothing about wireless...

A. H. WARDLE & CO., LTD.

Kenya's Oldest Wholesale and Retail Chemists. P.O. Box 103, NAIROBI, KENYA COLONY. Branches: MOMBASA and ELDORET.

By Special Appointment to H.R.H. THE DUKE OF YORK and H.R.H. THE DUKE OF CONNAUGHT. SPECIALISTS IN MEDICAL OUTFITS FOR SAFARI PARTIES AND EXPERTS IN PHOTOGRAPHIC WORK OF ALL KINDS. OUR PHOTOGRAPHIC EQUIPMENT IS THE MOST UP TO DATE IN EAST AFRICA.

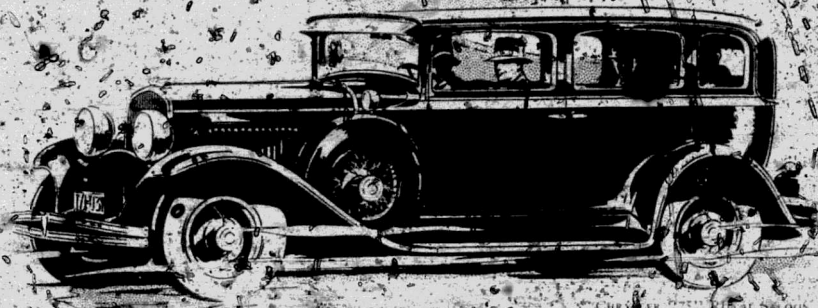
The Company is pleased to announce that it has secured the sole rights of reproduction and selling photographic and enlarging plates of the work of the late Mr. and Mrs. H. A. Johnson taken in Mr. & Mrs. H. A. Johnson's photographic work in the mountains of Mt. Kilimanjaro, Kenya.

- Messrs. WARDLE are the Sole East African Agents for: Oilingworth Photographic Materials, Eschscholtz Malaria Tablets, Carter's Little Liver Pills, Potter & Moore's Mixture, Lander Water, Sordac Tooth Paste, Borden's Malted Milk, Owen's Tonic, United Milk Company, Rolls Razor.

A. H. WARDLE & CO., LTD.

Agricultural and Photographic Chemists. NAIROBI. MOMBASA. ELDORET.

CHRYSLER MOTORS
PRODUCT



CHRYSLER MOTOR CARS

It costs much more to equal CHRYSLER performance in any other car

Chrysler engineers from the outset established the most modern principles and fundamentals of engineering and applied them in a new way.

They have done this Chrysler plan, and the achievement of the plan that an

entirely new standard of performance has been brought into being.

The extraordinary acceleration, smooth speed, ease of handling and control, compactness, comfort, durability, and low life have all been combined in a machine the fine qualities of performance can only be approached by other cars costing much more.

RHODESIA MOTORS, Ltd.

Box 584 Salisbury

RHODESIA

CARR, LAWSON & Co.

Nairobi

KENYA COLONY

Wholesale and Retail Dealers for Chrysler Cars, Trucks and Light Cars

Cables
GILLIAT LONDON

Telephone
AVENUE 9616-9617

Codes
BENTLEY'S BROOMHALL'S LIEBER'S
Agents Edition WESTERN UNION
S & M MERCHANTS

JOHN K. GILLIAT & CO. Ltd.

7, CROSEY SQUARE,
LONDON, E.C.3.

CONSIGNMENTS OF
COFFEE COTTON TOBACCO
IVORY TEA RUBBER CASAL
AND PRODUCE OF ALL KINDS
ADVANCED AGAINST AND MARKED

MACHINERY PLANTATION REQUISITES
AND GOODS OF EVERY DESCRIPTION
PURCHASED AND SHIPPED ON COMMISSION TERMS

PASSENGER DEPARTMENT
PASSAGES ARRANGED BY ANY ROUTE
AGENTS FOR THE KENYA AND UGANDA RAILWAYS

AGENTS IN EAST AFRICA

Kenya
W. MILLIGAN & CO., NAIROBI

UGANDA
HENRY SANDERSON

Messini, Aden, Zanzibar
W. MILLIGAN & CO., MOMBASA

Kenya District
K. AVELLIS, PORT MOUNT

THE USE AND ABUSE OF KENYA COFFEE

What the Coffee Planters Union is Doing.

Specially written for East Africa

By Major Charles Unitskell,

Secretary of the Coffee Planters Union of Kenya and East Africa.

It is notorious that a shocking number of children are badly shod and that a doctor's children are usually in a chronic state of colds and coughs. It is equally well known to those connected with the trade that it is usually difficult to get a suitable cup of coffee in those countries in which coffee is grown.

This was brought home to me by a visit some few years ago when I was accosted in one of our principal streets in Nairobi by a perfect stranger with the words "Say, you are the only one who knows all about your coffee, aren't you?" and "I know that there might be just a few minor points, but with my knowledge, had not yet reached maturity," he continued. "I've just come all the way from the United States, and all the trip has been looking forward to tasting your coffee." I arrived at Mombasa yesterday and had some of it yesterday, today and to-day I tasted it in the Railway Refreshment-rooms; it was worse than I have just had in the States—it was—

Countering American Criticisms

It is a pity that the arm and dagger-bearing office, where my learned staff brew and imbibe coffee from 8.30 a.m. till after 4 p.m. As frequently happens, I had a few recently roasted and ground samples of coffees from various districts of the Colony. As I sat down and tried each in turn, and conversation became more genial, I found the only visitor was interested in a large rural export business in the United States of America and he took a keen interest in noting the differences of flavour in the coffees from different districts. He left me with some samples for his friends on his ship, and a better appreciation of the value of our produce.

Three months later I received a call from a merchant in a firm of coffee importers who do a large business in the United States. Someone who told me that it was personal. "I have found that coffee is seldom well-made in the country of production, the reason being that the preparation for sale is actually left to the consumer and the little profits taken out of the consumer's pocket."

These visits to the thinking of the consumer seem to be a necessary and desirable part of the work of hundreds of visitors leave our shores hating detestable coffee and drink Kenya coffee again if they can get it.

Catering for Visitors to Nairobi

The Council of the Coffee Planters Union, to the matter up with the managers of the hotel, and so with the catering departments of the Railway. The result during the last two or three years has been a distinct improvement in the quality of coffee supplied, though in some places there is still a long way to go.

There was a natural show in 1927 and the first coffee in competition with the Government. Any visitor to the Show could, on application, obtain a sample of the coffee from various districts. The difference in quality could be noted.

An amusing incident occurred in this connection at the 1927 Show. It started off with coffee grown in the neighbourhood. This coffee had kindly been provided ready roasted and ground by a neighbouring estate, so that there should be no delay in opening.

When the judging was completed it was found that the prize for the best district exhibit of coffee had been won by a district far away in the blue, and therefore provided the café with some of this coffee and exhibited a notice "We are now drinking coffee from the district which won the District Coffee Cup." Within five minutes the lady who ran the café, instead of complaining that everyone was complaining about the quality of the coffee served, being early in the day, most of our visitors were local people and used to the flavour of the coffee grown near Nairobi, the highly acid flavour of the coffee from the winning district was strange to them. It was then that we decided to have a show made from different districts.

Our efforts at those two Shows enabled any visitors from overseas to form a correct opinion of our coffee. Incidentally, they were of educational value to our own people as to the best way of serving coffee.

However, the vast majority of tourists do not reach us when such a Show happens to be on.

Coffee in the Cup and on the Estate

Large numbers now visit Mombasa bearing tourist parties of several hundred from the United States of America and Canada. These tourists come by air, then tour the neighbouring country in motor cars and dash back to the ship. The Union now makes arrangements whenever possible that such parties, at some period of their visit, sample our coffee under the best conditions.

Early this year we had such a party. Half the passengers left Mombasa one evening, arrived at Nairobi at noon next day, after lunch took a motor drive, witnessed a Native dance at an hotel in the suburbs, here we provided the coffee, caught the train back at about 5 p.m. and reached Mombasa early next morning, in the meantime those interested were conducted round a coffee plantation and had the work of the estate and the preparation of the bean explained to them. The other half of the ship had a similar trip two days later. And, lest it be imagined from the foregoing that the Americans are a slow, lazy nation, it should be explained that those who did not come up to Nairobi the first day sailed for Zanzibar and so that island, and so for the second party.

AS LOVELY AS AN ENGLISH ORCHARD

Beauty of a Coffee Estate in Bloom

The Empire Marketing Board has issued a leaflet on East-African coffee, the course of which it is urged:

"An African coffee plantation, when the trees in bloom, is in its own way as lovely as an English orchard in April. The trees are pruned at regular intervals and are kept down to a height of about six feet. Immediately after the rains they are covered with a heavy, cherry-scented bloom, which presents a picture of great beauty. In September, October, and November these plants are so full of English roses, they are almost reminiscent of holly. Inside each berry are two beans which, taken out of their pods and roasted, are all we at home know of the coffee tree."

TRADE MARK
SIROCCO

TEA MACHINERY

Is noted for Excellence of
Design, Strength of Construction
and High-Class Workmanship

TEA DRIERS

There are four types of Sirocco
Tea Driers, all of which
made in a variety of sizes, so that
there is a machine to suit the
requirements of large or small
estates.

SORTERS

Efficient and reliable machines
for grading the tea.

WITHERING PANS

We supply pans for withering
tea by means of which the
process is always under control.

ROLLER

The Sirocco O.C.B. (Overhead
Crank Bearing) Roller is
the latest Sirocco Achievement.
The Overhead Crank Bearings
and Crankshafts in perfect
alignment, and ensures smooth
vibrationless running with the
minimum of wear.

PACKERS

The Sirocco Packaged Tea Packer
packs the tea without breaking
and has a special lubricating
system that prevents all loss of
tea, cleans the lines and eliminates
the use of lubricant.

Please send Catalogues upon application

DAVIDSON & CO LIMITED

SIROCCO ENGINEERING WORKS BELFAST

LONDON: CENTRAL HOUSE, KINGSWAY W.C.

TEA-PLANTING IN NYASALAND

Achievements and Prospects

Especially adapted for East Africa

the Tropics Planter

It is now that the tea harvest which has just been opened in Nyasaland exceeds all previous records. In fact, in addition to the growing importance of the tea industry in what is sometimes called the Cinderella of the British African Dependencies, East Africa's Settlement Number of 1927 contains the first record of tea planting in Nyasaland by the Hon. W. Tait Bowie, M.L.C., which, besides giving a valuable account of the then state of the industry and making suggestions to prospective planters on climate, land prices, and availability, yields, and finance, took the form of the always instructive point of the early history of the industry and ventured on the prediction that within the next five years the area under tea would be doubled and in ten years tripled.

In 1908 23,948 lb. of tea was exported from Nyasaland. By December 31, 1926 the area under tea was returned at 5,788 acres and the export for the year was a little over 1,700,000 lb. In 1927 the area had grown to 7,670 acres and the crop to 2,235,500 lb. The figures for 1928 are for Malanje 2,800 acres, 7,582 acres, producing 2,080,000 lb. While at the time of the above Mr. Tait Bowie's anticipations are in a fair way to be realised, a possible "share" may be the market price, which, after a long run round, fell in 1926 to an all-time low of 1s. 6d. per lb. and in 1928 to 1s. 4d. per lb. The value of the 1928 crop, as returned to the Customs, was £625,000, as against £565,640 in 1927.

The Malanje and Cholo Districts

Tea planting in Nyasaland, in contrast to what obtains in some other African Dependencies, is limited by the fact that there is not a great amount of available land as yet in a new comer. In Malanje, for example, the entire tea industry is on the highland suitable for tea growing, but that the tea here could not be bought for about £5 an acre. It is, therefore, of interest many private individuals and a number of well-managed companies, however, to invest a minimum capital of £10,000 or more and a

profitable tea plantation in the district, and as an indication of the true value of tea it is worthy that, with all the tea growing areas available in India and elsewhere, Messrs. J. L. & Co. possessed the world's largest tea estates, have since in Nyasaland and in Nyasaland, Malanje, to lay out their own plantations and grow their own tea. The factors of the very best design, and so pleased with the results of their venture that late in 1928 they formed five new companies to extend their interests. Other tea estates in Malanje are also enlarging their operations, and there is no doubt that in Malanje the 6,500 acres at present under tea will rapidly be increased.

West of Malanje and adjoining Blantyre and Chiradzulu is Cholo, one of the most important, and from the planter's point of view, the most settled district in Nyasaland. For many years it was thought that Malanje had the monopoly of land and climate suitable for growing tea, but in 1906 Mr. R. S. Hyde, one of the pioneers of the country, began experiments in tea in the Cholo district, where the soil is generally less than in Malanje, is even better than Malanje. The tea trials were made on an old coffee estate at Badanga, and they proved so successful that in 1910 a small company was formed to develop the property. Cholo, in fact, has proved a very suitable area for tea and as it is a healthy district, and a better sector tea is expected that the tea there will eventually become 20,000 acres of tea, and the soil is also good. But here again, as in Malanje, the old land available for European planters, say between 2,000 and 3,000 feet, has been taken up and would take a newcomer anything from 10 to 20 acres or more. Nevertheless, there is probably a great opportunity in Cholo for the individual planter to make good in Malanje.

Mr. A. J. W. Boulton's Assistance

One very promising sign is the increased inquiry evident in Nyasaland for areas suitable for tea, and the well-planned and scientific investigations which the Department of Agriculture is making into the matter. A special public researcher, "Conditions for Tea Growing" (Agriculture Department Circular No. 4) has since been published by the Government Printer, Zomba, in which Mr. A. J. W. Boulton, the Agricultural Officer, gives the results of his research.



up to date. These indicate that potential tea areas have been found near Western Chintse and the foothills of the Nyika Plateau; that is to say, much further north than Manje and, well up on the north-west shore of Lake Nyasa.

A careful comparison of rainfalls in tea districts tends to show that summer conditions in Nyasaland's possible tea areas are comparable to those of East Bengal and Assam rather than in Ceylon, which means that while not ideal they are good for all practical purposes. The great difference between the maximum and minimum daily temperatures which occur in North East India and in Nyasaland are not observed in Ceylon and Southern India; so far as investigations have gone, the temperatures at altitudes of 2,500-3,500 ft. in Nyasaland at about the S. latitude are comparable to those in the Brahmaputra valley at elevations of 2,000-2,500 ft. at sea-level. In an Assam tea plantation the tea crops may yield 725 lb. per acre, which is not much below the Ceylon average of 750 lb. per acre.

In Malaya very varying figures have been recorded, 750, 567, 312, 442, and 712 lb. per acre for different nature gardens.

Many North-East Indian soil series, too, have counterparts in Nyasaland, as chemical and mechanical analyses by ordinary methods are to show. Mr. Herring has been struck on comparing analyses of soil by the "acid" method. Low fertile Nyasaland soils appear to compare with many Indian tea soils; but it must be remembered that the soil analysis is by no means an absolute test of the character of soil. Fertilising and modern methods of preventing soil erosion will greatly increase the tea crops in Nyasaland soils.

Choosing the Right Seed.

The vital question of the class of seed to be planted is considered. A very small leaf China tea is very objectionable and, in fact, much of this was present in the original seed and *ide*. It is worth noting that Mr. M. F. Butler, a planter of great experience in the pamphlet, wrote for the Department of Agriculture in the Nyasaland Territory, comments strongly that seed should be obtained from Assam, only as it is raised in carefully grown, handled and inspected material, therefore probably free from disease. He is not adverse to Camille de Koning's seed, which is in evidence and well worth the consideration of settlers. The price of Assam seed landed on a Nyasaland estate would be about £12 per maund (82 lb.).

Nyasaland has been fortunate to have the assistance of Dr. F. J. Butler, Director of the Imperial Bureau of Mycology, in the investigation of the dangerous diseases of tea bushes. Butler's Reports, summarised in *East Africa*, of January 19, 1929, are expert advice which is available and of the most importance in cultivation, manuring, and drainage, which is described in detail. In Nyasaland, however, the disease incidence is low, but a healthy vigour and a proper care will greatly improve the tea future.

Dr. Butler's reports are available in the form of a pamphlet, *East Africa*, of January 19, 1929, are expert advice which is available and of the most importance in cultivation, manuring, and drainage, which is described in detail. In Nyasaland, however, the disease incidence is low, but a healthy vigour and a proper care will greatly improve the tea future.

Bundle four Bundles of cleaned sectional STANDARD plates



Very complete leaflet containing full particulars of the Standard Plate Co. Ltd. and their products. It also contains a list of agents and distributors in all parts of the world.

Standard Plate Co. Ltd.
 20, FINE WOOD STREET, LONDON, E.C. 2.

The **Central African Transport Co.**
 Blantyre, Nyasaland

Head Office and Workshop: **BLANTYRE** Box 1919
 Telephone: **THREE NINE**

TOURING PARTIES (Departures) **LARGEST AND**
TOURIST TRIPS **ZOMBA** **FAST UP TO DATE**
BIG GAME HOOTING **LONGWAY** **FLEETS OF HORRIBLE**
EXPEDITIONS **FORT JAMESON** **AND**
ARRANGED **PORT JAMESON** **TOULON VENTURE**
MINISTRY OF AIR **OF E. Rhodesia** **CENTRAL AFRICA**

Transport undertaken to all parts of Nyasaland, North Eastern Rhodesia and to all accessible parts of Central Africa.

Cable Address
Allan & Co. London

Telephone
Mansion House 6022
9572

Cables
Bentley, Broomfield, Premier, A.C., Private

T. H. ALLAN & CO.

18, GRACECHURCH STREET
LONDON, E.C.

IMPORTERS OF COFFEE SINCE 1874

CONSIGNMENTS

of
COFFEE, TEA, RUBBER

and all kinds of Produce

Marketed to the Best Advantage

INSURANCE

Effectuated on exceptionally favourable Terms
including all Risks from date of Picking until delivered on Warehouse

ADVANCES

Arranged against Consignments

Planters, Stores, Tools, Machinery, etc.
based on commission

KENYA

Mombasa & Co.
NAIROBI

TANGANYIKA

C. C. Moreson
MOSHI
and
ARUSHA

UGANDA

J. Gibson
KAMPALA
K. G. Leslie
MUBENGA

A DAY ON COFFEE ESTATES

The Coffee Life in Tanganyika.

By the author of "The Coffee Life in Tanganyika."

By arrangement with the author.

Copyright, 1929, by the author.

Published by the author.

Printed in Tanganyika.

Price 1/6.

Order from the author.

Address: [illegible]

[illegible]

[illegible]

[illegible]

[illegible]

[illegible]

[illegible]

[illegible]

[illegible]

[illegible]

[illegible]

[illegible]

[illegible]

[illegible]

[illegible]

[illegible]

[illegible]

[illegible]

[illegible]

[illegible]

[illegible]

[illegible]

[illegible]

[illegible]

[illegible]

[illegible]

[illegible]

[illegible]

[illegible]

[illegible]

[illegible]

[illegible]

[illegible]

[illegible]

[illegible]

[illegible]

[illegible]

[illegible]

[illegible]

[illegible]

[illegible]

[illegible]

[illegible]

[illegible]

[illegible]

[illegible]

[illegible]

[illegible]

[illegible]

[illegible]

[illegible]

[illegible]

...and the negroes for making up the roads
...the... They... many of them
...were... use...
My boy called me for dawn...
coffee, tea, and fruit. After seeing the...
and going in their orders to... I had break-
fast, an English bread, tea, and... in the saying
"to breakfast on man...". This... on my table
an early century model, Kassar, by name, found
the estate and visited my gangs, and by eleven I was
back in the house for sick parade. Nothing kept
a boy for me, together with a... in the evening,
not for the man only, but for the children, if it
is amazing what good results can be got with Epsom
salts, cayenne, corrosive sublimate, and dressing
for... and quinine. When... have
ceased... of your white face... for oil is
indicated.

...not spoiled by... work,
...and on the mule, and feet... labour was
all... work... the men... get it all
...for... which... as...
was to... to... a... could get his job
...the... and... free to go
...that... and... enjoy his huge
...and... an... of fun
and domesticity. ... could work
for hours in the... with nothing to chew but a bit
of cassava... and... but they did
it, and... and... with their
custom.

After... would take a... when my wife and
...M... were... in... stare
... were... This was the time to
... explore my estate, note...
... and plot... the work. Home for a... and
... chat with my... to improve... Swahili; dinner
... take a... and...
... and... to
... with... and... had...
... and... in the...
... which... you... in
... we... to...
... neighbours... away.
... was... of a... and... on the
... and... to...
... things are... now... parties in
... the afternoon... dances...
... and all the...
... the... with... on a
... profit on... the estate was going
... And... to... to...

...and... sort.

[illegible text]

Tanganyika Territory
 ESTATE AGENTS,
 MANAGERS AND SECRETARIES.
 Inspections, Valuations and
 Reports on Properties anywhere in Tanganyika
 Registers of Properties
THE TANGANYIKA STATE OFFICE
 I D A S S A L A A M
 MANY YEARS' EXPERIENCE
 Office: [illegible] Telephone: [illegible]

Cable
FRIARTON, LONDON.

Telephone
MONUMENT, 4168-4169

Codes

Bentley, Universal, Lieber's,
A.B.C. Western Union

ROBINSON FLEMING & CO.

9, BILITER SQUARE
LONDON, E.C. 3.

AND AT LLOYDS.

Merchants and Dealers in
EAST AFRICAN SISAL, COPRA,
COTTON, COTTON SEED, RUBBER,
COFFEE, KAPOK, KAPOK SEED
and produce of all descriptions.

All Classes of Insurances Effected.



Watch them
on the Links
THIS
SEASON

Brighter Shoes for Golf

BLACK & WHITE

also
TAN & WHITE

One example of Hundreds. Beautifully
finished on the Best Box or Willow Gull. Soles of
double wearing, non-skidding
Y.S. rubber. A product of the
Dominion Rubber Company.
Single shoe sent on approval to
Home or any address.

25/-



We send all over the World C.O.D.
Money instantly returned if not satisfied

Write for **GOLF & GENERAL CATALOGUE.**

W. ABBOTT & SONS, LTD. (PHIT-ESI)

56-60, LUDGATE HILL, LONDON, E.C. 4.

Branches: Principal Streets LONDON, LIVERPOOL & PARIS.

MILWARD'S SPRAYERS

FOR CAR WASHING, GARDEN and PLANTATION SPRAYING

THE "IRON ARM"
"SNAPSAC"
MODEL IS USED
ON MANY
COFFEE
PLANTATIONS



Illustrations show a Milward's
Iron Arm sprayer in
operation for car washing
and garden spraying.
There are other models in
stock suitable for every
spraying need.

Stocks of Iron Arm Sprayers
are available in KENYA at our
Representative
UNIVERSAL ENGINEERING CO., Ltd.
P.O. Box 540, Nairobi.
Send for literature, leaflets and
Price Lists.



IDEAL FOR
LIME-WASHING,
DISINFECTING
AND SANITATION
WORK

Sole Makers: **HENRY MILWARD & SONS, Ltd.**
REDBATCH ENGLAND

THE
STANDARD BANK
of SOUTH AFRICA LIMITED.

BANKERS TO THE
Imperial Government in South Africa and to the Government of
Northern Rhodesia, Southern Rhodesia, Nyasaland and Tanganyika

Head Office

15, CLEMENTS LANE, LOMBARD STREET

and

77, KING WILLIAM STREET, LONDON, E.C.4.

London Wall Branch—53, LONDON WALL, E.C.2.

West End Branch—9, Northumberland Avenue, W.C.2.

New York Agency—67, Wall Street.

Hamburg Agency—Bank of British West Africa, Ltd., 49-53, Schulzenberger-strasse

Over 350 Branches, Sub-Branches, and Agencies in South and East Africa.

BRANCHES IN EAST AFRICA.

Arusha
Bukoba
Dar es Salaam
Eldoret
Jinja
Kampala
Kisumu
Kitale
Lindi
Mombasa

Morogoro
Moshi
Mwanza
Nairobi
Nakuru
Nanyuki Agency
Nyeri
Tabora
Tanga
Zanzibar

PRODUCE OF ALL KINDS FROM EAST AFRICA

THE STANDARD BANK OF SOUTH AFRICA LTD., finances
Exports from EAST AFRICA, and being in close touch through its
LOCAL BRANCHES, with the **IMPORTANT PRODUCE CENTRES**,
is able to offer **EXCEPTIONAL FACILITIES**.

The **STANDARD BANK MONTHLY REVIEW** is sent post free on
application and gives the latest information on all South and East African
matters of Trade and Commercial Interest.

BERTRAM HOWSON, London Agents

There are News in the Advertisement Columns. Read them.

THE POINTS OF A GOOD COCONUT PALM

A few tips likely to be useful.

The following are some varieties in East Africa, and a good sample of them is given, with appropriate illustrations, which can be compared with from the same source. The coconut palm is a very hardy and vigorous tree, and the fruit is large and rich in oil. It is a very important crop in many of the islands of the Indian Ocean, and is also grown in some parts of the East African coast. It is a very hardy and vigorous tree, and the fruit is large and rich in oil. It is a very important crop in many of the islands of the Indian Ocean, and is also grown in some parts of the East African coast.

The palm, on the other hand, is a very hardy and vigorous tree, and the fruit is large and rich in oil. It is a very important crop in many of the islands of the Indian Ocean, and is also grown in some parts of the East African coast. It is a very hardy and vigorous tree, and the fruit is large and rich in oil. It is a very important crop in many of the islands of the Indian Ocean, and is also grown in some parts of the East African coast.

A little consideration will make it clear that the advantage of these palms in the tropics is that they are the laboratory of the tree, in which the fruit is produced for food for the young, but not for the parent. It is a very hardy and vigorous tree, and the fruit is large and rich in oil. It is a very important crop in many of the islands of the Indian Ocean, and is also grown in some parts of the East African coast.

The fruit of the palm is a very hardy and vigorous tree, and the fruit is large and rich in oil. It is a very important crop in many of the islands of the Indian Ocean, and is also grown in some parts of the East African coast. It is a very hardy and vigorous tree, and the fruit is large and rich in oil. It is a very important crop in many of the islands of the Indian Ocean, and is also grown in some parts of the East African coast.

Under the name of the coconut palm, there are many

varieties, but the most common is the one which is known as the "Coco de Indes". This is a very hardy and vigorous tree, and the fruit is large and rich in oil. It is a very important crop in many of the islands of the Indian Ocean, and is also grown in some parts of the East African coast. It is a very hardy and vigorous tree, and the fruit is large and rich in oil. It is a very important crop in many of the islands of the Indian Ocean, and is also grown in some parts of the East African coast.

In these circumstances, the grower has only one course open to him. He must select his plants from seedlings in the nursery which show the character desired. This can be done when the young palm has developed three or four leaves. The shoot will be made of sturdy, young, upright stalks, thick in the base with stout, short, leaf stalks and with leaflets arranged in a fan-like pattern. Any tendency to "leggy" growth, with long, slender leaf stalks and narrow leaflets, should be rejected, showing a sure indication

as to the character of the soil. The palm must have deep soil with good drainage, which in the tropics implies a certain amount of the soil water, stagnant water in the winter, does not cause the clay, or a sandy, peaty soil, which is liable to overheat in a hot, sunny land. It is liable to rot in shallow soil, and in such soils, it is better to plant in a well-drained soil, or to plant in a well-drained soil, or to plant in a well-drained soil.

The fruit of the palm is a very hardy and vigorous tree, and the fruit is large and rich in oil. It is a very important crop in many of the islands of the Indian Ocean, and is also grown in some parts of the East African coast. It is a very hardy and vigorous tree, and the fruit is large and rich in oil. It is a very important crop in many of the islands of the Indian Ocean, and is also grown in some parts of the East African coast.

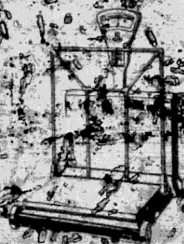


The Avery Predetermined Weight Scale cuts out unproductive labour costs.

By saving time the Avery Predetermined Weight Scale adds to your profits. One Avery Predetermined Weight Scale occupying the attention of ONE operator, can often do the work of TWO inferior, out-of-date machines.

Accurate, reliable, accurate, made to gauge for easy replacement. These qualities make the Avery Predetermined Weight a really profitable investment.

EVERY



THE INDICATOR

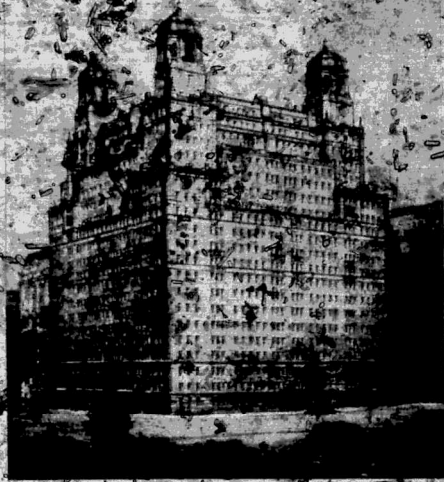
Predetermined load, in ten pounds of weights on the column, which can be locked to prevent. Note the labourer required in weighing as compared with the ordinary platform scale.

SEND FOR PORTLAND FORM DESCRIPTIVE SHEET No. 10

W. & T. AVERY Ltd.
Works Dept., Gooch Foundry,
BIRMINGHAM.

IN EVERY WEIGH A PROFIT

"RELIANCE" METAL WINDOWS



BELSFORD APARTMENT,
NEW YORK CITY.

WILLIAMS & WILLIAMS Ltd. RELIANCE WORKS CHESTER

LONDON
MANGON
SHEFFIELD
WELLS
BIRMINGHAM
GLASGOW
BRISTOL
CARDIFF
DUBLIN
LIVERPOOL
MANCHESTER
NEWCASTLE
SHEFFIELD
WELLS



Why not obtain land in the beautiful,

KILIMANJARO DISTRICT

and enjoy a Healthy Life amidst Delightful Surroundings.

THE WATER IS THE PUREST IN EASTERN AFRICA.

CAPITAL SPORT IN BIG GAME SHOOTING AND
MOUNTAIN CLIMBING.

MAJOR A. E. PERKINS, I. A. S. A., would be pleased to supply
information to prospective Settlers and Tourists.

P. O. Box No. 5

MOSHI

Uganda Territory

Kibo, Moshi

Barotsi

DEVELOPMENTS IN THE ARUSHA DISTRICT

Greatest Progress in the Recent Past.

Victor O. Lusha, Correspondent.

With the fast saw Arusha a few years ago would be astounding at the progress that is building and general development. Where in the past part of 1927 there was a single building there is now a street of well built shops, representing the bazaar or Asiatic quarter, and the bazaar buildings, generally of concrete blocks, are a great credit to the township.

Large and commodious store buildings have also sprung up in the European commercial quarter—the township is divided into European residential, European commercial and Asiatic and African quarters and a modern hotel now stands opposite the Post Office. Several residences have also appeared, and many plot owners are only awaiting the advent of the railway to begin building. Tenders are already out for the new hospital, which, through the kind agency of Sir Milsom Rees, has received funds from the Rothschild Trust.

Increased Coffee Planting.

Planting is also developing along steady lines, and many new areas are coming under cultivation this year. A large sisal company has been floated with enormous acreage on the Kikuleba river to the south of a sisal and coffee area which has been planted. That area known as the Lower Ndorunda is also undergoing steady development and maize, coffee, and groundnuts are doing well. Plantations have been established and there is general evidence of progress. The land is eminently suitable for sisal.

Sisal and coffee planting is also taking place on the northern slopes of Mount Meru, where Sir Milsom Rees has recently acquired further property.

Mr. K. V. Painter, of Cleveland, U.S.A., a keen business man who was quick to see the possibilities of Arusha, has received two planting permits and a good share of the sisal property. Painter first came to the district about a couple of years ago and has since then been busy with his new business.

A few months ago the Government officials had the land and the crops well satisfied with their work.

During the past year a number of the land division formed their own association under the able chairmanship of Mr. Walter Roberts, Lloyd Moss, and J. D. S. O'Connell, and the area is now showing rapid development.

A number of the business houses have recently

been built up, the most notable being Messrs. Geo. Nash, Messrs. H. Duncan (of Nairobi fame) and Messrs. A. West, a team of engineers, the bazaar and a motor garage business, with building contractors, plumbers, painters, concrete block makers, floor and woodworkers, etc. This is an enormous country and to carry it off in 1929 when it was so long since impossible to procure a pound of nails. As a result a growing township, a thriving business is soon to be established.

The railway, which since last year has been in operation for goods traffic from Tengeru station near Mt. Meru, Arusha, is expected to reach the township terminus in three or four months. Heavy building work has been responsible for the temporary delay, but the contractors are proceeding with all despatch.

Transport has advanced, and in such a temperate climate the sports of Arusha promises well. Two football clubs have been formed and some ten games have taken place, the dribbling code has also been introduced, and games are frequent. The local club offers prizes for aspirants to make a man of straw.

The advent of the railway has already opened up Mbugwe and Umuja areas to the west of Arusha, where about a score of plantations are in process of development. Coffee promises well.

The Busy Bank.

A few years ago banking business was deemed insufficient to warrant the opening of a branch. Today the local branch of the Standard Bank is the busiest in the town of Arusha. The volume of business has increased enormously during the past year, and there is every evidence that it will continue to do so. Another busy scene is that around the post office, and ere long a much more commodious building will be necessary to transact the growing business.

An aerodrome is being prepared near Arusha, and this if the service developed will bring Arusha within a few hours of the Kenya coast.

A scheme is on foot for the erection of a church and school under the guidance of the Urban Chambers of Central Tanganyika.

Irrigation and water conservancy schemes are being introduced and water power is being utilised, but this very important matter is still in its infancy. Credit is, however, due to those settlers who are proving the value of the abundant water supply in the district.

Everywhere the civilising influence of the settler is becoming apparent, and little bits of England are being transplanted year by year, even to prize the Hawthorn hedges.



LEARN TO FLY WHILST ON LEAVE

Lieut. Col. G. L. P. Henderson specialises in High Speed Instruction in Flying for men on leave from Overseas. Qualifications for Licences guaranteed in a period varying from one week to one month at the cheapest rates in England.

Any make of machine supplied on deferred payment system.

Lieut. Col. G. L. P. HENDERSON,
CROYDON AIRFIELD,
SURREY.



Infant's Suckle

Infant's Suckle is a natural milk substitute which is as rich and as nutritious as the mother's milk. It is taken by the mother before and after the birth of the child. It is an adequate supply of rich milk and the mother is enabled to maintain her strength and health. It is naturally and easily assimilated and is as rich and as nutritious as the mother's milk. It is taken by the mother before and after the birth of the child. It is an adequate supply of rich milk and the mother is enabled to maintain her strength and health. It is naturally and easily assimilated and is as rich and as nutritious as the mother's milk.

OVALTINE

— IONIC FOOD BEVERAGE —

Mothers to Breast Feed their Babies
Sole Agents and Stores throughout the British Empire
WANDER, L. L. London, S.W.7

MARSHALL Heavy Oil Engines



18-25 H.P. ...
ABSOLUTELY RELIABLE FOR ...
ELECTRIC LIGHT AND POWER ...
GENERAL INDUSTRIAL SERVICE ...
MARSHALL, SOBS & COMPANY, LTD.
Engineers, 25, BISHOPSGATE, Lincs.,
3, London Wall, London, E.C.3.
New Street, Birmingham.

The Ideal Sprayer and Lawnmower Machines

The most complete up-to-date
equipment for the garden and
domestic economy.



Martineau & Smith
makes them particularly suitable for
garden plantations and for
special requirements.



Martineau & Smith
with patent mowers
and lawnmowers. Price £4 8 00

Martineau & Smith, Bullseye Road, Birmingham, Eng.



President will be responsible to be the Chairman of the first committee of the company, which will be the principal office in London. Air Park, a twelve-mile-in-diameter circle, will be the site of a flying club, and the surrounding park land will provide space for two aerodromes. Plans will be laid out by a series of provincial air parks and the main servicing and big game areas in the country. Step by step it is the policy of the company to provide a nation-wide organisation of aerodromes and landing grounds for the use of all owners of civil aircraft, and to supplement these by the provision of machines for training club flying and for the servicing of aircraft privately or commercially, and the maintenance of aircraft of all types.

Members of the flying clubs formed by National Flying Societies will enjoy considerable benefits through belonging to a large organisation. The members of one club will be honorary members of all the other clubs affiliated to the group. They will be taught to fly at a total cost which should not exceed £40, including entrance fee and subscription; they will be able to hire two- and three-seater touring aeroplanes at inclusive rates as low as 2/6 per mile, and they will have the free use of the company's system of air parks and landing grounds. It is an ambitious undertaking, representing a serious attempt to fit into practical effect those developments which are essential if we are to establish, on a permanent basis, Britain's supremacy in all spheres of aviation.

Flying will leap into popularity.

In days gone by the stage coach, the pack and the bicycle, the motor car, in fact every new form of transport was received with distrust and suspicion which were gradually dissipated through familiarity until eventually they met with active acceptance. The same things will inevitably happen in the case of the aeroplane; in fact it is happening at the present moment.

Although flying on a really universal scale may be comparatively slow growth in the other countries where excellent travel facilities of all kinds are available everywhere, I have no doubt that in the developed lands it will quickly leap into popularity and be the means of a widespread extension of business and commercial enterprise once its advantages are generally recognised. In East Africa it is more rapidly than elsewhere, the aeroplane may be expected to establish itself quite soon as the most convenient of conveyances for travel and commerce.



ASK for and ENJOY upon obtaining **CHAMBERS' Empire Cedar Pencils**. F. Chambers & Co. Ltd. are the only **Pencil Manufacturers** using **Empire Cedar** exclusively. If you have any difficulty in obtaining Chambers' Pencils write direct to the Garden Pencil Works, Stapleford, Notts.

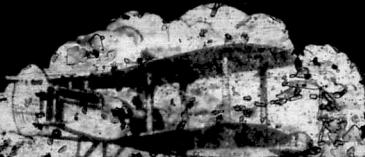
H. MALCOLM ROSS,
F.A.I.C.E., F.Z.S.
will furnish
VALUATIONS and REPORTS of ESTATES
in **TANGANYIKA TERRITORY.**
Address: **CUSTOMS ROAD, TANGA.**
Coded: **A.B.C. Sixth Edition**
3 years Planning Department, Colonial Empire Society 4 years East Africa

EAST AFRICA

SHELL

AVIATION SPIRIT

SELECTED FOR
OUTSTANDING AERONAUTIC
ACHIEVEMENTS



WHEN ON LEAVE LEARN

JOIN THE HANWORTH CLUB

IN Hanworth Park, one of the loveliest spots in Middlesex, a fine old country mansion has been turned into an up-to-date and luxurious country club. Special landing grounds are provided, together with complete service shops and ship hand-out facilities. Both flying and motor cars are being employed now. The club is well equipped for the winter months with all the amenities—golf, tennis courts, billiard courts, a large dining room with a restaurant, a bar, lounge and verandah and numerous bedrooms.

TUITION

MEMBERS will be given practical tuition in flying in the very latest types of safety aeroplanes by an experienced staff at very reasonable rates. Flying is NOT difficult to master. Anybody who can drive a car and play tennis can learn to fly. You can learn to fly in less than a week. It is a pleasant surprise. The fee, which includes car from London to and from the Club House at Hanworth Park, is £10.

MEMBERSHIP RATES

A LIMITED number of members are now being admitted to the Hanworth Club at the following rates: **ORDINARY MEMBERS.**—Flying members: Entrance fee and 3 gns. annual subscription. Non-flying members: 3 gns. and 3 gns. respectively. **OVERSEAS MEMBERS.**—The entrance fee is waived for overseas members. Subscriptions (six months) 6 gns. per member. 2 gns. per son flying member. Women members admitted at these reduced rates, however, will not be entitled to fly when aircraft are required by ordinary members on Sundays and Saturdays.

A booklet giving full details of the National Flying Service Organisation will be sent on request.



Stand 75
Aero Exhibition
July 16th

DIRECTORS

- CAPT. THE RT. HON. F. E. GIBSON
- J. G. FEEL, ESQ., J.P. (V. S.)
- THE HON. LADY BAILEY
- COLONEL THE MASTER OF BRIMLEY
- SIR ALAN J. COBHAM, B.E., M.C.
- A. G. HEMSLEY, ESQ.
- W. STEPHENSON, ESQ., M.C.
- LIEUT. COLONEL EDWARD C. BENTON
- R. F. BOWEN, ESQ. (Deputy Chairman)

NATIONAL FLYING

Telephone: Gower Street 9316.

Telephone: Gower Street 9316.
10, Gower Street, London, W.C.2

10, Gower Street, London, W.C.2

10, Gower Street, London, W.C.2

10, Gower Street, London, W.C.2

LONDON, W.C.2

AIR TRAVEL IN EAST AFRICA

Development of Local Services

Specialized version for East Africa

By J. Graham Dawson

the *Kenya Pioneer* writes

Possibilities of the present realities small as they are, the first aviation meeting in Kenya four machines were present, together with six or eight capable pilots, and that was an admirable meeting. To-day our ships are reduced to one, a private commission—the owner of which is at present away from Kenya. This says little for the absence of Kenia's main during the past twelve months.

However, a considerable amount of ground work has been put in and the new Air Port at Nairobi is the promise of what is to come. The flying tourists on their way north or south will arrive untroubled and in haste. Speak of the ground as excellent, but complain bitterly of the game which frequents the area and are more concerned over the possibilities of "prop" damage than to talk of the future of local flying.

Still, progress is bound to come, all the more quickly if Government will support any local flying clubs or aviation companies which start to operate. With the opening up next year of the Imperial Airways route from Alexandria to Cape Town, there will be need for internal branch lines to link up at Kisumu with important centres in these East African Dependencies. It will take time, but eventually such lines will be well patronised by local settlers and business men. The amounts of time saved is considerable for instance, Eldoret is now reached in a couple of hours from Nairobi at normal cruising speed against six or seven hours by air if the roads are dry.

The Most Useful Route

Possibly the most useful route would be between Dar-es-Salaam and Nairobi, which distance could be covered in a few hours against a possible five days by boat and train. From the point of view of an employer it would be cheaper to send a traveller by air taking into account the salary paid and the loss of time when the slower method is used. The benefit to Dar-es-Salaam dwellers would be considerable for they could get away from the often intolerable heat of the coast by a smooth journey of a few days without just to find themselves in the cool uplands. On one of these days there is going to be a regular flying slips between Mombasa, Tanga, Dar-es-Salaam and Zanzibar, and the enterprising contractor who will in time make money by his factories and out that flying is safe, simple, cheap and a great time-saver. It is not surprising that the big plantation companies and the coffee planters possess their own machines and flying grounds suitable for light planes will come generally throughout the territories. Only we hope that the air pilot will not be so careless as his brother on the road.

Both in time and money terms such as Nairobi should benefit considerably by the advent of general flying for Nairobi is something under a two-hour trip from the capital of the Colony. The machine could bring in passengers on the early return flight, take them back in the late afternoon and return with the mail and their catch before dark. For some eight hours has been spent on the water. If this became too much, a class season will have to be instituted.

In the same year ships arrived at Nairobi and the number of arrivals have increased from 1930 to 1931. These last Easter holidays with the company in through Africa and the Great East Africa, wishing the Schneider Cup and other trophies should date. May give a look at the air.

BY AIR MORE CHEAPLY THAN BY TAXI

The British East African Airways Company

A recent R.E.A.A. circular letter states that commercial aerial navigation in East Africa is being inaugurated by the British East African Airways Ltd., whose headquarters in Nairobi and who intend operating in all parts of East Africa. They have secured the services of Captain Bright, who has flown four times between London and Cape Town and is therefore well acquainted with local conditions. Aeroplanes are now ready in various important centres and they are in course of construction, so that in a very short time it will be possible to fly by air anywhere.

The saving of time is a profitable matter of course be enormous. For instance, you can leave Nairobi at 8 a.m. and reach Kitale before 11 a.m., leaving the time for the return journey at 3 p.m., you would be in Nairobi before 6 p.m. This journey by road under the most favourable conditions would take at least nine or ten hours for the single trip.

The fares charged are very reasonable, being only 2s. 7d. per mile, with a reduction of 50% on the return journey, the machines, a running empty are charged at half rates. I have just concluded arrangements with the B.E.A. Airways Ltd., who have agreed to give all members and their families the substantial discount of about 13% which brings the actual cost to only 1s. 6d. per mile, with a reduction of 50% on the return journey. This fare by air therefore works out for members more cheaply than if a taxi were used. In the case of the mileage is less than the land route and the saving in time, trouble and expense could be compared. The seats will be given on application.

The B.E.A. Airways Ltd. are also instituting special trips for the summer and down country members who can visit the reserves for instance over the Game Reserve, so-called game areas in the Valley and over the Mombasa-Cape Town-Mombasa and even over the skating lake near the summit of Mount Kenya.

2,500,000 gallons of water

The British Water Works Unit Place



England, Wales, and Scotland

Brushwaite & Co. Engineers Ltd.

35 Broadway Building, Westminster, S.W.1