

EAST AFRICA

THE ONLY NEWSPAPER IN EUROPE DEVOTED
EXCLUSIVELY TO THE INTERESTS
OF THOSE LIVING, TRADING, HOLDING
PROPERTY OR OTHERWISE INTERESTED IN
EAST AND CENTRAL AFRICA.
A WEEKLY JOURNAL

Vol. 3, No. 25

THURSDAY, AUGUST 19, 1920

Annual Subscription
2s. 6d. post free

Sixpence



BRITISH INDIA LINE

REGULAR SERVICE LONDON AND MARSEILLES TO AND FROM EAST AFRICA
via Suez, Aden, Bombay, Port Sudan, carrying First and Cabin Saloon
passengers.

FAST MAIL AND PASSENGER SERVICE, BOMBAY—KILINDINI—DURBAN
Fortnightly, via East African Coastal Ports, also calling at Seychelles Islands (Maha).

EAST AFRICAN LOCAL SERVICES—M.V. "DUNRA" AND M.V. "DWARA"
Connecting with other services and providing frequent facilities at smaller ports and
touched by the West India and Mail Steamers.

For full details and attractive Booklets apply:

Passage: P. & O. HOUSE, 14, COCKSPUR STREET, W. 1.

Freight: GRAY, DAWES & CO., 122, LEAFENHALL ST., E.C. 3.

Freight: GELLATLY HANKEY & CO., 110, DOCK HOUSE, BILLITER ST., E.C. 4.

Tanganyika Territory

ESTATE AGENTS
MANAGERS AND SECRETARIES

Inspections, Valuations,
Reports on Properties, any where in Territory.

Register of Properties for Sale

THE TANGANYIKA ESTATE OFFICE

MANY YEARS OF AFRICAN EXPERIENCE

Telegrams: "TANGANYIKA" to the Director of the
General Post Office, London, W.C. 2.
Post Office: No. 14, Cannon Street, London, E.C. 4.

TAILORING
EQUIPMENT

INSURANCE
OF ALL KINDS

GRIFTHS, W. ALISTER LTD.
21, MARK LANE
LIVERPOOL LONDON, W. 1

AN ASTOUNDING OFFICIAL DOCUMENT.

CHRYSLER MOTORS



THE NEW PLYMOUTH SEDAN

Such QUALITY never suggests so low a price



ANY estimate of the value of a Plymouth priced at a certain amount to exceed the actual figure. Plymouth is a full-size car through and through—from body and chassis to spring and axles. It's a Chrysler styled, designed, equipped. Its

efficient and self-evident quality measures up to the highest standards dictated by Chrysler Motors engineering laboratories.

The Plymouth price is so amazingly low that it is difficult to thin each of its qualities over.

PLYMOUTH

RHODESIA MOTORS, Ltd.

Box 587 Salisbury

RHODESIA

CARR LAWSON & Co.

KENYA COLONY

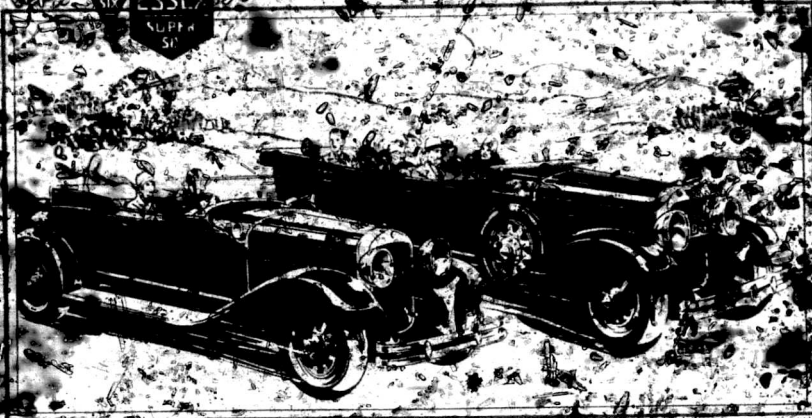
Distributors for a large range of Plymouth and De Soto Cars

EAST AFRICA

HUDSON
SUPER
SIX

ESSEX

SUPER
SIX



Popularity Based on Value and Performance

Motorism enthusiastically approves the beauty, economy and appointment of Essex the Challenger and the Greater Hudson. In thousands of demonstrations, motorists thrill to the speed, performance and sturdiness of these fine Super Sixes. They admire the colours, lines and fittings of the new heretofore double-acting 4-wheel brakes and the wide selection of bodies. Thousands are inspecting them, driving them and buying them!

Such popularity is not achieved by chance. It is based upon motorism's recognition of outstanding value and performance. Both Essex the Challenger and the Greater Hudson offer more expensive features than many cars costing far more. See these two Super Sixes at your Hudson Essex dealer. Inspect the Greater Hudson with its 19 body styles on 2 chassis lengths and Essex the Challenger with 7 types of bodies. Then you will understand the reason for the sweeping popularity of these two great cars.

The
GREATER HUDSON
and **ESSEX** The Challengers

BARR, LAWSON & CO. LTD.
SIXTH AVENUE, NAIROBI, KENYA COLONY

When writing to Advertisers mention East Africa and enclose Special Attention

THE EMPIRE MARKETING BOARD

Report for 1928-29

It cannot be said that the Agricultural Inquiry Commission's Report on the Empire for 1928-29 is a masterpiece of statistical analysis. It is a valuable contribution to the knowledge of the Empire, and its conclusions are sound. It is a pity that it is not more fully supported by the Empire Marketing Board, which is the body which is to be responsible for the carrying out of the recommendations of the Inquiry Commission. The Board has not yet been formed, and its work is still in the future.

The Inquiry Commission's Report is a valuable contribution to the knowledge of the Empire, and its conclusions are sound. It is a pity that it is not more fully supported by the Empire Marketing Board, which is the body which is to be responsible for the carrying out of the recommendations of the Inquiry Commission. The Board has not yet been formed, and its work is still in the future.

The Inquiry Commission's Report is a valuable contribution to the knowledge of the Empire, and its conclusions are sound. It is a pity that it is not more fully supported by the Empire Marketing Board, which is the body which is to be responsible for the carrying out of the recommendations of the Inquiry Commission. The Board has not yet been formed, and its work is still in the future.

HOW NATIVE NEEDS INCREASE

The Government of the Cape has made a valuable contribution to the knowledge of the Empire for 1928-29. It is a pity that it is not more fully supported by the Empire Marketing Board, which is the body which is to be responsible for the carrying out of the recommendations of the Inquiry Commission. The Board has not yet been formed, and its work is still in the future.

The Government of the Cape has made a valuable contribution to the knowledge of the Empire for 1928-29. It is a pity that it is not more fully supported by the Empire Marketing Board, which is the body which is to be responsible for the carrying out of the recommendations of the Inquiry Commission. The Board has not yet been formed, and its work is still in the future.

LAST WEEK'S RAINFALL IN KENYA

The Eastern Africa Dependencies Trade and Information Office has received an official cable from the British Government stating the past week's rainfall in Kenya. The rainfall was as follows: Nairobi, 1.5 inches; Mombasa, 1.5 inches; Eldoret, 1.5 inches; Kisumu, 1.5 inches; Malindi, 1.5 inches; Lamu, 1.5 inches; and other places, 1.5 inches.

SLAVERY IN GAMBIA

The British Government has received a report from the African Commission on the subject of slavery in Gambia. The report states that there is a large number of slaves in Gambia, and that the British Government should take steps to abolish slavery in Gambia. The British Government has agreed to take steps to abolish slavery in Gambia, and has agreed to take steps to abolish slavery in Gambia.



Sweet
 Several Australia, New Zealand, and South Africa
 Associated
 Solely Associated with
 Associated

JACOBS BISCUITS

African Marine & General Engineering
COMPANY LTD. KINSHASA
 Ship Repairs, Sail Making and Repairs, Motors
OXY-ACETYLENE WELDING
 and CUTTING
 Sheet Metal, Air Equipment, Carpenters, Ship Fitting, and other work. Machinery, tools and repairs. Sales of all types of machinery, implements, etc. are invited. Telephone 230. Kinshasa.
TELETYPE UNIT
 Telephone 230. Kinshasa. A. S. M. Kinshasa.
SMITH, MACKENZIE & CO., Agents for East Africa

SMITH, MACKENZIE & CO.
 20, FORT ST. NOMBASA
 N. MOBI, KAMPALA, N. B. SALAM, ZAMBIA, TANZANIA, LINDA
GENERAL MERCHANTS
STEAMSHIP AGENTS
FORWARDING AND EXPORT AGENTS
 CONSIGN YOUR GOODS AND SECURE TO US
 BULKY FREIGHTS THROUGH OUR OFFICE
 BY AIR, BY SEA, AND STORED
 IN OUR WAREHOUSE

"Kodak" Photographic Products
 set the standard throughout the World

"Velox"
 The original Gamma-Ray film
 Every sheet has the name "Velox" on the back. Every sheet is thoroughly tested at the Kodak Works in Great Britain, and the result of the test is stamped on the back.

"Kodak" Film
 The original Roll-Film
 Each roll is initially packed in a special container in a lead-lined box. Ask for "Kodak" Film - the difference is in the quality.



You can rely on "Kodak" Products
 Repurchase, inspection, and the East Photographic Laboratories in Kenya guarantee them. Millions of users attest their quality.

Kodak was developed by the Hovos & Mischler Ltd. East Africa, Kenya

Gailey & Roberts Ltd. (Incorporated in England) **Gailey & Roberts Ltd.** (Incorporated in Kenya)
 Registered in 1904. Registered in Kenya under No. 14376 of 1954. Registered in 1954.

The Established
Engineering and
Agricultural House of Kenya

Through honest endeavour and Meritious Service have attained the national reputation which is our pride and our field of achievement.

Progressive Settlers want us First.

Gailey & Roberts Ltd.

P.O. Box 66 - NAIROBI. Phone No. 100

For Service and Satisfaction

Branches: MOMBASA, ELDORET, JINJA, KAMPALA, AND N. B. SALAM

Advertisements gladly quote you prices

EAST AFRICA IN THE HOUSE

SIR CHARLES BOWRING'S RETIREMENT

Employment of Children in Kenya

The following questions and answers dealing with East Africa were given in the House last week. Mr. G. G. G. asked the Under Secretary of State for the Colonies whether he had received any reports from Mr. K. M. G. on the employment of children in the Colony of Kenya. The Under Secretary replied that he had received reports from Mr. K. M. G. on the employment of children in the Colony of Kenya. The Under Secretary stated that the children were employed in the public works and in the agricultural and stock raising industries. He stated that the children were employed in the public works and in the agricultural and stock raising industries. He stated that the children were employed in the public works and in the agricultural and stock raising industries.

The Under Secretary stated that he had received reports from Mr. K. M. G. on the employment of children in the Colony of Kenya. He stated that the children were employed in the public works and in the agricultural and stock raising industries. He stated that the children were employed in the public works and in the agricultural and stock raising industries. He stated that the children were employed in the public works and in the agricultural and stock raising industries.

Kenya and Nyasaland

The Under Secretary of State for the Colonies proposed to group the military territories of Kenya and Nyasaland under one command. He stated that the military territories of Kenya and Nyasaland were to be placed under the command of the same officer. He stated that the military territories of Kenya and Nyasaland were to be placed under the command of the same officer. He stated that the military territories of Kenya and Nyasaland were to be placed under the command of the same officer.

The Under Secretary of State for the Colonies proposed to group the military territories of Kenya and Nyasaland under one command. He stated that the military territories of Kenya and Nyasaland were to be placed under the command of the same officer. He stated that the military territories of Kenya and Nyasaland were to be placed under the command of the same officer. He stated that the military territories of Kenya and Nyasaland were to be placed under the command of the same officer.

The Case of Matthew Wellington

Mr. G. G. G. asked the Under Secretary of State for the Colonies whether he had received any reports from Mr. M. W. on the case of Matthew Wellington. The Under Secretary replied that he had received reports from Mr. M. W. on the case of Matthew Wellington. He stated that the case of Matthew Wellington was being dealt with by the appropriate authorities. He stated that the case of Matthew Wellington was being dealt with by the appropriate authorities. He stated that the case of Matthew Wellington was being dealt with by the appropriate authorities.

Mr. G. G. G. asked the Under Secretary of State for the Colonies whether he had received any reports from Mr. M. W. on the case of Matthew Wellington. The Under Secretary replied that he had received reports from Mr. M. W. on the case of Matthew Wellington. He stated that the case of Matthew Wellington was being dealt with by the appropriate authorities. He stated that the case of Matthew Wellington was being dealt with by the appropriate authorities. He stated that the case of Matthew Wellington was being dealt with by the appropriate authorities.

Congo Basin Matters

Mr. G. G. G. asked the Under Secretary of State for the Colonies whether he had received any reports from Mr. C. B. on the Congo Basin matters. The Under Secretary replied that he had received reports from Mr. C. B. on the Congo Basin matters. He stated that the Congo Basin matters were being dealt with by the appropriate authorities. He stated that the Congo Basin matters were being dealt with by the appropriate authorities. He stated that the Congo Basin matters were being dealt with by the appropriate authorities.

SIR CHARLES BOWRING'S SERVICES to Kenya and Nyasaland were fully reviewed in these pages. He was entertained in luncheon by the special command of British troops and surrounding districts before his departure from Nyasaland. Mr. G. G. G. presented an address of behalf of the Executive Town Council, Limbe, and the Nyasaland Chamber of Commerce, and the Corporation of Associations of Nyasaland, which would bid adieu to him.

Mr. G. G. G. presented an address of behalf of the Executive Town Council, Limbe, and the Nyasaland Chamber of Commerce, and the Corporation of Associations of Nyasaland, which would bid adieu to him. He stated that the services of Sir Charles Bowring had been of great value to the Colony of Kenya and Nyasaland. He stated that the services of Sir Charles Bowring had been of great value to the Colony of Kenya and Nyasaland. He stated that the services of Sir Charles Bowring had been of great value to the Colony of Kenya and Nyasaland.

Mr. G. G. G. presented an address of behalf of the Executive Town Council, Limbe, and the Nyasaland Chamber of Commerce, and the Corporation of Associations of Nyasaland, which would bid adieu to him. He stated that the services of Sir Charles Bowring had been of great value to the Colony of Kenya and Nyasaland. He stated that the services of Sir Charles Bowring had been of great value to the Colony of Kenya and Nyasaland.

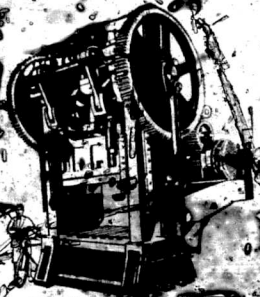
Advertisement for Ovaltine. The text reads: 'Glow with Health' and 'Ovaltine'. It describes Ovaltine as a 'Tonic Food Beverage' that is 'Built on Human Nerve and Bone'. The advertisement includes the name 'MILKMAKERS' and 'MILKMAKERS' and 'MILKMAKERS'.

There's nothing like Steel for Strength

And the only bicycle in the world built entirely of steel—no malleable iron castings, as in ordinary bicycles.

RALEIGH THE ALL-STEEL BICYCLE

With this important feature, the patent pressure brazing and many other exclusive features, the Raleigh will stand any amount of knocking about and always runs so easily that to ride it is easier than walking.



Raleigh power presses making brackets and fugs of cold-steel at a pressure of 1,000 tons.



Send for "The Book of the Raleigh"

THE RALEIGH CYCLE CO. LD., NOTTINGHAM, ENGLAND

Agents in all parts of Africa

ROSA, COMETTA BLOCK AND BRICK PRESSES

...which can be converted into ...
...yearly output ...
...day.



CONFRARIA ROSA, COMETTA & C., MILANO (126) Italy
Cable Address: "Roscometta", Milano

DUX BLACK CANVAS

Proved by Government rigid test to be specially suitable for Tarpaulins in Tropical Conditions.

Durability twice other canvases.
Absolutely waterproof, rat proof, insect proof.

Other varieties: Brown, Green, White, suitable for all requirements. Good for use in harbours, etc.
Sample on application to:
The DUX CHEMICAL SOLUTIONS Co. Ltd.,
1, Cannon Row, London, E. 3.

FRANCIS FREAKSTON LTD



LIGHT RAILWAY TRACK, WAGONS, LOCOMOTIVES
FOR SIAL, COTTON, SUGAR, ESTATE
11, OFFICE, 30, BETHEN STREET, WESTMINSTER, S.W.
Kenya Agents: DALTON & COMPANY LTD, NAIROBI

EAST AFRICA'S INFORMATION BUREAU.

East Africa's Information Bureau exists for the free service of subscribers and advertisers. The Editor said on any matter. One of its principal objects is to contribute to the development of foreign trade throughout East and Central Africa, and any information which readers are willing to give for that purpose will be cordially welcomed. Manufacturers wishing to appoint agents and agents seeking further representations, are invited to communicate with the Editor. No charge is made for the service rendered by this Journal in such matters.

The trade continues brisk in the area, according to a report received by the last mail.

The Standard Bank of South Africa has erected a new double-story building in Livingstonia, Northern Rhodesia.

The Uganda Sugar Factory, Uganda, contemplates a new output to ensure an annual output of 8,000 tons.

According to a report received by mail from Uganda, 200,000 acres of sugar are to be planted in the country during the year.

Quantities of cement were imported to Tanganyika Territory during the last month for which detailed statistics are available.

The new deep water berth at Mombasa, the inaugural ceremony in connection with which has just taken place is to be called the "Mombasa Wharf". It is 200 ft. in length.

It is estimated that Dar es Salaam hotels will be able to accommodate some 200 visitors during the week in which the Tanganyika Agricultural and Industrial Exhibition is to be held.

Messrs. J. and C. Baker and Co. (East Africa) Ltd. have removed their offices to Adelaide House, King William Street, E.C. 4. The telephone number which is unchanged, is Mansion House 6736.

The railway line between Athi and Abuhammad in the Sudan has been severely damaged by heavy storms, which have washed away the line at many points over a distance of 300 miles. The damage will take at least a week to repair.

The sisal plantation at Mombasa owned by the Tanganyika Sisal and Produce Co., the said advertisement of which appeared in our issue of May 9, has now been informed, in a sale to a local business by Mr. H. Malcolm Ross.

The cotton crop in Uganda for the past season amounts to 116,576 tons of seed cotton, or 36,300 tons above the figures for 1936. The ginning percentage to which the total crop would be 105,848 bales of 40 lb.

I.M. Eastern African Dependencies Trade and Information Office has received a cable from East Africa stating that the output from Tanganyika mines during June was as follows: Gold, 158 oz., valued at £4,345; diamonds, 1,780 carats, valued at £7,400; mica, 1,561 lb., valued at £3,051; and salt, 22 tons, valued at £1,181.

Wilson Airways Ltd., the new Kenya aviation company of which some details appeared in last week's East Africa, is, we now learn, to operate three machines, two of them with three engines. A three-engined seaplane is to do the coastal work between Mombasa, Tanga, Zanzibar, and Dar es Salaam, and a three-engined aeroplane will be used between Mombasa and Nairobi.

A committee to make a full inquiry in Kenya into the proposals involved in the proposed Bill providing for the control of privately owned motor services which are to compete with the Kenya and Uganda Railways. The Bill has been discussed throughout the Colony, it being felt that it is premature, and on all sides the necessity for further examination has been emphasised.

The Crown Agents for the Colonies are advertising for an Assistant Engineer for the Tanganyika Government Railways for a four or five years term, with a possible extension. Candidates must be between the ages of twenty-five and thirty-five years, should have had experience in railway construction and maintenance. The commencing salary will be £480 rising to £720. Applications should be made to the Crown Agents, London, N.W. 1/1037.



It's yours a Sunshine Baby

No flabby flesh, no constipation

Sunshine Babies are those happy babies who are protected by the sunshine vitamin D from rickets, badly shaped teeth, constipation and other digestive disturbances.

Give your Baby the immunity of a baby with added Sunshine Vitamin D, that's what you get with Sunshine Baby. Let the sunshine vitamin D build your baby's bones, strength and strong, to give you a healthy baby and a sunny little constitution.

Over two years medical trials in Great Britain prove the value of this New Glaxo (with added sunshine vitamin D) for infant feeding before it was placed on the market.

THE STANDARD BANK OF SOUTH AFRICA LIMITED.

Earning Progress

A splendid business and strong position. Every indication of further progress and growth.

The 11th ordinary meeting of the Standard Bank of South Africa was held on July 21st at the Non Street Hotel, E.C. Mr. William Smart presided. The Secretary (Mr. Herbert G. Hoey) having read a notice convening the meeting and the report of the directors.

The Chairman, in moving the adoption of the report and accounts, said:— I am glad to say that as far as South Africa is concerned we are under no illusion as on the whole a good crop of sheep farmers continues to make rapid headway. Improved methods are coming more generally into use and the farming is spreading north into districts hitherto considered unproductive. These quantities of wool and cases in the wool clip may confidently be expected during the next few years. Dairy farming is also benefiting, though more slowly, from the introduction of up-to-date methods.

The crop was a fair one and provided about 1,000 bags of maize and products for export. The favourable conditions existing in the farming industry have naturally led to a rising tendency in prices of land. Some districts it is feared that this upward movement of values has led the farms have changed hands at prices which cannot be justified on economic grounds.

As regards the mining industry, the value of gold production increased in 1919 over that of 1918, the output amounting to 10,358,500 ounces valued at £44,000,319. Generally speaking, prospects for the immediate future are favourable, but the further outlook will be more satisfactory after the solution of the problems concerning the maintenance of the supply of Native labour, and the growth of new economies in production to offset the rise in costs caused by the increasing depth of mines.

Diamond Production

The output of the diamond production declined from £12,725,308 in 1917 to £9,028,024 in 1919, but the latter figures do not include the important Namaqualand output, which for the year ended March 31, 1920, was valued at approximately £6,500,000 from the one digging alone, being the result of these amazingly rich alluvial discoveries. The 1919 accounts reflected another year of prosperity. Current duties were no less than £1,250,000 above the estimate, excise duties £900,000 and income tax £455,000. Consequently, instead of the estimated deficit of £1,072,000, there was a surplus of about £1,000,000.

Imported and Nyasaland business was detrimentally affected by the slump in the tobacco market. A much larger acreage in Rhodesia has been planted with tobacco this year, and the yield is expected to show a considerable decrease. It is hoped that the smaller crop will permit the gradual accumulation of the new stocks of Rhodesia tobacco which can be marketed on overseas markets. Apart from tobacco, farming possibilities in Northern Rhodesia are very good, and the next harvest is expected to be a bumper one. The field than that of last year.

It is anticipated that the production of copper in Northern Rhodesia will reach a very large total within the next few years, and the general activity of the mining industry is most promising.

In South West Africa the farming industry continues to make considerable land settlement proceeding rapidly. A satisfactory feature is a great activity displayed by the farmers, sinking bore holes, and constructing dams. Climatic conditions in the East African territories during the year were not favourable, and the effect of locusts was a much damage to crops. Fortunately, good rains have since fallen, and it is hoped that the locusts' menace may be successfully overcome.

If you will refer to the Balance Sheet in your hands you will see that the recent issue of shares has brought the subscribed capital to £1,050,000 and the paid-up capital to £1,000,000. The reserve fund has been increased by £100,000, the premium of £50,000 on the new issue of shares, over ten old shares, and the balance of £50,000 allowed the staff.

I think it is very interesting to note that the new capital has been subscribed by a large number of shareholders, and that the new capital has been subscribed by a large number of shareholders, and that the new capital has been subscribed by a large number of shareholders.

The evidence of satisfactory expansion is given by an increase of just over £2,000,000 in our deposits in the year ended March 31, 1920, and a corresponding increase in the number of customers for collection of bills for the year ended March 31, 1920, and a corresponding increase in our total billings for the year ended March 31, 1920.

When comparing the total of £21,700,150 in the Balance Sheet now presented with the figure of £19,200,000 shown in the first Balance Sheet of the year ended March 31, 1919, the year amounted to the year being an improvement of about £25,000 on last year's figures, and in view of the fact that at March 31, 1920, the money for the new shares had been earning revenue for three months only, the result of the year's operations may be regarded as highly satisfactory. (Hear, hear.)

Adding to the profits the amount brought forward from last year's accounts, we had a total of £753,567 for disposal. An interim dividend amounting to £150,000 was paid in January, and after appropriating £100,000 to working down bank overdraft account, there is available a balance of £403,567, which your directors recommend be disposed of by adding £125,000 to the per cent. bonus as before, and by the payment of a final dividend of 75 per cent. together with a bonus of 1 per share, leaving a balance of £128,524 to be carried forward.

In order to meet the growing need for banking facilities we have during the year under review established nine new branches, five sub-branches, and eight agencies, and since the close of the year four more branches and agencies have been opened. Five of the new offices are in Northern Rhodesia. The policy of your Board continues to be one of cautious progression. Africa is, and will continue to be, a most promising country of opportunities, and before prosperity can be fully established in this continent, business conditions in South Africa must be the whole satisfactory, though the custom of trading excessive credit is a most injurious effect of any sudden depression, and may possibly occur later on. It is, however, to note that the ever clouding horizon of the future, the business horizon is now fairly clear. Mr. W. K. Barnhorst seconded the motion which was carried.



Work — and Health

Work is pleasure - work is health. All you need is energy - this you will find by taking Horlick's Malted Milk. Purest milk and strengthening wheat in ready-to-digest form are the ingredients that give Horlick's Malted Milk its power to create energy.



Send 4/- in stamps for sample to J. A. WARDLE & Co. Ltd., P.O. Box 103, NAIROBI.

MACONOCHE

Herrings in Tomato
Fresh Herrings
Kippers

Appetising and Nutritious
White Maconochie Ltd., London.

W. WHITE-COTTELL'S WINE VINEGAR

THE BEST WITH THE DELICIOUS FRAGRANCE
It is equally good for pickling, salads and table use. It is aromatic, full strength and will keep in all climates and conditions.
It is short cut in the ideal Export Vinegar.
Ask us for Sample and Quotation.
WHITE-COTTELL & CO., LONDON, ENGLAND.

for unruly hair

"Vaseline" Pomade adds charm and beauty to the hair. Used daily, even stiff unruly hair soon becomes soft, smooth and glossy. "Vaseline" Pomade also helps the hair stay in place.

Inc. upon receiving kindly "Vaseline" Pomade accept no substitutes.



Vaseline Pomade

CHESEBROUGH MFG. CO., CONSUMERS STATE STREET, NEW YORK, U.S.A.

ESANOFELE

THE SURE CURE FOR MALARIA



Throughout the tropics Esanofele has proved itself during the past ten years to be the best remedy for malaria. It is both prophylactic and a cure.

East African doctors recommend and prescribe Esanofele which is obtainable in any premises.

J. A. WARDLE & CO. LTD. NAIROBI, MOMBASA AND ELDORET

REINFORCED TANNED BOOTS

BRITISH MADE THE BEST

These boots are made from the finest quality leather and are reinforced with steel plates in the soles and heels. They are made in a factory where the highest standards of workmanship are maintained.



BLACK BROWN
Gents Size 7 to 11

23/11

REINFORCED
BLACK BROWN

SEND CASH WITH ORDER or **OR SEND 5/- DEPOSIT**. Cash on Delivery or Value Payable by Post (C.O.D. or V.P.E.) through any Post Office, where this system is in operation.

Write for our post free General Catalogue of Drapers, Clothing, and Household Goods at Wholesale Prices. Orders of 25 and upwards sent free.

J. D. WILLIAMS & CO. LTD
ONE DALE STREET WAREHOUSE
MANCHESTER, ENGLAND

THE EAST AFRICAN NATIVE COSETS A SAFETY RAZOR.

THE EMPIRE SET

A popular new model at a price the Native can pay. The Dealer can sell it at 2s. and still have a handsome profit. This set comprises a GENUINE GILLETTE SAFETY RAZOR and a double edge GILLETTE BLACK 1/2s shaving edge packed in a strong metal case. It is made within the Empire and is splendid value for money.

INSIST ON
GILLETTE



HAVING
BLADES

GILLETTE RAZORS

THE BEST MADE IN THE EAST AFRICAN EMPIRE TRADE.



MADE IN ENGLAND
GILLETTE RAZORS
182, 184, Portland Street, London, W.1

MUSTAD FISH-HOOKS

O. MUSTAD & SON
OSLO, NORWAY



H. MALCOLM HOBS

ILLUSTRATIONS AND REPORTS ON RESERVES IN TANGANYIKA TERRITORY.
CUSTOMS BOARD, TANGA
CODES: R.E.C. 101-105

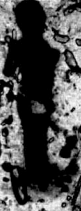
PEARSON'S DISINFECTANTS AND DIPS

For Disinfectants, Railway, Mines, Plantations, Farms and General Household Use.
LYCOL No. 1 - Germicidal value 18 to 20 times greater than Carbolic Acid. A magnificent Shiner Dip at dilutions 100 to 1,000. Guaranteed germicidal in 10 minutes.
LYCOL No. 2 - Similar to above but less highly germicidal. More active time germicidal value 10 to 100.
The Anglo-Siam Dispensing and Manufacturing Co., Ltd., Box 781, Market Street, SINGAPORE.
PEARSON'S DISINFECTANT COMPANY, LTD.
41, Mark Lane, London, E.C.3

SUBSCRIPTION FORM

THE EDITOR, "EAST AFRICA",
51, Gt. Titchfield Street, London, W.1
Please send me "EAST AFRICA" (and its supplement) (32 issues), commencing with the date and such countermanded, enclosed 5/- being first year's subscription.
Name and Address
City
Full Postal Address

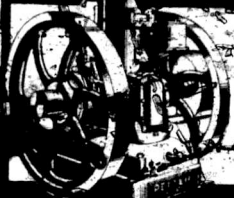
HAVE YOUR NYAGALAND TEA POSTED DIRECT EACH FRIDAY



In response to increasing demand we have now secured special consignments of Nyagaland Tea each Friday from our London Office.
Send your name to our weekly list and you may automatically receive your share of this tea.

NYAGALAND TEA COSTS ONLY 2/- PER LB.
J. STOREY, 41, MARK LANE, LONDON, E.C.3

PETTER OIL ENGINES



FOR power plants, smallest of palm oil, Extremely reliable under all conditions. The most economical power units for driving coffee grinders—especially where not readily working. All Machines, Rice Hullers, Cotton Ginned, Work with great economy and efficiency. Work with great economy and efficiency. Work with great economy and efficiency.

SIZES 11 to 240 Horse Power.

Agents: Messrs. J. STOREY, MITCHELL & CO., 80, TUNNICLIFFE STREET, WESTMINSTER, S.W.1. Agents: J. STOREY, MITCHELL & CO., 80, TUNNICLIFFE STREET, WESTMINSTER, S.W.1. Agents: J. STOREY, MITCHELL & CO., 80, TUNNICLIFFE STREET, WESTMINSTER, S.W.1.

18 B.H.P. For general imports

PETTERS LIMITED
YEovil, ENGLAND.

FRANCIS THEAKSTON, LTD.

LONDON & NEWCASTLE, BRISTOL



**LIGHT RAILWAY
TRUCK WAGONS, LOCOMOTIVES**
FOR SIAL, COY. IN SUGAR ESTATES.
80, TUNNICLIFFE STREET, WESTMINSTER, S.W.1.
Agents: J. STOREY, MITCHELL & CO., 80, TUNNICLIFFE STREET, WESTMINSTER, S.W.1.

HAVE YOUR NYASALAND TEA POSTED DIRECT EACH FRIDAY



In response to increasing demand, we have now arranged to post Nyasaland tea each Friday direct to our customers. Put us on your name, and we will list to you that you can suitably have your tea fresh each week.

NYASALAND TEA COSTS ONLY 9/3 PER LB

J. STOREY, MITCHELL & CO., 80, TUNNICLIFFE STREET, WESTMINSTER, S.W.1.
Telephone 844

For the Extra Strain!

FORT DUNLOP



The famous Dunlop Tyre of standard construction is, of course, still available.

DUNLOP RUBBER
CORP. LTD. LONDON

A NEW "Dunlop" with a yet greater reserve of strength than the famous Dunlop Tyre of Standard Construction, which you know so well. This new member of the Dunlop family has been introduced to meet particular hard service conditions. It is the choice of the motorist who habitually uses bad roads and involves his tyres in more than ordinary strains.

KENYA and UGANDA RAILWAYS AND HARBOURS



Shipping alongside Deep Water Quay MOMBASA



For information apply to

H.M. Eastern African Dependencies Trade and Communications Office, Royal Mail Building, Cockspur Street, London, or the General Manager, Kenya and Uganda Railways and Harbours Headquarters Office, Nairobi, Kenya.



SHIRTS to suit the case

whether it is going to, or
coming from, East Africa



On their journeys back to the ends of the earth, and afterwards, men wear the Viyella Shirts they buy in England. They are shirts which have been worn and washed in many of the most trying conditions through rapidly changing climates, soiling, the sun, and the most discomfort and confidence of good appearance.
It's a wonderful fabric this Viyella, fine as a handkerchief, so soft and light for skins made tender by sun and heat, and such-like tropical conditions, so undisturbingly strong. The virtue of Viyella is its unique quality of resistance, as well as absorbing excessive moisture from the body.
And Viyella is guaranteed to resist the wear and tear of fast.

BRITISH AND GUARANTEED

Viyella Shirts can be had in all the leading stores in the East. They are made in England and are guaranteed to be the best made and the most comfortable for big game hunting and safari.

There are also Viyella blouses in various weights. Always buy Viyella in the original trade mark in garment.

From Outfitters and Stores throughout East Africa.

If any difficulty in obtaining Viyella, write to Wm. Bell & Co., Ltd., 100, Strand, London, W.C.2.

Viyella Shirts

(Red Trade Mark)

His Majesty

Eastern African Dependencies

Trade and Information Office

Royal Mail Building

(Entrance in Spring Gardens)

Cockspur Street, London, S.W. 1.

All interested in
Land Settlement, Trade, Touring,
Big Game Hunting, or Prospecting in
KENYA, TANGANYIKA, UGANDA,
ZAMBIA, NYASALAND, or
NORTHERN RHODESIA

are invited to apply to the above address for the latest information.

The Commissioner will always be glad to give any assistance in his power to anyone in any way interested in Eastern Africa.

Telegrams: Eastern Westland

When writing to Advertisers, mention "East Africa" and ensure Special Attention.

Sprayer as better sprayer

in some cases it is better than the hand sprayer

MARTSMITH Sprayers

are available in many sizes and are suitable for all agricultural uses

Martsmith
Sprayer
Machine
Sprayer
Machine
Machine



Martsmith & Smith
Holliday Street, Birmingham



HERE IS A BIG ONE!

A Monkey tractor pulled, this machine cuts by the roots. Franks is a special, but it shows what this portable hand power machine will do when it comes to clearing land. It will cut your costs drastically and speed up your land clearing in a way that will please you.

Write for catalogue and full particulars

REVUE BROS. Pty., Ltd.

24, Island Rd., Haverhill, Birmingham
GILLES & ROBERTS, SINGAPORE
FRANKS & EAST AFRICA, NAIROBI
SAMUEL BAKER & Co. (Sole Agents), 100, East No. 1, Saigon
TANGANYIKA TERRITORIES

DEPENDABLE



TRUSTWORTHY

THE Trailer for hard, every-day work under exacting conditions of Colonial Cross-Country Transport



4-TON HARROW TRAILER-CHASSIS, suitable for any type of body

HARROW INDUSTRIAL COMPANY, Ltd.

Green Lane Works, South Harrow, Middlesex, England
Telephone: KILNICK, HARROW, ENGLAND

Tell your friends you saw it in 'East Africa'

...the... of the... and...
...the... of the... and...
...the... of the... and...

...the... of the... and...
...the... of the... and...
...the... of the... and...

...the... of the... and...
...the... of the... and...
...the... of the... and...

...the... of the... and...
...the... of the... and...
...the... of the... and...

...the... of the... and...
...the... of the... and...
...the... of the... and...

...the... of the... and...
...the... of the... and...
...the... of the... and...

...the... of the... and...
...the... of the... and...
...the... of the... and...

...the... of the... and...
...the... of the... and...
...the... of the... and...

...the... of the... and...
...the... of the... and...
...the... of the... and...

...the... of the... and...
...the... of the... and...
...the... of the... and...

...the... of the... and...
...the... of the... and...
...the... of the... and...

...the... of the... and...
...the... of the... and...
...the... of the... and...

...the... of the... and...
...the... of the... and...
...the... of the... and...

...the... of the... and...
...the... of the... and...
...the... of the... and...

...the... of the... and...
...the... of the... and...
...the... of the... and...

...the... of the... and...
...the... of the... and...
...the... of the... and...

...the... of the... and...
...the... of the... and...
...the... of the... and...

...the... of the... and...
...the... of the... and...
...the... of the... and...

...the... of the... and...
...the... of the... and...
...the... of the... and...

...the... of the... and...
...the... of the... and...
...the... of the... and...

...the... of the... and...
...the... of the... and...
...the... of the... and...

...the... of the... and...
...the... of the... and...
...the... of the... and...

...the... of the... and...
...the... of the... and...
...the... of the... and...

...the... of the... and...
...the... of the... and...
...the... of the... and...

Importance of the Cotton Crop
During the last five years the revenue received from Customs has generally equaled some 10 per cent of the value of the total cotton crop in the Protectorate.

Year	Total Cotton Crop (in bales)	Revenue from Customs (in £)	Percentage of Revenue to Value of Cotton Crop
1928	2,800,000	17,200,000	6.1
1929	2,700,000	16,500,000	6.1
1930	2,600,000	15,800,000	6.1
1931	2,500,000	15,100,000	6.0
1932	2,400,000	14,400,000	6.0

...the... of the... and...
...the... of the... and...
...the... of the... and...

SAA SITA TAKES OF NATIVE NICKNAMES.

Continued from "East Africa"

A TROCANYIKA Planter.

Returned from the yard, I take this load and tell that man to give it to *Iravina* (Mline).

Yes, *Iravina*, and with a few grunts Saa Sita got the load. He was a stout, stocky black of his head, and slight, dumpy of face. Some porters lay stretch on the ground, discussing their usual topics of women and food.

Here you have, taking this load to *Iravina*, *Mline* at once.

Tan Mnyamwe goes back to his house, and in a few directions from Saa Sita went, at that rapid pace he knew I was watching him.

Suddenly it struck me that I had not written a line, so going inside, I asked Saa Sita if the man knew *Buana* Mline.

Buana Mline? Oh, yes. But was not that *Buana* Mline?

Why? I asked.

Because he is a very good *buana*, replied Saa Sita. He lets the men do their work, and he does not make trouble, and which means he respects me. Also, he will do any advance work for you when a man asks *Mline*.

Do you call him *Buana* Mline because of the men in the time?

Certainly. Why not? But, at the other names, *Iravina* Mline, you know him. Issue a man.

I don't know. Saa Sita.
He must be, for a stomach like his must have cost him a lot of money to make. But he wants a big sack for a day's work. The names of the white men are hard for the people to say. They give them their own names. I have given many names

that for a long time, *Mline* for the full. I like to give one who is good, and then I remember that the white men carried a stick.

Yes, I like the *buana* because he will make in his own house, and will make.

Yes, *Iravina* Mline had a plantation near the hospital, and his men only a summer for a day's work.

Here Saa Sita started to run, but quickly resumed. *Buana* Mline makes.

Of course, all the white men. The *buana* are *Iravina* Mline, in fact, they are.

Yes, I can see he is a great man, and he is a great man, and he is a great man.

Then there was *Buana* Mline, and he was a great man, and he was a great man, and he was a great man.

What was his name? I asked.

I forgot. Saa Sita will not stand the examination, but he added bravely over the name given to a police officer, who was turned over.

Have you heard anything about *Buana* Mline? You call him *Buana* Mline, is that right?

Yes, he has a young woman, and he is a great man, and he is a great man, and he is a great man.

One of the men came running into the house, and said *Buana* Mline was coming, and she was very frightened, and locked all the doors, and then climbed up into the roof, and made a big noise with a bell.

Then her husband came, and he was a great man, and he was a great man, and he was a great man.

Buana Mline and his wife, and she was a great man, and she was a great man, and she was a great man.



THE NATIVE MARKET AT KILIMANJARO

Construction and Maintenance "Caterpillar" and Russell



Right from the start of a road building job, when stumps and boulders yield to the yard, the Caterpillar Tractor cuts through the dust and noise of construction into the days of maintenance. Its finished road gains strength and security as men, money and minutes. Caterpillar's sturdy, reliable power and speed save the time and the mud. Russell Road Builders build the road, correct design and construction, and the road is up and up-keep in lay. The same Caterpillar services both tractor and grader—start a big point!

TRUCKS & TRACTORS
CATERPILLAR TRACTOR CO.

Caterpillar Tractor Co.
THE OFFICE OFFICES, S. W. CORNER 11th & A ST. N. O. R. A.
The Caterpillar Tractor Co. is a leading manufacturer of
Heavy Combined and Caterpillar Tractor Road Machinery
Caterpillar Tractor



CATERPILLAR
TRACTOR

At least 100,000 Caterpillar Tractors are in use in the world.

East Africa in the Press

COLONIAL REPRESENTATION AT NEXT YEAR'S IMPERIAL CONFERENCE

SIR EDWARD DAVSON, Secretary of State for the Colonies, in a letter to the Colonial Office, states that the Government are anxious to secure the best possible representation at the Imperial Conference which will be held in London in 1930. It is suggested that the Colonies should be represented by a number of persons, who should be appointed by the Colonial Office, and who should be able to discuss the various questions which will be raised at the Conference. It is also suggested that the Colonies should be represented by a number of persons, who should be able to discuss the various questions which will be raised at the Conference.

The problem now before the Government is to determine the status of the Colonies at the Conference. It is suggested that the Colonies should be represented by a number of persons, who should be able to discuss the various questions which will be raised at the Conference.

The Government are anxious to secure the best possible representation at the Imperial Conference which will be held in London in 1930. It is suggested that the Colonies should be represented by a number of persons, who should be appointed by the Colonial Office, and who should be able to discuss the various questions which will be raised at the Conference.

However, in 1926 an Imperial Economic Conference was held at the same time as the Imperial Conference, and on that occasion, as a matter of course, the Colonies were not represented. It is suggested that the Colonies should be represented by a number of persons, who should be able to discuss the various questions which will be raised at the Conference.

It would seem, therefore, that the next Imperial Conference will be a very important one, and it is suggested that the Colonies should be represented by a number of persons, who should be able to discuss the various questions which will be raised at the Conference.

The Colonial Dependencies in these fields, not only Great Britain but also the Dominions, will justify the development of such matters. It may be possible that the Colonial Office should be consulted at the Imperial Conference, and that the Colonial Office should be represented by a number of persons, who should be able to discuss the various questions which will be raised at the Conference.

VIEW OF KENYA

Kenya is a very young country, and as in all young countries, the experiences of pioneer settlers have been often bitter. Every year should mean an improvement. The success of the individual is still too largely dependent on his own labour in his own soil. But a time will come when small units will combine into larger ones, so that in place of six farms all struggling independently, there will be the unit of the large development unit, and a more efficient method of development may produce a solution of the present problem of Kenya. The location of Nairobi as a

road construction is a major problem for Kenya today. A great deal has already been done, white settlement has in the last twenty years made considerable advances, but what is a real elephant track to open wide areas reclaimed from jungle forests. But which remains to be done, which can and must be done. For Kenya roads today are far inferior to those of Uganda, where conditions are not dissimilar.

Kenya has a curious history which explains its unfortunate situation. The Uganda Kenya Railway was voted by the Imperial Government in 1895 to effect direct railway communication between Uganda and the coast. The system quickly reached Nairobi, where further constructional progress was complicated by the outbreak of the Rift Valley escarpment, the summit of which is over 10,000 feet above sea-level. Before the railway could be pushed on, a base for the more difficult stage of construction had to be made, and it was made at Nairobi. Ten more suitable sites could have been selected had the pioneers instead of settling on the plain, moved about 100 or 150 miles northwards onto the foothills of the escarpment. That is the tragedy of Nairobi.

SMITH, MACKENZIE & CO.
 P.O. BOX 120, MOMBASA
 NAIROBI, KAMPALA, DAR ES SALAAM,
 ZANZIBAR, TANGA, SOA, UGANDA
**GENERAL MERCHANTS,
 STEAMSHIP CLEARING,
 FORWARDING AND EXPORT AGENTS**
 CONSIDER YOUR GOODS AND BAGGAGE TO US
BONDED WAREHOUSE PROPRIETORS
 BAGGAGE, BARRACKS AND STORES
 Tel. MACH 3

African Marine & General Engineering
 COMPANY LTD. KIMBERLEY
 Ship Repairs, Sail Making and Repairing
**OXYACETYLENE WELDING
 and CUTTING**
 Insect Well-ventilated Carpenters Shops all types of
 House and Office Furniture are made and repaired
 Electric Tinning, various machinery, implements, etc.
 Repairs of all kinds invited by communication.
 Telephone Nos. 100, 101, 102, 103, 104, 105, 106, 107, 108, 109, 110, 111, 112, 113, 114, 115, 116, 117, 118, 119, 120, 121, 122, 123, 124, 125, 126, 127, 128, 129, 130, 131, 132, 133, 134, 135, 136, 137, 138, 139, 140, 141, 142, 143, 144, 145, 146, 147, 148, 149, 150, 151, 152, 153, 154, 155, 156, 157, 158, 159, 160, 161, 162, 163, 164, 165, 166, 167, 168, 169, 170, 171, 172, 173, 174, 175, 176, 177, 178, 179, 180, 181, 182, 183, 184, 185, 186, 187, 188, 189, 190, 191, 192, 193, 194, 195, 196, 197, 198, 199, 200, 201, 202, 203, 204, 205, 206, 207, 208, 209, 210, 211, 212, 213, 214, 215, 216, 217, 218, 219, 220, 221, 222, 223, 224, 225, 226, 227, 228, 229, 230, 231, 232, 233, 234, 235, 236, 237, 238, 239, 240, 241, 242, 243, 244, 245, 246, 247, 248, 249, 250, 251, 252, 253, 254, 255, 256, 257, 258, 259, 260, 261, 262, 263, 264, 265, 266, 267, 268, 269, 270, 271, 272, 273, 274, 275, 276, 277, 278, 279, 280, 281, 282, 283, 284, 285, 286, 287, 288, 289, 290, 291, 292, 293, 294, 295, 296, 297, 298, 299, 300, 301, 302, 303, 304, 305, 306, 307, 308, 309, 310, 311, 312, 313, 314, 315, 316, 317, 318, 319, 320, 321, 322, 323, 324, 325, 326, 327, 328, 329, 330, 331, 332, 333, 334, 335, 336, 337, 338, 339, 340, 341, 342, 343, 344, 345, 346, 347, 348, 349, 350, 351, 352, 353, 354, 355, 356, 357, 358, 359, 360, 361, 362, 363, 364, 365, 366, 367, 368, 369, 370, 371, 372, 373, 374, 375, 376, 377, 378, 379, 380, 381, 382, 383, 384, 385, 386, 387, 388, 389, 390, 391, 392, 393, 394, 395, 396, 397, 398, 399, 400, 401, 402, 403, 404, 405, 406, 407, 408, 409, 410, 411, 412, 413, 414, 415, 416, 417, 418, 419, 420, 421, 422, 423, 424, 425, 426, 427, 428, 429, 430, 431, 432, 433, 434, 435, 436, 437, 438, 439, 440, 441, 442, 443, 444, 445, 446, 447, 448, 449, 450, 451, 452, 453, 454, 455, 456, 457, 458, 459, 460, 461, 462, 463, 464, 465, 466, 467, 468, 469, 470, 471, 472, 473, 474, 475, 476, 477, 478, 479, 480, 481, 482, 483, 484, 485, 486, 487, 488, 489, 490, 491, 492, 493, 494, 495, 496, 497, 498, 499, 500, 501, 502, 503, 504, 505, 506, 507, 508, 509, 510, 511, 512, 513, 514, 515, 516, 517, 518, 519, 520, 521, 522, 523, 524, 525, 526, 527, 528, 529, 530, 531, 532, 533, 534, 535, 536, 537, 538, 539, 540, 541, 542, 543, 544, 545, 546, 547, 548, 549, 550, 551, 552, 553, 554, 555, 556, 557, 558, 559, 560, 561, 562, 563, 564, 565, 566, 567, 568, 569, 570, 571, 572, 573, 574, 575, 576, 577, 578, 579, 580, 581, 582, 583, 584, 585, 586, 587, 588, 589, 590, 591, 592, 593, 594, 595, 596, 597, 598, 599, 600, 601, 602, 603, 604, 605, 606, 607, 608, 609, 610, 611, 612, 613, 614, 615, 616, 617, 618, 619, 620, 621, 622, 623, 624, 625, 626, 627, 628, 629, 630, 631, 632, 633, 634, 635, 636, 637, 638, 639, 640, 641, 642, 643, 644, 645, 646, 647, 648, 649, 650, 651, 652, 653, 654, 655, 656, 657, 658, 659, 660, 661, 662, 663, 664, 665, 666, 667, 668, 669, 670, 671, 672, 673, 674, 675, 676, 677, 678, 679, 680, 681, 682, 683, 684, 685, 686, 687, 688, 689, 690, 691, 692, 693, 694, 695, 696, 697, 698, 699, 700, 701, 702, 703, 704, 705, 706, 707, 708, 709, 710, 711, 712, 713, 714, 715, 716, 717, 718, 719, 720, 721, 722, 723, 724, 725, 726, 727, 728, 729, 730, 731, 732, 733, 734, 735, 736, 737, 738, 739, 740, 741, 742, 743, 744, 745, 746, 747, 748, 749, 750, 751, 752, 753, 754, 755, 756, 757, 758, 759, 760, 761, 762, 763, 764, 765, 766, 767, 768, 769, 770, 771, 772, 773, 774, 775, 776, 777, 778, 779, 780, 781, 782, 783, 784, 785, 786, 787, 788, 789, 790, 791, 792, 793, 794, 795, 796, 797, 798, 799, 800, 801, 802, 803, 804, 805, 806, 807, 808, 809, 810, 811, 812, 813, 814, 815, 816, 817, 818, 819, 820, 821, 822, 823, 824, 825, 826, 827, 828, 829, 830, 831, 832, 833, 834, 835, 836, 837, 838, 839, 840, 841, 842, 843, 844, 845, 846, 847, 848, 849, 850, 851, 852, 853, 854, 855, 856, 857, 858, 859, 860, 861, 862, 863, 864, 865, 866, 867, 868, 869, 870, 871, 872, 873, 874, 875, 876, 877, 878, 879, 880, 881, 882, 883, 884, 885, 886, 887, 888, 889, 890, 891, 892, 893, 894, 895, 896, 897, 898, 899, 900, 901, 902, 903, 904, 905, 906, 907, 908, 909, 910, 911, 912, 913, 914, 915, 916, 917, 918, 919, 920, 921, 922, 923, 924, 925, 926, 927, 928, 929, 930, 931, 932, 933, 934, 935, 936, 937, 938, 939, 940, 941, 942, 943, 944, 945, 946, 947, 948, 949, 950, 951, 952, 953, 954, 955, 956, 957, 958, 959, 960, 961, 962, 963, 964, 965, 966, 967, 968, 969, 970, 971, 972, 973, 974, 975, 976, 977, 978, 979, 980, 981, 982, 983, 984, 985, 986, 987, 988, 989, 990, 991, 992, 993, 994, 995, 996, 997, 998, 999, 1000

"Kodak" Photographic Products
 at the Standard throughout the World

Kodak Film
 Kodak has the same quality of film as the Kodak
 in this regard, but more so.
 You can easily see the difference in
 the world guarantee them. Millions of users attest to this.
 Kodak is the standard of the world.



Gailey & Roberts Ltd. **Gailey & Roberts Ltd.**
 Established 1904. **CHAPEL STREET** Established 1904.

**The Established
 Engineering
 Agency of Kenya**

Prospective Settlers Consult us First.

Gailey & Roberts Ltd.,
 P.O. Box 66 - NAIROBI. Phone No. 33.
 for Service and Satisfaction.

BRANCHES NAIROBI, ELDORET, UJIMA, KAMPALA AND DAR ES SALAAM.

Please mention East Africa when writing to advertisers

insist on WRIGHT'S



the soap that safeguards health

THE IDEAL TOILET AND WASHING SOAP

LENNARDS LEAD THE WORLD

FOR
VALUE

WHITE
CANVAS
SHOES



WITH TESTED
RED RUBBER SOLES

ALL BRITISH MAKE

IN GENTLEMEN'S
SIZES

The huge quantities produced and put world-wide sale make possible the offer of a really serviceable shoe at no higher price

IN LADIES
SIZES

2/3 1/2

1/1 1/2

LENNARDS LIMITED,
BRITAIN'S BEST BOOT
OVERSEAS Dept. BRISTOL, ENGL.

WRITE FOR THE LATEST CATALOGUE
AND PRICE LIST TO THE MANAGER

FORTNUM MASON FOR

TROPICAL CLOTHING & STORES

It is the RIGHT FIT at the RIGHT
PRICE and backed by Fortnum &
Mason's 200 years experience of
serving patrons overseas

GROCERIES & PROVISIONS
SHIRTS & UNDERWEAR
BOOTS & SHOES
TROPICAL
TENNIS RACQUETS
HELMETS
& MOSQUITO NETS

WRITE FOR OUR EXPERT CATALOGUE
183 PICCADILLY, LONDON

Telephone
NIGHT OPERATOR
Cables
Fortnum, London

THE READY-TO-SERVE FOODS AND DAIRY PRODUCE OF

IVEL



MAKERS OF THE FAMOUS CHOLET CHEESE

Applied for at the West of England Creameries Ltd
Head Office: YEOVIL, Somerset, England.
Export Dept: 15, Pancrunch, London, E.C. 4

ORGANISING EMPIRE AGRICULTURE.

The British Empire has the only system of government in the world that can link up research in countries with all kinds of conditions and climates. We have the finest and most complete laboratory in the world. We have the means of an organization and we have the opportunity," declared Sir Robert Greig on Thursday last in the presidential address at Pretoria to the joint Imperial Agricultural Conference. The President also said:

The nations which make up the British Empire form a political body which faces an opportunity open to no other system of government in the world. This opportunity is the possibility that by thinking thought and by organizing the acquisition and the application of knowledge, the wealth of the Empire can be greatly increased, and thereby, and necessarily, the wealth of the rest of the world will be increased also. It is a far cry to an organized Empire, but if the object is worth it, the initial step is to adopt the "view-point" described by General Smuts. With the view-point and the mental field surrounding it come the creative ideas which in the end realize the dream. What I plead for, therefore, is a "view-point." Even in the prosaic occupation of agriculture of the earth, earthy, suggest that the Imperial view-point is stimulating and creative.

If the vision is keen enough, it is covered over wide enough, the energy enduring, and the courage unflinching, it is not possible that the troops of the nations which constitute the British Empire will demonstrate the means and lead the way to that wider world government to which every generous and contented mind would look.

ENGLISH MINERS FOR N. RHODESIA

We have already started drawing miners from the North of England, and should they prove satisfactory, of which we feel fairly certain, we should gradually be found employing a fairly large English mining population in Northern Rhodesia, where they should be able to lead a healthier and better life than prevails in some of the mining centres in our own country," said Sir Edmund Davis at last week's general meeting of the Bwana M'Kubwa Copper Mining Company. He added: "We intend to leave nothing undone to make our work agreeable and their residence healthy and genial, and we hope that they will take up the positions in the country, imbued with the desire to do everything they can on their part to help in a satisfactory manner, as the only way for them to succeed will be for us all to be equally satisfied with the work they may carry out."

It is also an intention," continued the chairman of the company, "to do everything we possibly can to place orders for the very large amount of yarn we require in this country, and we hope in time that manufacturers will leave nothing undone to meet our only satisfactory prices, but to give the quickest possible delivery, which is all-important for us when considering the magnitude of our orders to the Dominion of Lancashire, the most possible date."

The annual meeting of the East African Steel Press, Inc., and the Eastern Sub Section of the London Chamber of Commerce is to be held this afternoon at 4 p.m. at the offices of the Chamber. The agenda provides for the election of a Chairman and Deputy Chairman for the coming year.

NATIVE NATIONALISM IN UGANDA.

The danger of a nationalistic movement appearing in the Springs of the Nile and the Nile Natives of Tropical Africa is a subject which has recently attracted serious attention on Mr. W. G. Kendall's visit to Uganda. The fact that the movement is known as the Amakites and that of their leader is a Hindu, Mr. Susani, who saves life, their leader is an extremist by the name of Kezekira, and the movement appears to be centred in a village called Kalagala.

The local chiefs prominent among them being Mr. Susani, have been endeavouring to enforce the regulations issued by the native Government to combat plague, which is prevalent in the Bugwezi districts. On July 20, Susani approached the village of Kezekira, summoned his followers and decided to fight. Mr. Kendall, a local chief, did his best to restrain the Amakites, arguing with them alone and unarmed for several hours.

Mr. Kendall happened to be passing along a road near the village when he was asked to protect the chief from the violence of the Amakites. Susani, however, at once, at the menacingly hostile demonstration, placed a challenge to Mr. Kendall and tried to prevent him from entering the danger zone. Kezekira precipitated a conflict by his followers, who appear at Susani, and the whole mob of Amakites rushed forward intent on murdering Mr. Kendall, who was in their aid, but was rescued by the Amakites, who tried to stab him with their spears. Susani protected Mr. Kendall and his followers were rescued from their surprise and rushed to the village of Kezekira. Enough Amakites followed the Amakites, who were scattered, but many were killed and their fled, leaving a trail of skulls on the ground, of whom five were dead, including the wife of Mr. Kendall. The Amakites used very heavy spears.

The official inquiry into the incident found the Amakites responsible for the riot, and the Amakites received a verdict of justly deserved, thus exonerating the loyal Natives. The tribute to the courage of Mr. Kendall in going to the aid of Chief Susani and to his chief, saving Mr. Kendall's life. He also praised the loyalty and orderly behaviour of the local population.

It is also an intention," continued the chairman of the company, "to do everything we possibly can to place orders for the very large amount of yarn we require in this country, and we hope in time that manufacturers will leave nothing undone to meet our only satisfactory prices, but to give the quickest possible delivery, which is all-important for us when considering the magnitude of our orders to the Dominion of Lancashire, the most possible date."

COLOURED IRISH LINEN

These also are showing wide ranges of Coloured Linens, including several new cloth weaves will give complete satisfaction. Carriage and freight free to all ports of landing on foreign and Colonial orders of £10 and up yards.

MOVING

DRY CLEANING	Woolen Dress Linen	DRESS LINEN
A medium weight linen, fully shirred, and has been tested and found to be the best for the purpose. Like the finest of the finest.	A very fine, light weight, and very beautiful for the purpose.	A very fine, light weight, and very beautiful for the purpose.

1/9 2/6 3/9

ROBINSON & CLEAVER, LTD.
The South Hall, Regent Street, London, W.1.

PUBLICAN



MAKE Your Weighing PROFITABLE

Every Platform
is quicker, more
accurate, more reliable service
like an Avery product the
200 Platform Weigher
quite so last it will stand up
to hard use plenty of it
should a breakage occur
broken parts can easily
replaced. All the compon-
ents of the 200 Platform
Weights are made to
Gauge

AVERY

AVERY LTD
SOHO FOUNDRY
BIRMINGHAM

YOUNG'S MOUNTAIN DEW

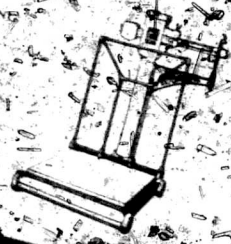
Awarded Gold Medal 1961
Grand Prix d'Angers 1960
Highest Award Nice 1957

It's A WHISKY THAT
MAKES EVERY
SCOTSMAN PROUD
of his
COUNTRY'S PRODUCTIONS

THE KENYA AGENCY LTD
17, Market Street, Nairobi

PROFITABLE POINTS

THE SELF-ADJUSTING
SHARING



IN EVERY WEIGH A PROFIT

EAST AFRICA'S INFORMATION BUREAU.

Information Bureau exists for the purpose of providing subscribers and advertisers desiring the Editor's aid on any matter. One of its principal objects is to contribute to the development of British trade throughout East and Central Africa, and any information which readers are willing to give for that purpose will be cordially welcomed. Manufacturers wishing to appoint agents, and agents wishing further representations, are invited to communicate with the Editor. No charge is made for the service rendered by this Bureau in such matters.

A Sports Club is to be formed in Mombasa.

The heaviest rains known in the Sudan for fifteen years have recently fallen.

Mr. A. K. Constantine, of Nakuru, has retired from his position on the board of Unga Ltd.

It is officially stated that the campaign against locusts has cost the Kenya Government some £20,000 to date.

It is estimated that 300 tons of native grown coffee will be harvested this year in the Masaka district of Uganda.

A new handbook on Uganda is in preparation for distribution by H. M. East African Dependencies Office in London.

A prospecting syndicate has been formed in Belgium to investigate the possibilities of exploiting oilfields in Uganda-Urundi and on the shores of Lake Tanganyika.

The Gilgil-Thomson's branch line of the Kenya and Uganda Railway, which was opened for traffic on the 1st of the month, is 127 1/2 miles long and is estimated to have cost £18,000.

A number of South African Dutch farmers in the Nanyuki district of Kenya are reported to be contemplating settlement in Northern Rhodesia, to which Protectorate they intend trekking at an early date.

The Kenya Government announces that during the last three years eight heads of departments have reached the age of fifty and have been allowed to extend their terms of service; two of them are to retire this year.

104,838 tons of export traffic were loaded to the coast over the Kenya and Uganda Railways during the first four months of the year, representing an increase of 47% over last year's figures for the corresponding period.

A sole prospecting licence has been issued to Nyasaland Minerals Ltd. giving them the exclusive rights to prospect Crown land in Nyasaland until the end of this year, with the option of a renewal for a further period of six months.

The Governments of Northern and Southern Rhodesia and the Rhodesia Railways have now been informed, booked space at the Ideal Holiday Exhibition which is to be held in the Royal Agricultural Hall, London, from June 20 to July 3 next year.

Week-end Telegrams will henceforth be sent to East and West Africa from Great Britain and the Irish Free State to the following countries: Zanzibar (except Pemba) (minimum charge for 100 words), 8s. 4d.; Kenya (minimum charge for 100 words), 10s.

The Hill School, Miumu, a preparatory school for European girls now closely identified with the Church Missionary Society, is being enlarged to accommodate sixty pupils, and it is expected that the new building will be ready for occupation in September.

At the annual conference of the Uganda Planters' Association Mr. N. D. Allen said that the Coffee Board was investigating the methods used by Brazil in marketing and grading coffee. It was their intention to ask Government for legislation for the compulsory grading of all Native coffee.

During the first four months of this year trade imports into Tanganyika Territory totalled £1,258,044, of which Great Britain's share was only 35%, compared with 40% in the corresponding period of last year; India's share, on the other hand, increased in the same period from 10% to 15%.

Home consumption of imports into Kenya and Uganda during the first quarter of this year totalled £2,285,739, compared with £2,265,920 in the corresponding three months of last year. Great Britain's share this year has fallen from 36% to 35%, but that of the U.S.A. has increased from 13 1/2% to 14%, that of France from 2 1/2% to 3% and that of Germany from 1 1/2% to 2%.

The Tanganyika Congress of Associations protested strongly at its recent session against the misstatements contained in the Report of the Commission on Closer Union that the southern areas of the Territory could be more easily reached from Zomba than from Dar es Salaam, and resolved to oppose firmly any suggestion of transfer of any area in any part of Tanganyika Territory to another Dependency.

MAKE YOUR OWN SODA WATER

at 1d. per Dozen Large Bottles on the

FLUGEL'S

AERATED WATER MACHINE

Purify assured

FLUGEL'S MACHINE, B. Fills, Syrups and Crowns under Pressure.

For Canteehs, Regimental Messes, Hospitals, Clubs, Upcountry Stations.



FLUGEL & Co. (London) Ltd.

THE EAST AFRICAN TRADING AND INDUSTRIAL COMPANY

General Meeting

General Meeting

The Chairman reported on the adoption of the report and accounts...

The Chairman

The year under review has been one of considerable difficulty... The gross overall selling price of 1927 was 23s. 8d. per ton lower than 1926...

I think it well to draw your attention particularly to the fall which has taken place in the last three years on the selling price of sisal...

Before I deal with each Estate in detail I will first of all refer to some features of our accounts and finance...

Finance

Table with 2 columns: Description and Amount. Includes items like 'Profit for 1927', 'Dividend for 1927', etc.

You will observe that the sinking fund for the redemption of the debentures outstanding has been still further increased...

I should like to draw your attention to our Development Redemption Fund, which now stands at the very high sum of £50,810s. 3d.

You will have noticed that during the last few years the company has secured its indebtedness by repayment of debentures and provided equipment on all Estates...

The Individual Estates

I am going to the question of the individual estates and the only one production was made for the whole of the year...

great disappointments... about to embark on the new order for sisal... I am glad to say that production is now in full swing...

We have not had any serious trouble with the machinery of the estate... The new steam engine and boiler at Masongoleni...

We were very pleased to be advised that the company won the first prize for No. 1 sisal at the Kenya Agricultural Show held in October, 1927...

The Year's Development

With regard to our development last year, I add not without this in the light of the difficulties experienced then and those which have supervened since...

The Secretary paid a brief visit to the estates in January and was accompanied by the consulting engineer...

We are following very closely the experiments under the observation of the Imperial Institute which are being carried out in salt water with regard to the sisal...

We are advised that heavy damage has occurred to the company's sisal from the locust infestation...

Outlook for the Present Year

In regard to the present year we are already indicated, passing a vigorous development programme on all the plantations...

NEWSPAPERS



HACHETTE'S SUBSCRIPTION AGENCY (E.A.)

The Largest Newspaper Distributing Enterprise in the World.

ESTABLISHED 1826.

SUBSCRIPTIONS TO NEWSPAPERS AND PERIODICALS OF ALL COUNTRIES

The best way to keep in touch with the happenings of Home is to take the apt to you journal paper.

HACHETTE'S GIFT BOOK

Send for the latest issue of the Hachette's Gift Book immediately the subject of your interest is advertised. The name and terms of subscription are given.

ENGLISH AND EUROPEAN THOUGHT

finds expression in books. You can supply these simply in any European language, and specialise in books for language teaching. Ask for Catalogues mentioning language and class of book desired.

HACHETTE'S SUBSCRIPTION AGENCY (E.A.)

16-17 & 18, King William Street, London, W.C.2, England

DUX-COFFEE SHIELDS

PROTECT YOUR YOUNG COFFEE PLANTS AGAINST CUT WORMS.

Recommended by Director of Agriculture.

The DUX-CHEMICAL SOLUTIONS Co. Ltd., Bromley-by-Sea, London, E.3.

Agents holding stock in Kenya: J. W. MILLIGAN & Co., Harding Street, Nairobi.

A High-Grade Pump at Reasonable Price

Standard 100 Gallon capacity and output. Efficient, reliable, and offered at a moderate price. Only 100 lbs. weight. Gives you full performance and information.

SOLOVANE Centrifugal PUMPS



SOLE AGENTS: MANCHESTER & CO. LTD.

East Africa is one of the most valuable assets towards the development and expansion of Eastern Africa. A leading East African business man.

ESANOFELE

THE SURE CURE FOR MALARIA



Through-out the world, Esanofele has proved itself during the past years to be the best remedy for malaria. It is both a prophylactic and a cure. East African doctors recommend and prescribe Esanofele, which is obtainable from any chemist.

Sole Distributors: A.H. WARDEE & CO. LTD. NAIROBI & ELDORET.

THE SUDAN

A Perfect Winter Resort

Khartoum. At 1,200 feet above sea level, enjoys an ideal winter climate. Constant sunshine, tempered by invigorating breezes, acts as a rapidly effective tonic to those in search of health and pleasure.



Khartoum is a modern town with handsome buildings and gardens along the banks of the Nile. The Grand Hotel is under management of the Sudan Railway and Steamers Dept.

SOURMAN, the wonderful African Metropolis, contrasts with all that is most characteristic of a native life. It lies near by, reaching for 100 miles along the shore of the great Nile. Early evening sports, football and tennis are here appreciated practising their art and crafts in the markets.

The Sudan Government Railways and Steamers Dept. is one of the most easily accessible services in which Big Game stands, and the large territory offers a most varied choice of shooting grounds.

BIG GAME SHOOTING

Sudan Government Railways and Steamers, Wellington House, 20, LANGHAM PLACE, LONDON, S.W.1.

SHIRAZI CATHEDRAL BUILDING FUND

First list of London Donations

First Office is able to announce that Major Corbett Ward, the Honorary Treasurer in this country for the Shirazi Cathedral Building Fund has received the following contributions:

H.R.H. the Prince of Wales	100 0 0
C. M. Botley, Esq.	10 0 0
The Dean of Exeter	10 0 0
G. F. Ingleden, Esq.	10 0 0
D. M. Gault, Esq.	10 0 0
Mrs. Amy L. Phelps	10 0 0
The Misses Harman	10 0 0
H. C. Banton	10 0 0
Mrs. Banton	10 0 0
Sheffield Cathedral, in recognition of a contribution	10 0 0
Frank H. Jackson, Esq.	10 0 0
Sir Neville Pearson, Bt.	10 0 0
Standard Bank of South Africa Ltd.	10 0 0
Rev. W. P. L. the Archbishop of Ankuruli	10 0 0
His Honour C. Justice J. Kerling	10 0 0
Colonel R. F. Harris, D.S.O.	10 0 0
Lt. Col. R. P. Collins, D.S.O.	10 0 0
Charles F. Wood, Esq.	10 0 0

Total to date £283 10 10

SENA SUGAR ESTATES REPORT.

Year's Profit of £71,664.

The ninth ordinary general meeting of Sena Sugar Estates Ltd. is to be held at 10.30 p.m. to-day at the Cannon Street Hotel. The accounts for the year ending December 31, 1928, show a profit of £71,664, from which, however, no dividend is to be paid on the Ordinary Shares. The total crop for the year was 63,236 tons of sugar, or 1,026 tons over the 1927 figures, but the average selling price was £2 per ton lower. 33,100 acres of cane are to be cut in 1929, compared with 27,940 acres in 1928. An interesting note is that the whole of the company's molasses, hitherto a waste product on account of lack of transport facilities, has this year been sold.

The company issued £1,000,000 in primary shares and £300,000 in Participating Preference Shares. Outstanding total £704,000. The properties are mortgaged. Debentures are also issued. The balance sheet shows estates, mills, &c. £2,095,200. Cane Marketing Railway, £202,746; over and above £1,019,051 of convertible preference shares of an associated company. £4,700,000.

ONE WEEK'S RAINFALL IN KENYA

Kenya has received an unusually large amount of rain during the past week, and the rainfall for the week includes Matindani, Mandera, Malindi, Lamu, Mombasa, P. M. P. M., and other places. Mombasa, Malindi, and Lamu, which are the most fertile, had a very heavy rain, and the crops are in a very good state. The rainfall in the past week was a considerable improvement on the agricultural prospects, and a considerable improvement in consequence.

NEWS OF OUR ADVERTISERS.

East Africa agents of Messrs. T. R. Elin Ltd., Sheffield, can now obtain on application to that well-established company envelope type advertising their fold pens and their wrought steel portable tube vices. Both of these lines have a firm place for themselves in tropical markets.

Messrs. Winget Edd have just produced a new series of concrete mixers mounted as roadless traction units for use in such territories as East and Central Africa, and have also added new models to their range of open drum mixers which are now available in some forty different sizes. The illustration on this page shows one of the new machines, specially designed for roadless traction.



CONCRETE MIXER FOR ROAD ROAD WORK

Telegrams & Cables:
STORAGE
MOMBASA

Telephone:
A.B.C. 5th Edition.
Bentley

P.O. Box
Mombasa

Mombasa Bonded Warehouse Co., Ltd.

General Shipping, Forwarding, Customs Clearing,
Insurance and Passenger Agents

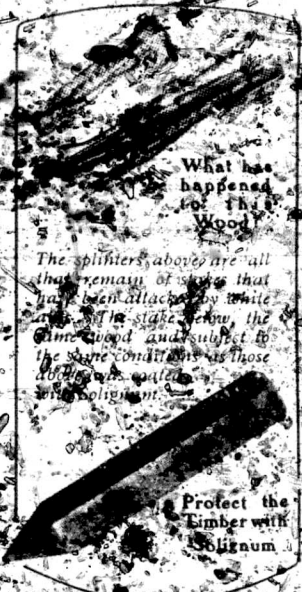
LARGEST BOND & FREE STORAGE IN AFRICA

Sidings from Kisumu Station to Godowns

Forward your Bills of Lading to us for careful and prompt attention

RAIL YOUR EXPORT PRODUCE TO US

Solignum versus White Ants



Dear Sirs,

It may interest you to know that I heard from Kenia, East Africa, stating that he recently was comparing your Solignum on my poultry house. When the conversation happened it turned to the preservation of wood. I found out there was a well known carpenter from Kenia that the only satisfactory method he had discovered of treating framing posts was with Solignum. These white ants would not touch, whereas they speedily destroyed all other wood.

You are asked to write to me to believe if you wish to see the Solignum treated Kenia Poultry House.

Heathfield, Sussex

Solignum soaks well into the wood protecting it against attack by insects or decay. The treatment is simple and inexpensive and allows timber to be used for any purpose without fear of loss through insect or decay.



THE WOOD PRESERVATIVE

Agents, Messrs. Messers. Messers. & Roberts, Ltd., Nairobi, E.A.

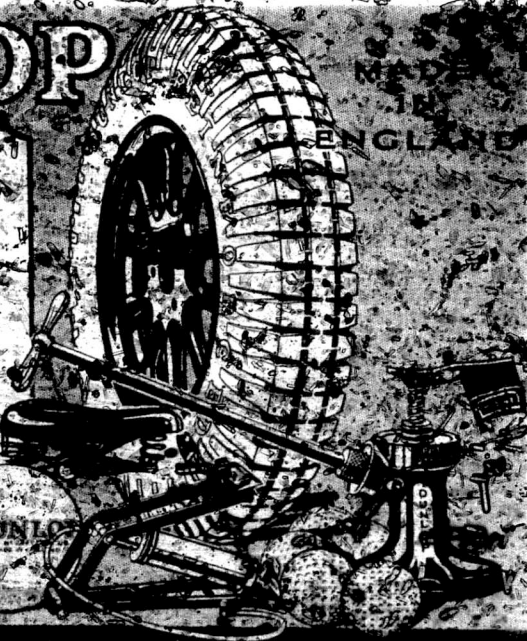
SOLE MANUFACTURERS AND EXPORTERS
SOLIGNUM LIMITED
10, Abchurch Lane, Street, London, E.C. 4, England

DUNLOP

MADE IN ENGLAND

TYRES
GOLF BALLS
TENNIS BALLS
SADDLES
ACCESSORIES

The name is your safeguard



C.F.H. 160

Please mention East Africa when writing to the advertiser

His Majesty's

Eastern African Dependencies

Trade and Information Office

Royal Mail Building

(Entrance in Spring Gardens)

Cockspur Street, London, S.W.

All interested in
Land Settlement, Trade, Tourist
and Game Planning, or Prospecting
KENYA, TANZANIA, UGANDA,
SOMALILAND, NORTHERN RHODESIA

are invited to apply to the above address for the latest information.

The Commissioner will always be glad to give any assistance in his power to anyone in any way interested in Eastern Africa.

Telephone: (Regent) 5701, 2, 3.

Telegrams: "EastAfrica, Western."

KENYA and UGANDA

RAILWAYS and HARBOURS

Offer access to the wonderful resources of the country to the

TOURIST SPORTSMAN SETTLER

ENFRANCHISING
SCENERY of the
KENYA HIGHLANDS

The Great
RIFT VALLEY
and LAKE DISTRICTS



Easy access to
MOUNTS KENYA,
KILIMANJARO,
ELGEYO,
BUNENZORI

LAKE VICTORIA
and the NILE

Sheela Pass, Kenya Colony

A Country where variations of altitude result in every degree of temperate climate, and every form of production, which prove interesting and worthy of close inspection.

For information apply to

H.M. Eastern African Dependencies Trade and Information Office, Royal Mail Building, Cockspur Street, London, S.W. General Manager, Kenya, Uganda Railways and Harbours, and Information Office, Nairobi, Kenya.

OUR FREE SERVICE FOR READERS

To save our readers time, trouble, and money East Africa will gladly have catalogues and other information sent to them concerning any of the following. Tick the items that especially interest you.

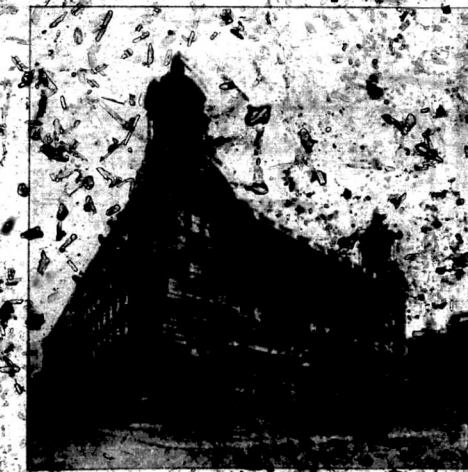
- | | | |
|-------------------------|-----------------|------------------------|
| Agricultural implements | Household goods | Books |
| Headlamps | Ironing man | Safety caps & blades |
| Balloons | Insulators | Sardines |
| Boots and shoes | Light stoves | Sisal Decorticators |
| Books | Light stoves | Sports goods |
| Books | Light stoves | Spraying machinery |
| Books | Light stoves | Shoes for tropics |
| Books | Light stoves | Tire mending apparatus |
| Books | Light stoves | Tarpaulins |
| Books | Light stoves | Tea lead and chests |
| Books | Light stoves | Tea sifting machinery |
| Books | Light stoves | Teletype equipment |
| Books | Light stoves | Toys |
| Books | Light stoves | Tractors |
| Books | Light stoves | Trailers |
| Books | Light stoves | Tires |
| Books | Light stoves | Typewriters |
| Books | Light stoves | Weighing machinery |
| Books | Light stoves | Wireless apparatus |
| Books | Light stoves | Wire ropes |
| Books | Light stoves | Wood preservatives |

Send your name and address to the Editor, East Africa, P.O. Box 100, Nairobi, Kenya. Tick the items that interest you. All postal orders.

HUDSON RAILWAY MATERIAL FOR EVERY RAILWAY REQUIREMENT



ENGINEERS AND CONTRACTORS
 RAILWAYS, ESTABLISHMENTS, TRACKS AND ALL ACCESSORIES
 STEAM, DIESEL & ELECTRIC
 WRITE FOR CATALOGUE & ESTIMATE
ROBERT HUDSON LIMITED
 HEAD OFFICE 38, BOND STREET, LEEDS
 WORKS: BRIDFORD, LEEDS, ENGLAND



LIVERPOOL COTTON ASSOCIATION

Liverpool - The Greatest Spot Cotton Market in the World.

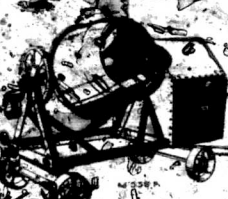
Members of this Association offer facilities for the Sale, Purchase and Finance of every Growth of Cotton.

THE WORLD FOLLOWS LIVERPOOL COTTON QUOTATIONS. Growers and Shippers should send their Cotton to Liverpool.

All information may be obtained from the Secretary of the Association.

When writing to advertisers mention 'East Africa' and ensure special attention.

**STRONG!
SIMPLE!
- SPEEDY!!**



**THE ONLY GOOD WIN
WITH A DRAIN OILER**
This simple and rugged motor vehicle is fitted with a drain oiler which automatically drains the engine through a roller chain drive. Simple and it can be operated by anyone. A small motor vehicle with a big power.

Goodwin Motor Vehicle Co., Ltd.
MILTON ROAD, BRISTOL, ENGLAND



**PARKER PRODUCER GAS PLANTS
MOTOR TRANSPORT AND TRACTOR WORK
(BURNING MADE THROUGHOUT)**

**FORDSON TRACTOR PLANTS
WITH
PARKER CYLINDER HEADS**
(Provisionally Patented)
LOSS IN POWER ENTIRELY OBIVIATED

**COMMON CHARCOAL FUEL
BURNING COSTS EXCESSIVELY REDUCED**

PRODUCER
GAS
PLANTS



CYLINDER
HEADS

**PARKER CYLINDER HEADS ENSURE THE POWER
OBTAINED BY PRODUCER GAS. NO OTHER
SYSTEM CAN EVER APPROACH THESE RESULTS**

FUEL COST COMPARISONS
1 Hour's Running on the FORDSON TRACTOR (cost of 10 hours work with
cost approximately) 4 1/2 gallons of petrol
2 1/2 gallons of producer gas - 4 1/2 gallons of petrol
2 1/2 gallons of producer gas - 4 1/2 gallons of petrol

**EACH FITTED AND OPERATED BY AN ENGINE
EXPERT. KNOWLEDGE IS NOW REQUIRED.
ECONOMY, EFFICIENCY, SAVING.**

**PARKER PRODUCER GAS PLANT CO.,
25, Conduit Street, London, W.1.
On the Telephone - Regent Palace Hotel**

**Your work calls
for health, strength
and stamina**

**10 minutes' Easy
Strength**

High energy, strength and stamina are essential for health, happiness and success. You can get them by taking 10 minutes' Easy Strength every day. It is a simple, easy, and effective way to build up your strength and stamina. It is a natural, healthy, and safe way to improve your health and vitality.

**100% Satisfaction
Cyclist and Motor-cyclist**

100% Satisfaction Cyclist and Motor-cyclist. It is a simple, easy, and effective way to build up your strength and stamina. It is a natural, healthy, and safe way to improve your health and vitality.

ROBERT TAYLOR & SONS, LTD.

Research, England
Factory, 100, Tottenham Road, London, E.2
100, Tottenham Road, London, E.2



**Glorious
Health**

To get glorious health and vitality, eat Ovaltine with breakfast instead of tea, coffee, or cocoa, as a morning beverage and fast food at night to ensure peaceful slumber.

Do not forget to compare with "Ovaltine" for building up muscle, guarding that priceless quality - **YOUR HEALTH**. Here is the reason -

One cup of "Ovaltine" supplies more health-giving nutrients than a cupful of beef tea or 1 egg.

"Ovaltine" is the best daily food beverage for people of all ages. Doctors and fast-growing children, busy mothers, inveterate busy workers, athletes, and those aged to 90 can use it to build up power from "Ovaltine" - gain from the most health-giving treatment.

OVALTINE

IONIC FORMULA

Builds up Brain, Nerves, and Body

Prepared by Anglo-Siam Corporation, Ltd., London, E.C.4
Solely for the Eastern Hemisphere by Anglo-Siam Corporation, Ltd., London, E.C.4