

EAST AFRICA

THE ONLY NEWSPAPER IN EUROPE DEVOTED
EXCLUSIVELY TO THE INTERESTS OF
THOSE LIVING, TRADING, HOLDING
PROPERTY OR OTHERWISE INTERESTED IN
EAST AND CENTRAL AFRICA.
A WEEKLY JOURNAL

Vol. 1 No. 250

THURSDAY, AUGUST 27, 1920

Annual Subscription
Post Free

Price 6d.



BRITISH INDIA LINE

REGULAR SERVICE, MURDAN AND MESSHETS TO AND FROM EAST AFRICA

Direct line between East and West Africa, carrying first and second class passengers.

FAST MAIL AND PASSENGER SERVICE: BOMBAY, KILIMINDIO, MURDAN

Regularly to East Africa Coastal Ports, also calling at Swakwena, Bulawayo, etc.

EAST AFRICAN LOCAL SERVICES—M.V. 'SUNDA' AND M.V. 'DWARAKA'

Coasting with other Services and providing frequent facilities at anchor ports and harbours of the Home Isles and West Coast.

For full details and attractive Booklets etc.

Agents: F. & O. HOBBS 11, COCKSPURRIE STREET, N.W.1.

GRAY, DAWES & CO'S 27, LEADENHALL ST., E.C.3.

Freight: HULLATT, HANBY & CO. LTD. DOCK ROAD, BILSTED BY, N.C.3.

Schweppe's

DRY GINGER ALE
SODA WATER TONIC WATER
GINGER BEER, ETC.



These celebrated waters are supplied at all first class hotels, clubs and stores throughout the world.

Agents: Messrs. J. & F. G. W. H. G. & Co. Ltd.
Schweppe's Ltd.
Marble Arch House London W.2

TRUCKS EQUIPMENT, KIT, & SPARE PARTS	INSURANCE OF ALL KINDS UNDERWRITTEN ON BASIS OF MUTUAL AGENCY
ROTOR CARS SPEED 60 NO PURCHASE TERM	ROTOR CARS EXCHANGED RENTED, BONA FIDE
SPECIAL FACILITIES FOR PAYMENTS BY BANK OF AUSTRALIAN BANKING	
GRIFFITHS & WILKINSON, LTD. LIVERPOOL LONDON	

PARKER PRODUCER GAS PLANTS
 FOR MOTOR TRANSPORT AND TRACTOR WORK
 MADE THROUGHOUT THE WORLD

FORDSON TRACTOR PLANTS
PARKER CYLINDER HEADS
 LOSS IN POWER ENTIRELY OVIATED

GREATER EFFICIENCY FUEL
 CONSUMPTION CONSIDERABLY REDUCED

PRODUCER
 GAS
 PLANTS



CYLINDER
 HEADS

STEEL CYLINDER HEADS INSURE THAT POWER
 OBTAINING FROM GAS BY PARKER WILL BE
 OBTAINED UNDER PRODUCER GAS. NO OTHER
 SYSTEM WILL EVER EXCEED THESE RESULTS.

FORDSON COMPANIONS

Small tractors of the FORDSON type are the most popular
 in the world and are available in the following sizes:

25 H.P. tractor	25	30 H.P. tractor	30
35 H.P. tractor	35	45 H.P. tractor	45
55 H.P. tractor	55	75 H.P. tractor	75

EASILY FITTED AND OPERATED BY ANYONE
 EXPERT KNOWLEDGE IS NOT REQUIRED.
 HIGHLY EFFICIENT BURNING OF ALL TYPES OF FUEL

PARKER PRODUCER GAS PLANT CO.
 12, Connaught Street, London W.1
 Agents: Parsons, London Telephone: Roper 5150 13 Bank

**OUR FREE SERVICE
 FOR READERS**

If you ever have any trouble, and need
 information, you will have, we believe, and offer
 information that is of the greatest value of the
 following. The one thing that is of the greatest value to you

- | | | | | | | | |
|------------------|------------------|------------------|------------------|------------------|------------------|------------------|------------------|
| Agriculture | Automobiles | Boats and yachts | Concrete blocks | Construction | Electricity | Gas | Household linen |
| Boats and yachts | Boys' and girls' | Boys' and girls' | Boys' and girls' | Boys' and girls' | Boys' and girls' | Boys' and girls' | Boys' and girls' |
| Boys' and girls' | Boys' and girls' | Boys' and girls' | Boys' and girls' | Boys' and girls' | Boys' and girls' | Boys' and girls' | Boys' and girls' |
| Boys' and girls' | Boys' and girls' | Boys' and girls' | Boys' and girls' | Boys' and girls' | Boys' and girls' | Boys' and girls' | Boys' and girls' |
| Boys' and girls' | Boys' and girls' | Boys' and girls' | Boys' and girls' | Boys' and girls' | Boys' and girls' | Boys' and girls' | Boys' and girls' |
| Boys' and girls' | Boys' and girls' | Boys' and girls' | Boys' and girls' | Boys' and girls' | Boys' and girls' | Boys' and girls' | Boys' and girls' |
| Boys' and girls' | Boys' and girls' | Boys' and girls' | Boys' and girls' | Boys' and girls' | Boys' and girls' | Boys' and girls' | Boys' and girls' |
| Boys' and girls' | Boys' and girls' | Boys' and girls' | Boys' and girls' | Boys' and girls' | Boys' and girls' | Boys' and girls' | Boys' and girls' |

We are also able to offer you the latest in books, and
 also, we are able to offer you the latest in books, and
 also, we are able to offer you the latest in books, and
 also, we are able to offer you the latest in books, and

Write to us for our free service, and we will
 send you the information you need, and we will
 send you the information you need, and we will
 send you the information you need, and we will

Successful Transportation

Carriage of fragile goods or passengers, independent of
 large extension the type of road fitted to the vehicle.



DUNLOP
 GIANT PNEUMATIC TYRES

absorption of road shocks at the point of their origin,
 giving protection to the engine, and a lengthened
 chassis life, maximum comfort for the passengers, in-
 creased radius of action due to the higher speed, im-
 proved fuel economy, and all-round lessening
 of running costs due to the better protection of the
 vehicle from vibrations.



His Majesty's

Eastern African Dependencies Trade and Information Office

Local Mail Building
Cockspur Street, London S.W. 1

All interested in
East African Affairs, particularly
the Great Britain or Colonies in
**KENYA, TANZANIA, UGANDA,
SOMALIA, MALAWI,
NORFOLK ISLANDS**

are invited to apply to the above office for the latest information.
The Commission will be glad to give any assistance in its power to anyone
interested in Eastern Africa.

Telephone: 8320-8321

Telex: 2522 Eastern Africa

THE **KENYA and UGANDA** RAILWAYS and HARBOURS Offer access to a wonderful country which appeals to the **TOURIST SPORTSMAN SETTLER**

ENTRANCING
SCENERY of the
KENYA HIGHLANDS

The Great
RIFT VALLEY
and **LAKE DISTRICTS**



Full access to
**QUINTESSENCE
KILIMANJARO
ELTON and
BUSIRI**

LAKE VICTORIA
and the **NILE**

*Handiest
thing in the
house*



for Cuts
Burns
Wounds
Scalds

Vaseline

TRADE MARK
PETROLEUM JELLY
DEALERS WRITE FOR PERMIT TO
CHESEBROUGH MFG. CO.
NEW YORK, N. Y.
BRANCHES AT
LONDON MONTREAL ST. PETERSBURG

ESANOFELE

THE SUB
QUIE FOR
MALARIA



It is well known that the malarial parasite is transmitted by the mosquito. The only way to prevent the disease is to destroy the mosquito. Esanofele is a powerful and effective malarial prophylactic and a specific cure for the disease. It is a powerful and effective malarial prophylactic and a specific cure for the disease. It is a powerful and effective malarial prophylactic and a specific cure for the disease.

A. H. WARDLE & CO. LTD.
RAJAHMUNDRAM AND BOMBAY

**ROSACOMITA
BLOCK AND BRICK PRESS**

It is the most perfect and efficient machine for making blocks and bricks. It is the most perfect and efficient machine for making blocks and bricks. It is the most perfect and efficient machine for making blocks and bricks.



ROSA COMITA S.p.A. - Via S. Pietro, 10 - Genova, Italia

**HUDSON
LIGHT RAILWAY
EQUIPMENT**



ROBERT HUDSON LTD.
38, BOND STREET, LONDON, W.1

Kodak Photographic Products
set the standard throughout the world

Kodak
 The original daylight printing paper
 Every sheet has the name "Kodak" on the back
 Every sheet thoroughly tested at the Kodak
 Works in three grades of finish - **Normal**
 Different details

Kodak
 The original Roll Film
 Each roll is separately packed in a special
 container in which it is stored and contains
 for 6-12 months. **FD-11** is the dependable film in
 the Yellow Cartons



Do not rely on "Kodak" Products
 unless you are certain of their quality. Kodak Photographic Laboratories in
 the World guarantee them. Millions of users attest their quality.

African Marine & General Engineering
 COMPANY, LTD., Kilindini
 Ship Repairing, Saw Making and Repairs
 Moulding
OXY ACETYLENE WELDING
 and CUTTING
 All types of welding, cutting, etc. all types of
 hydraulic and pneumatic tools made and repaired
 Estimates and specifications supplied free of charge
ESTIMATES GIVEN
 Telephone to: 100, Upper Street, ANGLO-MOMBASA
SMITH, MACKENZIE & CO., General Manager

SMITH, MACKENZIE & CO.
 P.O. BOX 126, MOMBASA
 Sole Agents
ANGLO-MOMBASA STEAMSHIP CO.
GENEVA STEAMSHIP CO.
GENERAL MERCHANTS
STEAMSHIP CLEARING
FORWARDING AND EXPORT AGENTS
CONSOLIDATED TRADING CO.
BONDED WAREHOUSE & EXPORTERS
ALL GOODS CLEARED AND STORED
SMITH, MACKENZIE & CO.

Galley & Roberts Ltd. **Galley & Roberts Ltd.**

The Established
Engineering and
Agricultural House of Kenya

The first and best of our
 steam engines, pumps, etc.
 and the most reliable
 which is found in the
 world of Agriculture

Prospective Sellers Consider

Galley & Roberts Ltd.

100, Upper Street, ANGLO-MOMBASA
 BRANCHES: NAIROBI, MOMBASA, MURURU, MUMBAI AND DAR ES SALAAM

Best Africa... will give you price

PORT OF LEITH TRAFFIC

New reports for 1914

COMMERCIAL ITEMS FROM JAPAN

New reports for 1914

THE SINO-KAFUR CUT OFF

Commercial relations between

EAST AFRICAN SECTION BEARING

PHOENIX BROKEN INTO OPTIMISM

PHOENIX BROKEN INTO OPTIMISM
The Phoenix, a well-known
and respected
company, has
applied for
this com
pany's
course

2,500,000 gallons
of water



Braithwaite
& Co. Ltd.

Waterbury, Pa.

*Delicate Children
and Invalids need*

VIROL

For NERVES and
SLEEPLESSNESS

**VIROL
AND
MILK**

**WHITE-COTTLE'S
MALT VINEGAR**

THE ONLY MALT VINEGAR IN THE U.S.A.
MADE FROM PURE MALT

WHITE-COTTLE'S MALT VINEGAR

**GRANT'S
OATMEAL**

A glorious chance
for your Baby

NEW HEALTH FOR BABY NEW HOPE FOR MOTHER

Over two years' medical trials in Great Britain proved the value of this New Glaxo (with added sunshine vitamin D) for infant feeding before it was placed on the market.

THE EAST AFRICAN NATIVE COVERTS & SAFETY RAZOR

THE EMPIRE SET

A pocket set of metal articles, which the natives of the Empire can use, and which they are proud to possess. The EMPIRE SET consists of a Gillette SAFETY RAZOR and a double edge Gillette BLADE (two sharp edges placed in a strong metal case. It is made in the Empire and is a splendid gift for any

THIRST OF
GILLETTE

HAVING
BLADES



GILLETTE RAZORS

THE SAFETY RAZOR OF THE EAST AFRICAN NATIVE COVERTS



MADE IN CANADA

GILLETTE SAFETY RAZOR, Ltd.
181 & 183 Great Portland Street, London, W.1

RELIABLE LEATHER BOOTS

BEST MADE IN ENGLAND

Boots are made from the best quality leather and are made to order. They are made in the Empire and are a splendid gift for any



BLACK or BROWN

28/41

PER PAIR

RHINA BLACK
KORINA BROWN

SEND CASE WITH ORDER

OR SEND TO

D. WILLIAMS & CO. LTD.
THE GREAT STREET, WARRINGTON
MANCHESTER, ENGLAND

MUSTAD FISH-RODS



MALCOLM ROSE

EVALUATIONS OF REPORTS ON ALL THE
TERRITORIES OF THE EAST AFRICAN NATIVE COVERTS

DARLINGTON'S HANDBOOKS

Nothing better could be wished for...
The Handbook for the...
The Handbook for the...
The Handbook for the...

SUBSCRIPTION FORM

THE EAST AFRICAN & ORIENTAL ADVERTISER
10, Abchurch Lane, London, E.C. 4

TRIDENT
SALMON & SHRIMP
SUPERIOR
SNOWCRACKER

An Excellent Publication

says Sir Alfred Sharpe, *Eastern Africa Today*

This book will be of great value to the world, especially the country interested in the development of the continent over a wide area, and in particular the continent of Africa.

This author has written a most exhaustive book on the subject of Africa, covering the majority of the continent, and including the countries of East Africa, West Africa, and South Africa.

The book is written in a clear, concise, and readable style, and the plan of the book is very logical and well thought out. Those who are interested in the development of Africa will find this book a most valuable addition to their library.

The book is illustrated with about a hundred photographs, and is up-to-date and contains a great deal of information about the continent of Africa, and is a most valuable reference work for those who are interested in the development of Africa.

The book is published in a most attractive and readable style, and is available to most of the people of the world. It is a most valuable addition to any library, and is a most interesting and accurate work on the subject of Africa, and its resources. It is a most valuable addition to any library, and is a most interesting and accurate work on the subject of Africa, and its resources.

The book is published in a most attractive and readable style, and is available to most of the people of the world. It is a most valuable addition to any library, and is a most interesting and accurate work on the subject of Africa, and its resources. It is a most valuable addition to any library, and is a most interesting and accurate work on the subject of Africa, and its resources.

The book is published in a most attractive and readable style, and is available to most of the people of the world. It is a most valuable addition to any library, and is a most interesting and accurate work on the subject of Africa, and its resources. It is a most valuable addition to any library, and is a most interesting and accurate work on the subject of Africa, and its resources.

It is a most valuable addition to any library, and is a most interesting and accurate work on the subject of Africa, and its resources. It is a most valuable addition to any library, and is a most interesting and accurate work on the subject of Africa, and its resources.

It is a most valuable addition to any library, and is a most interesting and accurate work on the subject of Africa, and its resources. It is a most valuable addition to any library, and is a most interesting and accurate work on the subject of Africa, and its resources.

EAST AFRICA

THE ONLY NEWSPAPER IN EUROPE DEVOTED
EXCLUSIVELY TO THE INTERESTS OF
THOSE WHO ARE TRADING, HOLDING
PROPERTY OR OTHERWISE INTERESTED IN
EAST AFRICA AND CENTRAL AFRICA
PUBLISHED WEEKLY

Vols. No. 250

THURSDAY, SEPTEMBER 4, 1902

Sixpence



BRITISH INDIA LINE

REGULAR SERVICE LONDON AND HAMBURG TO AND FROM EAST AFRICA
Suez Canal, Red Sea, Indian Ocean, Suez Canal, Red Sea, Indian Ocean

YEAR-ROUND AND PASSENGER SERVICE RAYDA - KILIMBARI - BURSAH
Suez Canal, Red Sea, Indian Ocean, Suez Canal, Red Sea, Indian Ocean

EAST AFRICAN LOCAL SERVICES TO ZANZIBAR, DAR ES SALAM, DUAHA
Suez Canal, Red Sea, Indian Ocean, Suez Canal, Red Sea, Indian Ocean

SOLE AGENTS: P. & O. HOUSE, 14, COCKSPUR STREET, LONDON, E.C. 4
SHEPHERD, BARNES & CO., 125, ALBANY STREET, LONDON, W. 1
GENEVA, HANLEY & CO., 158, RUE DE LA BOURSE, GENEVA, S.W. 11

Tanganyika Territory

ESTATE AGENTS
MANAGERS AND SURVEYORS

INCORPORATED IN ENGLAND
Registered Office: 15, Abchurch Lane, London, E.C. 4

THE TANGANYIKA ESTATE AGENTS

15, ABCHURCH LANE, LONDON, E.C. 4

PROPERTY INVESTMENT ASSURANCE

PROPERTY INVESTMENT ASSURANCE

PROPERTY INVESTMENT ASSURANCE

PROPERTY INVESTMENT ASSURANCE

GRIFFITHS, M'ALISTER, LTD.

LIVERPOOL AND LONDON

THROUGH NORTHERN BURMA BY CAR


THE EAST AFRICAN NAVIGATIONAL COMPANY'S SAFETY RAZOR

THE EMPIRE SERIES

A popular new Model at a price the world has never seen.

The Double Cut safety razor is the most complete and perfect yet devised. It is the most reliable and most comfortable of all razors. It is the most perfect and most reliable of all razors.

INSIST ON GILLETTE **HAVING GRADES**



GILLETTE SAFETY RAZOR

TRADE MARK

GILLETTE

TRADE MARK


GILLETTE SAFETY RAZOR CO. LTD.

115, Great Portland Street, London, W.1.

REVOULT TYPEWRITERS

UNDERWOOD'S MAKE

Underwood's makes the most reliable and most perfect of all typewriters. It is the most reliable and most perfect of all typewriters. It is the most reliable and most perfect of all typewriters.



WILLIAMS & CO. LTD.

MANCHESTER, ENGLAND

THE POPULAR SERVICE

TO EAST AFRICA

CENTRAL LINE

Company of Steamships Ltd.

For further particulars apply to the General Manager, 115, Great Portland Street, London, W.1.

EAST AFRICA

MESSAGERIES MARITIMES

WORTHINGTON'S MAILING FROM MARSEILLES

General Agents: Messageries Maritimes, 115, Great Portland Street, London, W.1.

BARLINGS' HANDBOOKS

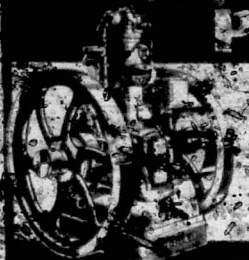
For further particulars apply to the General Manager, 115, Great Portland Street, London, W.1.

THE EAST AFRICAN NAVIGATIONAL COMPANY'S SERVICE

SHIPPING

For further particulars apply to the General Manager, 115, Great Portland Street, London, W.1.

PETER OIL ENGINES



These engines are of the most reliable and efficient type, and are suitable for use in all climates. They are particularly adapted for use in the tropics, where they are used for generating electricity, for driving pumps, and for other purposes. They are also used for power in the mines, and for driving machinery in the mills and factories.

10-250 H.P.

Agents: Messrs. J. & W. G. WILSON, Ltd., 10, Abchurch Lane, London, E.C. 4. Sole Agents for the Straits Settlements and F. M. S.: Messrs. J. & W. G. WILSON, Ltd., 10, Abchurch Lane, London, E.C. 4.

10 H.P. Oil Engine
and General Purpose

PETERS LIMITED
YEVIL, ENGLAND

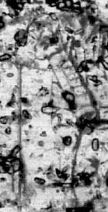
FRANCIS THEAKSTON, LTD.



LIGHT RAILWAY
TRACK, WAGONS, LOCOMOTIVES

General Cotton Goods, etc.
Messrs. J. & W. G. WILSON, Ltd., 10, Abchurch Lane, London, E.C. 4.

LANG EARTH BORE



EARTH BORE

This machine is of the most reliable and efficient type, and is suitable for use in all climates. It is particularly adapted for use in the tropics, where it is used for boring wells, and for other purposes. It is also used for power in the mines, and for driving machinery in the mills and factories.

Agents: Messrs. J. & W. G. WILSON, Ltd., 10, Abchurch Lane, London, E.C. 4.



Built by Dunlop

From the first inception of the Fort Dunlop motor car, motorists throughout the world have been looking for an advance in this new Dunlop specialty. Generally they have found it in the form of a tire that is strong, and that can stand up to the most severe conditions of use. It is a tire that is built by Dunlop, and that is built in a special way.

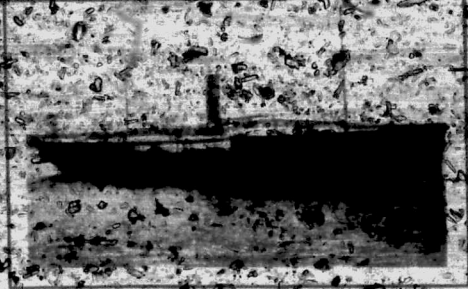
It is a tire that is built by Dunlop, and that is built in a special way. It is a tire that is built by Dunlop, and that is built in a special way.

FORT DUNLOP



THE EAST AFRICAN

THE KENYA and UGANDA RAILWAYS AND HARBOURS



For all the latest information
write to the General Manager, Kenya and Uganda
Railways, P.O. Box 100, Nairobi, Kenya.
For all the latest information
write to the General Manager, Kenya and Uganda
Railways, P.O. Box 100, Nairobi, Kenya.

Their shadows never grow less!

There is no fading away
of sharp or shade
of brilliant stripes and
of fine detail can be worn and
comfortably and economically
all year round. The fine
textured smooth surface, negative
of the original design, and
with freedom of form and
even under the native sun
the shades of color do not
and plain stripes of cool
African sunburn. All the
of the shirt is made from the
best quality cotton.



Vivella
REGISTERED
TRADE MARK
GUARANTEED

Vivella SHIRTS and PYJAMAS

Eastern African Dependencies Trade and Information Office

Royal Mail Building
Cockspur Street, London, S.W. 1

Kenya, Tanganyika,
Zanzibar, Nyasaland,
Northern Rhodesia

The Commissioner will always be glad to give any information in his power to anyone on any
way interested in Eastern Africa.

Eastern Africa Today - Fourth Edition - costs only 10/- post free

77 VARIETIES 77
 READY TO SERVE FOODS

Level



TOY CONFECTIONERIES
 These products are ready to serve, hygienic,
 ready to eat, delicious, smiling, surprising.
 JOHN A. HARRERT, of THE WESTERN
 COUNTRY CREAMERIES, LTD.
 1, Finchley Road, Finchley, London, N.C.1.
 1, York Road, Yeovil, Somerset.
 MARKETS OF THE WORLD

**LENNARDS LEAD
 THE WORLD**

FOR
 VALUE
 WHITE
 CANVAS
 SHOES



WITH FEETED
 RED RUBBER SOLE
 ALL BROWN MAKE

IN GENTLEMEN'S sizes 6 to 12
 LADIES' sizes 5 to 11
 2/3 1/4
 POSTAGE EXTRA

LENNARDS LIMITED
 1, FINSBURY PARK, LONDON, N.C.1.
 Overseas Dept. BULLOCK, ENG.

**FORTNUM
 & MASON**
 FOR
 TROPICAL CLOTHING
 STORES

It is the RIGHT at the RIGHT
 price, and backed by Fortnum &
 Mason's 1200 years' experience of
 serving all kinds of articles
 GROCERIES & PROVISIONS
 SPORTS, UNDERWEAR
 BOOTS & SHOES
 TROPICAL
 TENNIS RACQUETS
 HELMETS
 & MOSQUITO NETS

182 PICCADILLY, LONDON

THE SUDAN
 A Perfect Winter Resort



It is the most perfect winter resort in the world...
 The climate is perfect...
 The Nile river...
 Khartoum

**HIS GAME
 SHEETING**

Sudan Government Railways and Steamers
 BUCKINGHAM GATE, LONDON, S.W.1.

EAST AFRICA

THE ONLY NEWS-PAPER IN EUROPE DEVOTED
EXCLUSIVELY TO THE INTERESTS OF
THOSE WHOSE TRADING HOLDINGS
OR OTHERWISE INTERESTS ARE
IN EAST AND CENTRAL AFRICA.

A WEEKLY JOURNAL

Vol. 5, No. 752

THURSDAY, SEPTEMBER 1, 1932

Annual Subscription 25/-

FOUNDING AND EDITED BY L. JOHNSON.

EDITORIAL AND PUBLISHING OFFICES.

Great Marlborough Street, Oxford Street, London, W. 1.
Telephone: Museum 7576. Telegrams: "Lionel," London.

Official Organ in Great Britain

Convention of Associations of Kenya

Associated Producers of East Africa

Coffee Planters Union of Kenya and East Africa

Uganda Planters Association

Convention of Associations of East Africa

PRINCIPAL CONTENTS

East Africa (Africa)	1
Kenya (Africa)	1
Uganda (Africa)	1
East Africa (Africa)	1
Kenya (Africa)	1
Uganda (Africa)	1
East Africa (Africa)	1
Kenya (Africa)	1
Uganda (Africa)	1
East Africa (Africa)	1
Kenya (Africa)	1
Uganda (Africa)	1
East Africa (Africa)	1
Kenya (Africa)	1
Uganda (Africa)	1

AN EAST AFRICAN ARBOR DAY

It is a pleasure to see the realization of an arbor day in East Africa. The first arbor day in East Africa was held in Kenya in 1928. It was a day of planting trees and flowers in the public parks and squares. The success of this day was due to the cooperation of the Government and the people. It is a pleasure to see that this spirit of cooperation is now being extended to other parts of East Africa. In New Zealand, for example, the arbor day has become a national holiday. It is a day when the people of New Zealand come out to plant trees and flowers in their own gardens and in the public parks. This is a very good thing, for it helps to make the country more beautiful and more pleasant to live in. It is a pleasure to see that the same spirit of cooperation is now being extended to other parts of East Africa. In the future, it is hoped that arbor days will be held in all the countries of East Africa. This will help to make the continent more beautiful and more pleasant to live in.

of the East African people and their success in the various branches of their industry. It is a pleasure to see that the people of East Africa are now beginning to take an interest in the planting of trees and flowers. This is a very good thing, for it helps to make the country more beautiful and more pleasant to live in. It is a pleasure to see that the same spirit of cooperation is now being extended to other parts of East Africa. In the future, it is hoped that arbor days will be held in all the countries of East Africa. This will help to make the continent more beautiful and more pleasant to live in.

There is a school of thought in East Africa which is of the opinion that the Government should not interfere with the planting of trees and flowers. They say that it is the duty of the people to plant trees and flowers in their own gardens and in the public parks. They say that the Government should not waste its money on such a thing. This is a very foolish opinion, for it is the duty of the Government to make the country more beautiful and more pleasant to live in. It is a pleasure to see that the Government is now beginning to take an interest in the planting of trees and flowers. This is a very good thing, for it helps to make the country more beautiful and more pleasant to live in. It is a pleasure to see that the same spirit of cooperation is now being extended to other parts of East Africa. In the future, it is hoped that arbor days will be held in all the countries of East Africa. This will help to make the continent more beautiful and more pleasant to live in.

The Government of East Africa has now decided to hold an arbor day in all the countries of East Africa. This is a very good thing, for it helps to make the country more beautiful and more pleasant to live in. It is a pleasure to see that the people of East Africa are now beginning to take an interest in the planting of trees and flowers. This is a very good thing, for it helps to make the country more beautiful and more pleasant to live in. It is a pleasure to see that the same spirit of cooperation is now being extended to other parts of East Africa. In the future, it is hoped that arbor days will be held in all the countries of East Africa. This will help to make the continent more beautiful and more pleasant to live in.

CASH MONEY WORK FOR THE JOINT EAST AFRICAN BOARD

Thoughts on his Chairman's Daily Question for East Africa



Sperry Mann, Chairman of the Joint East African Board, was elected last week after a few months' work. It is too early to say whether he has been not only a hard worker but also a worker for, but the general opinion is that the Joint Council of the Board, by being the only effective body, has done a great deal of work. It has succeeded in disinterring the respect for his personal qualities and the sincere anxiety of the Board to do everything in his power for East Africa, having been a factor of great importance in the establishment of the Board, which has a high influence on the work for the Dependencies which is being done.

It is a fact that the Board has been a success in all respects in which it has been successful. It has succeeded in disinterring the respect for his personal qualities and the sincere anxiety of the Board to do everything in his power for East Africa, having been a factor of great importance in the establishment of the Board, which has a high influence on the work for the Dependencies which is being done.

It is a fact that the Board has been a success in all respects in which it has been successful. It has succeeded in disinterring the respect for his personal qualities and the sincere anxiety of the Board to do everything in his power for East Africa, having been a factor of great importance in the establishment of the Board, which has a high influence on the work for the Dependencies which is being done.

...they have been an apostle of the cause of Africa in the East and Tanganyika Territory, such things as have been achieved by the Board...

...opposed to nullification of the Board's work. The Chairman, however, has been elected the Vice-Chairman of the Board, and as we recently reported, the Board is inclined to consider whether Sir George Johnston should continue to be Chairman of the Board, and if so, whether it should be continued to be so. Sir George Johnston has been a factor of great importance in the establishment of the Board, which has a high influence on the work for the Dependencies which is being done.

...the value of the Chairman's office in such a position. It is a fact that the Board has been a success in all respects in which it has been successful. It has succeeded in disinterring the respect for his personal qualities and the sincere anxiety of the Board to do everything in his power for East Africa, having been a factor of great importance in the establishment of the Board, which has a high influence on the work for the Dependencies which is being done.

...had some of the same... the Board, for at least some months past... remember the work done in the past... which has been put into the discharge of his duties... it is well to be sincere.

...the Board has been a success in all respects in which it has been successful. It has succeeded in disinterring the respect for his personal qualities and the sincere anxiety of the Board to do everything in his power for East Africa, having been a factor of great importance in the establishment of the Board, which has a high influence on the work for the Dependencies which is being done.

LIEUTENANT-COLONEL E. E. ...

WELL-KNOWN KENYA SETTLERS ...

... of a ... report ... of ... Colonel ...

... Major ... work for ...

... service of the ...

... well-known ...

His Splendid Quality

... his splendid quality ...

... the details have come ...

MEETING OF EAST AFRICAN SECTION

Of London Chamber of Commerce

Last week's meeting of the East African Section of the London Chamber of Commerce Sir Humphrey Jervis, the Chairman, was joined by David Jervis, President of the London Chamber of Commerce and Industry, and the Chairman of the East African Section, Mr. G. S. Roberts, Chairman of the Uganda Cotton Producers' Association. The meeting was held in the afternoon and was attended by a group of African business executives and by a number of British and African Chamber of Commerce members and members of the Uganda Cotton Producers' Association. The meeting was held in the afternoon and was attended by a group of African business executives and by a number of British and African Chamber of Commerce members and members of the Uganda Cotton Producers' Association.

Mr. Jervis, who presided, opened the meeting by welcoming the guests and the members of the East African Section. He then turned to the Uganda Cotton Producers' Association and discussed the progress of the cotton industry in Uganda. He mentioned that the cotton crop in Uganda had been a record-breaking one and that the Uganda Cotton Producers' Association was doing well. He also mentioned that the Uganda Cotton Producers' Association was planning to export more cotton to the United Kingdom and that he was sure that the Chamber of Commerce would be able to help them in this regard.

Mr. Jervis then turned to the Uganda Cotton Producers' Association and discussed the progress of the cotton industry in Uganda. He mentioned that the cotton crop in Uganda had been a record-breaking one and that the Uganda Cotton Producers' Association was doing well. He also mentioned that the Uganda Cotton Producers' Association was planning to export more cotton to the United Kingdom and that he was sure that the Chamber of Commerce would be able to help them in this regard.

...over the ... trade ... fabric ... be ... between ... and

... the subject of locust the

... the

... the

"EAST AFRICA" BOOKS

THE LAND OF THE LION

Mr. Cherry Keason's New Book

ILLUSTRATED mainly by photographs taken from the expeditions of which he made up his last expedition. Mr. Cherry Keason's new book, "The Land of the Lion," is a new and interesting volume, well written in his clear and simple style full of spread observations, and inspired by his characteristic love of all animal life. The volume is a valuable addition to African literature, and covers a great deal of ground from Hon. Mr. Keason's travels from the mountains of the East African highlands, and where he saw the typical African life. Many adventures are recorded in the book, and some of these are so old-fashioned and so full of good stories, some of which are humorous and all good reading.

Mr. Keason's experiences, which he has written in a simple and direct style, are of the most interesting and valuable nature. He quotes one as having carried a lion's head home from a single day's hunting, which may be easily mistaken for a leopard in the field, he considers himself a friendly and playful animal.

An unusual incident in the life of Mr. Keason is the observation of a lion's head in a bush, which he had seen in a photograph. He was told that the lion had been shot by a man who had been hunting for a long time. He was told that the lion had been shot by a man who had been hunting for a long time.

The observer stood in the center of the bush, and the other animals had many interesting observations. He was told that the lion had been shot by a man who had been hunting for a long time. He was told that the lion had been shot by a man who had been hunting for a long time.

WOMEN'S FLIGHTS ACROSS AFRICA

The journey of Miss Mary Heath and Miss Helen Heath across Africa is a remarkable feat. The women have traveled from Cairo to Cape Town, and back to Cairo, in a single journey. They have traveled through the most difficult and dangerous parts of the continent, and have done so in a most admirable manner. Their journey is a true story of courage and endurance.

In two hours, they crossed the edge of the Kalahari Desert, and reached the town of Tlokweng, one of the most beautiful and fertile of the Kalahari. They were met by a man who had been waiting for them, and they were taken to a house where they were to stay.

They were met by a man who had been waiting for them, and they were taken to a house where they were to stay. They were met by a man who had been waiting for them, and they were taken to a house where they were to stay.

They were met by a man who had been waiting for them, and they were taken to a house where they were to stay. They were met by a man who had been waiting for them, and they were taken to a house where they were to stay.

WASH YOUR FACE WITH
SODA WATER
"SODA WATER" MACHINE
WILLIAMS & CO. LONDON



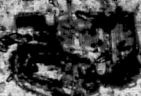
"CATERPILLAR" TRACTORS

are built
in five sizes



TEN

Drawbar horsepower, 10. Belt horse-
power, 13.2. Fuel capacity, 15 gal.
Weight, 2,200 lbs. (incl. operator).



FIFTEEN

Drawbar horsepower, 15. Belt horse-
power, 19.8. Fuel capacity, 22 gal.
Weight, 3,200 lbs. (incl. operator).



TWENTY

Drawbar horsepower, 20. Belt horse-
power, 26.4. Fuel capacity, 28 gal.
Weight, 4,200 lbs. (incl. operator).



THIRTY

Drawbar horsepower, 30. Belt horse-
power, 39.6. Fuel capacity, 42 gal.
Weight, 6,200 lbs. (incl. operator).



Drawbar horsepower, 40. Belt horse-

power, 52. Fuel capacity, 56 gal.
Weight, 8,200 lbs. (incl. operator).

Whether the need of power is for farming,
road building, contracting or logging,
whether it be for slow removal, hauling,
earth moving or any other kind of work,
the purchaser of a "Caterpillar" Tractor
has the choice of an complete line—size
and type—to meet an almost unlimited range
of requirements.

You can find "Caterpillar" tractors doing
the job in every part of the civilized world.
You can find them in operation on a hundred
different types of jobs.

They are built to be rugged, to be able to
operate in the roughest conditions, to be able to
operate on soft ground, to be able to operate
on mud, sand, snow, ice, or any other
surface of pine and to do so with the minimum
skipping and track damage. They are built to
be able to operate on any kind of road, to be able to
operate on any kind of work.

Caterpillar Tractor Co.

PEORI, ILLINOIS
CATERPILLAR TRACTOR CO.
CHICAGO, ILLINOIS
CATERPILLAR TRACTOR CO.
CHICAGO, ILLINOIS

CATERPILLAR TRACTOR

SIR EDWARD GOSWOLD, BART., M.P.,
Northampton, 1880-1881.
Christ Church, London, 1881-1882.
University of London, 1882-1883.
of Leeds, 1883-1884.

of Leeds, 1883-1884.
of Leeds, 1883-1884.
of Leeds, 1883-1884.
of Leeds, 1883-1884.

of Leeds, 1883-1884.
of Leeds, 1883-1884.
of Leeds, 1883-1884.
of Leeds, 1883-1884.

of Leeds, 1883-1884.
of Leeds, 1883-1884.
of Leeds, 1883-1884.
of Leeds, 1883-1884.

of Leeds, 1883-1884.
of Leeds, 1883-1884.
of Leeds, 1883-1884.
of Leeds, 1883-1884.

of Leeds, 1883-1884.
of Leeds, 1883-1884.
of Leeds, 1883-1884.
of Leeds, 1883-1884.

to have been published and (b) that
of his approval
of two quite rare
of the
of the
of the

The Government
The Times of
two column
leading

of the
of the
of the
of the

of the
of the
of the
of the

of the
of the
of the
of the

of the
of the
of the
of the

Mombasa Bonded Warehouse Co. Ltd.
 General Commissioning, Forwarding, Customs, Clearing,
 Insurance and Packing Agents.
 STORES, OFFICES & FREE STORAGE IN AFRICA.
 Forwards Bills of Lading to us for cleared and un-cleared
 ALL YOUR EXPORT PRODUCE

DE SOTO SIX

De Soto



Unequaled in the field of low priced sixes

The greater value afforded by the De Soto Six has been fully recognized and generous recognition is given to its

franchise by Chrysler Standardized Quality in power, style, beauty and comfort is apparent at first glance and will reveal performance abilities of a De Soto Six in a cylinder test or in any other serious race.

See it ride in its day and you will find that in the De Soto Six the genius of Chrysler surmounts price in a way to a degree that is in all existing traditions.

AMERICAN MOTORS CO. CHRYSLER DIVISION

1000 Broadway, New York, N. Y. 10018

AMERICAN MOTORS CO. CHRYSLER DIVISION

1000 Broadway, New York, N. Y. 10018

ASIA AFRICA

COMPANHIA DE MOÇAMBIQUE

ALVARO DA SILVA, S. A. S. S. E. G. A. P. U. B. L. I. C. A. L. I. S. B. O. A.
RUA DE S. CARLOS, 10, 1.º ANDAR, LISBOA, PORTUGAL
HAMILTON HOUSE, 11, CECILIA PLACE, E. C. 4, LONDON
BOULEVARD HAUSSMANN, PARIS

RAILWAY REFERENCE

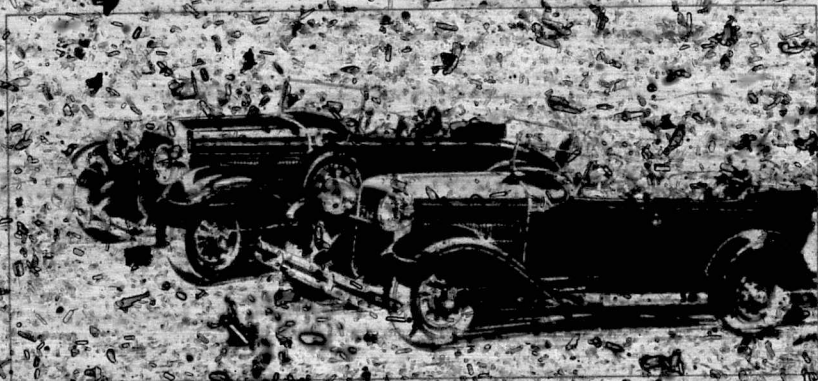
BEIRA	0
MOÇIMBANE	100
CAPE TOWN	2300
PORT LOUIS	2350
PORT JOHANNESBURG	2400
PORT DURBAN	2450
PORT NELS PRINCE	2500
PORT DURBAN	2550
PORT DURBAN	2600
PORT DURBAN	2650
PORT DURBAN	2700
PORT DURBAN	2750
PORT DURBAN	2800
PORT DURBAN	2850
PORT DURBAN	2900
PORT DURBAN	2950
PORT DURBAN	3000
PORT DURBAN	3050
PORT DURBAN	3100
PORT DURBAN	3150
PORT DURBAN	3200
PORT DURBAN	3250
PORT DURBAN	3300
PORT DURBAN	3350
PORT DURBAN	3400
PORT DURBAN	3450
PORT DURBAN	3500
PORT DURBAN	3550
PORT DURBAN	3600
PORT DURBAN	3650
PORT DURBAN	3700
PORT DURBAN	3750
PORT DURBAN	3800
PORT DURBAN	3850
PORT DURBAN	3900
PORT DURBAN	3950
PORT DURBAN	4000
PORT DURBAN	4050
PORT DURBAN	4100
PORT DURBAN	4150
PORT DURBAN	4200
PORT DURBAN	4250
PORT DURBAN	4300
PORT DURBAN	4350
PORT DURBAN	4400
PORT DURBAN	4450
PORT DURBAN	4500
PORT DURBAN	4550
PORT DURBAN	4600
PORT DURBAN	4650
PORT DURBAN	4700
PORT DURBAN	4750
PORT DURBAN	4800
PORT DURBAN	4850
PORT DURBAN	4900
PORT DURBAN	4950
PORT DURBAN	5000
PORT DURBAN	5050
PORT DURBAN	5100
PORT DURBAN	5150
PORT DURBAN	5200
PORT DURBAN	5250
PORT DURBAN	5300
PORT DURBAN	5350
PORT DURBAN	5400
PORT DURBAN	5450
PORT DURBAN	5500
PORT DURBAN	5550
PORT DURBAN	5600
PORT DURBAN	5650
PORT DURBAN	5700
PORT DURBAN	5750
PORT DURBAN	5800
PORT DURBAN	5850
PORT DURBAN	5900
PORT DURBAN	5950
PORT DURBAN	6000
PORT DURBAN	6050
PORT DURBAN	6100
PORT DURBAN	6150
PORT DURBAN	6200
PORT DURBAN	6250
PORT DURBAN	6300
PORT DURBAN	6350
PORT DURBAN	6400
PORT DURBAN	6450
PORT DURBAN	6500
PORT DURBAN	6550
PORT DURBAN	6600
PORT DURBAN	6650
PORT DURBAN	6700
PORT DURBAN	6750
PORT DURBAN	6800
PORT DURBAN	6850
PORT DURBAN	6900
PORT DURBAN	6950
PORT DURBAN	7000
PORT DURBAN	7050
PORT DURBAN	7100
PORT DURBAN	7150
PORT DURBAN	7200
PORT DURBAN	7250
PORT DURBAN	7300
PORT DURBAN	7350
PORT DURBAN	7400
PORT DURBAN	7450
PORT DURBAN	7500
PORT DURBAN	7550
PORT DURBAN	7600
PORT DURBAN	7650
PORT DURBAN	7700
PORT DURBAN	7750
PORT DURBAN	7800
PORT DURBAN	7850
PORT DURBAN	7900
PORT DURBAN	7950
PORT DURBAN	8000
PORT DURBAN	8050
PORT DURBAN	8100
PORT DURBAN	8150
PORT DURBAN	8200
PORT DURBAN	8250
PORT DURBAN	8300
PORT DURBAN	8350
PORT DURBAN	8400
PORT DURBAN	8450
PORT DURBAN	8500
PORT DURBAN	8550
PORT DURBAN	8600
PORT DURBAN	8650
PORT DURBAN	8700
PORT DURBAN	8750
PORT DURBAN	8800
PORT DURBAN	8850
PORT DURBAN	8900
PORT DURBAN	8950
PORT DURBAN	9000
PORT DURBAN	9050
PORT DURBAN	9100
PORT DURBAN	9150
PORT DURBAN	9200
PORT DURBAN	9250
PORT DURBAN	9300
PORT DURBAN	9350
PORT DURBAN	9400
PORT DURBAN	9450
PORT DURBAN	9500
PORT DURBAN	9550
PORT DURBAN	9600
PORT DURBAN	9650
PORT DURBAN	9700
PORT DURBAN	9750
PORT DURBAN	9800
PORT DURBAN	9850
PORT DURBAN	9900
PORT DURBAN	9950
PORT DURBAN	10000



THE COMPANY'S OFFICE AT BEIRA

From Africa to any part of the world by rail, sea, or air. Goods sent by rail only to the first port of call.

The GREATER HUDSON ESSEX The Challenger



...ledge... as well
...performer

...ages of...
...and the Greater...
...standing value of...
...They...
...low...
...Hudson...
...mile...
...cars...
...wide...
...ing...
...ing

...in...
...The...
...Hudson Essex...
...any...
...wonder that Essex...
...and the Greater Hudson...
...acknowledged leaders...
...Visit the nearest Hudson Essex...
...two...
...will...
...maintain...



CARR LAWSON & CO. INC.
SIXTH AVENUE, HARTFORD, CONNECTICUT

Tell your friends you are a Hudson Essex owner.

BROTEX A NOTE FOR BRITISH PLANTERS THEBOLD LAND FOR KANDA NATIVES

It is a curious fact that the very first plant to have been introduced into the East African continent was the brotex tree. This tree, which is a native of the West Indies, was introduced to the East African continent by the British planters in the early days of the settlement of the East African coast. The brotex tree is a very valuable tree for the East African planters, as it is a very hardy tree which is able to grow in the most arid and sterile soils of the East African coast. The brotex tree is a very valuable tree for the East African planters, as it is a very hardy tree which is able to grow in the most arid and sterile soils of the East African coast.

The brotex tree is a very valuable tree for the East African planters, as it is a very hardy tree which is able to grow in the most arid and sterile soils of the East African coast. The brotex tree is a very valuable tree for the East African planters, as it is a very hardy tree which is able to grow in the most arid and sterile soils of the East African coast. The brotex tree is a very valuable tree for the East African planters, as it is a very hardy tree which is able to grow in the most arid and sterile soils of the East African coast.

The brotex tree is a very valuable tree for the East African planters, as it is a very hardy tree which is able to grow in the most arid and sterile soils of the East African coast. The brotex tree is a very valuable tree for the East African planters, as it is a very hardy tree which is able to grow in the most arid and sterile soils of the East African coast. The brotex tree is a very valuable tree for the East African planters, as it is a very hardy tree which is able to grow in the most arid and sterile soils of the East African coast.

The brotex tree is a very valuable tree for the East African planters, as it is a very hardy tree which is able to grow in the most arid and sterile soils of the East African coast. The brotex tree is a very valuable tree for the East African planters, as it is a very hardy tree which is able to grow in the most arid and sterile soils of the East African coast. The brotex tree is a very valuable tree for the East African planters, as it is a very hardy tree which is able to grow in the most arid and sterile soils of the East African coast.

The brotex tree is a very valuable tree for the East African planters, as it is a very hardy tree which is able to grow in the most arid and sterile soils of the East African coast. The brotex tree is a very valuable tree for the East African planters, as it is a very hardy tree which is able to grow in the most arid and sterile soils of the East African coast. The brotex tree is a very valuable tree for the East African planters, as it is a very hardy tree which is able to grow in the most arid and sterile soils of the East African coast.

The brotex tree is a very valuable tree for the East African planters, as it is a very hardy tree which is able to grow in the most arid and sterile soils of the East African coast. The brotex tree is a very valuable tree for the East African planters, as it is a very hardy tree which is able to grow in the most arid and sterile soils of the East African coast. The brotex tree is a very valuable tree for the East African planters, as it is a very hardy tree which is able to grow in the most arid and sterile soils of the East African coast.

ANTHROPOLOGISTS AND THE CASSED UNION READER

The anthropologists and the Cased Union Reader. The anthropologists and the Cased Union Reader. The anthropologists and the Cased Union Reader. The anthropologists and the Cased Union Reader. The anthropologists and the Cased Union Reader.

Advertisement for Robinson & Cleaver Ltd. featuring a circular logo with a crown and the text 'ROBINSON & CLEAVER LTD'. Below the logo, it says 'Linen Hall, London'.

THE African Marine & General Engineering COMPANY, LTD. KILIMBO

Ship Repairing, Saw-Making and
Moulding
OXYACETYLENE WELDING
and CUTTING

In their well equipped planters, they will repair
Hull and Office Furniture, and handle all
kinds of engineering work. They are
invited to communicate.

ESTIMATES GIVEN

Telephone 36. Telegrams: AFRICA
SMITH, MACKENZIE & CO. (General)

SMITH, MACKENZIE & CO

P.O. Box 120, NOMBASA

and as
SOLE AGENTS FOR EAST AFRICA
GENERAL MERCHANTS

STEAMSHIP CLEARING
FORWARDING AND EXPORT AGENTS

CONSIGN YOUR GOODS AND BAGGAGE TO US
WHOLESALE WAREHOUSE PROPRIETORS

STORAGE CHARGES AND FREIGHT

T. S. MACKENZIE

Kodak Photographic Products set the standard throughout the World

Velox
The original Gaslight Printing Paper
They there has the new Velox on the back
Every batch thoroughly tested at the Kodak
Works. In three grades to suit the needs of
different results.

Kodak Film
The most perfect for Tropical
Countries in a rectangular container. Any
of the Kodak film is available in
three sizes: Cassette



You can rely on Kodak
The Kodak Corporation, the largest Photographic Corporation in
the World guarantees the millions of users of Kodak products
that they will always get the best. Kodak is the name.

Galle & Roberts Ltd. Nairobi & Mombasa

The Established Engineering and Agricultural House of Kenya

Our main office is in Nairobi, Kenya, where we
offer a wide range of services. We also have
branches in Mombasa, Malindi, and Dar es Salaam.
We are the largest engineering and agricultural
firm in Kenya.

Prospectus sent on request
to our office.

Galle & Roberts Ltd.

P.O. Box 50, NAIROBI, Kenya

For Service and Satisfaction

BRANCHES: MALINDI, MOMBASA, DAR ES SALAAM

MAKE YOUR weighing PROFITABLE

Reliability is the keynote of the Avery 282 Platform Weigher. Year after year it gives accurate results.

All parts are made of durable mild steel and replacement is easy and accident-free and easy.

The robustness of the Avery 282 gives you more profitable service per ton or pound of its

AVERY

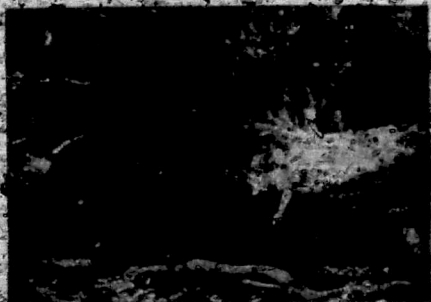
ARDEN LANE
AND PRESTON ROAD

WIMBORNE
DORSET

WEST AVERA, LTD

WIMBORNE

IN EVERY WEIGH A TON

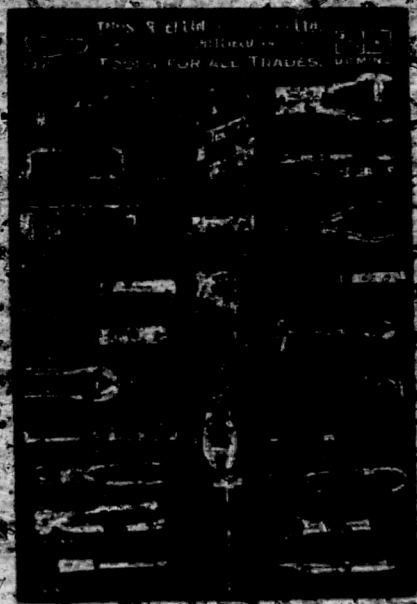


HERE IS A BIG ONE!

Here is a pig which has been out for a year and is a good example of a portable tank. Lower capacity than so many comes to cleaning and it will fit your cars, trucks, and loaded up your hand leaves in a way that will please you greatly.

THE WHEELER BROS. CO. LTD.

14, FINE FINE TRADES, ST. MICHAEL'S
DURHAM & ROBERT, ST. MICHAEL'S
DURHAM & ROBERT, ST. MICHAEL'S
DURHAM & ROBERT, ST. MICHAEL'S
DURHAM & ROBERT, ST. MICHAEL'S



THIS IS A...
FOR ALL TRADES...

BAST AFFAIRS INFORMATION BUREAU

East Africa's Information Bureau has been set up to provide information and advice on the political and economic situation in the East African territories. The Bureau is headed by a British officer, though the central office and one of the regional offices are being run by a local officer. The Bureau is expected to be of considerable help to the British Government in the East African territories.

The Information Council for Africa has been set up to provide information and advice on the political and economic situation in the East African territories. The Council is headed by a British officer, though the central office and one of the regional offices are being run by a local officer. The Council is expected to be of considerable help to the British Government in the East African territories.

General de Gaulle reported from the Eastern Front that the German army had been defeated in the East African territories. The German army had been defeated in the East African territories. The German army had been defeated in the East African territories.

The British Government has announced that it will be providing financial assistance to the East African territories. The British Government has announced that it will be providing financial assistance to the East African territories. The British Government has announced that it will be providing financial assistance to the East African territories.

The British Government has announced that it will be providing financial assistance to the East African territories. The British Government has announced that it will be providing financial assistance to the East African territories. The British Government has announced that it will be providing financial assistance to the East African territories.

The British Government has announced that it will be providing financial assistance to the East African territories. The British Government has announced that it will be providing financial assistance to the East African territories. The British Government has announced that it will be providing financial assistance to the East African territories.

The British Government has announced that it will be providing financial assistance to the East African territories. The British Government has announced that it will be providing financial assistance to the East African territories. The British Government has announced that it will be providing financial assistance to the East African territories.

The British Government has announced that it will be providing financial assistance to the East African territories. The British Government has announced that it will be providing financial assistance to the East African territories. The British Government has announced that it will be providing financial assistance to the East African territories.

The British Government has announced that it will be providing financial assistance to the East African territories. The British Government has announced that it will be providing financial assistance to the East African territories. The British Government has announced that it will be providing financial assistance to the East African territories.

A private company based in London, now has a 50% share in the East African territories. The company is expected to be of considerable help to the British Government in the East African territories. The company is expected to be of considerable help to the British Government in the East African territories.

The British Government has announced that it will be providing financial assistance to the East African territories. The British Government has announced that it will be providing financial assistance to the East African territories. The British Government has announced that it will be providing financial assistance to the East African territories.

The British Government has announced that it will be providing financial assistance to the East African territories. The British Government has announced that it will be providing financial assistance to the East African territories. The British Government has announced that it will be providing financial assistance to the East African territories.

Tiger Brand Cheese

Genuine Swiss Gruyere
THE BODY BUILDER



The most powerful brand in cheese markets
owing to its keeping qualities and unparalleled
taste and excellence.

L. R. B. & Co., Ltd., London, S.W. 1

EAST AFRICA



RECOMMENDED BY DOCTORS FOR 50 YEARS — IT KEEPS INFECTION AT BAY.

WRIGHT'S
Coal Tar Soap.

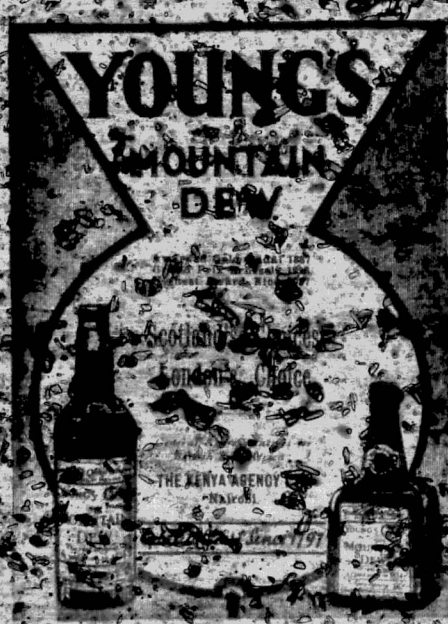


The best baby can get.

Horlicks Malted Milk is the most perfect baby food ever prepared in the world. It covers the body with a protective film, making the baby healthy, fat, and full of life and building up the sturdy frame.

HORLICKS
THE ORIGINAL
MALTED MILK

SOLE AGENTS: THE EAST AFRICAN TRADING CO. LTD. NAIROBI



YOUNG'S
MOUNTAIN
DEW

THE KENYA AGENCY
NAIROBI

Since 1791



ESANOFELE

THE SURE CURE FOR MALARIA.

Though outside the tropics Esanofele has proved itself superior in the past to the best remedy for malaria. It is both prophylactic and curative. East African doctors recognize and prescribe Esanofele. It is the only medicine from any country that has been used in the tropics for so long.

SOLE DISTRIBUTORS FOR THE EAST AFRICAN TRADING CO. LTD. NAIROBI

A. H. WARDLE & CO. LTD.
NAIROBI, MOMBASA AND ELDORET

PASSENGERS FROM EAST AFRICA

EAST AFRICAN STEAMSHIP MOVEMENTS

The following table shows the movements of the East African Steamship Company's vessels, which are operated by the Messageries Maritimes, S.A. The vessels are operated on a regular service between London, Southampton, and the East African ports. The vessels are operated on a regular service between London, Southampton, and the East African ports. The vessels are operated on a regular service between London, Southampton, and the East African ports.

ARRIVALS
 From East Africa: ...
 From East Africa: ...
 From East Africa: ...

DEPARTURES
 To East Africa: ...
 To East Africa: ...
 To East Africa: ...

EAST AFRICAN MAILES

The East African Mails are operated by the Messageries Maritimes, S.A. The vessels are operated on a regular service between London, Southampton, and the East African ports. The vessels are operated on a regular service between London, Southampton, and the East African ports.

The East African Mails are operated by the Messageries Maritimes, S.A. The vessels are operated on a regular service between London, Southampton, and the East African ports. The vessels are operated on a regular service between London, Southampton, and the East African ports.

The East African Mails are operated by the Messageries Maritimes, S.A. The vessels are operated on a regular service between London, Southampton, and the East African ports. The vessels are operated on a regular service between London, Southampton, and the East African ports.

The East African Mails are operated by the Messageries Maritimes, S.A. The vessels are operated on a regular service between London, Southampton, and the East African ports. The vessels are operated on a regular service between London, Southampton, and the East African ports.

The East African Mails are operated by the Messageries Maritimes, S.A. The vessels are operated on a regular service between London, Southampton, and the East African ports. The vessels are operated on a regular service between London, Southampton, and the East African ports.

AGENCIES FOR KENYA COLONY
 The following agencies are authorized to sell and lease land in the Kenya Colony. The agencies are authorized to sell and lease land in the Kenya Colony.

A High-Grade Pump **SOLOMONE**
 at a Low Price
 The SoloMone is a high-grade pump, which is suitable for all purposes. It is a high-grade pump, which is suitable for all purposes.



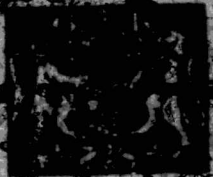
The SoloMone is a high-grade pump, which is suitable for all purposes. It is a high-grade pump, which is suitable for all purposes.

COFFEE ESTATES FOR SALE
 The following coffee estates are for sale. The coffee estates are for sale.

EAST AFRICAN LANDS & DEVELOPMENT COMPANY LTD.
 The East African Lands & Development Company Ltd. is a company which is authorized to sell and lease land in the Kenya Colony. The company is authorized to sell and lease land in the Kenya Colony.

The East African Lands & Development Company Ltd. is a company which is authorized to sell and lease land in the Kenya Colony. The company is authorized to sell and lease land in the Kenya Colony.

EAST-ATLANTA



Merchants
and Buyers

The BRITISH INDUSTRIES FAIR

is at the enlarged

OLYMPIA

London next year. In
Birmingham it will be
at CASTLE BROMWICH
as in previous years.

BUYERS

Book your
passage now

OLYMPIA affords the finest Exhibition Hall in
the country, a being well equipped with
comfortable accommodation for the
Merchants and Buyers who will be visiting the
London Section of the Fair next year. Every
effort is being done to ensure the greatest
comfort and convenience for all who will
be visiting every corner of the Field will be shown
to the British and the Fair next year is good value
for the money. Exhibitors of British products



FEBRUARY
17-28
1930

THE NEAREST STEAMERS
ARRIVE AT LONDON
FROM BIRMINGHAM
ON FEBRUARY 17-28
1930
CHARTER OF THE LONDON
STEAMSHIP COMPANY
LONDON