

# ROYAL TECHNICAL COLLEGE OF EAST AFRICA

*Incorporating the Gandhi Memorial Academy*



AFr.  
LG  
422

U5.1A5  
1957/58

Annual Report and Accounts  
for the year 1957/58

# ROYAL TECHNICAL COLLEGE OF EAST AFRICA

*with which is incorporated the Gandhi Memorial Academy*

---

**Visitor:**

HIS EXCELLENCY THE HON. SIR EVELYN BARING, G.C.M.G., K.C.V.O.

---

**Chairman:**

THE HON. P. J. ROGERS, C.B.E., M.L.C.

---

**Principal:**

H. P. GALE, B.A., PH.D., DIP.ED.—*Acting Principal*

---

**Bankers:**

BARCLAYS BANK D.C.O.

---

**Solicitors:**

MESSRS. DALY & FIGGIS

UNIVERSITY OF NAIROBI

# Foreword by The Chairman of the Governing Council

I was appointed Chairman on 1st July, 1958. During the year covered by this Report, Mr. Willoughby was Chairman until February 1st, 1958, and Mr. Luard from that date until he left East Africa in July this year.

Mr. Willoughby was Chairman for six years and connected with the College in its planning and development stage from its inception. This distinguished service will long be remembered.

I would like to place on record my appreciation of the work of Dr. Gale, the Acting Principal, the Governing Council and the College Teaching and Administrative Staff.

The thanks of the Governing Council are also warmly extended to the British Government, the Governments of Eastern Africa, the Gandhi Memorial Board, and the International Co-operation Administration of the Government of the United States of America, for their generosity and support.

The College has met with problems and criticisms and it will certainly meet with others in the years to come. How could it be otherwise, for development such as we have undertaken and surmounted must bring problems? Technological education is new in this country and will inevitably take a little time to be accepted as an integral part of our lives. May I assure the public, and particularly those to whom we look to to employ our Students, that their College is not being developed as an institution producing young men and women who rely only on an academic qualification to provide them with an easy living for the rest of their lives; the Academic side of their training is only a part, and character, integrity and the will to work are of equal importance.

What of the future? Your Governing Council has the firm belief that the future of the College and the peoples it serves lies before us in splendid prospect. This future belongs, perhaps, most of all to our students. I am sure they will prove worthy of it.

P. J. ROGERS

*12th December, 1958*

# Principal's Report to the Governing Council for the Session 1957/58

The second session in the academic life of the Royal Technical College began on 7th October, 1957, with a new intake of 104 students, which brought the total number of full-time students in the College up to 289. The new students quickly settled into the life of the College, particularly because of the help and assistance which they received from the second-year students; and it became clear that the work which had been done in the 1956/57 session had truly enabled the College to lay the foundations of a good corporate spirit and a valuable residential life. The same pattern of development was evident in the life of the Students' Society and of the various clubs and college societies.

The Warden reports that the Committee of the Halls of Residence consisting of Senior Students accepted more responsibility and were able in increasing measure to solve most of their own problems. The Students' Society also developed considerably under the able Chairmanship of F. Noronha, while student social activities showed marked improvement.

The first College Rag Day was successfully held and a considerable sum of money was raised through this medium for the Polio Fund. In Games and Sports, the Warden comments on the growth of a good spirit in inter-Faculty games, coupled with the emergence of active student Sports Committees. He again stresses, however, the urgent need for funds for the College to develop its Sports Grounds and laments the present position, in which all cricket matches have to be played away because of our financial inability, at present, to embark on laying out a cricket field. Games showed much promise and one College student represented Kenya against the England hockey side during their visit.

## **College Accommodation**

Although visitors to the College are invariably impressed with the main College tuition building, this building has long presented problems of accommodation to the Teaching Staff. These difficulties arise primarily because the main building was designed as premises for the original concept of a Kenya Technical Institute, situated in the heart of Nairobi and offering easy facilities for evening classes. When the College became an Inter-Territorial institution, with most of its students resident in College Hostels, the design of the main building, particularly in regard to its limited laboratory facilities, its lack of office accommodation, and its small library space, progressively created problems difficult to meet. However, these difficulties have not intruded into College life as much as they might have done owing to the response of the Staff, who in their enthusiasm have risen to the occasion.

A second Men's Hall of Residence of 104 Bedrooms, designed by Messrs. Blackburne, Norburn, Architects, and matching in all main details the existing Hall, was completed on 15th September, 1957, in time for the new session commencing the following month.

Additional features consisted of two Common Rooms, one linking the first Hall with the Dining Room to provide a general games room and a smaller one linking both Halls for use as a reading and meeting room.

The building was completed in the record time of five and a half months by the Contractors, Messrs. Coronation Builders Ltd.

In addition, we have been granted further generous financial aid from the Colonial Welfare and Development Office which has been matched by equal amounts from the East African Governments; we are also indebted to I.C.A. for their generosity.

This has enabled us to extend existing accommodation. The third Hostel for men will be built and will be ready for the 1959/60 session. Tuition space is to be extended by the addition of a fourth storey on to one wing of the main building. The Engineering Workshops are to be extended by the addition of five bays and the construction of a new block for civil engineering on the north side of Government Road on the present Engineering Workshops site, where it is hoped to concentrate the whole of the Faculty of Engineering as the College grows. The College Store and Workshop, which have long been inadequate and unsuitable, are also to be replaced by new buildings. In order to ease the pressure on

the main building, arrangements have been made to rent some of the old Dispensary buildings in Government Road for temporary office and tuition space.

Plans for the American Wing have also been finally approved and work on this project should commence early in the next session.

### **Academic Report**

During the 1957/58 session the College settled down to an intense period of sound academic work and the students seemed determined to take the fullest advantage of every aspect of the teaching and other academic facilities provided. There were fewer cases of an inability to strike a balance between studying and other College activities, and although many found the standard and pace of their studies difficult, the majority showed great determination, so that by the end of the session it was felt advisable to recommend that only a few should not be allowed to continue their course. Here it would be pertinent to add that the supporting Governments who were responsible for the award of bursaries kept a very close watch on the recipients and supported the College fully in all cases where the students did not seem to be doing as well as they could.

### **The Faculty of Architecture and Applied Art**

During the 1957/58 session the new intake into the Faculty was composed of six new students and six students were obliged to repeat the first year's work; of these, ten were passed to the second year of the course and one transferred to Applied Art. Of the fifteen students in the second year of the three-year Intermediate course in Architecture, all were allowed to proceed to the third year, and will be due to submit their Studio work in the latter part of the 1958/59 session and, if this work is approved, to sit for the R.I.B.A. Intermediate Examination. The Advisory Panel, drawn from Architects practising in East Africa, met three times during the session. A small exhibition of students' work was shown to the Panel in June and a further display was later open to the public. Discussions with the professional bodies on a possible modification of the Intermediate Examination to suit local conditions are proceeding at the moment, on the basis of the new overseas scheme of the R.I.B.A. in architectural education; and the substitution of Studio work done in the College for the Testimonies of Study required by the External Intermediate Examination has been agreed upon.

In the field of Applied Art, exceptionally good and original work is being done. Five students began courses during the year and have made encouraging progress; one student discontinued studies.

### **Faculty of Arts**

Seventeen new students were admitted to the Faculty in October, 1957, while eighteen students passed into the second year of the General Certificate of Education (A level) course in English Literature, History and Geography. The second-year students continued throughout the session to work well and sat the G.C.E. (A level) Examination in July, 1958. Only one student left the course. Of the seventeen who sat the Examination, nine students obtained Advanced passes in all three subjects, while among these were two Distinctions in History and one Distinction in English Literature; four students obtained two Advanced level passes with one pass at Ordinary level (this represents minimum University Entrance requirements) and three students obtained an Advanced pass in one subject.

### **Faculty of Commerce**

The Faculty began the 1957/58 session with thirty-six students coming into the second year of the G.C.E. (A level) course in Economics, Economic History and British Constitution. Fifteen new students joined this course, while thirteen joined the first year of the course leading to the Intermediate Examination of the Chartered Institute of Secretaries. At the end of the session, thirty-five students sat the General Certificate of Education (Advanced level) examination, of whom thirty-two obtained passes in all three subjects at Advanced level; two students passed in two subjects at Advanced level with one pass

at the Ordinary level; and one student passed in one subject at Advanced level and one subject at Ordinary level.

During the year the Governing Council of the College approved the provision of two new College courses in the Faculty, subject to the financial support of the Territorial Governments. The Government of Uganda was most anxious to see a course in Accountancy, and the Faculty also hoped to mount a course in Business Administration. Once again, many firms and Government Departments gave very valuable assistance to the Faculty by donating or lending films, equipment and literature, and by arranging talks to students, as well as industrial visits, for which the College is deeply grateful. Much assistance was also given in arranging the vacation employment for commercial students.

During the session the Faculty also enrolled seventy part-time students for professional courses leading to the examinations of the Association of Certified and Corporate Accountants, the Institute of Bankers, and the Chartered Institute of Secretaries. Here also the Faculty received invaluable services from the part-time lecturers drawn from Government service, from Commerce and from the professions.

During the session the Faculty also commenced short residential courses for Senior Management officers, in the vacations. Three such courses were successfully run on the themes: "Management Problems of the Smaller Firms", "Financial Control in Management" and "Industrial Relations and Negotiations". Here also great assistance was given by outside speakers and lecturers in specialist subjects.

### **Faculty of Engineering**

During the session the five-year Diploma course leading to the examinations of the Institutions of Civil, Mechanical and Electrical Engineers proceeded satisfactorily. The 1956/57 intake of students will take the Joint Part I Examination of the three Institutions in April, 1959, and successful students will go on to the fourth year of the Diploma course. This course has now been accepted by the Institutions of Civil and Mechanical Engineers as suitable training for the examinations.

The Institution of Electrical Engineers will consider granting approval for the five-year Diploma course after students have taken the Joint Part I Examinations in April, 1959, and in the meantime have agreed to successful students taking their Part II Examinations after the fourth year of the Diploma Course. At the start of the 1957/58 session nineteen students passed from the first to the second year of the Engineering course and nineteen new students entered the first year of the course. Recruitment of staff to the Faculty improved considerably during the year, although there are still some appointments to be filled.

### **Faculty of Science**

The Faculty of Science took in twelve new students at the start of the 1957/58 session and forty students of the 1956/57 intake passed to the second year of the course. At the end of the session forty students were entered for the General Certificate of Education (Advanced level) Examination, of whom fourteen passed in all three subjects at Advanced level; six obtained two passes at Advanced level and one pass at Ordinary level; two obtained two passes at Advanced level without the Ordinary level pass in the third subject; and the rest, with the exception of three, obtained varying degrees of success at the Ordinary level.

### **Department of Survey**

During the year courses were conducted for the first examination of the R.I.C.S. in the Land Surveying Section and the other sections which take a common First Examination. These courses, of one year's duration, were begun in April, 1957, with the recognition of the Royal Institution of Chartered Surveyors. Six students were admitted, four full-time and two part-time, who took the examination held in April, 1958. One student in Quantity Surveying obtained a complete pass in all subjects, and of the remainder, one withdrew and two failed.

The Department received a new intake of eighteen students in April, 1958, for the Land Surveying and Quantity Surveying sections.

### **Department of Domestic Science**

Seven new students joined the Domestic Science course in 1957 for the first year of training, while eight students passed from the 1956/57 intake to the second year of the three-year course for training teachers of Domestic Science. During the session the work of the Department of Domestic Science attracted increasing outside attention, largely because of demonstrations given to outside Societies. Work in the Department progressed very satisfactorily and all students in both years reached the required standard in practical and theoretical work, as well as obtaining their Red Cross First Aid and Home Nursing Certificates.

At the start of the 1957/58 session negotiations were begun in England with a view to bringing the College Department of Domestic Science into direct relationship with the School of Education of the University of Manchester, and the Manchester College of Housecraft, with the aim of enabling students of the College eventually to obtain a Diploma recognised in the United Kingdom, a development which the Territorial Governments supporting the College are anxious to obtain.

Negotiations have proceeded satisfactorily and new Staff have been appointed to the Department of Domestic Science with the advice and co-operation of the bodies concerned in the United Kingdom. Arrangements are also in hand for the Principal of the Manchester College of Housecraft to visit the College in 1959.

### **Library**

The stock of the Library is now over 16,000 books, pamphlets and official publications. In addition, over five hundred periodicals are received (two hundred and ten of these are by gift) and a start has been made with an illustrations collection. Lists of accessions are now issued regularly and the first of a series of bibliographies will be issued shortly.

Accommodation is a source of anxiety: shelving for books will be full by the middle of 1959 and storage room for periodical files is already full. The call upon periodical files, as important in a technical library as books, is growing rapidly with the development of courses and their inaccessibility is a serious inconvenience. Pressure on reading space has been relieved somewhat by the loan of over 350 books a week to Staff and students, but fuller use should be made of the evening opening hours.

A Training Course for library staff has been established and will reach its proper level with the completion of establishment early in 1959. A source of satisfaction is the greatly increased use of the information and bibliographical services offered by the Library.

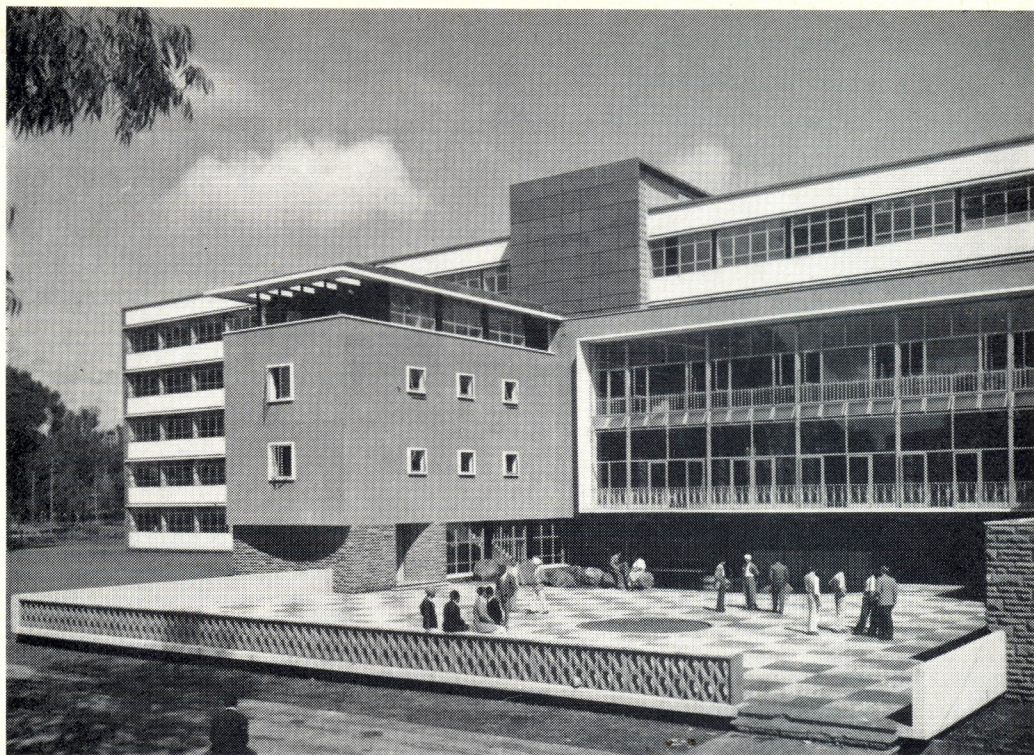
It is gratifying also to note that the application for Colonial Development and Welfare funds to enable the College to begin a building project for a new Library is to be considered in relation to the expected report of the Working Party on Higher Education in East Africa, for the members of the Working Party were aware of the academic problems involved in the difficulties of our present Library accommodation.

### **Examination Results**

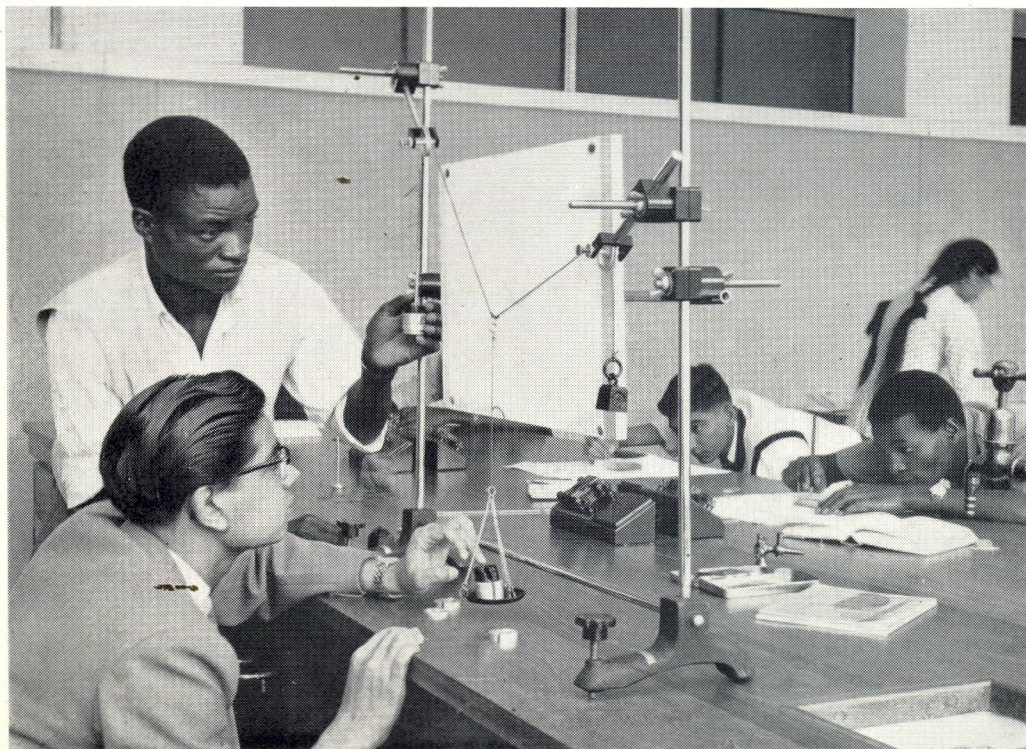
As a result of the General Certificate of Education (Advanced level) Examination held during the year, seventy-one candidates out of the ninety-two put forward by the College attained the minimum University Entrance standard. This is the first large group from the College to sit a public examination and the first one to complete a two-year course. The number of distinctions obtained and the general standard reached are a great source of satisfaction and reflect credit on all the Faculties concerned. This is a direct result of teamwork between the Lecturers and the students, and also between individual members of the academic staff.

*17th December, 1958*

H. P. GALE, B.A., PH.D., DIP.ED.



*The main Tuition Building*



*Students in the Physics Laboratory*



# ROYAL TECHNICAL COL

*Incorporating the Ga*

Balance Sheet at

(being a summary of the

	£ Sh. Cts.	£ Sh. Cts.
<b>CAPITAL ACCOUNT</b>		
Grants, Interest Received, Capitalised Expenditure and Gifts	951,560 01.27	
Percentage Provision for Replacement of Assets at 1st July, 1957	11,011 07.99	
	<u>                    </u>	962,571 09.26
<b>SPECIAL ACCOUNT</b>		
Donations received for specific purposes	109,667 13.81	
Accumulated Investment Income	8,826 13.89	
	<u>                    </u>	118,494 07.70
<b>ENDOWMENT FUND</b>		
Grants and Donations received		19,994 14.97
<b>REVENUE ACCOUNT</b>		
<i>Income and Expenditure Account</i>		
Accumulated Deficit at 30th June, 1957	33,716 12.57	
Net Surplus for the year ended 30th June, 1958	33,949 04.01	
	<u>                    </u>	
Accumulated Surplus at 30th June, 1958	232 11 44	
Provisions at 1st July, 1957	28,708 11 07	
Current Liabilities	45,086 08.04	
	<u>                    </u>	74,027 10.55
		 <u>                    </u>
H. P. GALE— <i>Acting Principal</i>		<u>£1,175,088 02.48</u>

We have examined the above summarised Balance Sheet and the attached detailed Balance Sheets and find that the Balance Sheets are properly drawn up so as to exhibit a true and correct view of the state of affairs of the College at the date shown and as shown by the books and vouchers.

Dated at Nairobi,  
This 21st day of January, 1959.

# COLLEGE OF EAST AFRICA

*Thi Memorial Academy*

30th June, 1958

(attached Balance Sheets)

	£ Sh. Cts.	£ Sh. Cts.
<b>CAPITAL ACCOUNT</b>		
Land . . . . .	31,577. 10. 77	
Buildings . . . . .	722,448 16 81	
Sundry Equipment . . . . .	163,463 07. 69	
	<hr/>	917,489.15.27
Sundry Debtors . . . . .	12 07 57	
Post Office Savings Bank . . . . .	24,679 05 90	
Cash . . . . .	20,390 00 52	
	<hr/>	45,081.13.99
		<hr/>
		962,571.09.26
<b>SPECIAL ACCOUNT</b>		
Investments at cost . . . . .	110,132 00 00	
Post Office Savings Bank . . . . .	82 15 88	
Cash . . . . .	8,279.11.82	
	<hr/>	118,494.07.70
<b>ENDOWMENT FUND</b>		
Investments at cost . . . . .	18,600 00 00	
Cash . . . . .	1,394.14.97	
	<hr/>	19,994.14.97
<b>REVENUE ACCOUNT</b>		
<i>Stores</i> . . . . .	6,237.03.43	
<i>Debtors</i> . . . . .	33,111.19.84	
<i>Cash</i> . . . . .	34,678 07.28	
	<hr/>	74,027.10.55
		<hr/>
		<hr/>
		£1,175,088 02 48
		<hr/>

Sheets and have obtained all the information and explanations we have required. In our opinion of the College's affairs according to the best of our information and the explanations given to us

DUNSTAN ADAMS, MAY AND STORY  
*Auditors*

# ROYAL TECHNICAL COL

*Incorporating the Gan*

**CAPITAL**

Balance Sheet at

	£ Sh. Cts.	£ Sh. Cts.
<b>CAPITAL ACCOUNT</b>		
Balance at 1st July, 1957 . . . . .		918,085.00.15
<i>Interest</i>		
Received on short-term deposits . . . . .	601.16.50	
<i>Non-Recurrent Expenditure Capitalised</i> . . . . .	32,824.09.62	
<i>Gifts</i> . . . . .	48.15.00	
	<hr/>	33,475.01.12
		951,560.01.27
<i>Percentage Provision for Replacement of Assets at 1st July, 1957</i>		
Gas Plant . . . . .	762 15.69	
Furniture and Equipment . . . . .	9,208 09.17	
Motor Vehicles . . . . .	1,040.03.13	
	<hr/>	11,011.07.99

£962,571.09.26

*Note:* Not all the land on which buildings have been erected, or which is

# COLLEGE OF EAST AFRICA

*Kenneth Kaunda Memorial Academy*

## ACCOUNT

at 30th June, 1958

	£ Sh. Cts.	£ Sh. Cts.
<b>FIXED ASSETS (at cost)</b>		
LAND (freehold and leasehold)	36,271.08.77	
Less: Compulsory Acquisition Charges written off	4,693.18.00	
		31,577.10.77
<b>BUILDINGS</b>	723,464.15.94	
Less: Compulsory Acquisition Charges written off	1,015.19.13	
		722,448.16.81
<b>FURNITURE AND EQUIPMENT—Administrative</b>	18,189.03.82	
—Staff Housing	18,376.02.98	
<b>FURNITURE</b> —Halls of Residence	5,856.17.63	
<b>SUNDRY EQUIPMENT</b> —Academic and Technical	95,835.10.33	
—Administrative	7,007.02.47	
	145,264.17.23	
<b>GAS PLANT</b>	11,693.19.02	
<b>MOTOR VEHICLES</b>	2,373.15.90	
<b>LIBRARY (Exclusive of Gifts)</b>	4,130.15.54	
		163,463.07.69
<b>TOTAL FIXED ASSETS</b>		917,489.15.27
<b>CURRENT ASSETS</b>		
Debtors	12.07.57	
Post Office Savings Bank	24,679.05.90	
Cash at Bank	20,390.00.52	
		45,081.13.99

£962,571.09.26

# ROYAL TECHNICAL COL

*Incorporating the Gan*

**SPECIAL**

**Balance Sheet at**

	£ Sh. Cts.	£ Sh. Cts.
SPECIAL ACCOUNT (Donations for specific purposes received to date).		
<b>DONATIONS</b>		
GANDHI MEMORIAL ACADEMY SOCIETY		
Balance of grant remaining in Special Account . . . . .		100,000.00.00
EAST AFRICAN RAILWAYS AND HARBOURS ADMINISTRATION . . . . .		6,000.00.00
SHELL COMPANY OF EAST AFRICA LTD. AND B.P. (E.A.) LTD. . . . .		2,500.00.00
R. G. AMIN BURSARY		
Bursary Fund . . . . .	325 00.00	
Accumulated Interest . . . . .	82.15.88	
		407.15.88
M. M. BHATT TRUST FUND		
Trust Fund . . . . .	500.00 00	
Accumulated Interest <i>less</i> distributed as prizes . . . . .	18.15.00	
		518.15.00
SUNDRY OTHER DONATIONS		
Donations <i>less</i> expended . . . . .		241.02.93
		109,667.13.81
<b>INVESTMENT INCOME</b>		
Interest accumulated to 1st July, 1957 . . . . .	4,687.16.97	
Interest receivable in year ended 30th June, 1958 . . . . .	4,138.16.92	
		8,826.13.89

£118,494.07.70

# LEGE OF EAST AFRICA

*dhi Memorial Academy*

## ACCOUNT

30th June, 1958

	£ Sh. Cts.	£ Sh. Cts.
INVESTMENTS AT COST		
£51,000.00.00 5 % Kenya Stock 1970/72 . . . . .	50,495.00.00	
318. 2. 6 4½% Kenya Stock 1971/78 . . . . .	325 00 00	
10,000 00 00 5½% E.A.H.C. Stock 1980/84 . . . . .	9,778.02.50	
5,000 00 00 4½% Kenya Stock 1961/71 . . . . .	4,450 00.00	
10,000 00 00 3½% Uganda Stock 1966/69 . . . . .	7,962.10 00	
5,000 00.00 3½% Jamaica Stock 1958/68 . . . . .	4,087.10 00	
30,658. 6. 5 3 % Savings Bonds 1960/70 . . . . .	23,721.17.50	
9,600.00.00 6½% Kenya Stock 1972/74 . . . . .	9,312.00.00	
	<hr/>	110,132.00.00
(Market value of Investments at 30th June, 1958, amounted to £103,102.02.41)		
Post Office Savings Bank . . . . .		82.15.88
		<hr/>
		110,214.15.88
CASH		
At Bank . . . . .		8,279.11.82

£118,494.07.70

# ROYAL TECHNICAL COL

*Incorporating the Gan*

*ENDOWM*

Balance Sheet at

	£ Sh. Cts.	£ Sh. Cts.
ENDOWMENT FUND		
Balance at 1st July, 1957 . . . . .	17,844 14 97	
Grants and Donations received during year ended 30th June, 1958 . . . . .	<u>2,150 00.00</u>	
		19,994.14.97

£19,994.14.97

*Note:* Interest on the Endowment Fund Investments amounting to £675.10.99

# LEGE OF EAST AFRICA

*dhi Memorial Academy*

## ENT FUND

30th June, 1958

	£ Sh. Cts.	£ Sh. Cts.
INVESTMENTS AT COST		
£ 7,133.04.06 East Africa High Commission 4% 1973/76 Stock . . . . .	7,100 00.00	
13,450.17.09 3% Savings Bonds 1965/75 . . . . .	10,000 00.00	
1,690.02.10 3% Savings Bonds 1960/70 . . . . .	1,500 00.00	
	<hr/>	18,600.00.00
(Market value of Investments at 30th June, 1958, amounted to £16,428.17.37)		
CASH HELD PENDING INVESTMENT . . . . .		1,394.14.97

£19,994.14.97

has, in accordance with the College Act, been credited to Revenue Account.



# ROYAL TECHNICAL COL

*Incorporating the Gan*

**REVENUE**

**Balance Sheet at**

	£ Sh. Cts.	£ Sh. Cts.
<b>INCOME AND EXPENDITURE ACCOUNT</b>		
Accumulated Deficit at 30th June, 1957 . . . . .	33,716.12.57	
Net Surplus for the year ended 30th June, 1958 . . . . .	33,949.04.01	
Accumulated Surplus at 30th June, 1958 . . . . .	<u>                    </u>	232.11.44
<b>PROVISIONS at 1st July, 1957</b>		
<i>Leave Provisions</i>		
Passages . . . . .	14,592.02.43	
Reliefs . . . . .	<u>200.00.00</u>	
		14,792.02.43
<i>Maintenance Provisions</i>		
Buildings . . . . .	11,347.09.96	
Furniture and Equipment . . . . .	2,165.13.27	
Gas Plant . . . . .	<u>403.05.41</u>	
		13,916.08.64
<b>CURRENT LIABILITIES</b>		
Staff Provident Fund . . . . .	2,937.18.05	
Government of Tanganyika—Interest-free loan . . . . .	4,500.00.00	
Sundry Creditors . . . . .	<u>37,648.09.99</u>	
		45,086.08.04

£74,027.10.55

# LEGE OF EAST AFRICA

*dhi Memorial Academy*

## ACCOUNT

30th June, 1958

	£ Sh. Cts.	£ Sh. Cts.
ASSETS		
<i>Stores</i>		
On hand, at cost or lower valuation . . . . .		6,237.03.43
<i>Debtors</i>		
Trustees of the Pension Fund . . . . .	754.18.89	
Sundry Debtors . . . . .	32,357.00.95	
	<hr/>	33,111.19.84
<i>Cash</i>		
At Bank and in hand . . . . .		34,678.07.28

---

---

£74,027.10.55

# ROYAL TECHNICAL COL

*Incorporating the Gan*

## Income and Expenditure Account for

	£ Sh. Cts.	£ Sh. Cts.
EXPENDITURE (as detailed):		
Academic Expenditure . . . . .	157,767 . 14 . 98	
Administrative Expenses . . . . .	66,468 06 . 53	
Students' and other Expenses . . . . .	<u>30,313 . 00 . 70</u>	
		254,549 . 02 . 21

£254,549 02 . 21

# LEGE OF EAST AFRICA

*dhi Memorial Academy*

the year ended 30th June, 1958

	£ Sh. Cts.	£ Sh. Cts
INCOME		
<i>Fees Receivable</i>		
Full-time Students—Tuition . . . . .	10,546.13.15	
—Residence . . . . .	21,591.07.56	
	<hr/>	32,138.00.71
Part-time Students . . . . .		7,725.01.08
		<hr/>
		39,863.01.79
<i>Rents Receivable</i>		
Vacation residence . . . . .	63.12.00	
G.C.E. residence . . . . .	340.06.00	
Students' rooms . . . . .	196.13.50	
	<hr/>	
Staff flats and houses . . . . .	600.11.50	
Main Tuition Building and Assembly Hall . . . . .	4,456.17.01	
Sports Ground . . . . .	121.12.05	
	<hr/>	
		5,210.10.56
<i>Catering Sales (Refectory)</i> . . . . .		1,035.9.05
<i>Interest received</i>		
Endowment Fund Investments . . . . .	675.10.99	
Staff Loans . . . . .	117.13.83	
	<hr/>	793.04.82
<b>TOTAL INCOME</b> . . . . .		<hr/> <b>46,902.06.22</b>
GROSS DEFICIT		207,646.15.99
		<hr/> <b>£254,549.02.21</b>
		<hr/> <hr/>
<i>Gross Deficit for year to 30th June, 1958, as above</i> . . . . .		207,646.15.99
<i>Less: Grants received on account during the twelve months from Territorial Governments for Recurrent and Non-Recurrent Expenditure up to 30th June, 1958</i>		
Kenya . . . . .	126,000.00.00	
Uganda . . . . .	67,862.00.00	
Tanganyika . . . . .	44,734.00.00	
Zanzibar . . . . .	3,000.00.00	
	<hr/>	241,596.00.00
		<hr/> <hr/>
<i>Net Surplus</i> . . . . .		<hr/> <b>£33,949.04.01</b>