



**THE ROYAL
TECHNICAL
COLLEGE
OF EAST AFRICA**

Incorporating the Gandhi Memorial Academy





Main Entrance

THE ROYAL
TECHNICAL COLLEGE
OF
EAST AFRICA

*Incorporating
the Gandhi Memorial Academy*

"Calendar 1959-1960"

UNIVERSITY OF NAIROBI
LIBRARY

Telegraphic Address: ROTECEA, Nairobi.

Postal Address: P.O. Box 30197, Nairobi.

Telephone: 23316/7, 24008, 26391 Nairobi, Kenya.

Calendar 1959-1960

CONTENTS

	<i>Page</i>
Almanac 1959-1960	4
General Information	11
Historical Introduction	5
Officers of the College	3
Terms 1959-1960	13
The Governing Council	7
The Board of Studies	10
The Gandhi Memorial Board	10
C.O.C.A.S.T.	8
Details of Courses	
Architecture	14
Department of Art	19
Faculty of Arts	18
Faculty of Commerce	21
Department of Domestic Science	25
Faculty of Engineering	28
Faculty of Science	36
Department of Surveying	33
Department of Mathematics	37
The College Library	38
College Administration	43
Advisory Panels	40
Student Society	46
Prizes, Scholarships and Bursaries	45
Halls of Residence	44
Sports Activities	47

Officers of the College

Visitor

SIR EVELYN BARING, G.C.M.G., K.C.V.O.

Chairman of the Governing Council

THE HON. P. J. ROGERS, C.B.E., M.L.C.

Acting Principal

H. P. GALE, B.A., PH.D. (Lond.), DIP. ED. (Camb.)

Vice-Principal

H. P. GALE, B.A., PH.D. (Lond.), DIP. ED. (Camb.)

Dean (1959)

C. A. JUDSON, B.SC., M.I.MECH.E.

Registrar

G. W. MANFIELD, B.SC. (Lond.)

Almanac 1959-1960

1959

September 30th Closing date for Applications for Admission for Session 1960-1961.

October 7th First Term begins.

„ 13th Meeting of Board of Studies.

„ 24th Anniversary Date of Opening of College.

November 10th Meeting of Board of Studies.

December 8th Meeting of Board of Studies.

„ 16th End of First Term.

1960

January 6th Second Term begins.

General Certificate of Education Examination begins.

„ 13th Meeting of Board of Studies.

February 10th Meeting of Board of Studies.

March 9th Meeting of Board of Studies.

„ 30th End of Second Term.

April 20th Third Term begins.

May 11th Meeting of Board of Studies.

June 8th Meeting of Board of Studies.

„ 13th General Certificate of Education Examination begins.

„ 29th End of Third Term and Session.

July 7th General Certificate of Education Examination ends.

„ 12th Anniversary of the opening of the Gandhi Memorial Academy.

The Royal Technical College of East Africa

Incorporating the Gandhi Memorial Academy

HISTORICAL INTRODUCTION

The Royal Technical College of East Africa is a recent foundation: it was established by an Act of the High Commission on April 24th, 1954, and took in its first students in April 1956. The purpose of the College was to provide academic facilities for higher technological training, for professional training, for research work, and for certain vocational training, and thus to assist in the economic development of the East African Territories. To this end the College has at present Faculties of Engineering, Architecture, Commerce, Arts and Science, as well as Departments of Surveying, of Domestic Science and of Applied Art.

The College is open to all persons without distinction of race or creed and ensures to all its students freedom of worship according to their religious beliefs. It is almost entirely a residential College and seeks through the corporate life of its Halls of Residence to train good citizens and to develop the character and personal integrity of its students.

Historically the College grew out of a plan of the Government of Kenya for the establishment of a Technical and Commercial Institute in Nairobi, drawn up in 1947. By 1949 the plan had grown into an East African concept to provide higher technical education for all the Territories, and Colonial Development and Welfare funds were granted for this purpose. In 1950 the Governor of Kenya, Sir Philip Mitchell, G.C.M.G., M.C., set up a Siting and Building Committee, under the Chairmanship of Mr. Godfrey Willoughby, C.B.E.; while in September 1951 the College was established by Charter as The Royal Technical College of East Africa, His Majesty King George VI giving his consent for this style to be used. In April 1952 Sir Philip Mitchell laid the foundation stone of the present main building in Kingsway.

At this time members of the Asian community in East Africa were also planning a College as a memorial to Mahatma Gandhi and after discussions an agreement was reached whereby the funds subscribed for this Memorial College became vested in the Royal Technical College. The Gandhi Memorial College Committee was registered under the new title of The Gandhi Memorial Academy Society and undertook to collect over £400,000 for the College. The College Council undertook to accept the benefaction, in the interests of higher education in East Africa and for utilisation in the furthering of the original College Departments of Arts, Science

and Commerce. The Gandhi Memorial Society received representation in the government of the College by the establishment of an Advisory Committee, known as the Gandhi Memorial Academy Board, the College Council undertaking to seek the advice of this Board on all matters other than those of academic and administrative routine relating to the three Departments of the Academy. The terms of the incorporation of the Gandhi Memorial Academy with the Royal Technical College are set out in the Act of April 24th, 1954, which replaced the original Charter.

The College opened to students on April 23rd, 1956, and the ensuing term was made an introductory term to the first full academic year, which began in October 1956, when 214 full-time students were admitted.

At the end of the introductory term, on July 12th, 1956, Dr. S. Radhakrishnan, the Vice-President of India, unveiled the lifesize bronze statue of Mahatma Gandhi, at the official opening of the Gandhi Memorial Academy, as part of the College. Then on October 24th, 1956, the College was privileged to welcome Her Royal Highness the Princess Margaret, who formally opened it and inaugurated its academic life as an Institution of Higher Education for East Africa.

The first Principal of the College was Major-General C. Bullard, C.B., C.B.E., who was appointed in June, 1953. General Bullard resigned in March 1957 and Dr. H. P. Gale, then Dean of the College, assumed the duties of Acting Principal. In May 1958 Dr. Gale was also appointed Vice-Principal of the College.

A second Men's Hall of Residence was completed by September 1957, out of funds granted under the Colonial Development and Welfare Act; and funds for a third Hall were granted in September 1958. The College has also two Women's Halls of Residence. Thus by the end of 1959 these will be able to accommodate 300 resident men students and 50 women students.

The first Chairman of the College Council was Mr. Godfrey Willoughby who had played such a vigorous part in the original planning of the College. He was succeeded in 1958 by Mr. J. K. Luard who, however, left East Africa after a short term of office. The Hon. P. J. Rogers, C.B.E., M.L.C., Chairman of the East Africa Tobacco Co. and a serving member of the College Council, then accepted the office of Chairman in July 1958. In July also a Working Party was invited to East Africa by the Governments of the Territories to advise on the pattern of development for Higher Education in East Africa. The Working Party under the Chairmanship of Dr. John Lockwood, Vice-Chancellor of The University of London, reported in March 1959 to the Governments. Among its recommendations was that The Royal Technical College should by measures of reconstruction and by the addition of appropriate facilities be transformed into the second Inter-Territorial University College in East Africa.

The Governing Council of the College

Appointed by

Hon. P. J. Rogers, C.B.E., M.L.C. (Chairman)	East Africa High Commission
To be appointed (Vice-Chairman)	East Africa High Commission
Dr. H. P. Gale (Vice-Principal and Acting Principal)	<i>ex officio</i>
Mr. C. A. Judson (Dean)	<i>ex officio</i>
Mr. J. R. Farquharson	co-opted
Hon. W. A. C. Matheison, C.M.G., M.B.E., M.L.C.	The Governor of Kenya
Lady Sidney Farrar, M.B.E.	The Governor of Kenya
Hon. R. Ngala, M.L.C.	The Governor of Kenya
Mr. C. de N. Hill	The Governor of Tanganyika
Hon. P. Bomani M.L.C.	The Governor of Tanganyika
Hon. W. Wenban-Smith C.B.E., M.L.C.	The Governor of Tanganyika
Hon. G. B. Cartland, C.M.G., M.L.C.	The Governor of Uganda
Mr. J. M. Stock, O.B.E.	The Governor of Uganda
Hon. M. E. Kawalya-Kagwa, O.B.E., M.L.C.	The Governor of Uganda
Mr. A. O. Cosgrove	The East African Association of Engineers
Sir David Lindsay Keir	The Council for Overseas Colleges of Arts, Science and Technology
Mr. E. Baumann	The Associations of Chambers of Commerce and Industry
Hon. J. M. Nazareth, Q.C., M.L.C.	The Gandhi Memorial Board
Alderman I. Somen, M.B.E.	The City Council of Nairobi
Mr. G. D. Wing, M.C.	The Board of Studies
Dr. I. S. Loupekine	The Board of Studies
Mr. J. Roche (co-opted)	The Board of Studies
Mr. H. S. Williams (co-opted)	The Board of Studies
Mr. R. K. Simmonds (co-opted)	The Board of Studies
Mr. G. W. Manfield (Registrar and Secretary)	The Governing Council

The Council for Overseas Colleges of Arts, Science and Technology

In 1949 the Secretary of State for the Colonies set up an Advisory Committee on Colonial Colleges of Arts, Science and Technology to advise him and any responsible authorities in the Colonies on the development of such Colleges, and on the expenditure of Colonial Development and Welfare funds allocated for this purpose.

On the 1st July, 1957, the Committee was reconstituted by the Secretaries of State for the Colonies and for Commonwealth Relations to become the Council for Overseas Colleges of Arts, Science and Technology. The purpose of this reconstitution was to enable the former Advisory Committee's advice and services to Colleges in newly independent Commonwealth Countries, such as Kumasi College in Ghana, to be continued in a modified form. The Committee's advisory functions in relation to the Nigerian College, The Royal Technical College of East Africa, etc., will be carried on as before.

SIR DAVID LINDSAY KEIR, M.A., LL.D., HON. A.R.I.B.A.
(Chairman)

Master of Baliol College, Oxford.

SIR DAVID S. ANDERSON, PH.D., A.R.T.C., F.R.S.E., M.I.MECH.E.
Director, Royal College of Science and Technology, Glasgow.

MR. T. H. BALDWIN, C.B.E., M.A.

Assistant Educational Adviser to the Secretary of State for the Colonies.

Deputy Director of Education, Nigeria, 1944-49.

MR. A. M. CHITTY, M.A., F.R.I.B.A., A.M.T.P.I.

Partner, Messrs. Hening & Chitty, Architects, Surveyors, Town Planning Consultants.

Chairman, Board of Architectural Education 1953-55.

MR. B. COCKRAM, C.M.G., O.B.E., PH.D., M.A.

Head of Department of Information and Cultural Relations, Commonwealth Relations Office. (Alternate member, Mrs. B. M. Chitty.)

SIR CHRISTOPHER COX, K.C.M.G., M.A.

Educational Adviser to the Secretary of State for the Colonies.
Ex-officio member, A.C.E.C., I.U.C., and C.U.G.A.C.

MR. A. W. GIBSON, O.B.E., B.SC. (Tech.), M.I.MECH.E., J.P.

Principal, Dudley and Staffs Technical College.

Hon. Sec., Association of Principals of Technical Institutions.

DR. F. J. HARLOW, O.B.E., PH.D., B.SC, F.INST.P.

Assistant Educational Adviser (for technical education) to the Secretary of State for the Colonies, 1950-56.

Formerly Principal, Chelsea Polytechnic.

A.C.E.C.

- MR. R. J. HARVEY, O.B.E., M.A., B.SC.
 Secretary, Council of the Church Training Colleges.
 Formerly Director of Education, Zanzibar.
 Colonial Office, and Secretary, A.C.E.C., 1949-55.
- MR. J. C. JONES, C.B.E., B.SC., A.M.I.C.E., M.I.MECH.E.
 Assistant Educational Adviser (for technical education) to
 the Secretary of State for the Colonies.
 Formerly Principal, The Polytechnic, Regent Street.
- PROFESSOR S. G. RAYBOULD, B.SC. (ECON.), PH.D.
 Professor of Adult Education and Director of Extra-Mural
 Studies, University of Leeds.
 Visiting Director of Extra-Mural Studies, University College,
 Ibadan, 1954-55. I.U.C.
- DR. J. E. RICHARDSON, PH.D., B.ENG., M.I.E.E., A.M.I.MECH.E.
 Principal, The Polytechnic, Regent Street.
 Formerly Principal, Northampton Polytechnic, London.
- SIR JAMES J. ROBERTSON, O.B.E., M.A., LL.D., B.D., F.R.S.E., J.P.
 Rector, Aberdeen Grammar School.
 A.C.E.C.
- MR. A. M. B. RULE, M.B.E., M.A., LL.B.
 Principal, City of Birmingham College of Commerce.
- MISS M. M. SAUNDERS, M.A.
 Principal, Whitelands College, Putney.
 Formerly Assistant Director of Education, Uganda.
- SIR REGINALD TAYLOR, C.M.G., B.SC. (ENG.), M.I.C.E.
 Engineer in Chief, Crown Agents for Overseas Governments
 and Administrations.
 Director of Public Works, Nigeria, 1947-51, Kenya, 1951-54.
- DR. G. E. WATTS, M.A., PH.D., B.SC., F.R.I.C.
 Principal, Brighton Technical College.
 A.C.E.C.
- MR. I. C. M. MAXWELL, M.A. (Observer).
 Secretary, Inter-University Council for Higher Education
 Overseas.
- MR. H. M. COLLINS, M.A. (Secretary).
- MR. V. H. MOULT, B.A. (Appointments Secretary).

The Gandhi Memorial Board

Appointed by

To be appointed (Chairman)	The Governing Council.
Alderman I. SOMEN, M.B.E.	The Governing Council.
The Dean (Mr. C. A. JUDSON)	The Governing Council.
Hon. J. M. NAZARETH, Q.C., M.L.C.	The Gandhi Memorial Society.
Mr. CHANAN SINGH	The Gandhi Memorial Society.
Hon. C. K. PATEL, M.L.C.	The Gandhi Memorial Society.
Mr. M. D. PATEL	The Gandhi Memorial Society.
Dr. H. P. GALE (Ag. Principal)	<i>Ex officio</i> Member.
Mr. G. W. MANFIELD (Registrar and Secretary)	The Governing Council.

The Board of Studies

Dr. H. P. GALE (Ag. Principal)	Chairman
T. P. le BRIERO	Head of Faculty of Architecture.
G. D. WING	Senior Lecturer (English) and Ag. Head of Faculty of Arts.
H. S. WILLIAMS	Senior Lecturer (Survey).
C. A. JUDSON (Dean)	Head of Faculty of Engineering.
R. K. SIMMONDS	Senior Lecturer (Electrical Engineering).
Dr. I. S. LOUPEKINE	Acting Head of Faculty of Science.
J. BAYNES	Senior Lecturer (Art).
W. RODGERS	Head of Faculty of Commerce.
J. ROCHE	Senior Lecturer (Economics).
Miss E. RICKETTS	Senior Lecturer (Domestic Science).
D. A. R. KEMP	Librarian (Co-opted Member).

Secretary—The Registrar.

General Information

- Applications for Entry:** Application Forms are obtainable from the Registrar and should be completed in duplicate. Entries close on 30th September for Admission in the October of the following year.
- Qualifications for Entry:** In addition to special requirements in some Faculties all candidates must possess a Cambridge Overseas School Certificate (or its equivalent) with at least five Credits, one of which must be in English Language.
- Fees:** Many students obtain Government Bursaries and these are paid directly to the College. The balance of fees due must be paid in accordance with the regulations in force. Students are notified of these prior to joining the College. Bursaries are also awarded by various Trusts, details of which will be available in the College.
- Health:** All students must be in possession of a medical certificate which includes a chest X-ray. Blank certificates for completion by a medical officer are issued with the joining instructions. The College Dispensary is open daily for students requiring medical attention. Medical arrangements for students will be issued with the joining instructions.
- Registration:** On arrival students must register with the Admissions Department, who will issue Student Admission Cards. All formalities for immigration, etc., are dealt with on arrival. Instructions regarding Registration are issued on arrival at the College.
- Photographs:** All students are required to send five copies of a passport-size photograph for College records, prior to joining the College.
- Travel Arrangements:** Arrangements are made with E.A.R. & H. for the bulk movement of all students travelling to the College. Notification of the day and times of trains are contained in the joining instructions.

- Academic Dress:** Students are required to wear academic dress at all times specified by the College. Gowns are obtained on arrival.
- Mail:** The address of the College is:—
The Royal Technical College of East Africa,
P.O. Box 30197,
NAIROBI,
Kenya.
- Visitors:** Visitors are allowed in Hall on Saturdays and Sundays between 2.00 p.m. and 9.30 p.m.
- Lady visitors to the Men's Hall and men visitors to the Women's Hall may be entertained only in the Common Rooms. They are not permitted to enter the residential block.
- Exeats:** Normally students are expected to be in Hall by 10.30 p.m. Late passes may be granted by the Warden. Not more than two such passes will be granted in any one week. In such cases the Late Pass Book, in the Janitor's office, must be signed before leaving and on return.
- The Janitor has instructions to lock all doors, with the exception of the Main Entrance doors, at 7.00 p.m. The Main Entrance doors will be locked at 10.30 p.m.
- Laundry:** A laundry contractor will visit the Men's Hall twice a week for collection and distribution of laundry. The charge per student, irrespective of the quantity sent, is Shs. 13/- per month. Washing and ironing of clothes is forbidden in Hall.

The Royal Technical College of East Africa

Incorporating the Gandhi Memorial Academy

TERMS 1959-60

- First Term: Wednesday, 7th October, to Wednesday,
16th December, 1959.
- Second Term: Wednesday, 6th January, to Wednesday,
30th March, 1960.
- Third Term: Wednesday, 20th April, to Wednesday,
29th June, 1960.

The Faculty of Architecture

<i>Head of Faculty</i>	T. P. le BRIERO, A.R.I.B.A.
<i>Senior Lecturer, Architecture</i>	J. C. B. PRICE, B.A. (ARCH.), A.R.I.B.A.
<i>Lecturer, Architecture</i>	D. L. D. MORGAN, A.A. DIPL., A.R.I.B.A.
<i>Lecturer, Architecture</i>	M. G. MUNDAY, DIP. ARCH. (Leics.) A.R.I.B.A.
<i>Assistant Lecturer, Building Science</i>	E. BULL
<i>Technical Staff, Technical Assistant</i>	M. A. A. SADARUDDIN

Faculty Entrance Requirements

All candidates applying for admission to the Faculty of Architecture must possess the Cambridge Overseas School Certificate (or its equivalent) with credits in at least five subjects, two of which must be English Language and Mathematics. Drawing ability with greater emphasis on draughtsmanship is also an added qualification. Approved subjects are as follows:—

- A modern Language other than English
- Physics
- Chemistry
- Physics with Chemistry
- Mechanics, Mechanical Science or Applied Mathematics
- General Science
- History
- Geography
- Economics
- Latin
- Greek
- English Literature
- Art

COURSES OFFERED IN THE FACULTY OF ARCHITECTURE

The Royal Institute of British Architects controls both the training of Architects and the Practice of Architecture in Great Britain under successive charters granted since the year 1837 by King William IV, Queen Victoria, King Edward VII and King George V, and contains in its membership the majority of qualified Architects of the Commonwealth. It is supported by a confederation of allied societies and branches of which there are 75 in Great Britain and Ireland and 35 in the Commonwealth overseas.

Membership of the Institute comprises Fellows, Associates and Licentiates, in addition to certain honorary members and to students and probationers. Its Board of Architectural Education controls architectural teaching in Great Britain and other centres and conducts the Intermediate and Final Examinations which qualify for Associate Membership and for registration under the Architects Registration Act 1931-38 in Great Britain, and under the Architects and Quantity Surveyors Registration Ordinances in force in British East Africa. (These, and similar enactments in South Africa and elsewhere, restrict professional practice under the title of Architect to those who have been admitted to a legally constituted Register.)

Membership of the R.I.B.A. is restricted to British Nationals or British Protected Persons. However, students of other nationalities may sit for the R.I.B.A. examinations and in the event of their being successful may obtain a certificate to that effect from the Institute.

(a) *Intermediate Course*

The full-time Intermediate course extends at present over three years. At the end of the course the portfolio of work set by the Faculty is assessed by Examiners appointed by the East Africa Institute of Architects for exemption from the normal R.I.B.A. Testimonies of Study.

Students whose portfolios are approved will sit for the Intermediate Examination of the R.I.B.A. The East Africa Institute of Architects has agreed to conduct this in a form modified (in respect of the papers in Design and Construction) to take account of climatic and other conditions in East Africa. The whole Examination will be subject to scrutiny by the R.I.B.A.

The first year of study will be probationary. During the long vacations, from the second year onwards, students will be expected to enter the offices of practising Architects in order to gain practical experience.

(b) *Final Course*

A Sandwich Course leading to the Final Examination of the R.I.B.A. and comprising five terms spent in College, followed by one year in office employment and one further term in College, has been instituted in continuation of the Intermediate Course on successful completion of this course and, in accordance with current R.I.B.A. Regulations, students will spend a further year in an office and then sit a professional practice examination leading to associate-ship of that Institute. For the time being, Studio work on the R.I.B.A. Testimonies of Study will be submitted to the R.I.B.A. for approval (by stages).

Students whose Testimonies receive approval will sit for the Final Examination of the R.I.B.A.

Syllabus

Intermediate Course

First Year

Lecture Courses: History of Culture, History of Architecture, History of Art, Building Construction, Theory of Building, Theory of Structures, Building Science (Materials), English.

Studio Work: Geometrical Drawing, Graphic Design, Lettering, Sciagraphy, Perspective, Elementary Design and Construction, Exercises in Colour and Textures, Freehand and Life Drawing, Modelling and Sculpture.

Site Visits: Visits will be paid to buildings in course of erection.

Second Year

Lecture Courses: History of Culture, History of Architecture, Building Construction, Building Science and Materials, Building Services, Theory of Structures, Survey.

Studio Work: Architectural Planning and Design. Working Drawings, Survey and Measured Work, Interior Design, Life Drawing and Studies of Natural Forms, Modelling and Sculpture.

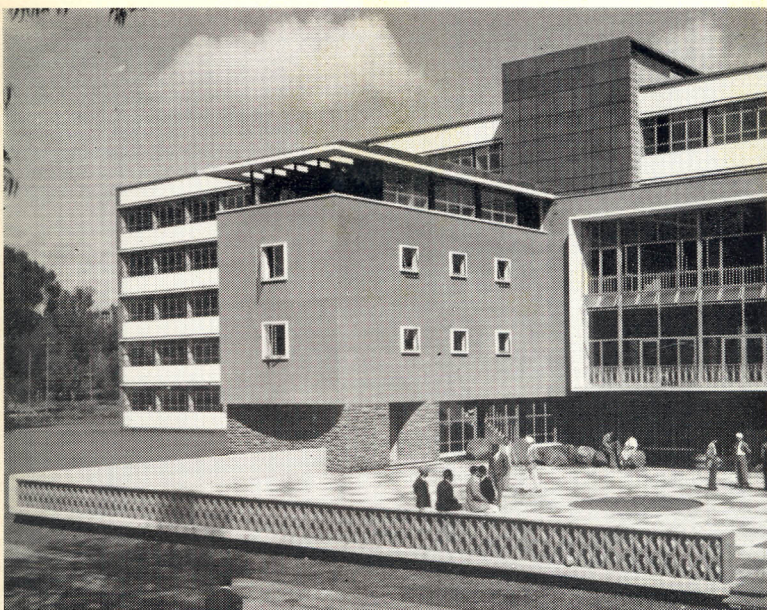
Site Visits: Visits to building sites will continue.

Third Year

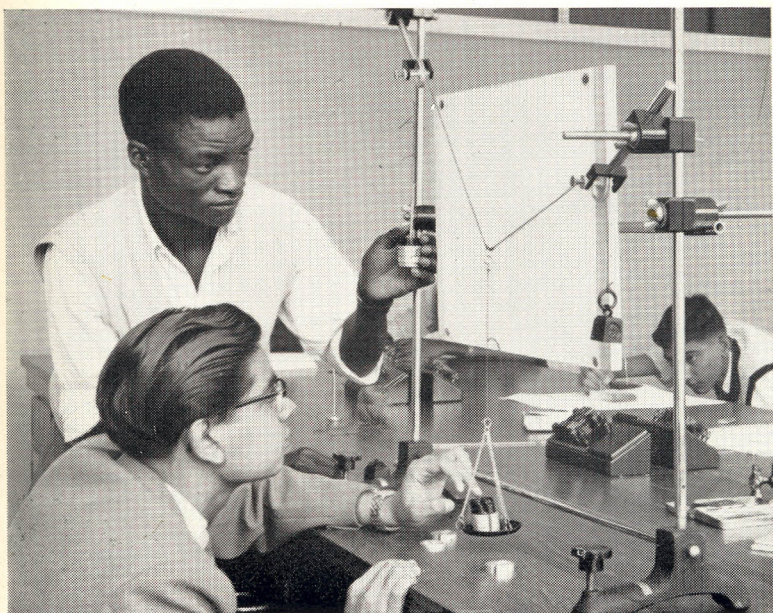
Lecture Courses: History of Culture, History of Architecture, Building Construction, Building Science including Sound Insulation, Acoustics, Building Services, Theory of Structures.

Studio Work: Architectural Planning and Design, Working Drawings, Interior Design, Site Layout and Garden Design.

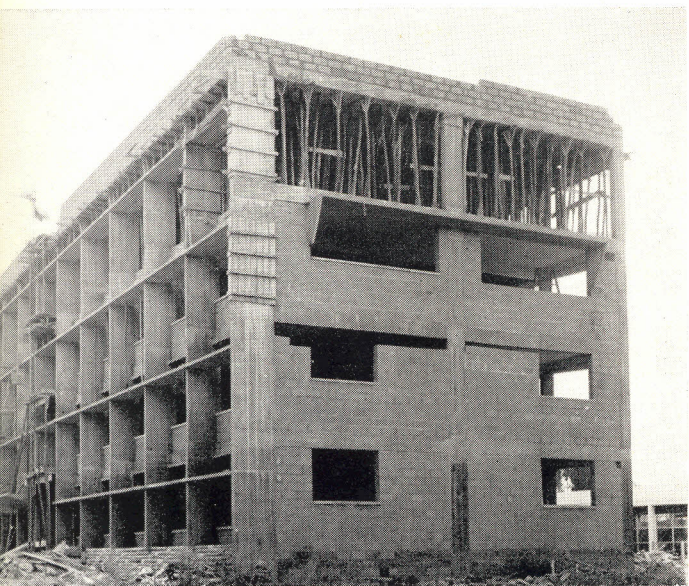
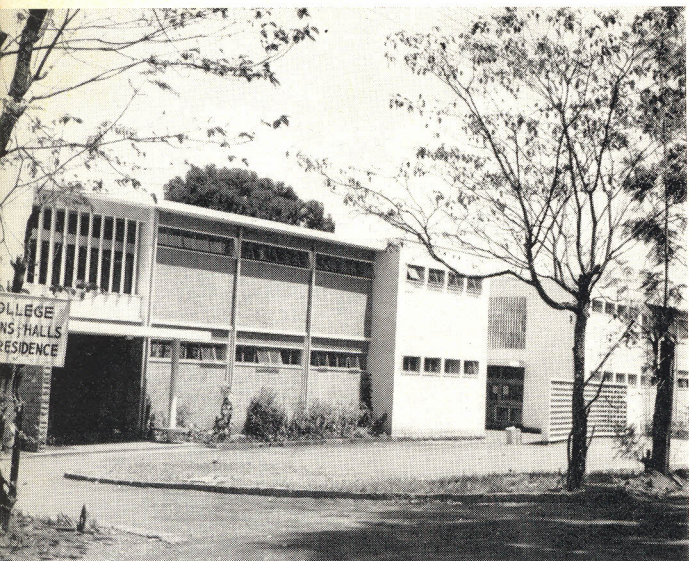
Site Visits: As in previous years.



The main Tuition Building



Students in the Physics Laboratory



New American Wing under construction

Faculty of Arts

*Senior Lecturer, English,
and Acting Head of
the Faculty*

G. D. WING, M.C., M.A. (Durham).

*Senior Lecturer, English
Lecturer, English*

E. WRIGHT, M.A. (London).

A. H. W. MacBEAN, O.B.E., M.A. (Camb.).

*Assistant Lecturer,
English*

Miss V. J. MORRISON, M.A. (T.C.D.).

*Assistant Lecturer,
English*

Mrs. J. F. WALLWORK, B.A. (Manchester).

Lecturer, Geography

W. T. W. MORGAN, M.SC. (ECON.) (London).

*Assistant Lecturer,
Geography*

R. A. BULLOCK, B.A. (Belfast).

Lecturer, History

G. H. MUNGEAM, M.A. (Oxford).

*Assistant Lecturer,
History*

J. A. KEIRAN, B.A. (Liverpool).

Note on Entry Requirements

There are no special *additional* requirements but candidates are advised that it will be very difficult to gain admission to this Faculty unless good credits are obtained in three of the following four subjects:—

English
Geography
History
Mathematics

COURSES OFFERED IN THE FACULTY OF ARTS

At the present moment a course of two years is given in the Faculty of Arts leading to the following examination:—

General Certificate of Education (Advanced) of the University of London.

Reference should be made to the regulations for University of London courses which are published separately.

Selection of Subjects

The selection of subjects of study made by students requires the approval of the Head of Faculty. At this stage subjects of study are English Literature, Geography, History, Mathematics and Economics.

The Department of Art

<i>Head of Department</i>	JOHN BAYNES, A.R.C.A.
<i>Lecturer</i>	UNA BAYNES, A.R.C.A.
<i>Asst. Lecturer</i>	DAVID C. BROADHEAD, A.R.C.A.
<i>Visiting Lecturer</i> (<i>Modelling and Sculpture</i>)	C. MICHELS.

The Department of Art runs two main courses:—

- (i) A four-year course for Specialist Teachers of Art in secondary and other schools, and
- (ii) A course in Graphic Design (i.e. Commercial Art or Advertising Art) which lasts for three years.

Part-time courses may be arranged for teachers and others already engaged in teaching, etc., to improve their standards.

The following subjects occur more or less in the courses run by the Department:—

Life Drawing and Painting. These subjects are the “grammar” of all graphic art. They are, therefore, fundamental to all study in the Department. All students must take Life Drawing whatever their course.

General Drawing. This includes a variety of subjects including Anatomy and Perspective. These subjects are carried out in various media designed to give versatility to the student and an appreciation of the tactile properties of the various media.

History of Art. Formal lectures in this subject are intended to foster an intelligent and critical appreciation rather than a chronological sequence of historical phenomena.

Modelling. All full-time students take modelling for one half-day weekly for part of their courses.

Design and Craft. The word “Design” as used here covers a very wide field. In general, the design on paper is the result of an appreciation by the student of the possibilities and the limitations of techniques such as weaving, mural design, textile design, etc.

Graphic Design. This subject includes all forms of design for printed publicity. A knowledge of the most common printing techniques is taught and some knowledge of typography also in order that the printing of designed material is possible. This group of subjects also includes Book Design.

The first year of the Teacher Training Course for Specialist Teachers of Art covers a broad field of subjects in its time-table. As well as formal drawing it contains several crafts which are of great value to the future teacher. The whole course, in fact, strikes a balance between Crafts, Drawing and Design.

Advertising is widespread, it demands the attention of the citizen in all places and at all times. Its effect on public taste is very considerable so that it is necessary that all kinds of advertising should reflect good standards of taste and civic good manners. The architect and the designer are important members of any community.

The course in Graphic Design is arranged for those wishing to take up posts in commerce and industry connected with advertising; it covers all relevant subjects dealing with the designing of printed publicity. Before the Department of Art was established all those engaged in this form of publicity were expensively brought into East Africa from abroad for short periods of service with various advertising agencies. Now it is possible to supply these trained designers locally. In Europe and elsewhere publicity of various kinds has become a major industry and it may be assumed that the same growth will take place in East Africa. Indeed, it is already taking place.

During the first year of this course the student carries out a general programme including Life Drawing, but later some of these subjects are relinquished in the second year while in the third year the field is narrowed still more leaving Graphic Design in its various forms as the dominant subject.

In this Department there are the beginnings of a flourishing and lively section of textile design. This should be of particular interest in East Africa where there is a large market for such printed textiles.

The Department of Art serves the Faculty of Architecture and the Department of Domestic Science.

The Faculty of Commerce

<i>Head of Faculty</i>	W. RODGERS, M.A. (HONS.); B.M.I.M., M.O.M.A., F.R.ECON.S.
<i>Senior Lecturer, Economics</i>	J. C. ROCHE, M.COM., M.B.I.M.
<i>Senior Lecturer, Accountancy</i>	R. ELLMER, M.A., A.C.A., A.C.I.S.
<i>Lecturer, Law</i>	A. ST. J. HANNIGAN, M.A., LL.B., Barrister-at-Law.
<i>Lecturer, Economics</i>	P. LOMAS, B. COM. (HONS.)(Dunelm), M.COM. (Rand).
<i>Lecturer, Economics</i>	K. G. V. KRISHNA, M.A.(ECON.).
<i>Lecturer, Accountancy</i>	To be appointed.
<i>Assistant Lecturer, Law</i>	S. N. WARUHIU, B.A., LL.B., Barrister-at- Law.

FULL-TIME COURSES

1. *Chartered Institute of Secretaries to Intermediate Level*

The course is of two years' duration, at the end of which students are entered for the Intermediate examination of the Chartered Institute of Secretaries in the subjects:—

Accountancy
Economics
General Principles of English Law
Company Law
Secretarial Practice
English Language

In addition to these examination subjects, students receive practical instruction in Business Procedure, Office Methods, etc., and are assisted to obtain further practical experience through temporary employment in suitable business or professional firms during the long vacation.

While the basic purpose of the course is the provision of academic training for eventual employment as Company Secretaries, the content of the course is such that a valuable training is given also for eventual employment as accountants or executives in industry, commerce, central or local government.

Upon the successful completion of the Intermediate examination, students will be able to proceed to the Final examination of the Institute by attendance at part-time classes provided by the College (see separate Prospectus of Part-time Courses obtainable from the Registrar of the College) while obtaining practical experience in suitable employment.

Upon the successful completion of the Final examinations, students will be eligible to apply to the Institute for professional membership as Associates, which will normally be granted after a further qualifying period when they may use the designation A.C.I.S.

2. *Diploma Course in Accountancy*

In East Africa it is difficult to obtain an internationally recognised professional qualification in accountancy because the only recognised institution which conducts examinations in these territories, the Association of Certified and Corporate Accountants, insists that its student members should be in approved employment, preferably under the tutelage of a qualified accountant, of whom there is a scarcity in many parts of East Africa. For this reason the College has decided to introduce this Diploma course for students who are otherwise unable to obtain a professional qualification in accountancy, particularly those employed in government service.

The academic level of the course will be equivalent to that of the examinations of the Association of Certified and Corporate Accountants, and arrangements are being made for examiners of that body in selected subjects to act as external assessors of the College examinations, so that standards may be maintained at a suitable level.

The actual subjects, however, will not be the same. The detailed treatment of such subjects as the Law and Accounts relating to Executors, Liquidators and Receivers will not appear and the more advanced Partnership and Company Accounts will be replaced by Government Accounts. In addition, students will be taught and examined upon the law and practice relating to the East African territories, with reference to that of the United Kingdom where appropriate.

The course extends over three years and vacation employment, arranged partly in government offices, is regarded as an essential feature of the course in order to supplement academic instruction by practical experience. It is hoped that the Public Service Commissions of the East African territories will accept the College Diploma after a further qualifying period as equivalent, for salary purposes, to a recognised professional qualification.

Later it may be possible to modify this course to provide also for the needs of students who desire to become accountants in industry or commerce.

COURSE SYLLABUS

- 1st Year:* Accountancy: Economics: Principles of Law: Office Routine and Commercial Practice.
- 2nd Year:* Accountancy: Costing and Statistics: Auditing: Mercantile Law: Banking and Finance: English Language.
- 3rd Year:* Government Accounts: Internal Auditing: Taxation and Public Finance: Public Administration: Office Supervision.

3. Proposed Diploma Course in Business Administration

This course extends over three years and is designed to provide students of more than average intelligence, of sound character, of good personality and with the aptitudes needed for a business career, with the background knowledge appropriate to those aspiring eventually to executive positions in industry and commerce.

In addition to lectures, there will be arranged works visits, films on industrial topics, talks by businessmen, and temporary employment with suitable firms will be arranged during long vacations to provide some practical experience of business conditions. The course throughout will be based upon the particular requirements of the development of East Africa, although reference will also be made to conditions in the United Kingdom and elsewhere.

In order to maintain academic standards, arrangements are being made to invite examiners of the British Institute of Management to act as external assessors of the examinations in the final year of the course.

Further information will be published at a later date in respect of this course.

- 1st Year:* Business Economics: Modern Economic History: Social and Economic Geography: English Language: Book-keeping: Elements of Law.
- 2nd Year:* Economic Theory: Applied Economics: Economic History: Accountancy: Statistics: Law: English Language.
- 3rd Year:* Business Administration: Industry and Trade: Labour: Business Finance and Cost Control.

PART-TIME AND SHORT COURSES

Full details of these are contained in the Prospectus of Part-time Courses in the Faculty of Commerce, obtainable on demand from the Registrar of the College.

Part-time courses commence on the third Monday of September in each year and continue until the date of the appropriate professional examination. Classes are held on either three or four evenings weekly between 5 and 7 o'clock except in the case of certain courses which meet on one full day of each week. Courses are available in Accountancy, Banking, Company Secretaryship, Cost Accountancy, Office Supervision, Transport and Business Administration.

Short courses for Senior Executives in various functional aspects of management are arranged during College vacations on a residential basis. Courses have already been provided on the following topics:—

“Industrial Relations and Negotiations”: “Marketing”:

“Financial Control in Management”: “Management Problems of the Small Firm”

and it is hoped that the following may be provided in the future:—

Human Relations in Industry
Personnel Management
Office Management
Purchasing and Stock Control
Work Study
Training Techniques

Department of Domestic Science

<i>Senior Lecturer in Charge</i>	Miss E. RICKETTS, B.SC. (H. & S.S.) (London), TEACHER'S DIPLOMA (London), M.R.S.H.
<i>Lecturer in Home Management</i>	Miss A. WARD, TEACHER'S CERTIFICATE (University of Manchester and Liverpool and Associated Training College), (DOMESTIC SUBJECTS).
<i>Lecturer in Education</i>	Dr. S. N. DESAI, B.A. (Bombay), PH.D. (London).
<i>Assistant Lecturer in Cookery</i>	Mrs. E. J. PHILP, DIPLOMA 1 (Endorsement for Needlework), TEACHER'S DIPLOMA (Advanced Cookery) (Edinburgh College of Domestic Science). CORDON BLUE (Paris).
<i>Assistant Lecturer in Needlework</i>	Miss K. WOOLFALL, TEACHER'S CERTIFICATE—DOMESTIC SUBJECTS (ADVANCED NEEDLEWORK & DRESS-MAKING) (University of Liverpool and Associated Training Colleges).

Science and English Lectures are given by staff of the Faculties of Science and Arts, and Art by staff of Department of Art.

Entrance Qualifications

Normal entrance qualification. In addition to English Language, the following subjects at Credit standard are recommended:—

Chemistry or General Science or
Physics with Chemistry.

A good knowledge of Science is important for the better understanding of the principles of the basic subjects.

There are also opportunities for the girl with artistic ability to apply these qualities in correlating Art to Domestic Subjects.

It is not necessary to have taken Domestic Subjects before entry.

COURSES OFFERED IN THE DEPARTMENT OF DOMESTIC SCIENCE

The department is training Teachers of Domestic Science. The course is for three years with a qualifying College Diploma based on the standard required in the United Kingdom. Students gaining the Diploma will be qualified to teach in the first instance to Secondary School standard.

The equipment used is of the variety which might be found anywhere in East Africa.

Subjects

1. Education

- (a) Educational psychology.
- (b) Aims and principles of Education.
- (c) Historical background.
- (d) Child study and its application to school and family life.
- (e) Teaching methods especially as they apply to Domestic subjects and Health Education.
- (f) Practical Teaching in urban and provincial schools.

2. English

- (a) The extension of ability in the general use of the English language.
- (b) Spoken English.
- (c) Reading—general background and development of appreciation.

The approach has been designed to relate to the particular needs of the teacher under training and the work she will have to do.

The above subjects continue through the three years of the course.

3. Cookery—Theory and Practice

- (a) A study of foods.
- (b) The use of basic recipes.
- (c) The preparation and serving of household meals with special reference to cost, timing, conserving, nutritive values, etc.
- (d) The choice, care and use of cookery equipment of all types.
- (e) Development of manipulative skill.
- (f) Cooking with various fuels for different circumstances.

4. Housecraft

- (a) Planning and construction of the home.
- (b) The care of the house and its contents.
- (c) Care of the family.
- (d) Simple household accounts.
- (e) Food—kitchen hygiene.
- (f) Practical experience in management of a flat.

5. Laundrywork

- (a) Care of household and personal linen.
- (b) Knowledge of fibres, fabrics, development of textile industries.
- (c) Knowledge of materials and equipment used in home laundrywork.
- (d) Manipulative skill in finishing.

6. *Needlecraft*

- (a) Knowledge of equipment, materials, etc.
- (b) Pattern drafting and adaptation of trade patterns.
- (c) Stitches and processes used in Needlework and Dressmaking.
- (d) Making of garments for children and adults.
- (e) Development of manipulative skill.
- (f) Preparation of teaching equipment.

7. *Science*

- (a) Physics—knowledge of simple pure physics.
- (b) Chemistry— “ ” “ ” chemistry.
- (c) Biology—with some physiology.

8. *Art*

- (a) Basic knowledge of design, pattern, colour and its application to household articles.
- (b) Lettering.
- (c) Preparation of visual aids for teaching.

There will be an examination in these subjects towards the end of the 2nd Year.

9. *Nutrition*

- (a) Basic human needs.
- (b) A study of the characteristics of East African dietaries especially as regards the above needs.
- (c) Food Science.

10. *Health Science*

- (a) Health and disease.
- (b) Personal hygiene.
- (c) Spread, prevention, treatment of disease especially of those prevalent in East Africa.
- (d) Social aspects.

11. *Applied Science*

12. *Home Management*

- (a) Correlation of the crafts Cookery, Laundrywork, Housecraft and Needlecraft to home and family living.
- (b) Use of practice flat especially in relation to teaching.
- (c) Budgeting for various income levels.
- (d) Social studies including visits in connection with these, demonstrating and lecturing to adults, social group work.
- (e) Upholstery and allied furnishing crafts.
- (f) Applied Art.

These subjects with English, Education and Teaching Practice are examined towards the end of the 3rd Year.

The Faculty of Engineering

<i>Head of Faculty</i>	C. A. JUDSON, B.SC., M.I.MECH.E.
<i>Senior Lecturer</i> (Civil)	C. P. VIVIAN, B.SC. ENG. (London), A.M.I.C.E.
<i>Lecturer</i>	Post Vacant.
<i>Lecturer</i>	P. A. CAMPBELL, B.SC. ENG. (Rand), A.M.I.C.E., A.M.I.STRUCT.E., A.M.(S.A.)I.C.E., M.CONSE.
<i>Assistant Lecturer</i>	K. G. DANEE, B.SC. ENG. (London), GRAD. I.C.E., GRAD.I.STRUCT.E.
<i>Senior Lecturer</i> (Electrical)	R. K. SIMMONDS, B.SC. ENG. (London), A.M.I.E.E., A.M.BRIT.I.R.E., A.M.INST.E., MEM (AMER.) I.E.E.
<i>Lecturer</i>	R. A. FORREST, DIP.E.E., GRAD.I.E.E.
<i>Lecturer</i>	P. G. BHAGWAT, B.SC. ENG. (London), A.M.I.E.E.
<i>Assistant Lecturer</i>	Post Vacant.
<i>Senior Lecturer</i> (Mechanical)	S. R. LAMMOND, B.SC. ENG. (London), A.M.I.MECH.E.
<i>Senior Lecturer</i> Workshops	B. GRINDROD, A.M.INST. OF AUTO & AERO ENGINEERS (N.Z.), A.M.(N.Z.) INST. OF WELDING, A.(N.Z.) INST. OF IND. MANGMT., M.S.A.E.
<i>Lecturer</i>	Post Vacant.
<i>Lecturer</i>	Post Vacant.
<i>Assistant Lecturer</i>	A. ALLSOP, A.M.I.E.I., GRAD. INST. PROD. E.

Although there are many branches of engineering, the three basic divisions are Civil, Electrical and Mechanical; and it is to satisfy this demand that the courses in the Faculty of Engineering are planned. The training of an engineer, whether he be Civil, Electrical or Mechanical, must be practical as well as academic. This is particularly necessary in a country such as East Africa, which has not built up the engineering traditions existing in more highly developed countries. This important point is fully appreciated by the staff of the College. The courses have been planned so that sufficient practical work is included for the student to supplement his theoretical studies and so that successful students will be able to fill the positions in industry and in public and government service which the development of East Africa requires.

In order that students may gain an internationally recognised qualification they sit not only the College examinations but also those of the appropriate professional Institution. However, it must be mentioned that before a man can become a corporate member of one of these Institutions he must also have had suitable practical training and have held a post of responsibility for a suitable period.

The courses at the College include a considerable amount of practical work in the laboratories and workshops, and students are

also expected to spend the major portion of their long vacation engaged in practical work in their particular branch of Engineering. In this connection the co-operation of engineering employers in the territories has been sought, and the response has been excellent. Negotiations are also in hand for students to obtain a suitable post-graduate apprenticeship on the successful completion of their course at the College.

The Laboratories of the Faculty are well equipped for experimental testing and research work in the subjects of heat engines, hydraulics, applied mechanics, properties and strength of materials, theory of machines, structures, surveying and levelling, soil mechanics, electrical power and machines, electronics and telecommunications, electrical theory and measurements, metallurgy, heat treatment and non-destructive testing.

The Workshops in the Faculty are also provided with up-to-date plant and equipment for the study of machine tools, various manual techniques, forging and sheet metal work, oxyacetylene and electric welding and metrology.

The Drawing Offices and Print Room are equipped in accordance with present-day practice.

Students entering the Engineering Faculty will be expected to provide themselves with suitable overalls for all workshop and certain laboratory classes, drawing instruments, slide rules, specified text books and other equipment as may be required.

FIVE-YEAR DIPLOMA COURSES

Five-year courses in Civil, Electrical and Mechanical Engineering are offered, and additional courses will be included as necessary. These courses lead to the College Diploma and to the examinations of the appropriate professional Institution.

Entrants to these courses must satisfy the minimum educational requirements laid down by the Governing Council of the College. Those offering the Cambridge Overseas School Certificate as an entry qualification require credits in English Language, Mathematics and either two science subjects or one science subject and an approved foreign language; although it must be emphasised that this does not necessarily give entrance to the course.

In addition to the internal examinations, students will, in April of their third year, sit the Joint Part I examination of the Institutions. The subjects of this examination are:—

Mathematics

Applied Mechanics

Principles of Electricity

Heat, Light and Sound

Engineering Drawing

English (from which a credit in English Language in the Cambridge Overseas School Certificate Examination carries exemption)

During the fourth and fifth years students will also sit further examinations of the Institutions, and at the end of the fifth year the College Diploma examination.

In the first year of the course all students take the same subjects, but they must decide which branch of Engineering they wish to follow before entering the second year, since the work becomes more specialised with each succeeding year of the course.

The curricula of the College Diploma Courses are as follows:—

First Year: Civil, Electrical and Mechanical Engineering

Mathematics
Physics (Light and Sound)
Chemistry
Engineering Drawing, Sketching and Graphics
Applied Mechanics
Applied Heat
Principles of Electricity
Workshop Technology and Practice
English

Second Year: Civil, Electrical and Mechanical Engineering

Mathematics
Physics (Light and Sound)
Chemistry
Engineering Drawing, Sketching and Graphics
Applied Mechanics
Applied Heat
Principles of Electricity
English
Surveying and Levelling

Second Year: For Civil Engineering only

Structures
Additional Surveying and Levelling

For Electrical Engineering only

Electrical Installations

For Mechanical Engineering only

Workshop Technology and Practice

Third Year: Civil, Electrical and Mechanical Engineering

Mathematics
Chemistry
Physics (Light and Sound)
Engineering Drawing, Sketching and Graphics
Applied Mechanics
Applied Heat
Principles of Electricity
English

For Civil Engineering only

Structures

Surveying and Levelling

For Electrical Engineering only

Electrical Installations

For Mechanical Engineering only

Workshop Technology and Practice

Fourth and Fifth Years

For Civil Engineering

Theory and Design of Structures

Surveying

Hydraulics

Engineering Geology

Soil Mechanics

Properties of Engineering Materials

Civil Engineering Contracts, Specifications and Quantities

Public Health and Road Engineering

Civil Engineering

Strength of Materials

History of Civil Engineering

Aesthetics

Economics of Engineering

For Electrical Engineering

Electrical Theory and Measurements

Electronics and Telecommunications

Electrical Power and Machines

Mathematics

Industrial Administration

Thermodynamics

Mechanical Technology

Advanced Electrical Engineering

Electricity Supply

Electrical Machines .

Electronics

For Mechanical Engineering

Theory of Machines

Strength of Materials

Applied Thermodynamics

Mechanics of Fluids

Industrial Administration

Drawing and Design

Mathematics

Instrumentation and Applied Electronics

Materials and Metallurgy

Structures

Workshop Technology

Research Project

It must be emphasised that success in the foregoing College examinations and in the Institutions' examinations does not automatically qualify a candidate for Corporate Membership of his chosen Institution.

To attain this qualification he must also satisfy the requirements of adequate practical experience, professional training and status as determined by the Institution concerned before its Council will consider accepting him as a Corporate Member.

Success in the final College examination will qualify a student for the College Diploma.

PART-TIME AND EVENING COURSES

In view of the development of the Kenya Technical Institute, the subject of Part-time and Evening courses is under consideration.

Department of Surveying

<i>Senior Lecturer and Head of Department Lecturer Land Surveying Lecturer Quantity Surveying</i>	H. S. WILLIAMS, B.SC.(ENG.) Rand, L.(S.A.), L.S.(Kenya), M.L.I.S., M.S.C., M.I.M.S. A.R.I.C.S.; P. HARTOG, B.SC., B.SC. (ENG.) Rand, L. (S.A.), L.S.(Kenya), A.R.I.C.S. J. T. E. JONES, A.R.I.C.S., A.I.Q.S.
---	---

COURSES OFFERED IN SURVEYING

(i) The courses being conducted are initially of five academic terms' duration on a full-time basis, and lead to the appropriate First Professional Examination of the Royal Institution of Chartered Surveyors in the Quantity, Land, Building and Valuation Sections.

(ii) For students successful in the First Examinations, two-year courses are mounted leading to the Intermediate Examinations of the R.I.C.S. in the Land and Quantity Surveying Sections. Provision will be made for post First Examination courses in the Building and Valuation Surveying Sections when the demand arises.

(iii) Courses for the Final Examinations of the R.I.C.S., when mounted, are expected to be on a part-time basis.

Date of Commencement of Courses and of Examinations

Courses for both First and Intermediate Examinations of the R.I.C.S. commence annually during the first week in October. Candidates are entered for the March/April examinations five academic terms after the commencement of the courses in all cases.

Admission and Eligibility for Examinations

Candidates must be qualified for exemption from the preliminary examination of the Royal Institution of Chartered Surveyors, i.e. they must possess a School Certificate with credits in the subjects English Language, Mathematics and three others, which should include Physics, Physics-with-Chemistry or General Science for those wishing to read for the Land Surveying Section, or they must have passed the General Certificate of Education at Ordinary Level in at least five subjects which must include English Language and Mathematics and a Science subject as stated above. At least three of the subjects must have been passed at one and the same examination.

Normally, a candidate studying for the Institution's examinations must be engaged in that branch of the profession in which he is desiring to qualify and advice should be sought to ascertain that the office in which he is working, or proposes to enter, is one in which he will obtain the training appropriate to the section in which he intends to qualify and practise. The above ruling of the Council of the

R.I.C.S. is relaxed for students attending full-time courses at approved Colleges. Such provisional approval has been accorded to the First Examination courses of this College and negotiations are in progress to have this recognition extended and also to obtain approval to full-time Intermediate courses which are scheduled to commence in October 1959.

Full-time College students are required to devote as much of their vacation time as possible to acquiring professional experience under the supervision of qualified surveyors. Every effort is made to assist students to find suitable vacation employment.

Curricula of the Professional Examinations

First Examination

The subjects to be taken by students proceeding later to the Intermediate Examination in the Quantity, Building and Valuation Surveying Sections are as follows:—

- Surveying and Levelling
- Mensuration and Trigonometry
- Building Construction
- Draughtsmanship
- Book-keeping
- Central and Local Government
- Law of Property (1)
- Economics (1)
- Law of Contract and Tort

For students wishing to take the Intermediate Examination in the Land Surveying Section the subjects are:—

- Chain Surveying and Levelling
- Plotting and Fair Drawing
- Map Reading
- Pure Mathematics
- Applied Mathematics
- Physics

In addition to the above, candidates will be required to attend an introductory course in Spherical Trigonometry during the 3rd and subsequent terms.

Intermediate Examinations

The subjects to be taken by candidates in the appropriate sections are:—

Quantity Surveying Sections

- Building Construction (II) Typical Subject, two papers
- Quantities (I) two papers
- Drainage and Sanitation
- Dilapidations
- Heating, Ventilating and Electrical Installations
- Building Contracts
- London Building Acts and By-laws

Land Surveying Section

Large Scale and Engineering Surveying
Computations
Land Registration
Topographic Surveying, Part I
Topographic Surveying, Part II
Geodesy and Field Astronomy

Candidates in this section will also be required to complete a second course in Mathematics.

Final Examinations

For further information regarding these examinations the following booklets, obtainable from the Secretary, The Royal Institution of Chartered Surveyors, 12 Great George Street, London, S.W.1, should be consulted:—

- (i) Candidate's Guide to the Professional Examinations.
- (ii) Rules and Syllabus for the Professional Examinations.
- (iii) List of Subjects and Syllabus for the Land Surveying Section.

Facilities available for Land Surveying Students to present themselves for the General Certificate of Education Examinations of London University at Advanced Level

Students in the Land Surveying Section who wish to present themselves for the above examinations in the subjects Pure Mathematics, Applied Mathematics and Physics will be given the opportunity of remaining in residence after the R.I.C.S. First Examination in March/April to prepare for the G.C.E.(A) examinations in June.

UNIVERSITY OF NAIROBI
LIBRARY

The Faculty of Science

Senior Lecturer

(Geology) and Acting

Head of the Faculty

Lecturer, Biology

Lecturer, Biology

Lecturer, Chemistry

Lecturer, Chemistry

Lecturer, Physics

Lecturer, Physics

I. S. LOUPEKINE, B.SC. (Bristol), PH.D.

M. J. COE, B.SC. (London), M.I.BIOL.

J. B. SALE, B.SC. (London), M.I.BIOL.

N. C. DESAI, B.SC., M.SC. (Bombay), PH.D.
(London), A.R.I.C.

G. A. HERBIN, B.SC. (Liverpool), DIP.ED.

C. M. R. PLATT, B.SC., M.SC. (Rhodes).

P. K. A. RAJA, B.SC. (Madras), M.SC. (Benares),
A.I.N.P. (Calcutta).

Senior Technical Staff

*Laboratory Super-
intendent*

Laboratory Technician

F. S. HICKSON, A.I.S.T.

MRS. J. LOUPEKINE, B.SC. (Bristol),
M.I.BIOL.

COURSES OF STUDY

At present the only course available is a full-time two-year course leading to the General Certificate of Education of the University of London in three subjects at Advanced Level. The examination is held annually at the Royal Technical College in June-July.

The subject combinations possible are as follows:—

Group A—Chemistry, Physics, Maths (P. & A.).

Group B—Biology, Chemistry, Physics.

Group C—Geology, Chemistry, Physics.

The selection of subjects must have the approval of the Head of Faculty at the time of application and no changes will be allowed once a student is admitted.

Faculty Entrance Requirements

In addition to the general College entry requirement (five credits including English Language), the following are the Faculty requirements for entry to each combination of subjects:—

Group A—Physics with Chemistry; under certain conditions General Science will be accepted.

Group B—Biology; Physics with Chemistry desirable.

Group C—Physics with Chemistry; under certain conditions General Science will be accepted.

Credits in practical examinations will be considered an advantage.

To satisfy certain University Entrance requirements candidates are advised to have a Pass in a Language other than English.

Further information on syllabuses may be obtained by reference to the regulations for the G.C.E. Examination of the University of London. Prospective students are strongly recommended to consult with their headmaster in their choice of career and subject combinations. Useful information on careers may be obtained from such publications as "Careers in Science" obtainable from Her Majesty's Stationery Office.

During selection preference will be given to those wishing to take up a career in either teaching or pure science.

The present intention of the Faculty is to prepare students for more advanced studies elsewhere in such fields as:—

Science
Agriculture
Veterinary Science
Medicine or
Dentistry

Emphasis is placed on practical and experimental training. In Biology and Geology, excursions are organised both during term time and long vacations at which attendance is obligatory.

Department of Mathematics

<i>Senior Lecturer</i>	To be appointed.
<i>Assistant Lecturer</i>	M. ALALA, M.A. (St. Andrews).
<i>Assistant Lecturer</i>	B. SOHI, B.SC. (Edinburgh).
<i>Assistant Lecturer</i>	A. D. WILLIAMS, B.SC. (London).

Functions of the Department

These are of a service nature to the Faculties of Engineering, Arts and Science and the Department of Surveying leading to the examinations of the Institutions of Civil, Mechanical and Electrical Engineers, Royal Institution of Chartered Surveyors and the General Certificate of Education (A Level) Examination of the University of London.

The College Library

Librarian D. A. R. KEMP, B.A., F.L.A.
Assistant Librarians MRS. M. KENYON, A.L.A.
C. SMITH, F.L.A.
M. C. WISE, F.L.A.

There are four junior assistants.

The College Library is in temporary accommodation on the second floor of the main tuition block. Hours of opening (from 8 a.m. until 7 or 9 p.m. during the terms) are posted in the library, and a pamphlet guide to the library and its services is issued to all newcomers or is available on request.

The library seeks to provide a balanced collection of books, periodicals and pamphlets to cover all College courses and to provide a background to studies. The lack of general library facilities in East Africa makes necessary coverage larger than would be necessary in a more highly developed area, and this need is only partially satisfied at present for students. Further development of this aspect of the library stock, as well as the provision of more material to aid staff research work, is largely controlled by the present lack of space. Further provision of a collection of books for lending is also limited by space difficulties but will be kept in the foreground of plans for library expansion.

Stock is nevertheless growing rapidly and now numbers 15,000 books, 2,000 pamphlets and some 20,000 periodical parts. There is also a collection of British Standards. Over 600 periodicals are received in the library, many of them the gifts of local or foreign organisations.

The College library is open to all College students and staff and to many others by arrangement. In particular it is used by the members of the organisations whose libraries are housed in the College, namely the East African Institute of Architects, the East African Association of Engineers, the Kenya branches of the Royal Institute of Chartered Surveyors, the Chartered Institute of Secretaries, and the Kenya History Society. A loan collection of books on Physical Culture is also held in the Library. These collections, some 2,500 volumes in all, are of great value to the College which gains also from contact with the professional members of the bodies concerned.

Reading places are at present somewhat crowded and not always suitable for the wide variety of demand that exists, but there is seating accommodation for 80. The library is open for 56 hours a week during term and for somewhat less during the vacations.

Nearly 2,500 readers use the Library each week of term, and from the small lending section (some 1,600 books) and the overnight loan of reference books 900 to 1,000 issues are made each week.

The collection of encyclopedias, dictionaries, yearbooks and similar books of reference is now over 500 and there are in addition 250 general and subject bibliographies, book lists and film lists. A file of information on local (and some wider) matters is being collected and the cuttings collection is to be developed further.

Stock is classified by the Universal Decimal Classification (which is used by the British Engineering Institutions, the R.I.B.A., the Royal Technical College in Glasgow and many other similar bodies) and the catalogue has author and classified sections. In due course the catalogue will be annotated and sectional subject catalogues will be issued. Lists are prepared and regularly circulated of the more important periodical articles, of book reviews of interest to College staff, of new books and pamphlets added to stock, and of articles on buildings. This last is the first of a series of bibliographies which is being prepared; it is kept up to date by regular supplements. A staff Library Bulletin is issued at intervals.

Students in their third and subsequent years are encouraged by additional privileges and by more extensive personal assistance to make the fullest use of the library, and these advanced students will have special provision made for them when full library facilities are available. At the same time the library staff of four Chartered Librarians assures that the student from his first day can obtain whatever help or guidance he needs in the use of the growing stock of books and other sources of information. There is a training scheme in operation for the junior staff and in conjunction with this some help is given to other student librarians in the area. Close liaison is maintained with special and general libraries in the Nairobi area and when occasion arises information is obtained by loan, letter or photographic copies of material from overseas libraries.

Advisory Panels

Advisory Panels have been formed in the Professional Departments with the co-operation of local experts to assist and advise the College on professional matters connected with their departments.

ADVISORY PANEL E.A. INSTITUTE OF ARCHITECTS

*Chairman, President E.A.I.A.
and representing Tanganyika
Chapter*

*Vice-President, E.A.I.A.
Representing Uganda Chapter
Representing Kenya Chapter
Head of Faculty of Architecture,
R.T.C.*

Of R.T.C.—Secretary

C. J. CROWE, T.D.
G. H. McCULLOUGH
G. B. E. NORBURN
G. S. MELLAND

T. P. le BRIERO
J. C. B. PRICE

ADVISORY PANEL ON COMMERCE

*Chairman, Head of Faculty of
Commerce, Royal Technical
College*

*Economic Secretary, East
African High Commission*

*Vice-President, Association of
Chambers of Commerce in
East Africa*

*Executive Officer, Federation of
Kenya Employers*

*Acting Principal, Royal Tech-
nical College*

*President, Kenya Association of
Chartered Secretaries*

Institute of Transport

*Association of Accountants in
Eastern Africa*

Industrial Development Board

Institute of Bankers

*Secretary, Senior Lecturer in
Accountancy, Royal Technical
College*

W. RODGERS

H. L. ADAMS

R. E. M. ANDERSON

I. C. DUTHIE

H. P. GALE

Col. S. GHERSIE

C. T. HUTSON

I. MACLENNAN

B. S. MOHINDRA

E. V. WHITCOMBE

R. E. ELLMER

ADVISORY PANEL THE FACULTY OF ENGINEERING

Chairman, Head of Faculty of Engineering	C. A. JUDSON
E.A. Association of Engineers	G. C. BLOFIELD
" " " "	A. O. COSGROVE
" " " "	C. T. HENFREY
" " " "	P. JANSZ
" " " "	C. C. W. JOHNN
" " " "	J. A. KIDD
" " " "	J. C. LITHGOW, C.B.E.
" " " "	M. W. MANSON
" " " "	M. H. L. STANDEN
" " " "	J. M. STOCK, O.B.E.
Department of Education, Tanganyika	A. EMMS
Department of Education, Uganda	J. W. GAILER
Department of Education, Kenya	J. M. MESSENGER
Lecturer, Engineering	P. G. BHAGWAT
Senior Lecturer, Workshop Technology	B. GRINDROD
Senior Lecturer, Mechanical Engineering	S. R. LAMOND
Senior Lecturer, Civil Engineering	C. P. VIVIAN
Secretary, Senior Lecturer, Electrical Engineering	R. K. SIMMONDS

ADVISORY PANEL SURVEY

Directors of Survey of the three East African Territories (*ex officio*)
Representatives of the East African branches of the R.I.C.S.

(i) Kenya Branch Chairman
Representative, Land, Building, Quantity and
Valuation Sections.

(ii) Uganda Branch Chairman

(iii) Tanganyika Branch Chairman

Representatives of the Royal Technical College

(i) Head of Department of Surveying.

Special Members appointed by the Principal.

The New American Wing

Plans to expand the facilities of the Faculty of Engineering through the generosity of the American Foreign Operations Administration (now known as the International Co-operation Administration of the United States of America) were first discussed in 1954. As a result of these discussions, the International Co-operation Administration provided funds amounting to £156,190 for the construction and equipping of a new building to be known as the American Wing, and of this sum, just over half has been spent on the building itself and the remainder on its equipment.

The new American Wing will be completed by October 1959, and in addition to the Drawing Offices, Lecture and Research rooms, will include laboratories for electrical engineering, metallurgy, metrology, theory of machines, non-destructive testing, computations, X-ray equipment, and surveying.

College Administration

<i>Registrar</i>	G. W. MANFIELD, B.sc. (London).
<i>Secretary</i>	Mrs. J. L. ROYSTON-SMITH.
<i>Bursar</i>	H. S. ADAMS, M.C.
<i>Secretary</i>	Miss C. FRANKS.
<i>Assistant Bursar</i>	D. G. OWENS.
<i>Secretary to the Principal</i>	Mrs. P. C. P. DEARDEN, B.A. (London).
<i>Admissions Secretary</i>	Mrs. K. PENNELL.
<i>Committee Clerk</i>	Mrs. W. U. THOMPSON.
<i>Cateress</i>	Mrs. A. LARSEN.
<i>Nursing Sister</i>	Miss M. MANSON-BAHR, S.R.N.

HALLS OF RESIDENCE

<i>Warden (Women's Hall)</i>	To be appointed.
<i>Warden (Men's Hall)</i>	To be appointed.
<i>Halls Manager</i>	R. W. COOPER.

The Halls of Residence

The College possesses five Halls of Residence, three of which are for men students and two for women students. The Men's Halls are situated on Hospital Hill and overlook the College Sports Grounds. The Women's Halls are in Protectorate Road. All are within easy walking distance of the College. Halls of Residence Committees are organised from both staff and students to discuss and take decisions on the organisation of the facilities of the Halls.

Every student is provided with a study bedroom which is furnished simply but adequately. Bedding is issued by the College and the cost debited to the students' account.

Students take their meals in the College Dining Halls. A formal High Table is held at least three times in each term and on these occasions guests are invited by the Masters of Halls to meet the students.

Common Rooms are provided in each Hall of Residence for the use of students and these are normally open from 7.30 a.m. to 10.30 p.m. daily.

Prizes

The following prizes are awarded annually through the generosity of outside benefactors :—

Gandhi Memorial Prizes

Prizes to the value of Shs. 2,000/- per annum in units of Shs. 100/-.

Maganlal M. Bhatt Prizes

Two prizes annually to the best students in the Faculties of Commerce and Science.

East African Tobacco Co. Prizes

Prizes to the value of Shs. 400/- for the most outstanding students in Architecture, Arts, Commerce, Engineering, Science, Survey, Domestic Science and Art.

Essay Prize to the value of Shs. 1,000/- presented by the Chairman of the Governing Council for the best essay on a given topic.

Shell Company Essay Prizes

Two prizes annually :
First Prize Shs. 150/-.
Second Prize Shs. 75/-.

E.S.A. Essay Prizes

Two prizes annually :
First Prize Shs. 200/-.
Second Prize Shs. 100/-.
in the Faculty of Arts.

Scholarships and Bursaries

Applications for Scholarships and Bursaries are also considered by :—

The Gandhi Smarak Nidhi Trust.
The Shell Company of East Africa.
Maniben and Mohanlal Rattansi Trust.

Full details and method of application will be posted on College Notice Boards.

Students' Union

The Students' Union, formerly known as The Students' Society, was introduced on the opening of the College to provide a regular method of consultation between the students of the College and the College authorities on matters of common interest and welfare, to assist in the development of a College corporate spirit, to foster students' societies and clubs, and to establish friendly relations with other bodies of higher education in East Africa and elsewhere, wherever appropriate.

Membership is of three kinds :—

- (a) Corporate Membership, which is open to students undertaking full-time or composite courses in the College;
- (b) Associate Membership, which is open to part-time students and students on short courses; and
- (c) Honorary Membership, which is open to ex-students and others on application to the Council and with its subsequent approval.

Membership lasts for one year in the case of Honorary Members and may be renewed on application.

The affairs of the Union are normally governed by a Representative Council of the Union which holds office for one year, and which consists, in addition to corporate and associate representatives, of three members of the College staff. The Council elects an Executive Committee to conduct the more routine functions of the Union between annual general meetings.

The formation of other Clubs within the College for special activities is subject to the general control of the Union and applications for affiliation of Clubs are considered for approval by the Council.

There is an annual subscription to the Union of Shs. 30/- for Corporate members, which is included in the deposit required from full-time students. Associate members pay their annual subscription of Shs. 20/- direct to the Honorary Treasurer of the Union. Subscriptions are due and payable on enrolment. Honorary members are exempt from subscriptions but may make donations to the Union.

Sports Activities

Sports play a most important part in College life and the following clubs are participating in Inter-Faculty Tournaments:

Badminton	<i>for the Judson Cup</i>
Cricket	<i>for the Gheewald Shield</i>
Football	<i>for the Madan Cup</i>
Hockey	<i>for the Willoughby Cup</i>
Tennis	<i>for the Clorinda Gale Cup (Doubles)</i> <i>Evangeline le Briero Cup (Singles)</i>
Table Tennis	<i>for the M. R. Shah Cup</i>

There is also The Mehta Cup for the Sportswoman of the year and The Cooper Cup for the Sportsman of the year. Other active Clubs are Volleyball, Boxing, Swimming and Athletics.

Sports Clubs are run by Students who elect their own Captains and Committees. Besides the normal Inter-Faculty Games outside fixtures are arranged for College representative sides.

Each year the College competes against Makerere College in Inter-Collegiate Games for which several trophies have been presented.

Women Students

Women Students are also active in the field of sport; at present they have a Netball side and participate in Badminton, Tennis and Hockey.

Sports Grounds

The College at present has one Football ground, one Hockey ground, an Athletic track, two Tennis Courts. Badminton is played in the Gloucester Hall. Plans have been agreed for the laying out of a Cricket Field and more Football, Hockey and Tennis areas.