

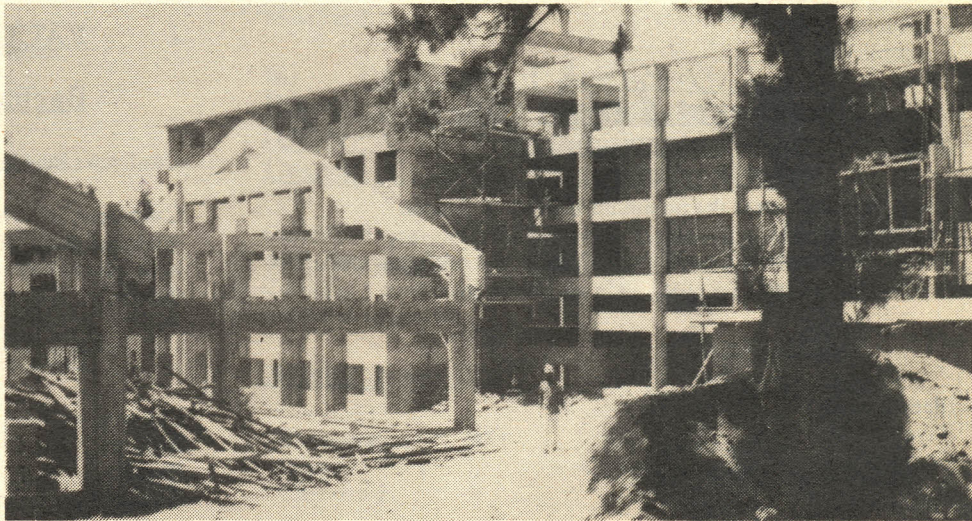
USAB READY FOR 1990 DOUBLE INTAKE - LUSWETI-

The 498 capacity twin hostels under construction on Mamlaka Road will be completed by the end of this year. University Student Accommodation Board (USAB) the General Manager Mr. G.A.N. Lusweti told Varsity Focus.

Mr. Lusweti said the twin hostels will be self contained, having a dinning hall and a kitchen.

He said the hostels are composed of double rooms more like those of Hall thirteen. "Though single rooms are the ideal, they are not practical at a time when the board and University are faced with acute shortage accommodation". he said.

He said the design of the KShs. 6 million complex is different from other halls. The designers have moved away from flat roofs to parched roofs.



One of the new hostels under construction along Mamlaka Road.

Parched roofs are easier to maintain and do not pose a great leakage problems like flat roofs. Consequently, "the new complex will have tiled roofs which will also enhance its beauty" he said.

The plan of the new complex was developed by members of staff of the faculty of Architecture, Design and Development(A.D.D). The faculty is also doing the architecture consultancy work through messers Pami Ravi and Mbaya.

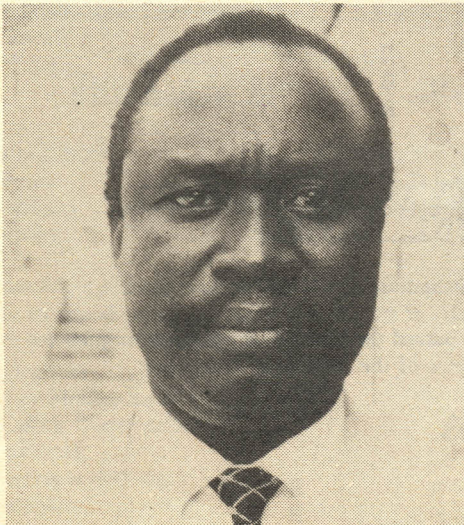
Asked about the fate of the ten prefabricated units after new complex is completed, Mr. Lusweti said they will remain. He said the demand for accommodation is high and thus all available shelter will be utilized. "Prefabricated units are in good shape and

U.S.A.B. definitely needs them" he said.

Asked about what other accommodation expansion programme the University has, Mr. Lusweti said that information will be contained ion the Vice-Chancellors development plan for the year 1990 and beyond.

However, hostel expansion programmes is a going on concern and the university will "continue to build more modern hostels to accommodate the increasing number of students" he said.

The University General Development plan for 1989/90 indicates major expansion on the new 40 acre site at Kikuyu and Lower Kabete, in addition to completion of the Mamlaka Road Hostel and some modest growth at chiromo Campus.



Lusweti: "we are ready"