

1974/c
slc

slc



HRDU LIBRARY COPY
DO NOT REMOVE

1974/11

UNIVERSITY OF NAIROBI
HOUSING RESEARCH AND DEVELOPMENT UNIT

P.O. BOX 30197 NAIROBI KENYA TELEPHONE 27441 EXT. 212 TELEGRAMS VARSITY

H.R.D.U.
U.D.C
711.3
C.1

PILOT RURAL HOUSING SCHEMES

Notes on visits to the Pilot Rural Housing Schemes
at Chuka, Migori and Kapsabet.

HRDU
U.D.C
711.3

Charles Hooper
January, 1974.

CONTENTS

Introduction

1. USER REACTIONS
 - 1.1 General Appearance
 - 1.2 House Plans
 - 1.3 Bedrooms
 - 1.4 Living Room
 - 1.5 Kitchen
 - 1.6 W.C. and Shower
 - 1.7 Water and Electricity
 - 1.8 Garden
 - 1.9 Construction Method
 - 1.10 Thermal Comfort

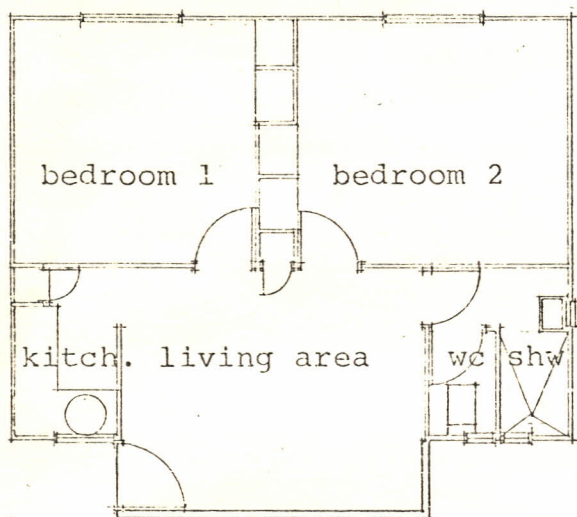
2. CONSTRUCTION
 - 2.1 Roof
 - 2.2 Wall
 - 2.3 Window Openings
 - 2.4 Termite Damage
 - 2.5 Timber Frame, Plaster Clad Houses

Introduction

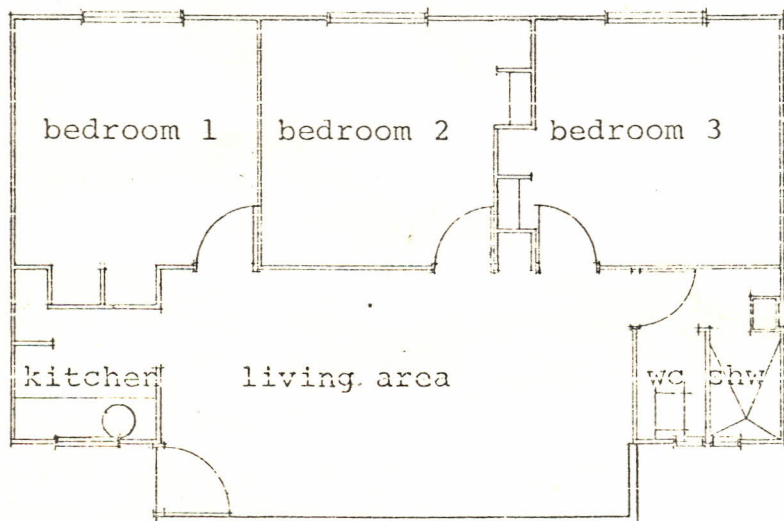
The Ministry of Housing at the end of 1972 requested the Housing Research and Development Unit to carry out User Reaction Studies of the Pilot Rural Housing Schemes at Migori, Wamanga, Chuka and Kapsabet. The former is built of concrete blocks while the other are of a timber frame construction with an external finish of plaster and internal finishes of plasterboard.

When Mr. Mulili of the HRDU visited Chuka on the 4th January he was only able to survey six houses as the scheme was only partly occupied. The User Reaction Studies of the four schemes were therefore postponed. Since then however the writer has visited, in passing, the schemes at Chuka (July 1st), Migori (July 9th) and Kapsabet (December 9th). The following notes are based on these visits together with the partial survey of user reactions at Chuka.

PLAN TYPES



TWO BEDROOM TIMBER HOUSE



THREE BEDROOM TIMBER HOUSE

metres 0 1 2 3 4

